

WGS84
±16ft

40.08751, -104.44843

ft
±11ft

4837

°T
±12

SE153



© 09-Feb-24 08:54:39 AM
ECMC Environmental Inspection Julian Pluss

WGS84
±16ft

40.08752, -104.44843

ft
±11ft

4837

°T
±12

S189



© 09-Feb-24 08:54:41 AM
ECMC Environmental Inspection Julian Pluss

WGS84
±16ft

40.08752, -104.44843

ft
±11ft

4837

°T
±12

SW223



© 09-Feb-24 08:54:43 AM
ECMC Environmental Inspection Julian Pluss

WGS84 40.08749, -104.44841

ft 4839

°T ±12

SW237



© 09-Feb-24 08:54:58 AM
ECMC Environmental Inspection Julian Pluss

WGS84
±40ft

40.08768, -104.44862

ft
±13ft

4836

°T
±12

NW315



© 09-Feb-24 09:02:00 AM
ECMC Environmental Inspection Julian Pluss

WGS84
±17ft

40.08760, -104.44858

ft
±10ft

4835

°T
±12

N346



© 09-Feb-24 09:02:02 AM
ECMC Environmental Inspection Julian Pluss

WGS84
±15ft

40.08753, -104.44870

ft
±12ft

4836

°T
±12

S181



PHADN ENERGY PARTNERS, LLC.
JULIAN PLUSS #1
NW/4W SEC. 4-T1S-R64W
WELD CO., COLORADO
1 MI. E. OF RD. 63 ON RD. 14
KPK
JULIAN A. PLUSS UNIT 1
CONDENSATE TANKS
AIRS ID 123-8474-001
PERMIT GP01



© 09-Feb-24 09:02:19 AM
ECMC Environmental Inspection Julian Pluss

WGS84
±15ft

40.08753, -104.44871

ft
±12ft

4837

°T
±12

SW208



© 09-Feb-24 09:02:21 AM
ECMC Environmental Inspection Julian Pluss

WGS84 $\pm 16\text{ft}$ 40.08750, -104.44877 \wedge^{ft} $\pm 11\text{ft}$ 4841 \triangleleft \circ, T ± 12 W276



© 09-Feb-24 09:02:38 AM
ECMC Environmental Inspection Julian Pluss

WGS84
±16ft

40.08750, -104.44886

ft
±11ft

4842

°T
±12

S187



© 09-Feb-24 09:02:52 AM
ECMC Environmental Inspection Julian Pluss

WGS84
±16ft

40.08749, -104.44893

ft
±11ft

4841

°T
±12

S169



© 09-Feb-24 09:03:08 AM
ECMC Environmental Inspection Julian Pluss

WGS84
±16ft

40.08749, -104.44892

ft
±11ft

4841

°T
±12

SW220



© 09-Feb-24 09:03:12 AM
ECMC Environmental Inspection Julian Pluss

WGS84
±16ft

40.08750, -104.44893

ft
±11ft

4839

°T
±12

W268



© 09-Feb-24 09:03:15 AM
ECMC Environmental Inspection Julian Pluss

WGS84
±16ft

40.08749, -104.44892

ft
±11ft

4840

°T
±12

NW320



© 09-Feb-24 09:03:18 AM
ECMC Environmental Inspection Julian Pluss

WGS84
±16ft

40.08751, -104.44893

ft
±11ft

4839

°T
±12

N345



© 09-Feb-24 09:03:20 AM
ECMC Environmental Inspection Julian Pluss

WGS84
±16ft

40.08745, -104.44892

ft
±11ft

4841

°T
±12

E99



© 09-Feb-24 09:03:36 AM
ECMC Environmental Inspection Julian Pluss



WGS84
±16ft

40.08744, -104.44894

ft
±11ft

4841

°T
±12

W283



© 09-Feb-24 09:03:42 AM
ECMC Environmental Inspection Julian Pluss

WGS84
±16ft

40.08745, -104.44911

ft
±11ft

4839

°T
±12

NE66



© 09-Feb-24 09:04:06 AM
ECMC Environmental Inspection Julian Pluss

WGS84
±16ft

40.08746, -104.44912

ft
±11ft

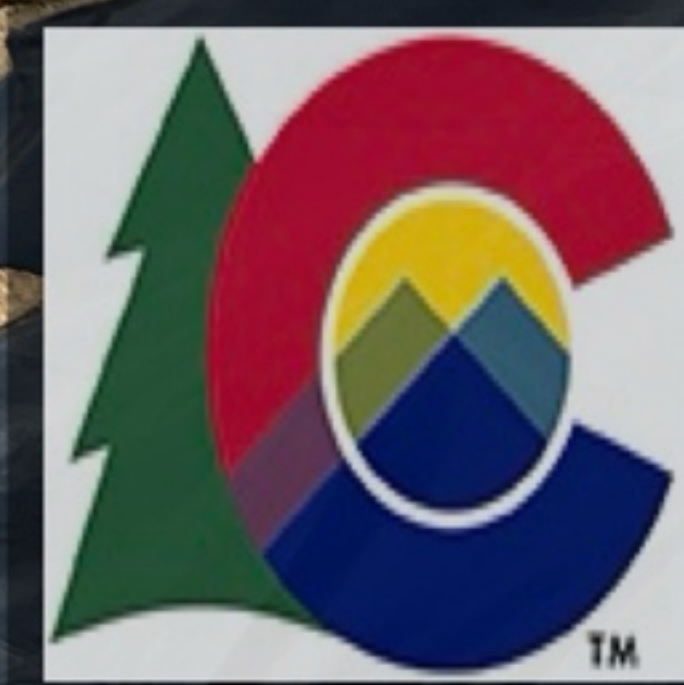
4839

°T
±12

NE16



© 09-Feb-24 09:04:09 AM
ECMC Environmental Inspection Julian Pluss



WGS84
±16ft

40.08758, -104.44911

ft
±11ft

4839

°T
±12

E101



© 09-Feb-24 09:04:32 AM
ECMC Environmental Inspection Julian Pluss



WGS84
±16ft

40.08758, -104.44910

ft ±11ft 4838

°T ±12 SE145

© 09-Feb-24 09:04:34 AM
ECMC Environmental Inspection Julian Pluss



WGS84
±16ft

40.08756, -104.44903

ft
±11ft

4833

°T
±12

E97



© 09 Feb 24 09:04:46 AM
ECMC Environmental Inspection Julian Pluss

WGS84
±16ft

40.08757, -104.44903

ft
±11ft

4838

°T
±12

E93



© 09-Feb-24 09:04:48 AM
ECMC Environmental Inspection Julian Pluss

WGS84 40.08748, -104.44844 Δ ft 4844 \pm 11 ft \pm 12 SE158



© 09-Feb-24 09:26:50 AM
ECMC Environmental Inspection Julian Pluss

WGS84 40.08749, -104.44844 M ft 4844 °, T SW203
±16ft ±1ft ±12



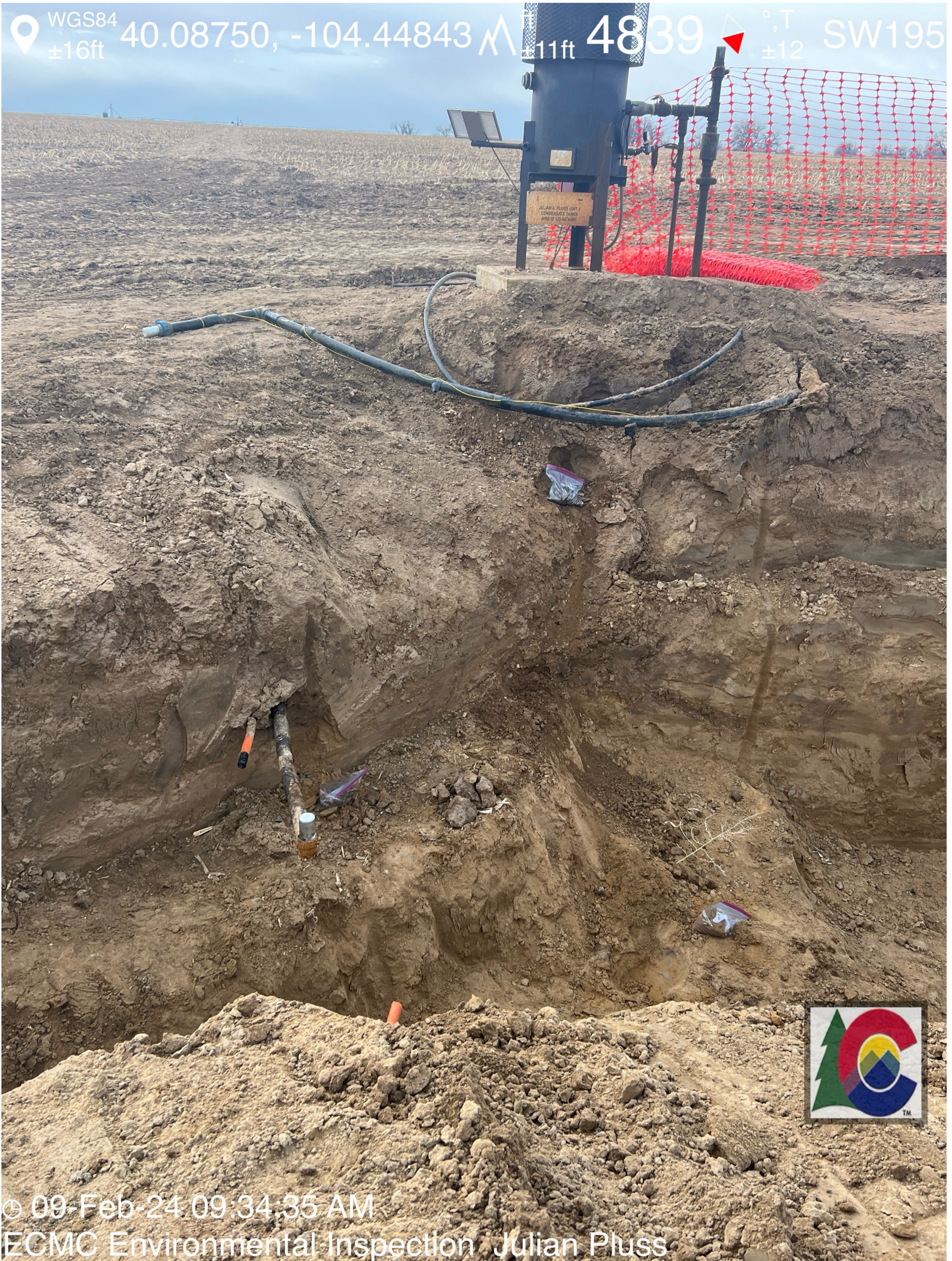
© 09-Feb-24 09:28:26 AM
ECMC Environmental Inspection Julian Pluss

WGS84 40.08749, -104.44844 Δ ± 16 ft \wedge ± 11 ft 4844 \triangle ± 12 °, T SW229



© 09-Feb-24 09:28:29 AM
ECMC Environmental Inspection Julian Pluss

WGS84 40.08750, -104.44843 Δ 11ft 4839 °T ±12 SW195
±16ft



© 09-Feb-24 09:34:35 AM
ECMC Environmental Inspection Julian Pluss

WGS84 40.08750, -104.44844 \wedge ^{ft} ±11ft 4839 [°],T ±12 SE157



© 09-Feb-24 09:34:37 AM
ECMC Environmental Inspection Julian Pluss

WGS84 $\pm 12\text{ft}$ 40.08750, -104.44846 \wedge $\pm 10\text{ft}$ 4834 \triangle ± 12 °, T SW216



© 09-Feb-24 09:34:54 AM
ECMC Environmental Inspection Julian Pluss