

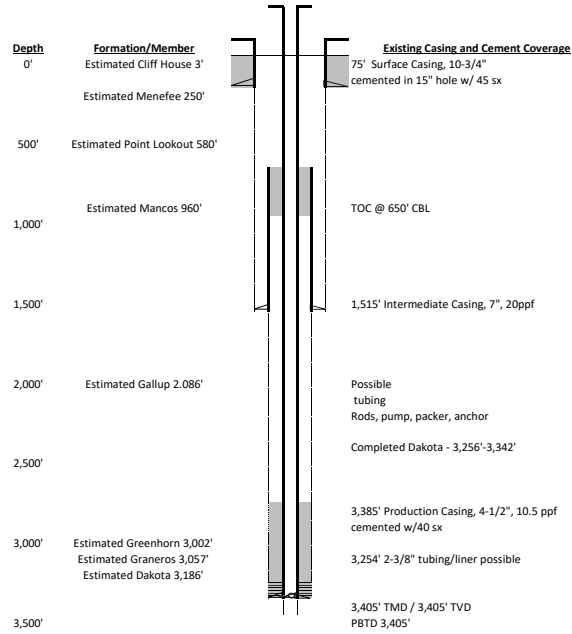
**Red Mesa Bond Claim: Task 2 - Plug and Abandon - 325520 067-06542  
Taylor No. 2 #32-1**

Prepared SRC 2/27/2024 Notes: Spud 06/10/1981

FIELD NAME Red Mesa  
FIELD NUMBER 72890

**LOCATION**

Basin San Juan Mineral Owner: Fee  
Location-Townships 33N Surface Owner: Fee  
Location-Ranges 12W  
Elevation 6,407'



Space	Hole/Csg	Csg	cf/f	bbls/ft
Annulus above shoe	7	4.5	0.1169	0.0208
Casing		7	0.2673	0.0476
Casing		4.5	0.0896	0.0159

Plug #	sx	bbls
1	25	5.0
2	55	11.0
3	95	19.0
4	62	12.4
5	20	4.0
6	95	19.0
<b>Total</b>	<b>352</b>	<b>70</b>

Units			
	ft	ft <sup>3</sup> /ft	ft <sup>3</sup> /sack
<b>Sacks Cement</b>	<b>Length of Plug</b>	<b>Capacity</b>	<b>Yield</b>
124.17	600	0.2380	1.15

Units			
	ft	ft <sup>3</sup> /ft	ft <sup>3</sup> /sack
<b>Sacks Cement</b>	<b>Length of Plug</b>	<b>Capacity</b>	<b>Yield</b>
35.00	150.58	0.2673	1.15

\*BOP or other mechanical method should be used for well control

