

Inspection Photos

Location Name: TEP ROCKY MOUNTAIN LLC GYPSUM RANCH B Pad

Location ID: 336037



Photo # 9010 From entrance to location



Photo # 9011 Location

Inspection Photos

Location Name: TEP ROCKY MOUNTAIN LLC GYPSUM RANCH B Pad

Location ID: 336037



Photo # 9012 Location



Photo # 9013 Location

Inspection Photos

Location Name: TEP ROCKY MOUNTAIN LLC GYPSUM RANCH B Pad

Location ID: 336037



Photo # 9014 Location



Photo # 9015 Open ended load line

Inspection Photos

Location Name: TEP ROCKY MOUNTAIN LLC GYPSUM RANCH B Pad

Location ID: 336037



Photo # 9016 Open ended load line



Photo # 9017 Open ended load line

Inspection Photos

Location Name: TEP ROCKY MOUNTAIN LLC GYPSUM RANCH B Pad

Location ID: 336037

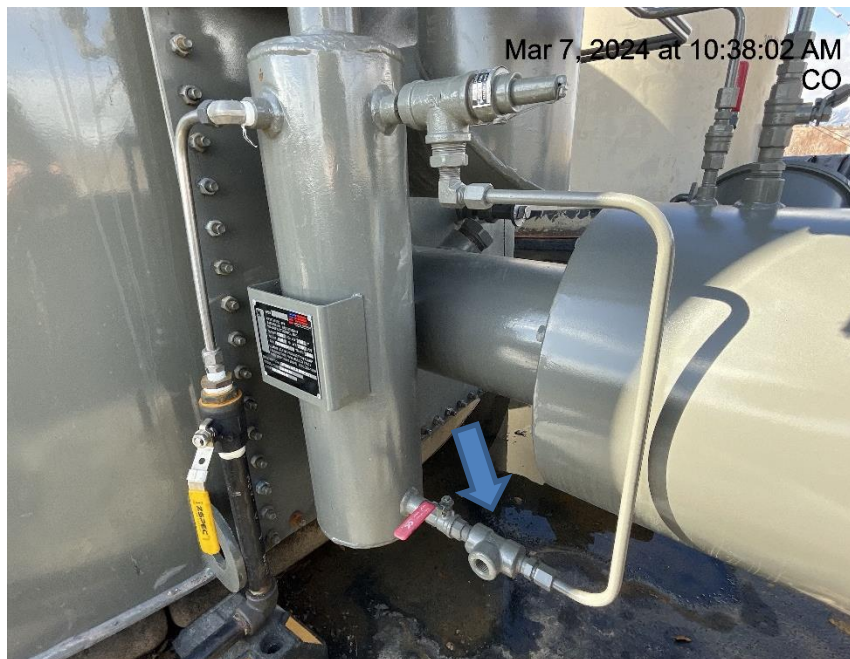


Photo # 9018 PRV vent line does not comply with CECMC pressure safety device rules & also terminates in an unsafe manner



Photo # 9019 PRV vent line does not comply with CECMC pressure safety device rules & also terminates in an unsafe manner

Inspection Photos

Location Name: TEP ROCKY MOUNTAIN LLC GYPSUM RANCH B Pad

Location ID: 336037



Photo # 9020 Open ended pipe/wildlife hazard



Photo # 9021 Tank lacks required labeling



COLORADO
Energy & Carbon Management
Commission
Department of Natural Resources

Inspection Photos

Location Name: TEP ROCKY MOUNTAIN LLC GYPSUM RANCH B Pad

Location ID: 336037



Photo # 9022 Tank lacks required labeling



Photo # 9023 Tank lacks required labeling

Inspection Photos

Location Name: TEP ROCKY MOUNTAIN LLC GYPSUM RANCH B Pad

Location ID: 336037



Photo # 9024 Tank lacks required labeling



Photo # 9025 Debris

Inspection Photos

Location Name: TEP ROCKY MOUNTAIN LLC GYPSUM RANCH B Pad

Location ID: 336037



Photo # 9026 Debris



Photo # 9027 Debris