

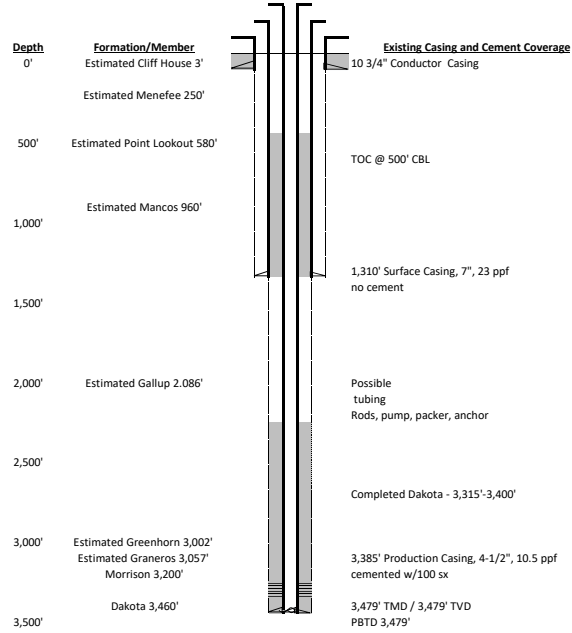
**Red Mesa Bond Claim: Task 2 - Plug and Abandon - 325573 067-06632
Herrera #4**

Prepared SRC 2/22/2024 **Notes:**
Spud 07/02/1984

FIELD NAME Red Mesa
FIELD NUMBER 72890

LOCATION

Basin San Juan Mineral Owner: Fee
Location-Townships 33N Surface Owner: Fee
Location-Ranges 12W
Elevation 6,471'



	Space	Hole/Csg	Csg	cf/f	bbls/ft
Annulus above shoe		7	4.5	0.1169	0.0208
Casing			7	0.2673	0.0476
Casing			4.5	0.0896	0.0159
Plug #	sx	bbls			
1		55	11.0		
2		45	9.0		
3		95	19.0		
4		10	2.0		
5		210	42.0		
Total		415	83		

Units			
	ft	ft ³ /ft	ft ³ /sack
Sacks Cement	Length of Plug	Capacity	Yield
30.50	300	0.1169	1.15

Units			
	ft	ft ³ /ft	ft ³ /sack
Sacks Cement	Length of Plug	Capacity	Yield
100.00	983.75	0.1169	1.15

*BOP or other mechanical method should be used for well control

