



February 29, 2024

Mr. Austin Lee
HSE Advisor
Occidental Petroleum Corporation
501 N Division Blvd
Platteville, Colorado 80651

Subject: **Form 4 Sundry Notice – Final Reclamation
Kerr-McGee Oil & Gas Onshore LP (Operator: 47120)
TALBOT 7-25, Location ID: 306248
SWNE S25-T1N-R68W
Weld County, Colorado**

Dear Mr. Lee:

Ensolum, LLC (Ensolum) is contracted by Kerr McGee Oil & Gas Onshore LP (Kerr-McGee) to complete final reclamation services at plugged and abandoned (P&A) well sites located in Weld County, Colorado. The reclamation inspections were conducted in accordance with Colorado Energy and Carbon Management Commission (ECMC) Rule 1004.

FINAL RECLAMATION ASSESMENT FINDINGS

The former Talbot 7-25 well (API: 05-123-24297) was P&A'd on November 9, 2023, as identified in Form 6, Document Number 403615523. On February 16, 2024, Ensolum conducted a final reclamation inspection for the former Talbot 7-25 well pad (Location ID: 306248) and it was determined that the site is compliant with final reclamation requirements per ECMC Rule 1004.

During the inspection it was observed that the former Talbot 7-25 well is located within an asphalt plant owned and operated by Asphalt Specialties Co. The associated tank battery was located 0.19-miles northeast of the P&A'd well site, has since been reclaimed and is also located within the asphalt plant undergoing active construction. All associated road base and equipment related to oil and gas activities have been removed from the well location. Ensolum personnel located the P&A wellhead location using a handheld Trimble DA2 Global Positioning System (GPS) unit and latitude and longitude coordinates obtained from the ECMC online database. A general site location map is included as Figure 1; and the Site Map displaying the location of the reclaimed site on aerial imagery is included as Figure 2. Photographs of the P&A location were taken facing each cardinal direction from the P&A wellhead location. The photographic log is included as Attachment 1.

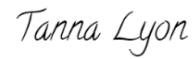
The previous land use for the former Talbot 7-25 well is defined as agricultural per ECMC Document Number 1806810. The land use has changed and is now an asphalt plant owned and operated Asphalt Specialties Co. Based on rule 1004.d, a Form 4 Sundry Notice requesting final reclamation status has been prepared for the submittal to the ECMC. This letter will be included as an attachment to the electronic Form 4 submittal. If you have any questions or need additional information, please do not hesitate to contact us.

Sincerely,

Ensolum, LLC



Trevor Hartwig
Project Biologist
303-817-2989
thartwig@ensolum.com



Tanna Lyon
Senior Scientist/Biologist
970-509-0947
tlyon@ensolum.com

Attachments:

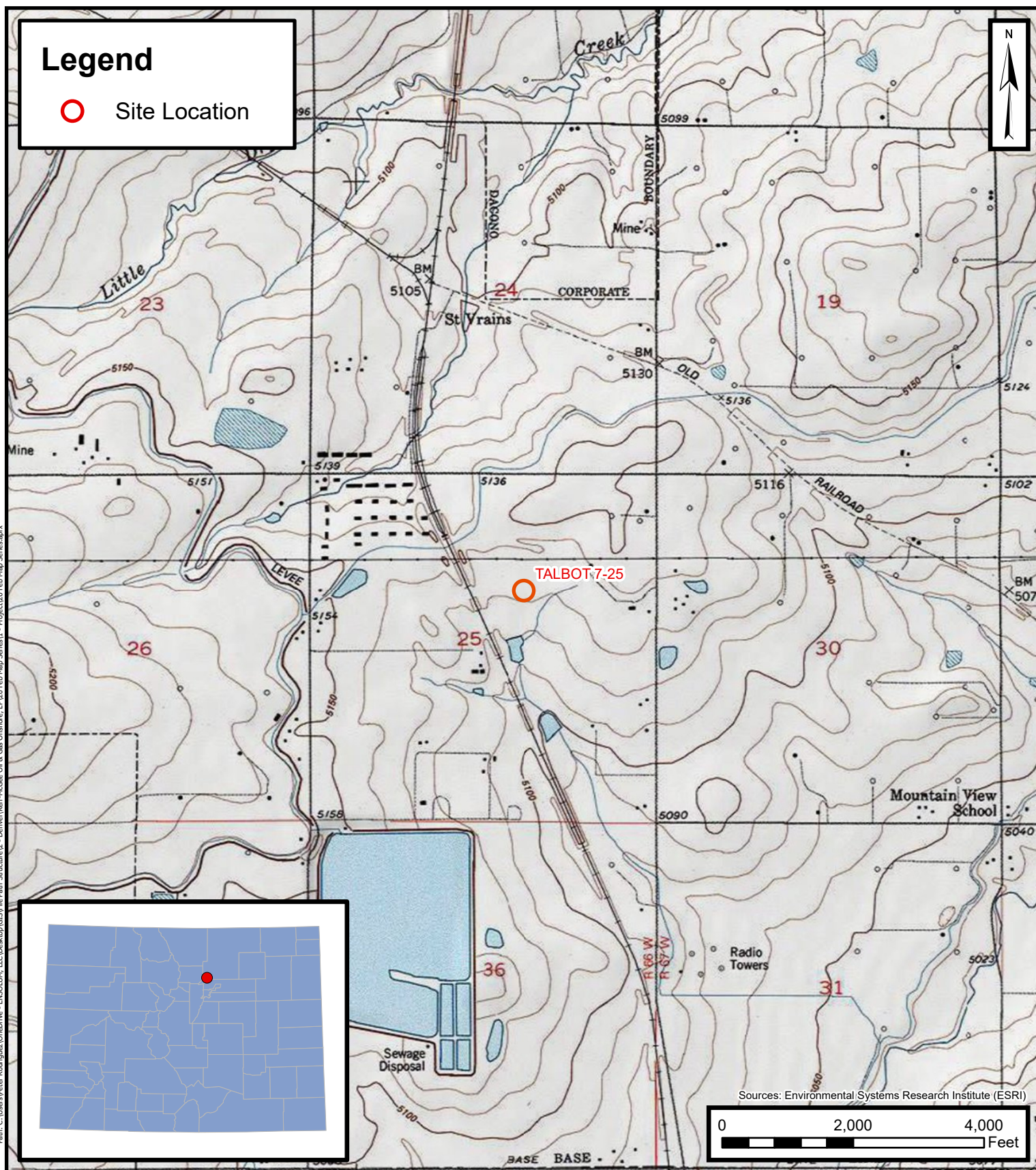
Figure 1 - Site Location Map

Figure 2 - Site Map

Attachment 1 – Photographic Log

Figure1 – Site Location Map

Path: C:\Users\peter.Rodriguez\OneDrive - ENSOLUM, LLC\Desktop\GIS\File Path Structure\2 - Denver\Kerr-McGee Oil & Gas Onshore, LP\25 Feb Map Series\1 - Project\25 Feb Map Series.aprx



Site Location Map

TALBOT 7-25
Kerr-McGee Oil & Gas Onshore LP
SWNE-S25-T1N-R68W
Weld County, Colorado

Project Number: 09A1417709

FIGURE

1

Figure 2 – Site Map

Legend

- Plugged & Abandoned Wellhead



TALBOT 7-25
API: 05-123-24297

0 100 200
Feet

Sources: Environmental Systems Research Institute (ESRI)



Site Map

TALBOT 7-25
Kerr-McGee Oil & Gas Onshore LP
SWNE-S25-T1N-R68W
Weld County, Colorado

Project Number: 09A1417709

FIGURE

2

ATTACHMENT 1

Photographic Log

RECLAMATION PHOTOGRAPHIC LOG

Kerr McGee Oil & Gas
Onshore LP - 47120

Talbot 7-25
Weld County, Colorado

Location ID: 306248
API: 05-123-24297

Date: February 16, 2024

Photo No. 1 - North

P&A Well Stake Lat/Long:
40.024436, -104.949649



View facing north as required in the Colorado Energy & Carbon Management Commission (ECMC) Rule 1004.

RECLAMATION PHOTOGRAPHIC LOG

Kerr McGee Oil & Gas
Onshore LP - 47120

Talbot 7-25
Weld County, Colorado

Location ID: 306248
API: 05-123-24297

Date: February 16, 2024

Photo No. 2 - South

P&A Well Stake Lat/Long:
40.024436, -104.949649



View facing south as required in the Colorado Energy & Carbon Management Commission (ECMC) Rule 1004.

RECLAMATION PHOTOGRAPHIC LOG

Kerr McGee Oil & Gas
Onshore LP - 47120

Talbot 7-25
Weld County, Colorado

Location ID: 306248
API: 05-123-24297

Date: February 16, 2024

Photo No. 3 - East

P&A Well Stake Lat/Long:
40.024436, -104.949649



View facing east as required in the Colorado Energy & Carbon Management Commission (ECMC) Rule 1004.

RECLAMATION PHOTOGRAPHIC LOG

Kerr McGee Oil & Gas
Onshore LP - 47120

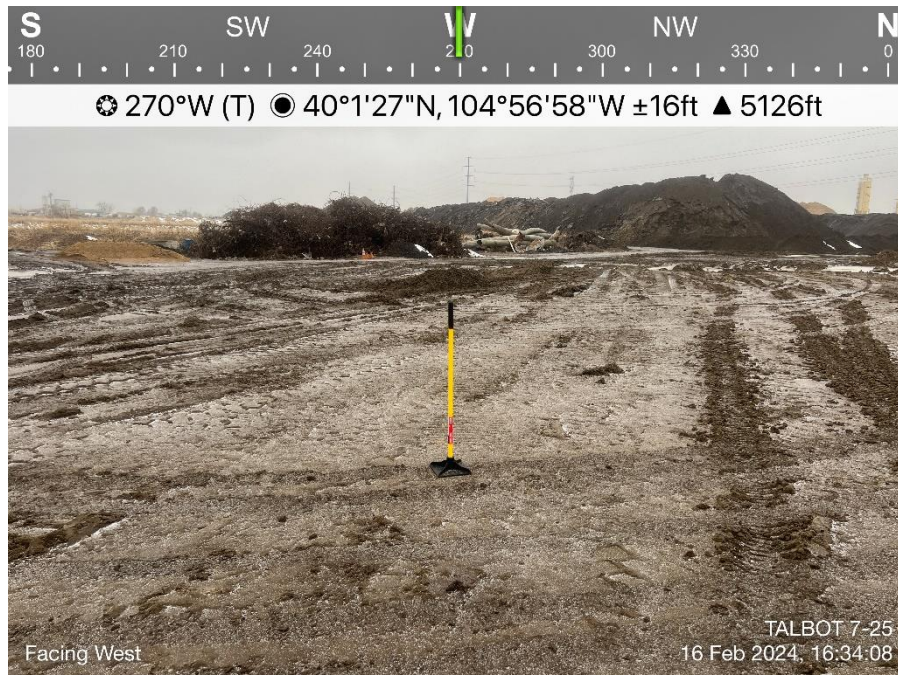
Talbot 7-25
Weld County, Colorado

Location ID: 306248
API: 05-123-24297

Date: February 16, 2024

Photo No. 4 - West

P&A Well Stake Lat/Long:
40.024436, -104.949649



View facing west as required in the Colorado Energy & Carbon Management Commission (ECMC) Rule 1004.

RECLAMATION PHOTOGRAPHIC LOG

Kerr McGee Oil & Gas
Onshore LP - 47120

Talbot 7-25
Weld County, Colorado

Location ID: 306248
API: 05-123-24297

Date: February 16, 2024

Photo No. 5 – Overall Site

P&A Well Stake Lat/Long:
40.024436, -104.949649



Overall site view as required in the Colorado Energy & Carbon Management Commission (ECMC) Rule 1004.

RECLAMATION PHOTOGRAPHIC LOG

Kerr McGee Oil & Gas
Onshore LP - 47120

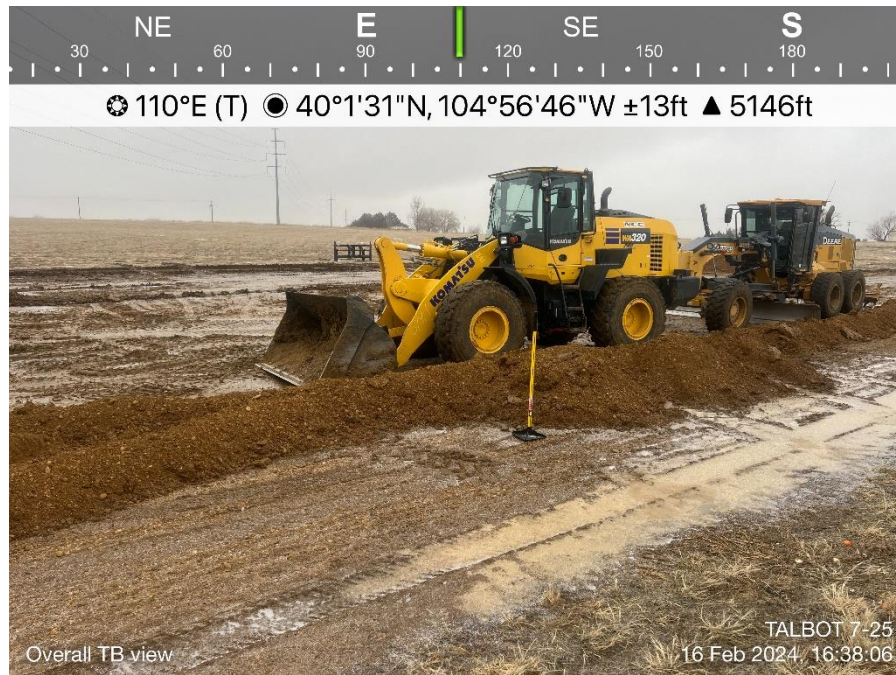
Talbot 7-25
Weld County, Colorado

Location ID: 306248
API: 05-123-24297

Date: February 16, 2024

**Photo No. 6 –
Overall Reclaimed Tank Battery**

P&A Well Stake Lat/Long:
40.024436, -104.949649



Overall reclaimed tank battery view as required in the Colorado Energy & Carbon Management Commission (ECMC) Rule 1004.