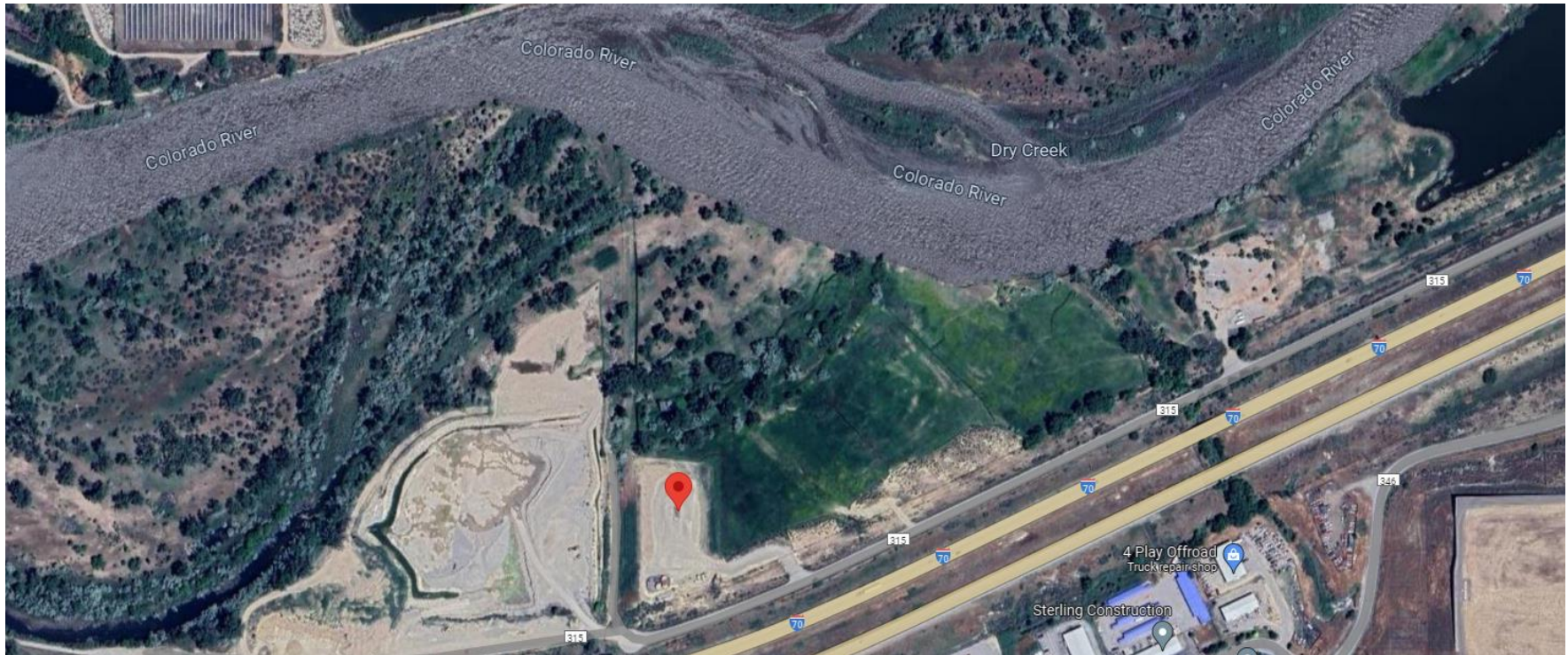


Storm Water Management and Erosion control
Location Name: TEP ROCKY MOUNTAIN LLC GYPSUM RANCH A Pad
Location ID: 335556



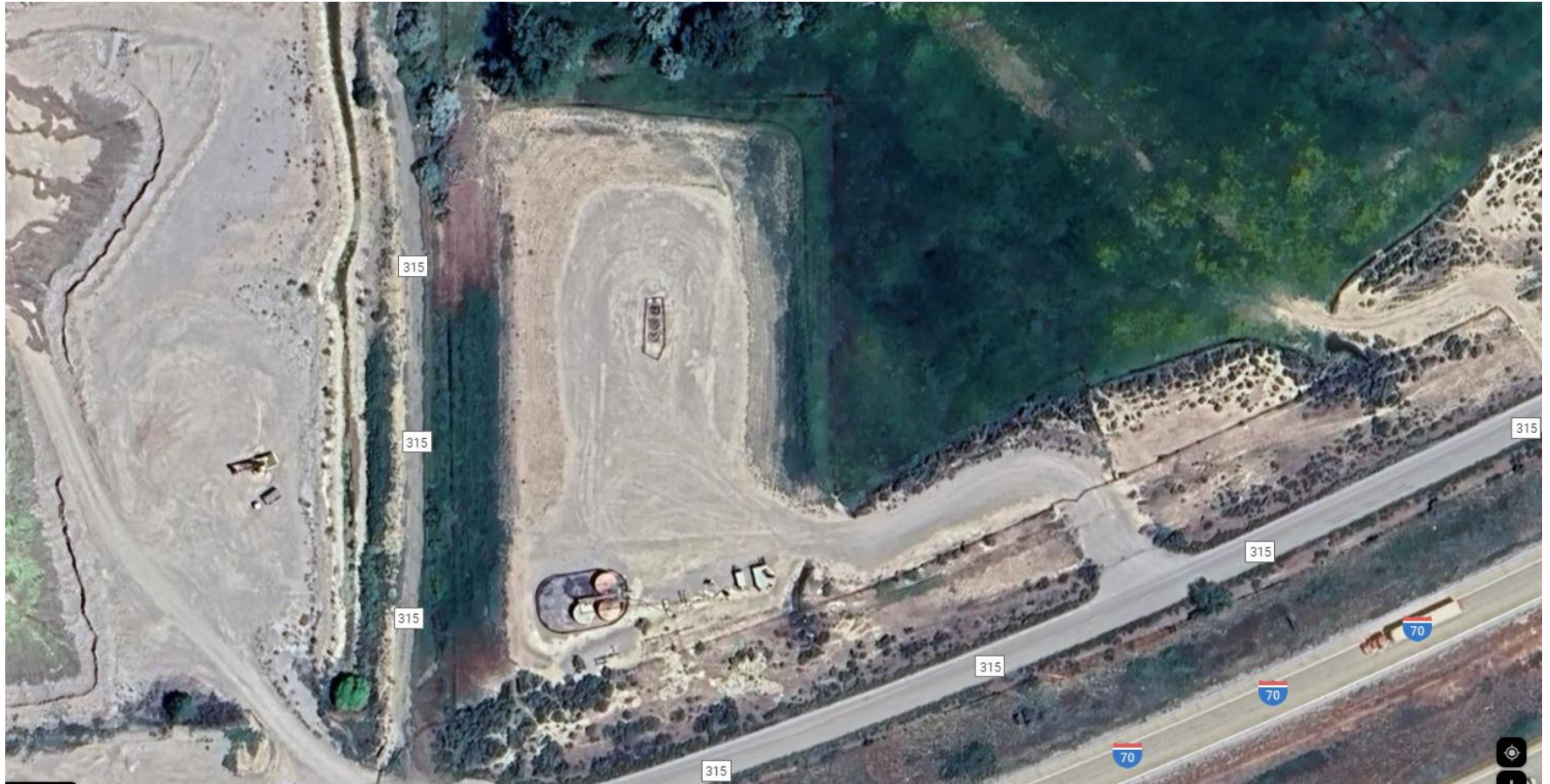
Location Overview: Location is within High Priority/Density/Black Bear Habitat areas/Bald Eagle Nest & Roost Sites & in close proximity to NSO Habitat area. Location is within Rule 411a Surface Water Intermediate Buffer. Location is approximately 239 yards from the Colorado River. Location is within close proximity to Freshwater Emergent & Riverine National Wetlands Inventory areas.

Section/Township/Range: 14 6S93W



COLORADO
Energy & Carbon Management
Commission
Department of Natural Resources

Storm Water Management and Erosion control
Location Name: TEP ROCKY MOUNTAIN LLC GYPSUM RANCH A Pad
Location ID: 335556



Location Overview:



Storm water Management and Erosion control
Location Name: TEP ROCKY MOUNTAIN LLC GYPSUM RANCH A Pad
Location ID: 335556



North West corner of location.



North East corner of location.



South West corner of location.



South East corner of location.

Storm water Management and Erosion control
Location Name: TEP ROCKY MOUNTAIN LLC GYPSUM RANCH A Pad
Location ID: 335556



Photo # 9060 Failure to minimize erosion & transport of sediment onto location/insufficient BMP's



Photo # 9061 Failure to minimize erosion & transport of sediment onto location/insufficient BMP's

Storm water Management and Erosion control
Location Name: TEP ROCKY MOUNTAIN LLC GYPSUM RANCH A Pad
Location ID: 335556



Photo # 9062 Failure to minimize erosion & transport of sediment onto location/insufficient BMP's



Photo # 9063 Failure to minimize erosion & transport of sediment onto location/insufficient BMP's

Storm water Management and Erosion control
Location Name: TEP ROCKY MOUNTAIN LLC GYPSUM RANCH A Pad
Location ID: 335556



Photo # 9064 Failure to minimize erosion & transport of sediment onto location/insufficient BMP's