



CDH Consulting, LLC
Thornton, Colorado
720.431.7468
www.CDHConsult.com

LINER INTEGRITY INSPECTION

Markham Pad Release

Facility ID #446104

Spill/Release Point ID # 483674

Weld County, Colorado

NWSE, Section 32, Township 4 North, Range 68 West

GPS Coordinates: 40.268963, -105.023771

Prepared For

1876 Resources, LLC

1290 Broadway, Suite 1650

Denver, Colorado 80203

Prepared By

CDH Consulting, LLC

Thornton, Colorado

1876 Resources

3-7-24 35

Markham Pad

40.268963, -105.023771

0945 RJ onsite to conduct liner inspection

- conduct walkthrough of release location inspecting liner to contain release that occurred 12/29/2022
- NO cracks, tears, perforations observed during walk through.
- Liner in good condition
- took photos of release area w/ liner condition

1030 RJ offsite

[Signature]

3-7-24

Liner Integrity Inspection
1876 Resources
Markham Pad
40.268963, -105.023771
Weld County, Colorado

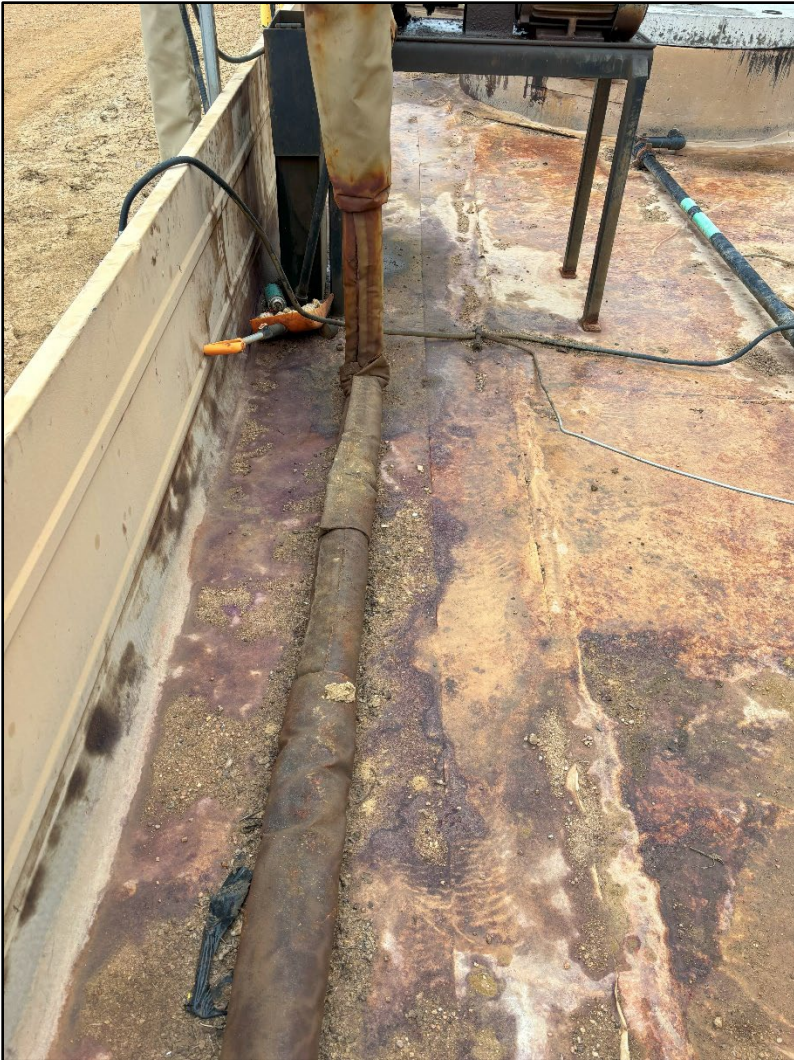


Photo 1: View south of liner, sump, and recirculating pump (release point)



Photo 2: View south of liner, sump, AST, and recirculating pump

Liner Integrity Inspection
1876 Resources
Markham Pad
40.268963, -105.023771
Weld County, Colorado



Photo 3: View west of liner and AST



Photo 4: View of sump located in southeast corner containment

Liner Integrity Inspection
1876 Resources
Markham Pad
40.268963, -105.023771
Weld County, Colorado



Photo 5: View west of liner containing precipitation south of sump



Photo 6: View south of liner containing precipitation around sump

Liner Integrity Inspection
1876 Resources
Markham Pad
40.268963, -105.023771
Weld County, Colorado



Photo 7: View west of liner, process equipment, and southwestern AST

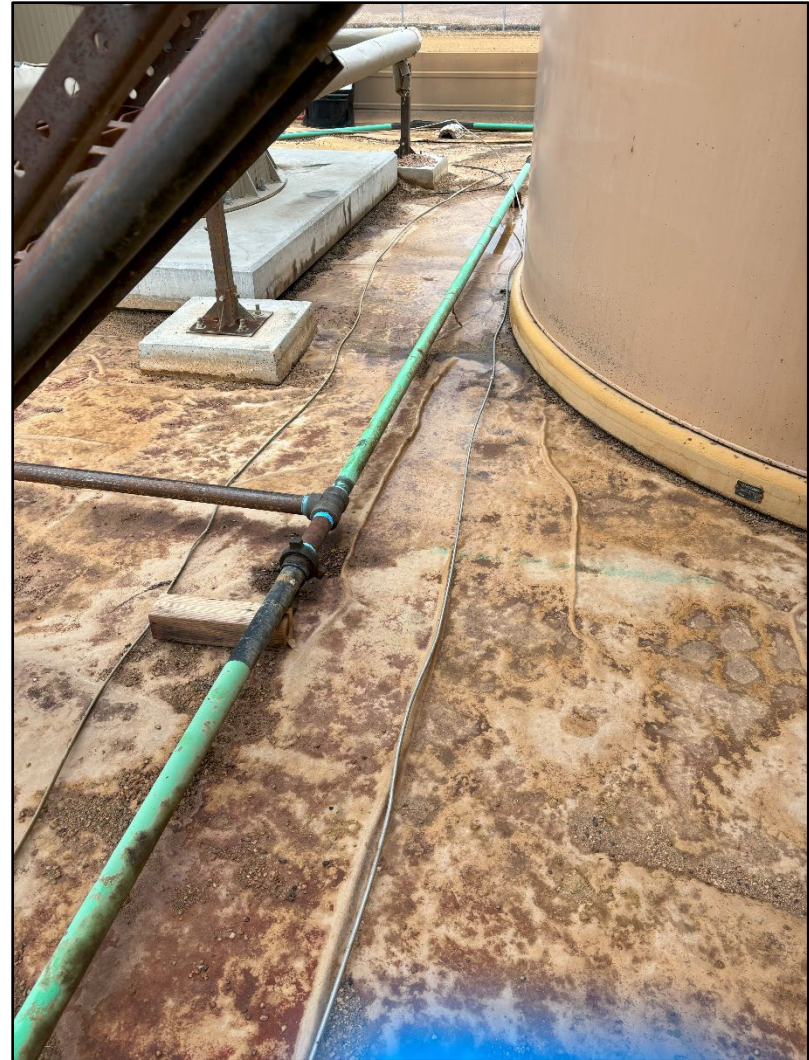


Photo 8: View west of liner, process equipment, and southwestern AST

Liner Integrity Inspection
1876 Resources
Markham Pad
40.268963, -105.023771
Weld County, Colorado



Photo 9: View between ASTs looking north

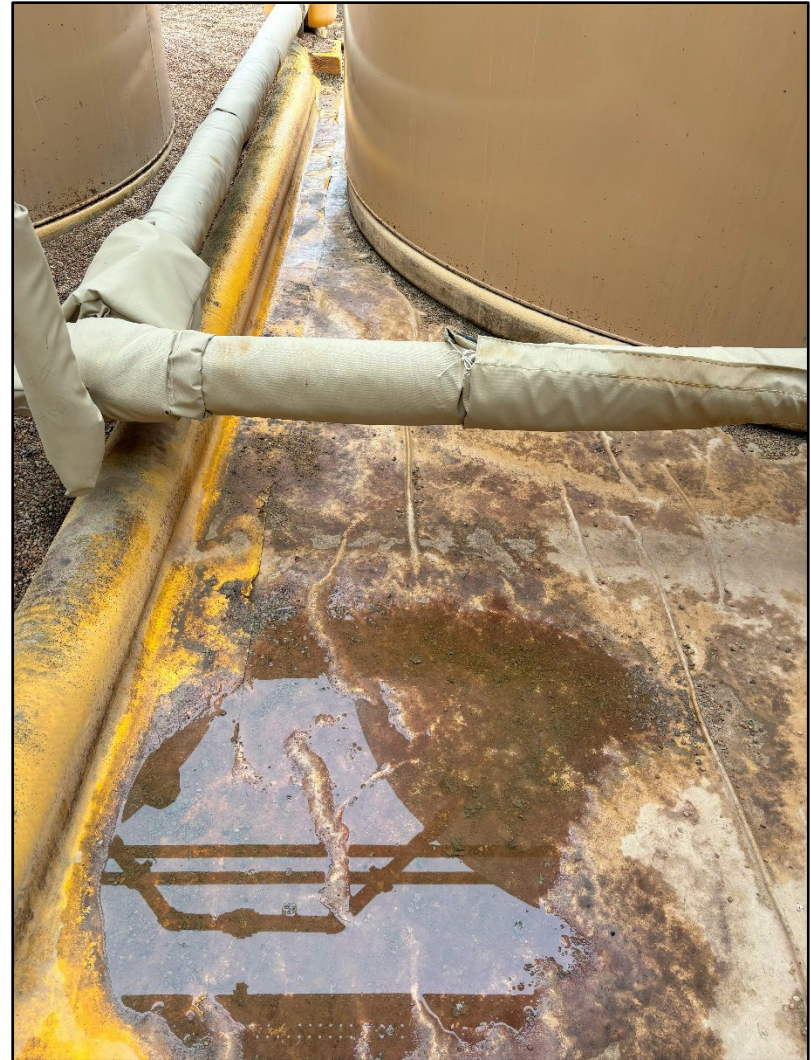


Photo 10: View west, liner containing precipitation between southern ASTs

Liner Integrity Inspection
1876 Resources
Markham Pad
40.268963, -105.023771
Weld County, Colorado

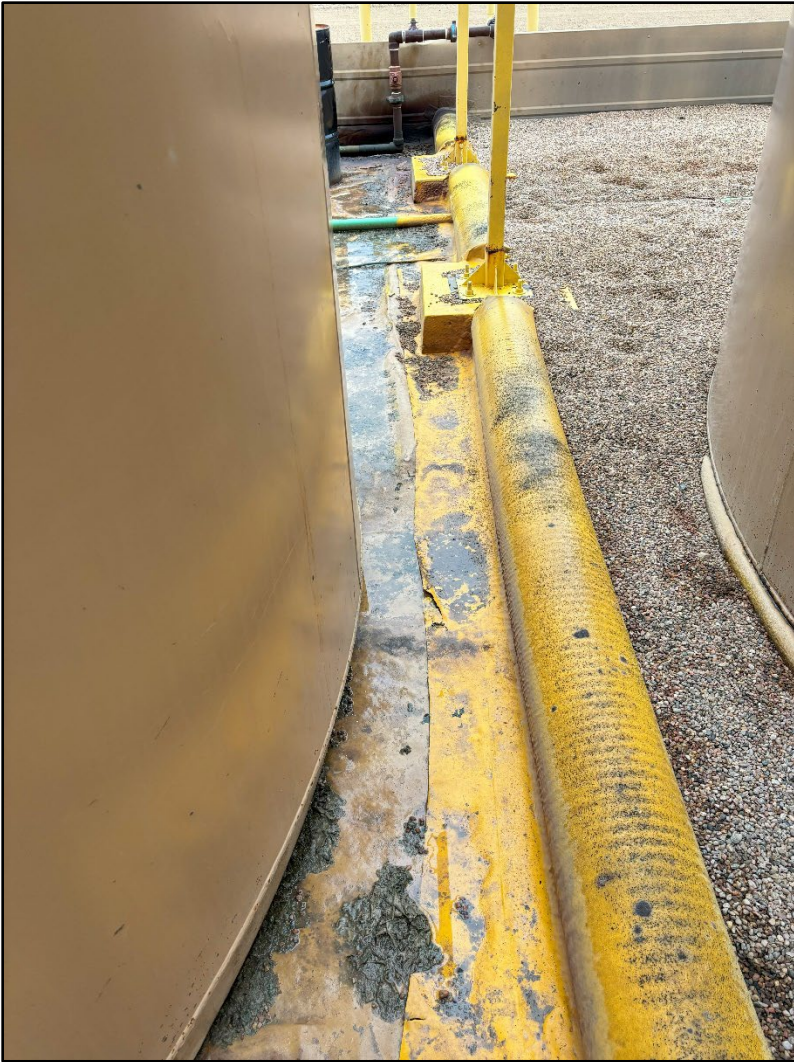


Photo 11: View west of liner north of southwestern AST



Photo 12: View south of liner west of southwestern AST

Liner Integrity Inspection
1876 Resources
Markham Pad
40.268963, -105.023771
Weld County, Colorado

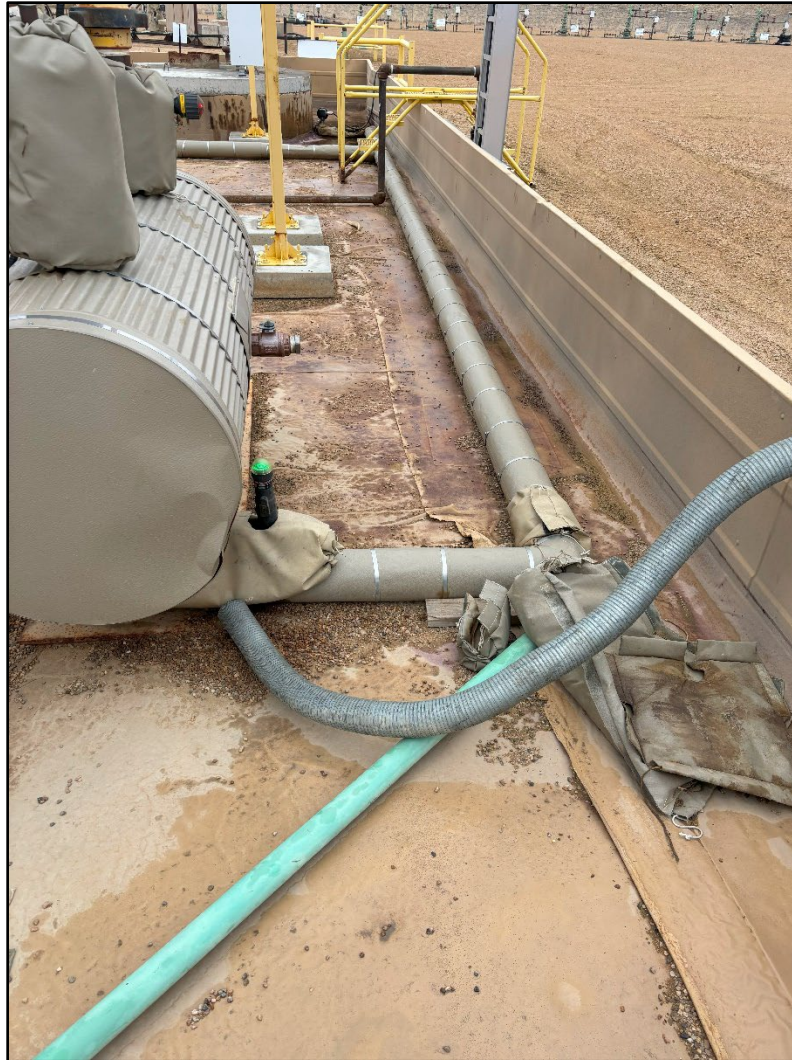


Photo 13: View east of liner along the southern wall of containment