



RADIAL BOND LOG
GAMMA RAY
CCL / VDL / MAP

Company CHEVRON
 Well FIVE RIVERS K 08-17D
 Field WATTENBERG - 90750
 County WELD
 State COLORADO
 Country U.S.A.

Company CHEVRON
 Well FIVE RIVERS K 08-17D
 Field WATTENBERG - 90750
 County WELD
 State COLORADO
 Country U.S.A.

Location: API #: 05-123-32583
 Otr. Qtr. SENE
 Permanent Datum SEC 8 TWP 4N RGE 66W
 Log Measured From G.L. Elevation 4698'
 Drilling Measured From K.B. Elevation 4711'
 K.B. 4710'
 G.L. 4698'

Date	NOVEMBER 10th, 2023
Run Number	1
Depth Driller	7527'
Depth Logger	4117'
Bottom Logged Interval	4108'
Top Log Interval	SURFACE
Open Hole Size	7-7/8"
Type Fluid	WATER
Density / Viscosity	8.3#
Max. Recorded Temp.	N/A
Estimated Cement Top	N/A
Time Well Ready	N/A
Time Logger on Bottom	N/A
Equipment Number	DSSHSR20-002
Location	MILLIKEN, CO
Recorded By	J. MICHAEL
Witnessed By	MR. CRAIG EAST

Borehole Record		Tubing Record					
Run Number	Bit	From	To	Size	Weight	From	To


Casing Record		Top		Bottom	
Size	Wgt/Ft	Top	Bottom	Top	Bottom
8-5/8"	24#	SURFACE	570'	SURFACE	570'
4-1/2"	11.6#	SURFACE	7519'	SURFACE	7519'

<<< Fold Here >>>

All interpretations are opinions based on inferences from electrical or other measurements and we cannot and do not guarantee the accuracy or correctness of any interpretation, and we shall not, except in the case of gross or willful negligence on our part, be liable or responsible for any loss, costs, damages, or expenses incurred or sustained by anyone resulting from any interpretation made by any of our officers, agents or employees. These interpretations are also subject to our general terms and conditions set out in our current Price Schedule.

Comments

NO CORRELATION LOG AVAILABLE

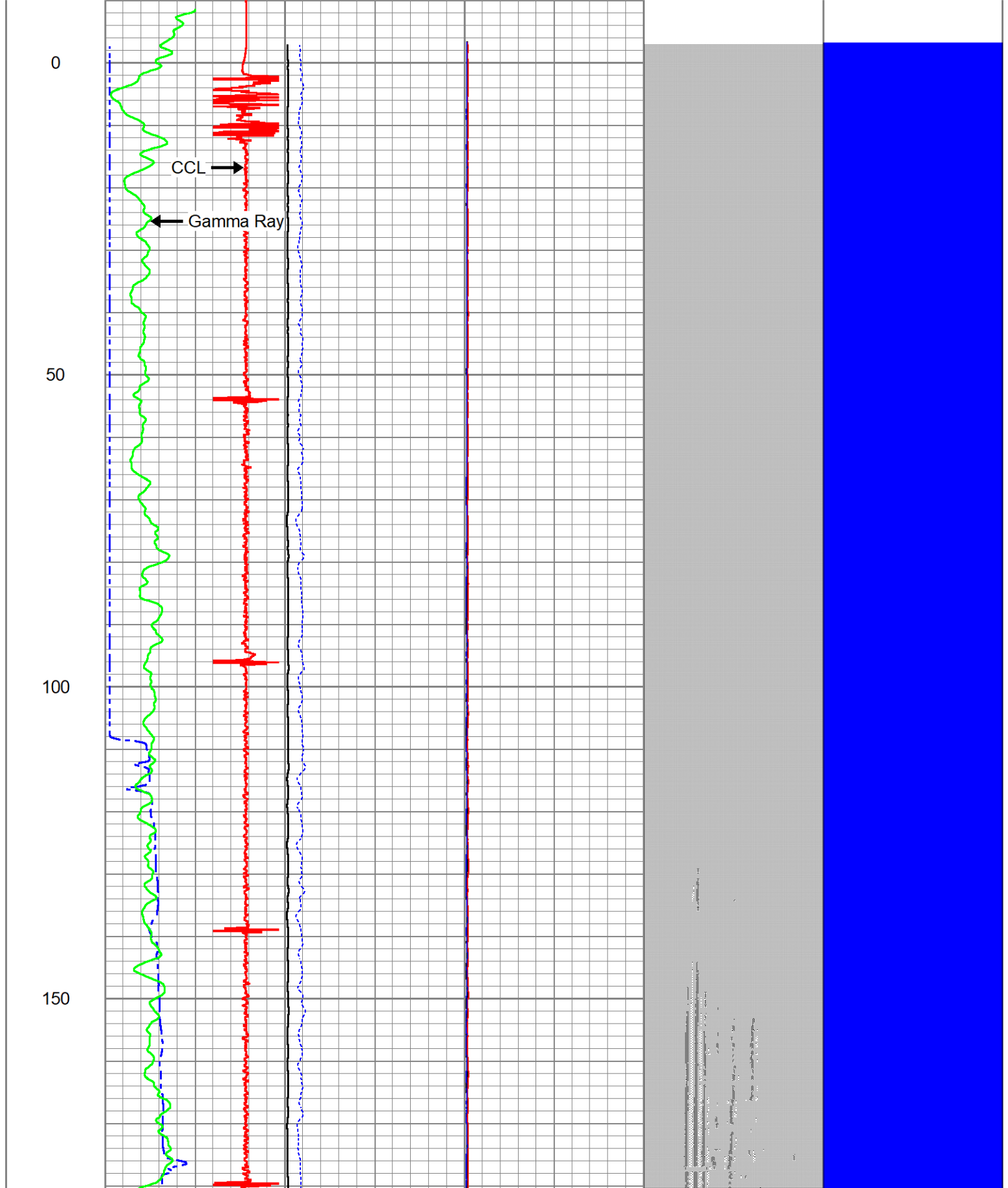
Sensor	Offset (ft)	Schematic	Description	Length (ft)	O.D. (in)	Weight (lb)
			Cable_Head-1_7/16 Titan 1 7/16" Cable Head	1.02	1.44	3.31

			Centralizers-Sondex PRC 2.75" Roller Centralizers Tekco 2 3/4" Adjustable Centralizer	3.00	2.75	25.00
CCL	0.00					
TCF	0.00					
GRHV	0.94					
GR	0.94					
			DSS_HSR_ELE-DSS_HSR_20_ELE (HSR20 0000) DSS 2 3/4" HSR Bond tool - Electronics Module	4.81	2.75	61.00
ROTV	4.10					
THV	4.10					
INTEMP	4.10					
PNEG	4.10					
PPOS	4.10					
WVFS8	6.09					
WVFS7	6.09					
WVFS6	6.09					
WVFS5	6.09					
WVFS4	6.09					
WVFS3	6.09		DSS_HSR_SND-DSS_HSR_20_SND (HSR20 0000) DSS 2 3/4" HSR Bond tool - Sonde Module	7.70	2.75	86.00
WVFS2	6.09					
WVFS1	6.09					
WVFCAL	6.59					
WVF3FT	6.59					
WVF5FT	7.59					
TEMP	11.67					
WVFSYNC	11.80					
			Centralizers-Sondex PRC 2.75" Roller Centralizers Tekco 2 3/4" Adjustable Centralizer	3.00	2.75	25.00

Dataset: chevron-five rivers k08-17d.db: WATTENBERG-90750/FIVE_RIVERS_K08-17D/DSSHSR20-002/RBL_MAIN.1
 Total length: 19.52 ft
 Total weight: 200.31 lb
 O.D.: 2.75 in

Database File chevron-five rivers k08-17d.db
 Dataset Pathname WATTENBERG-90750/FIVE_RIVERS_K08-17D/DSSHSR20-002/RBL_MAIN.1
 Presentation Format ranger_dss_radial
 Dataset Creation Fri Nov 10 15:31:49 2023
 Charted by Depth in Foot scaled 1:240

3' Travel Time		3' Amplitude		0	Radial AVG	100	VDL (5 ft.)		1	RADIAL MAP	6
420	(usec)	90	0	(mV)	100	0	Radial MAX	100	200	(usec)	1200
-20000 CCL 20000		3' Amplitude x5		0	Radial MIN	100					
Gamma Ray		0		(mV)	20						
0 (GAPI) 150											



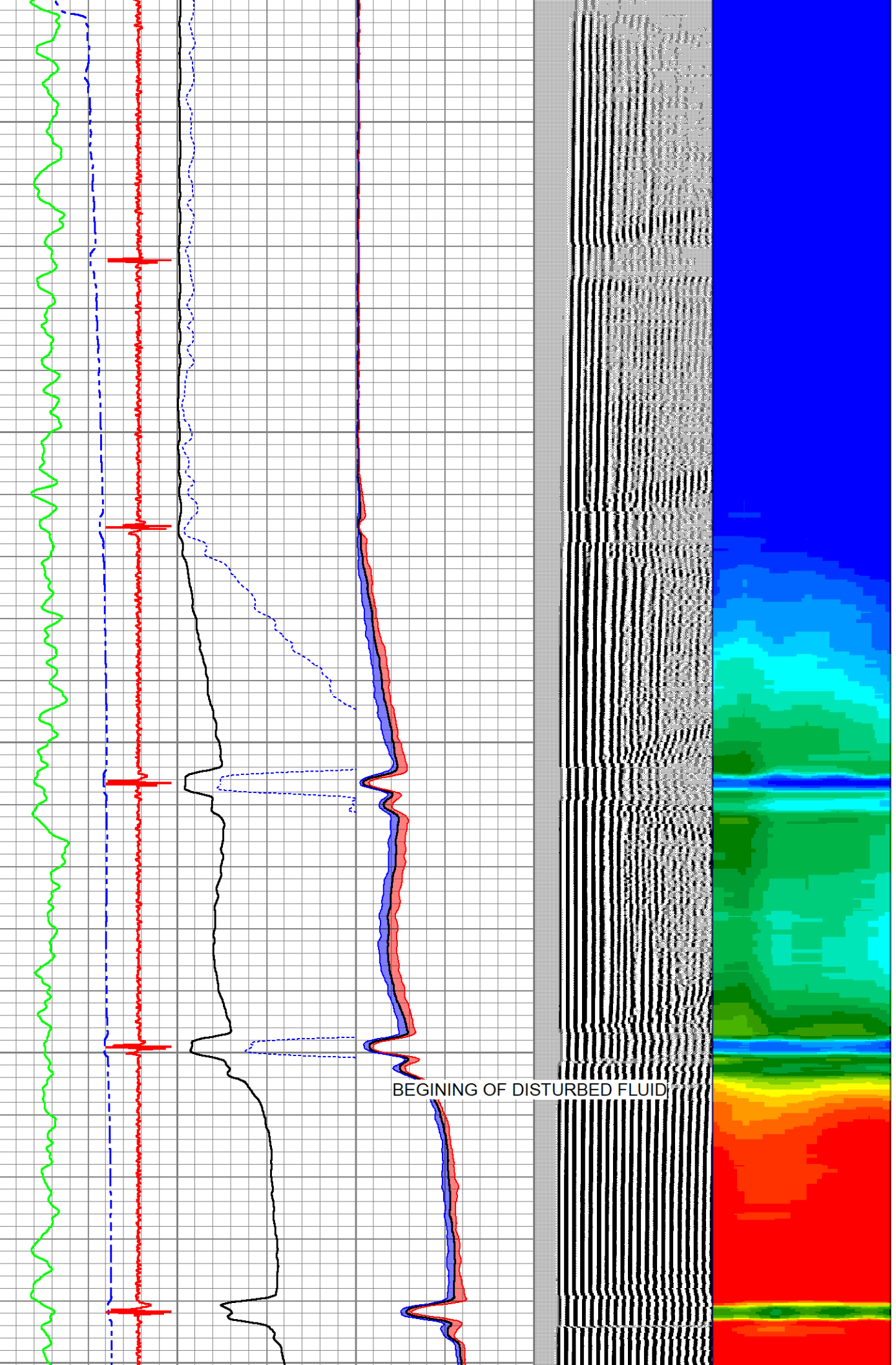
200

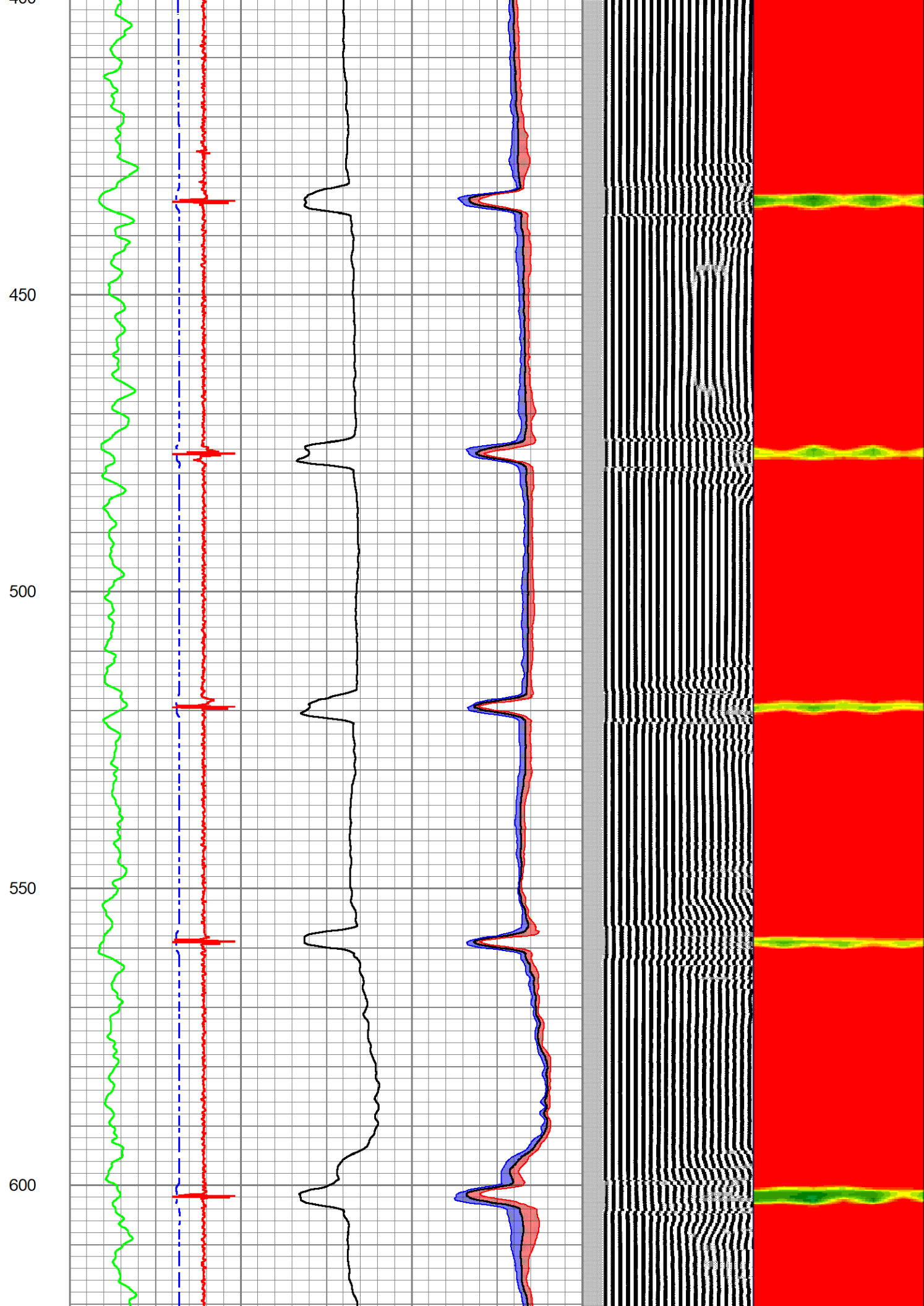
250

300

350

400



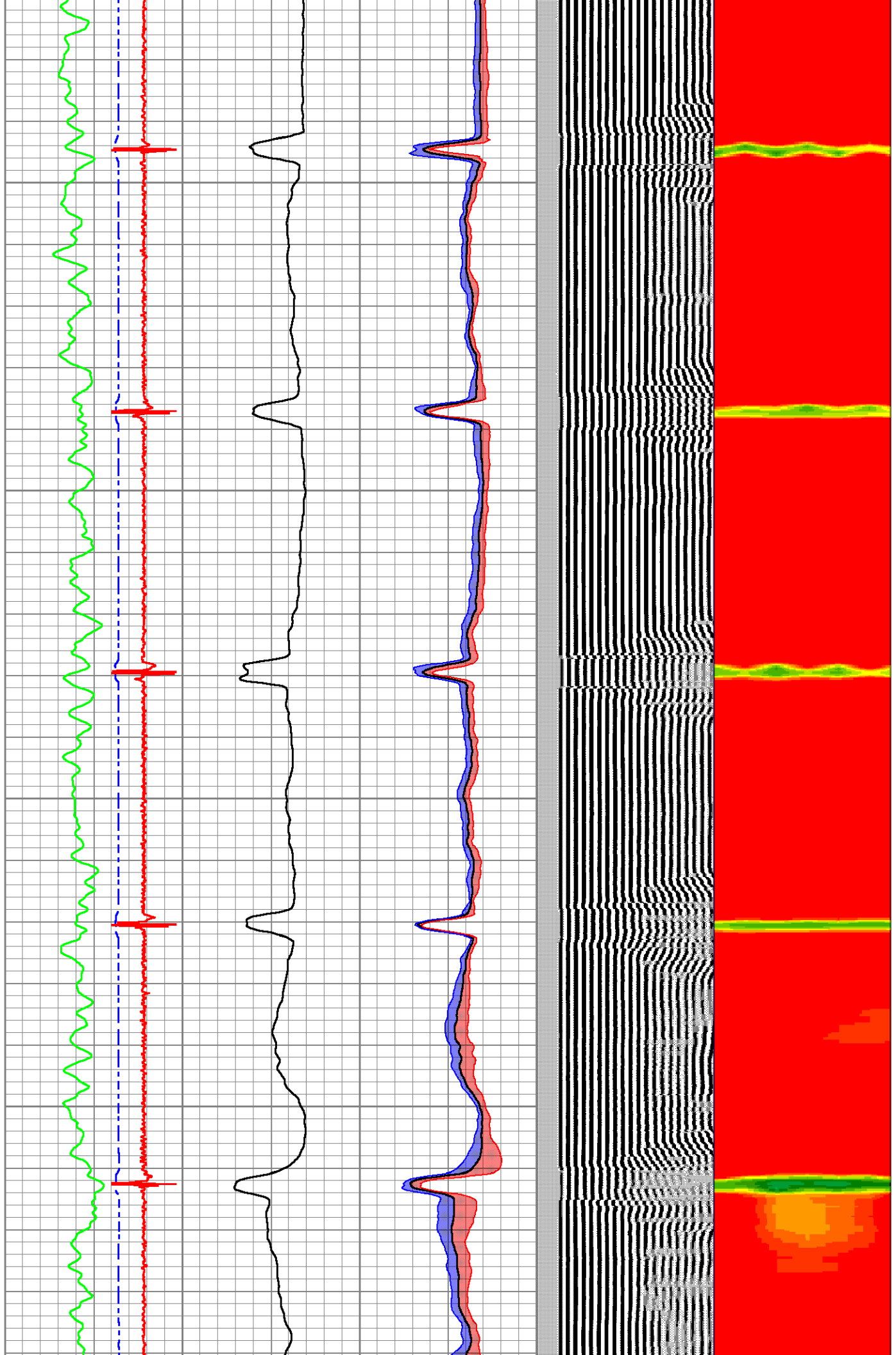


650

700

750

800



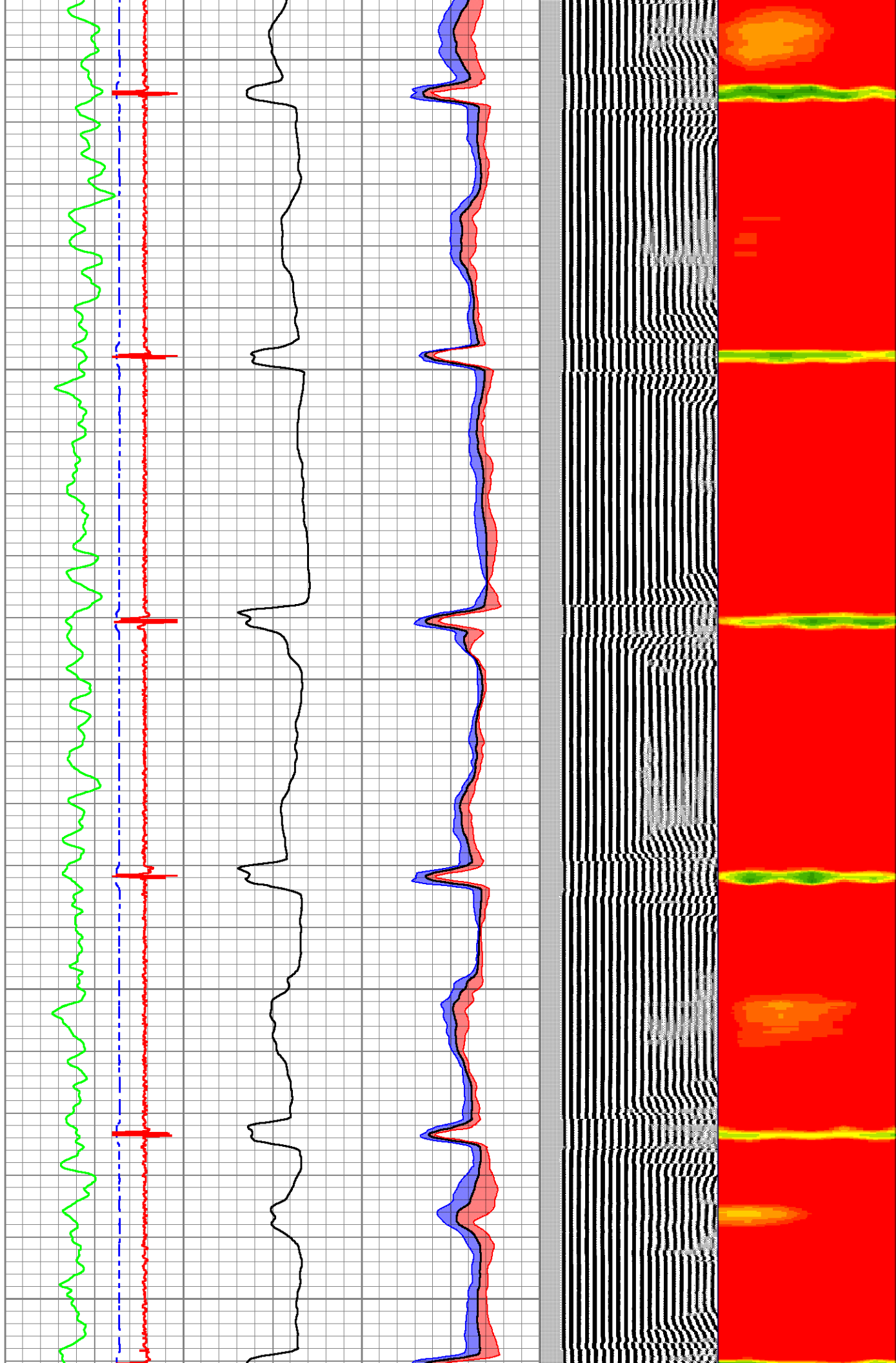
850

900

950

1000

1050

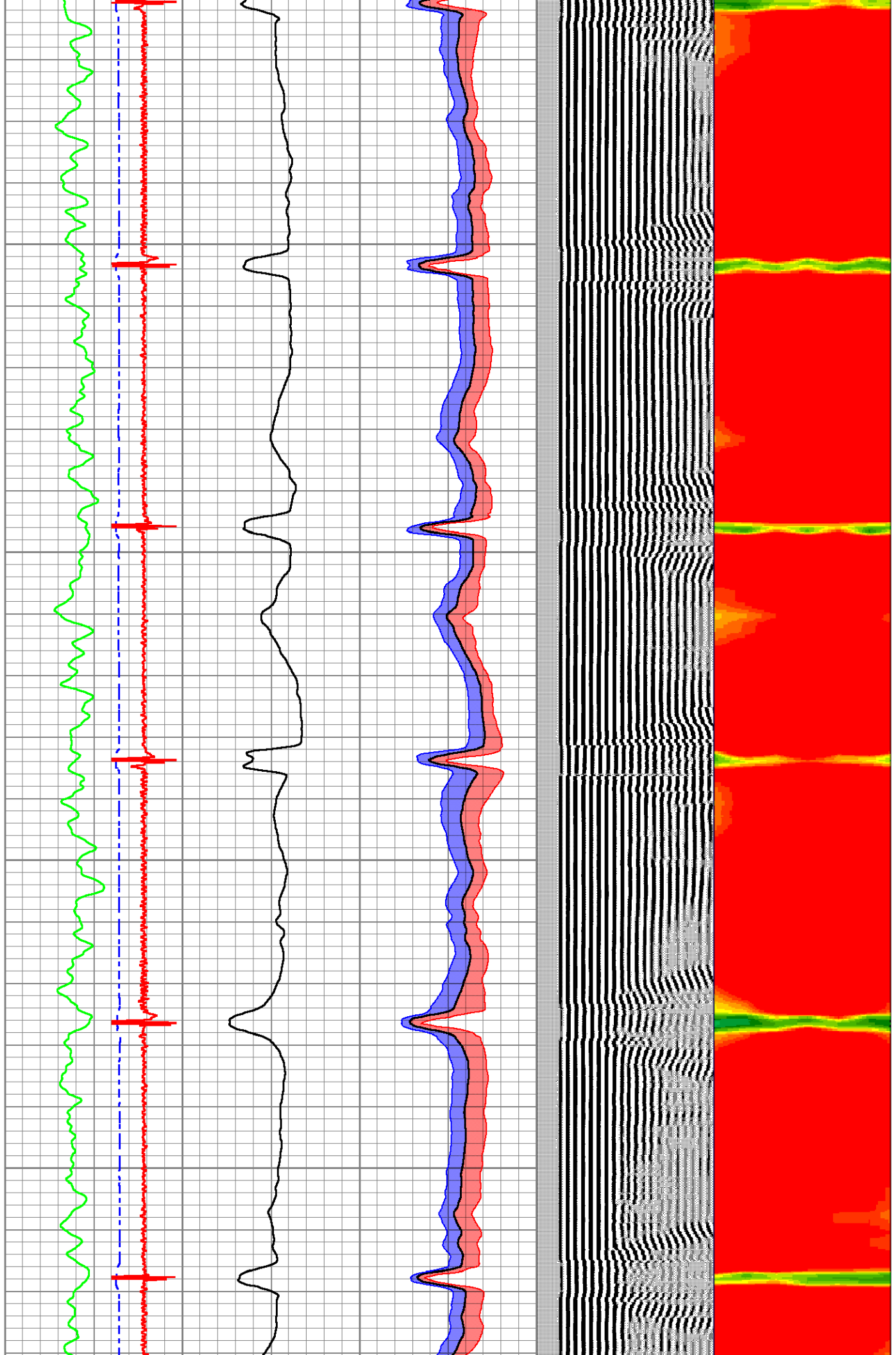


1100

1150

1200

1250



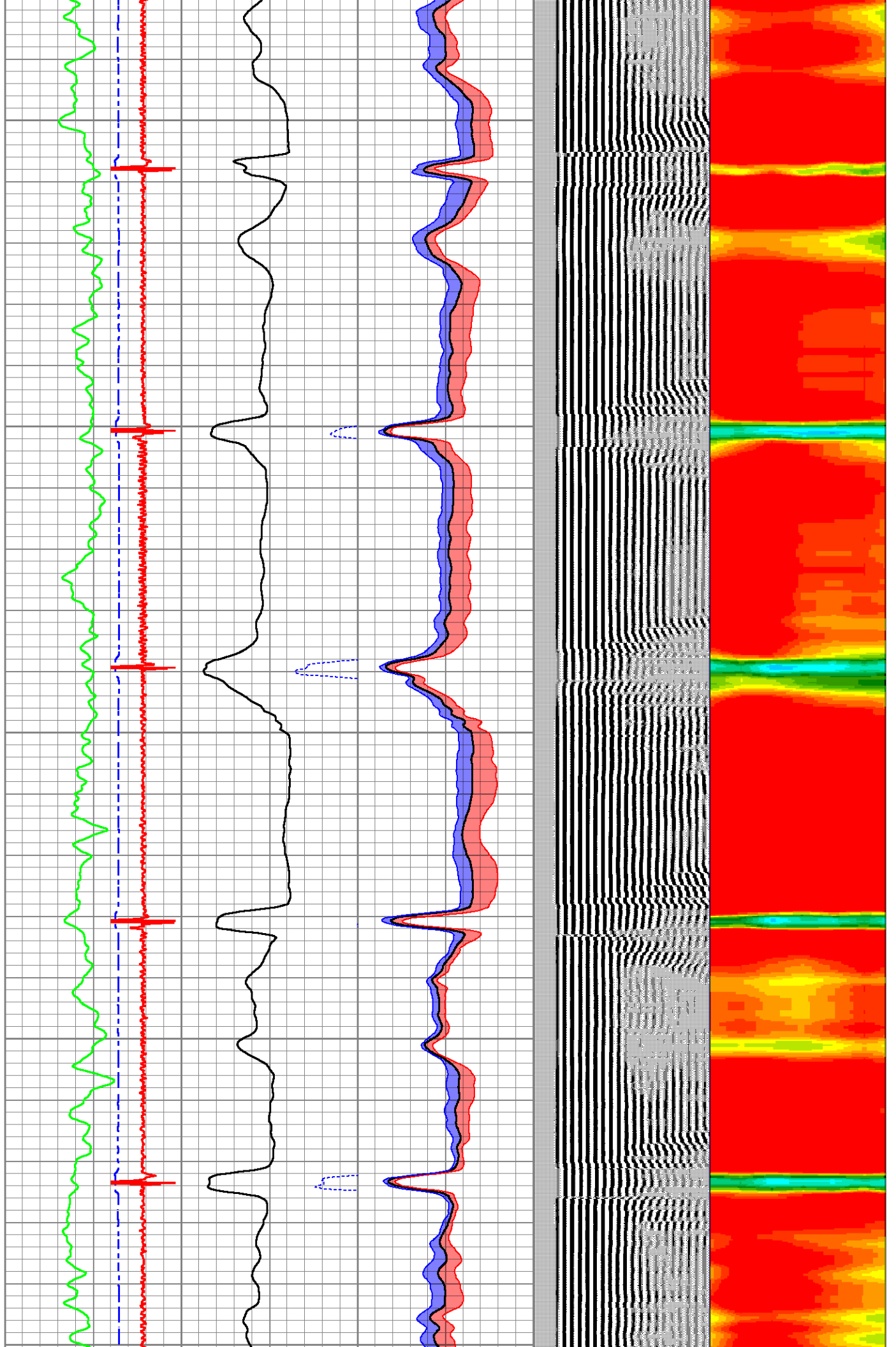
1300

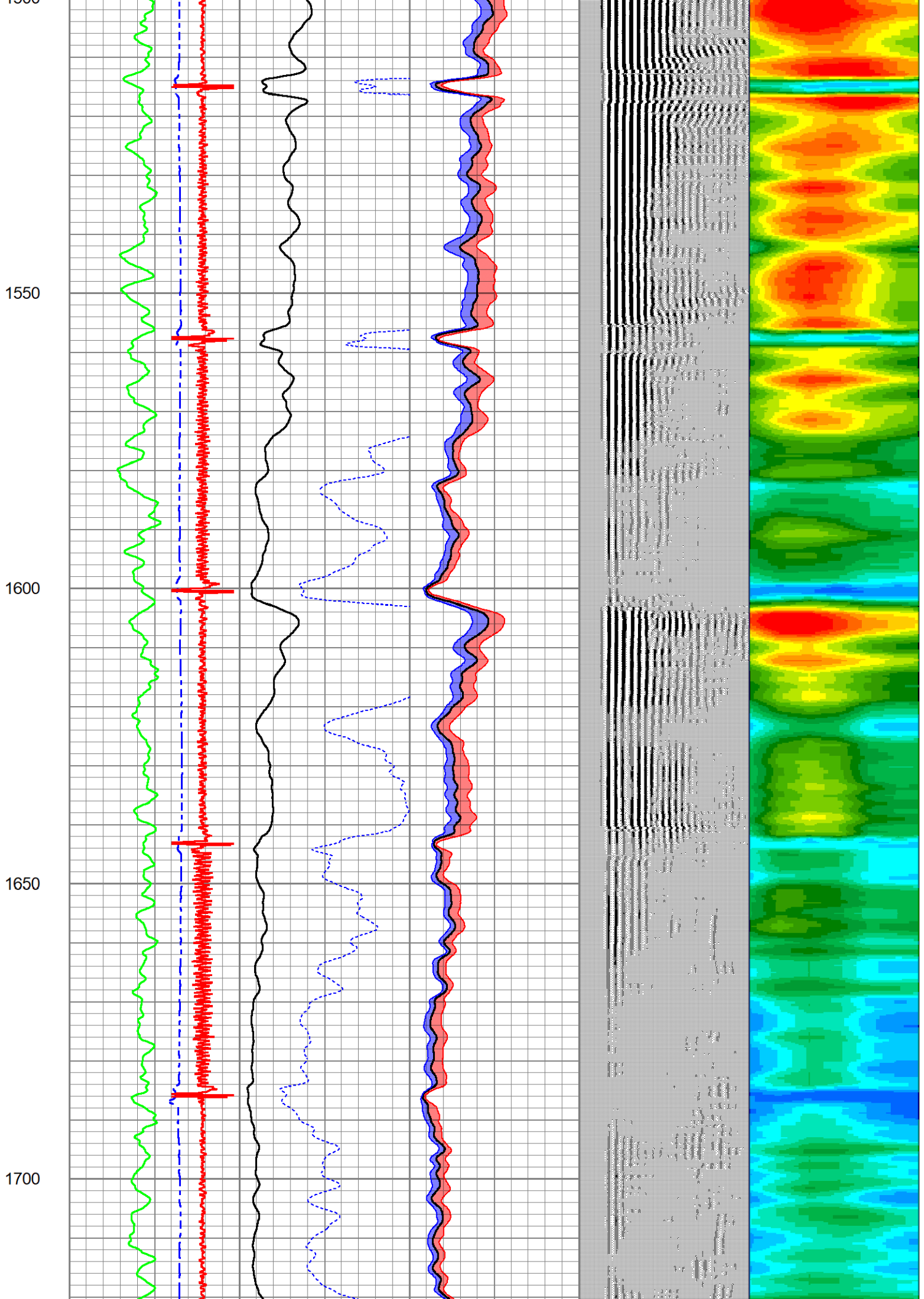
1350

1400

1450

1500



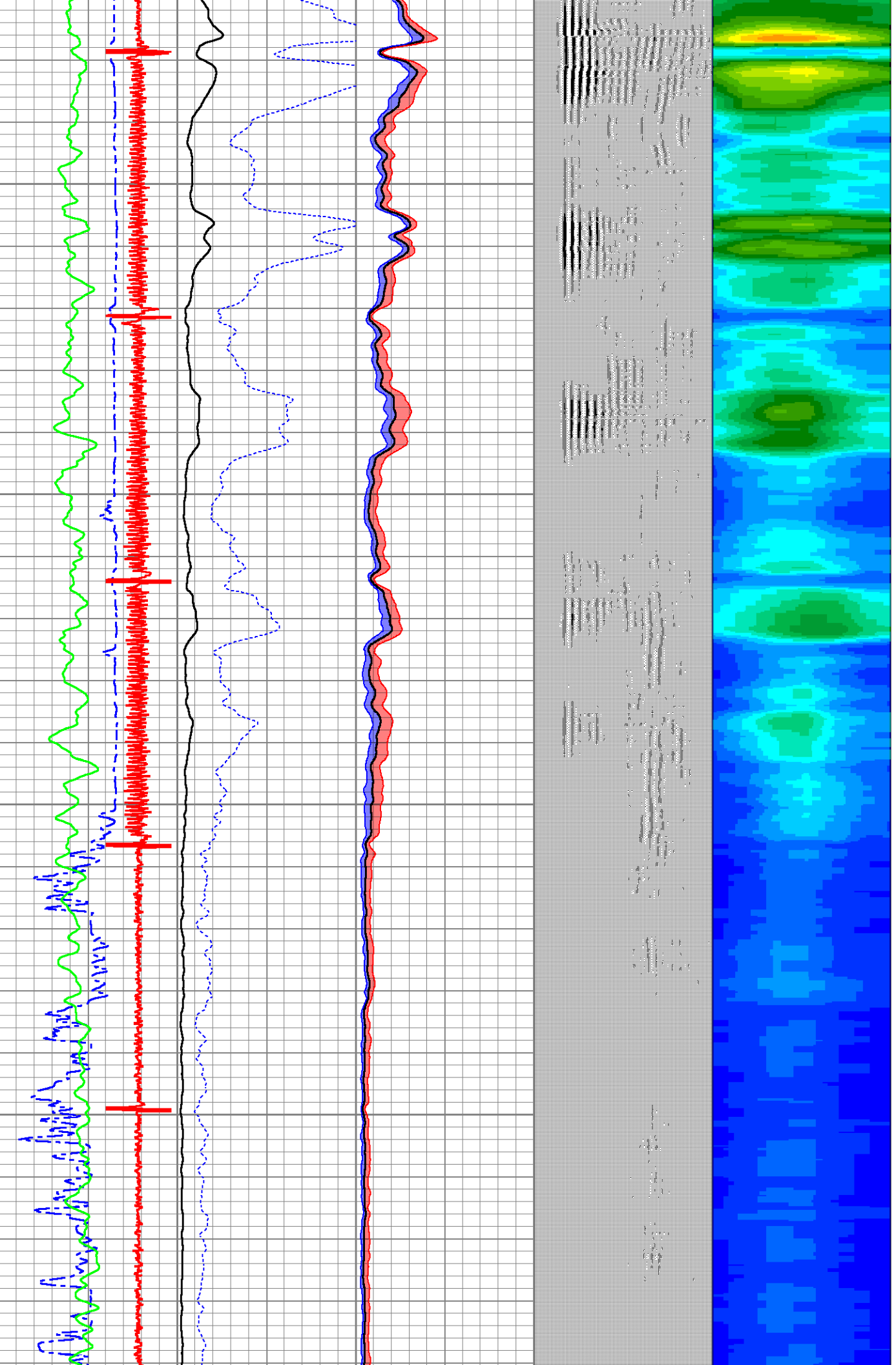


1750

1800

1850

1900



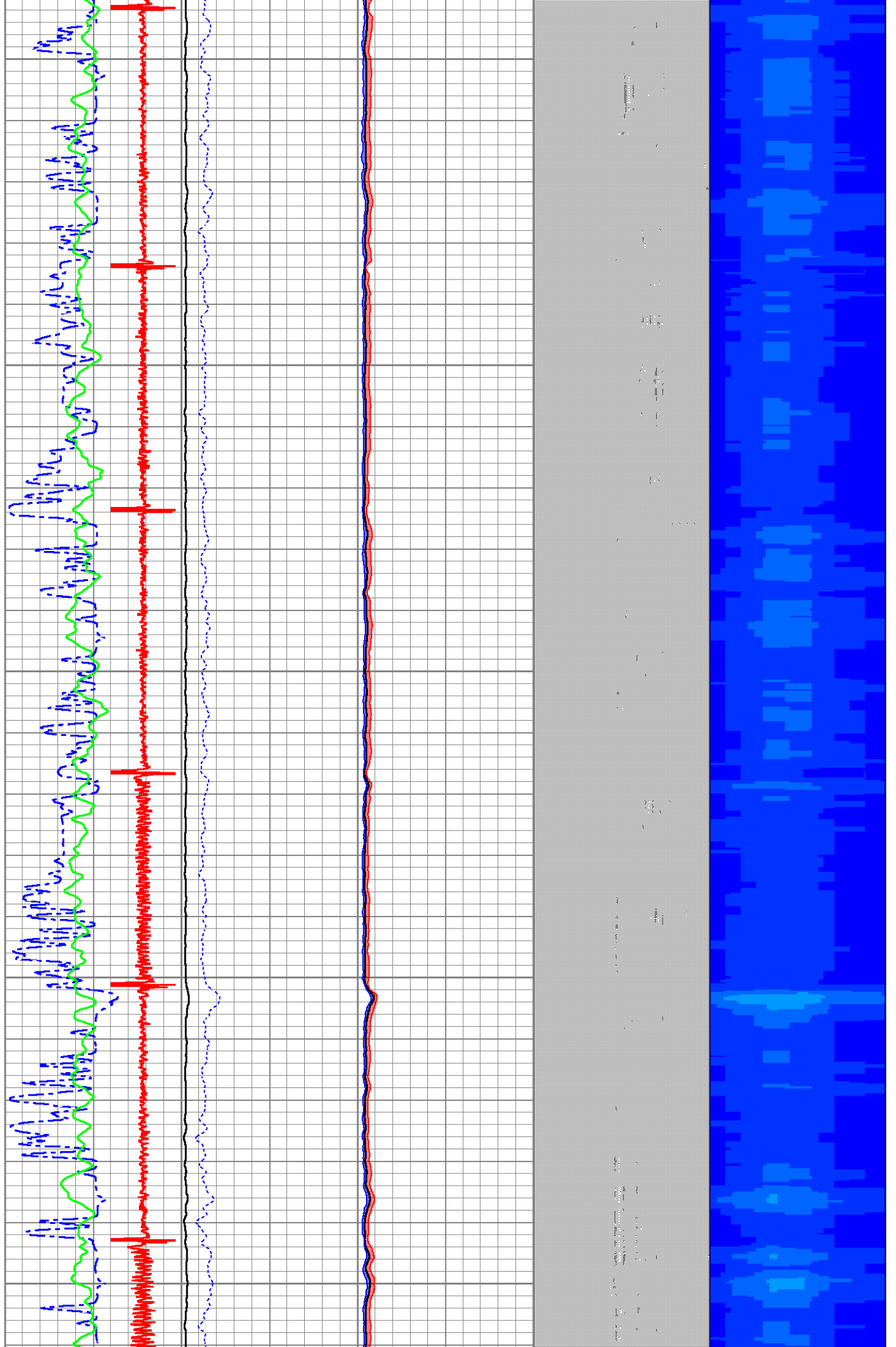
1950

2000

2050

2100

2150

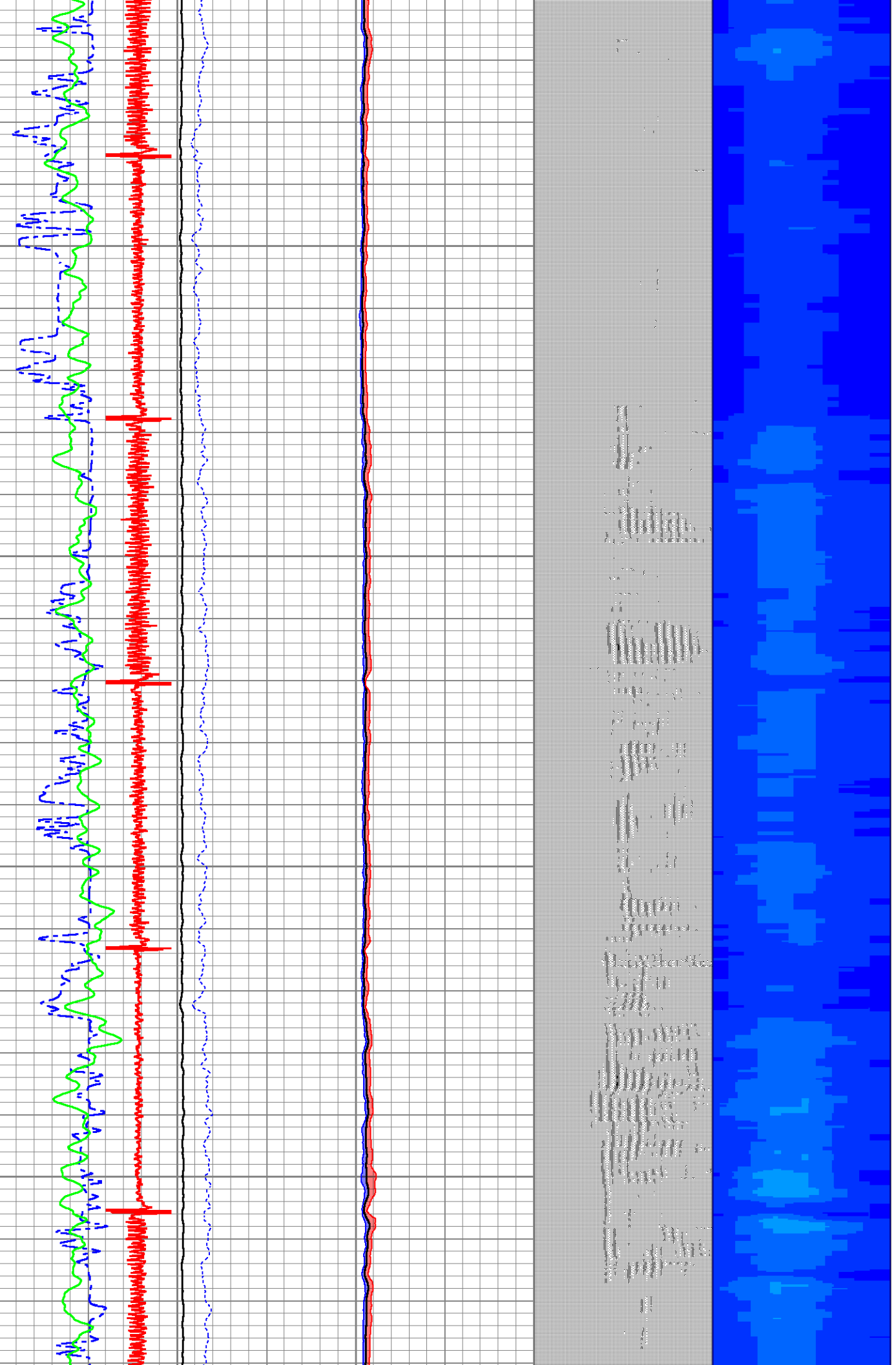


2200

2250

2300

2350



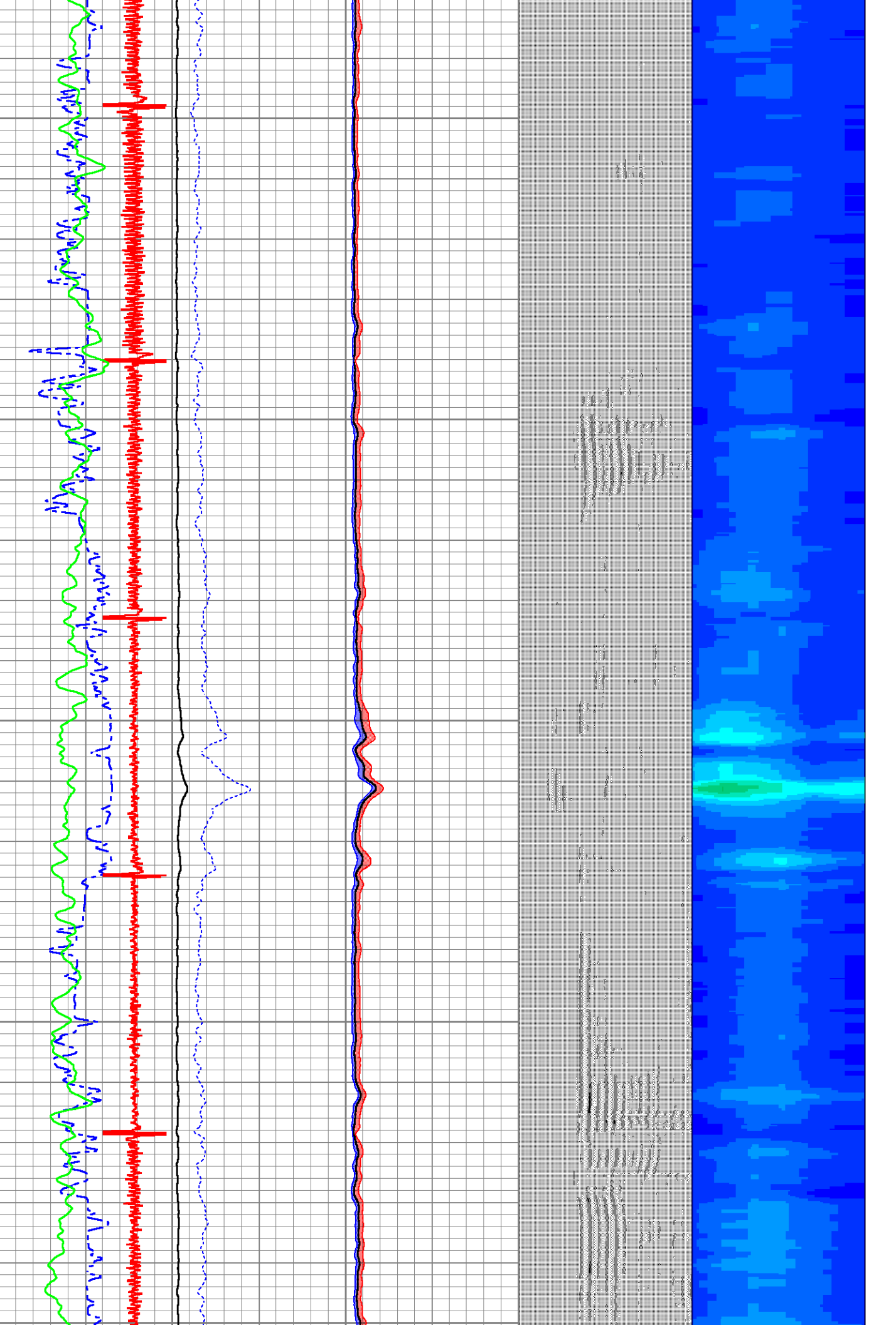
2400

2450

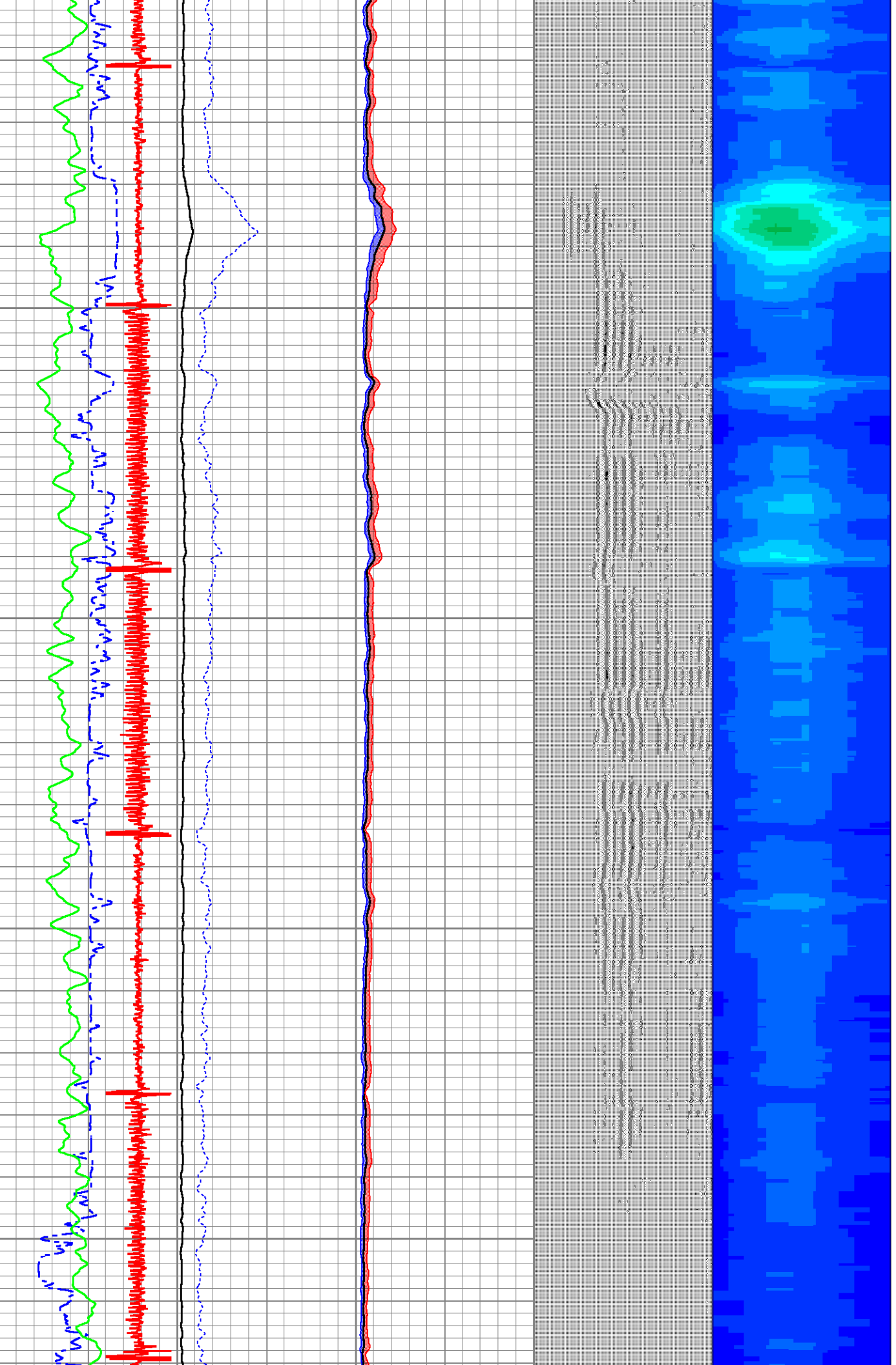
2500

2550

2600



2800
2750
2700
2650
2600

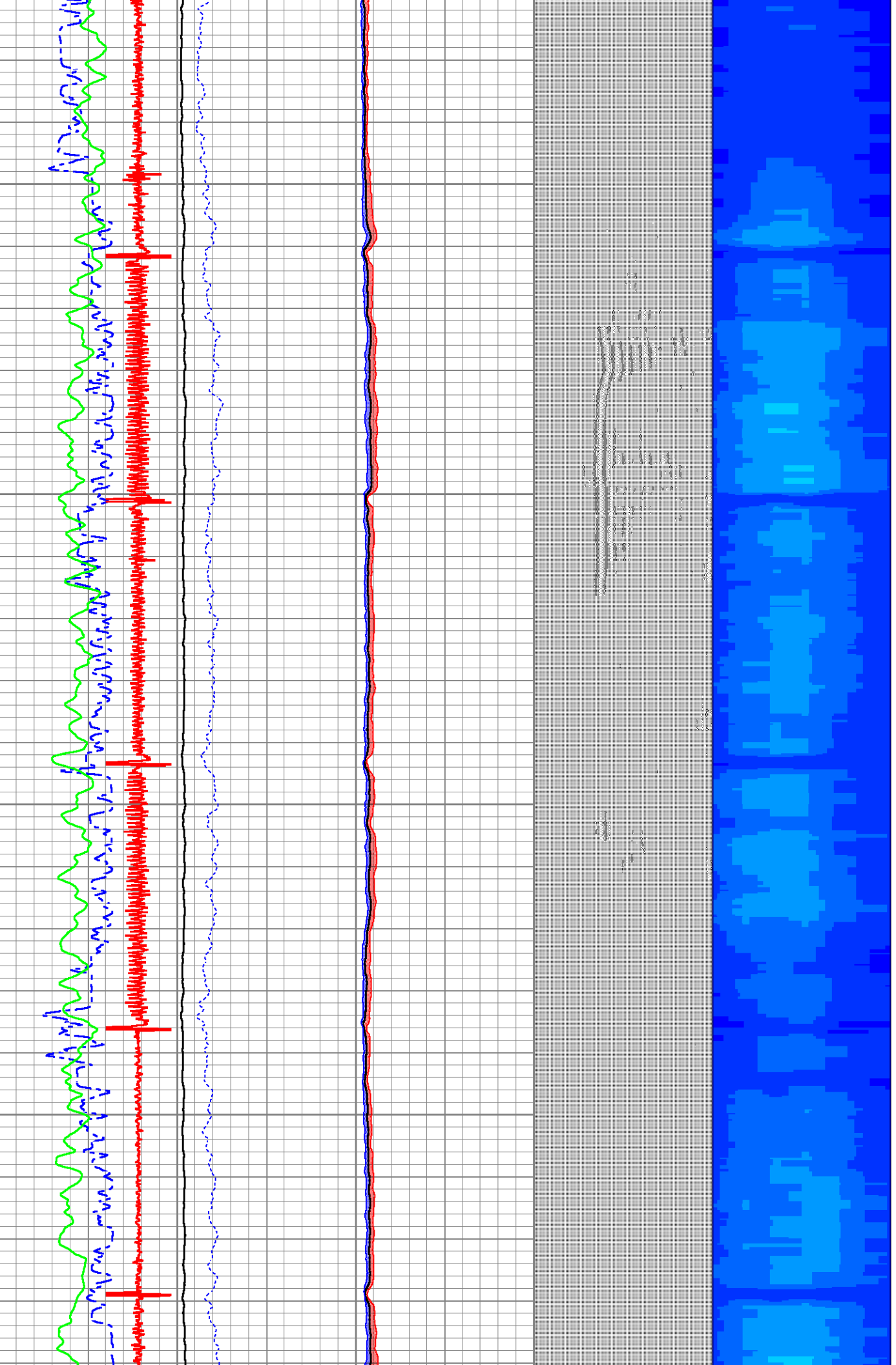


2850

2900

2950

3000



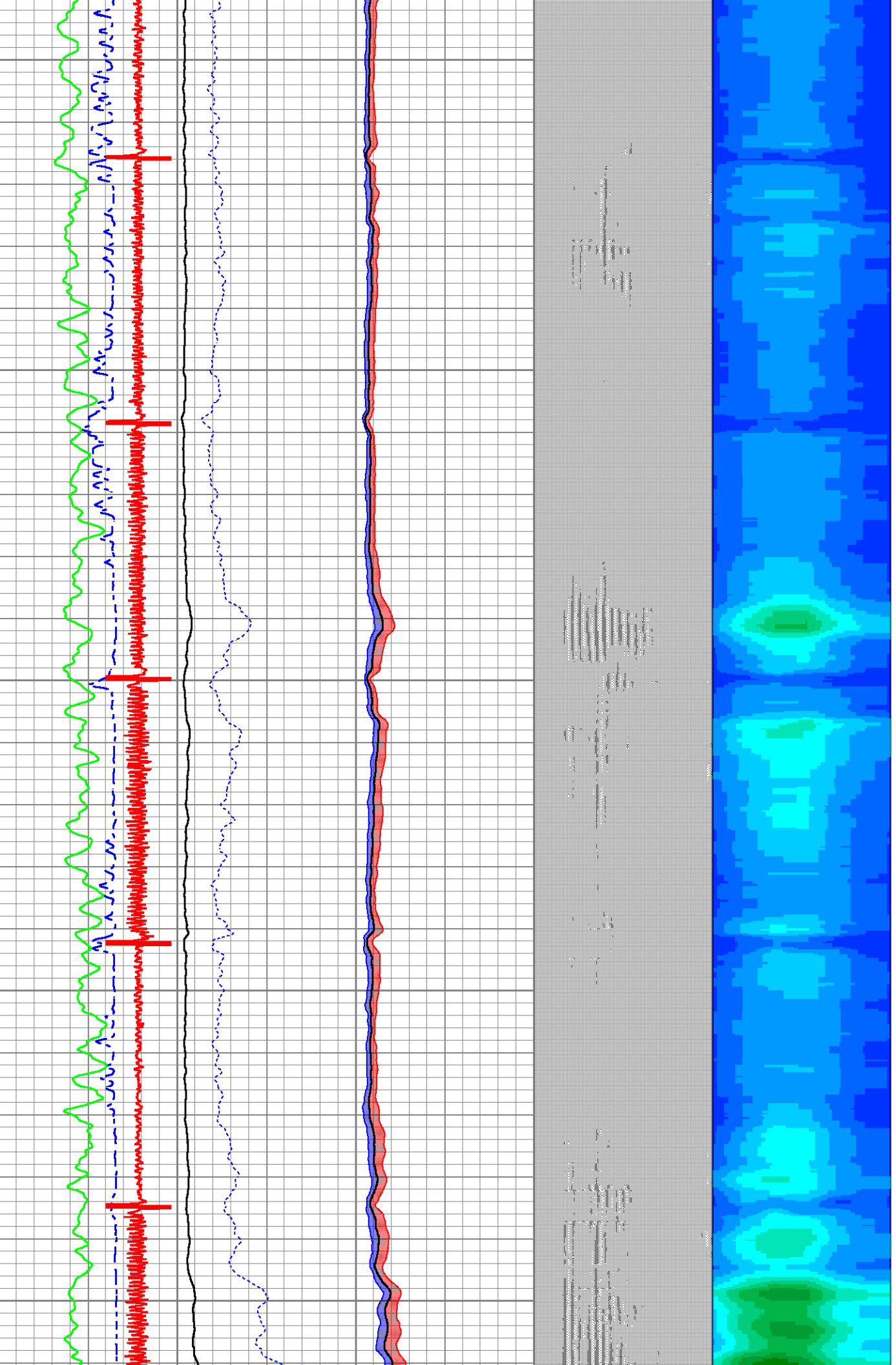
3050

3100

3150

3200

3250

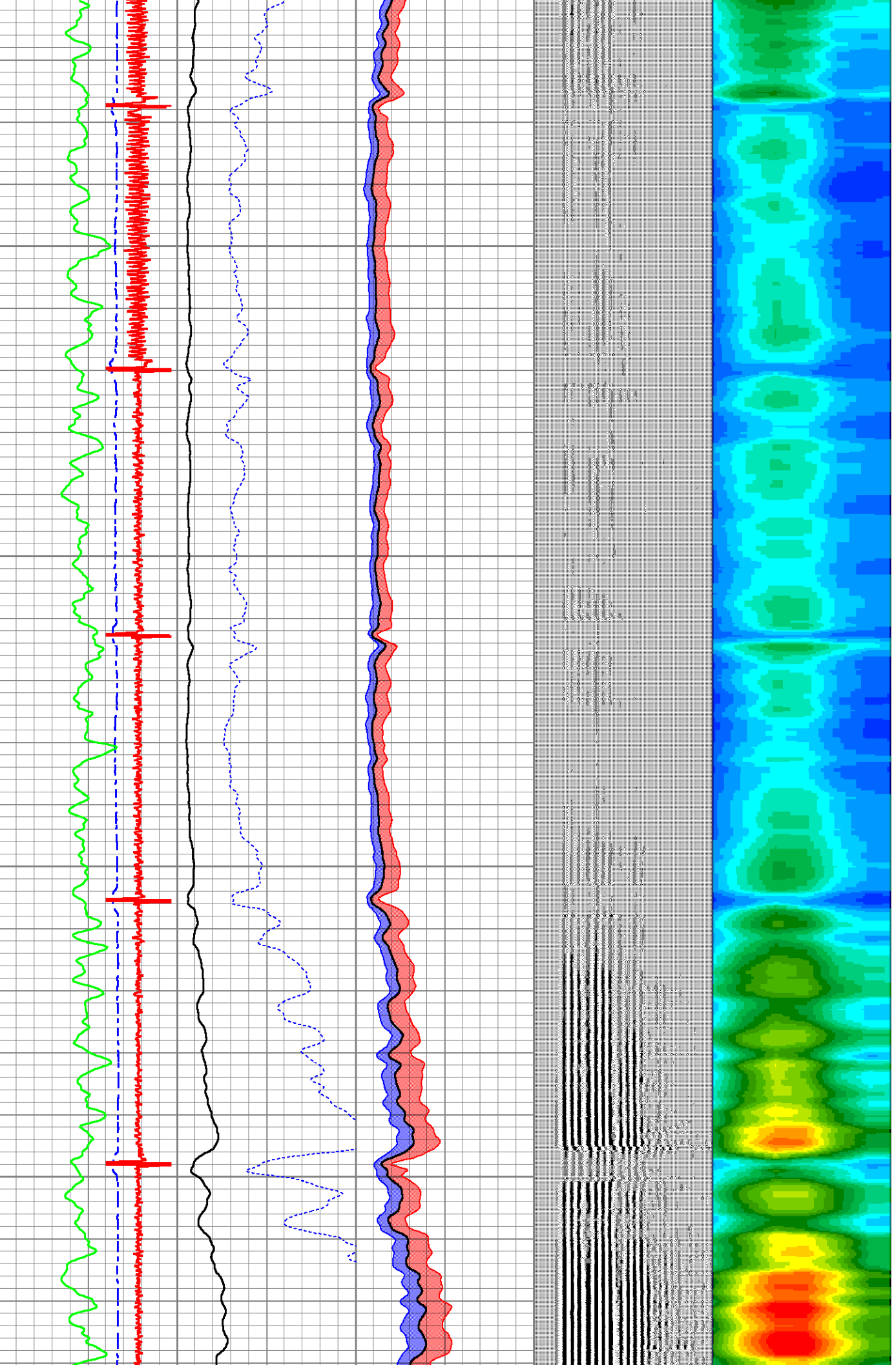


3300

3350

3400

3450



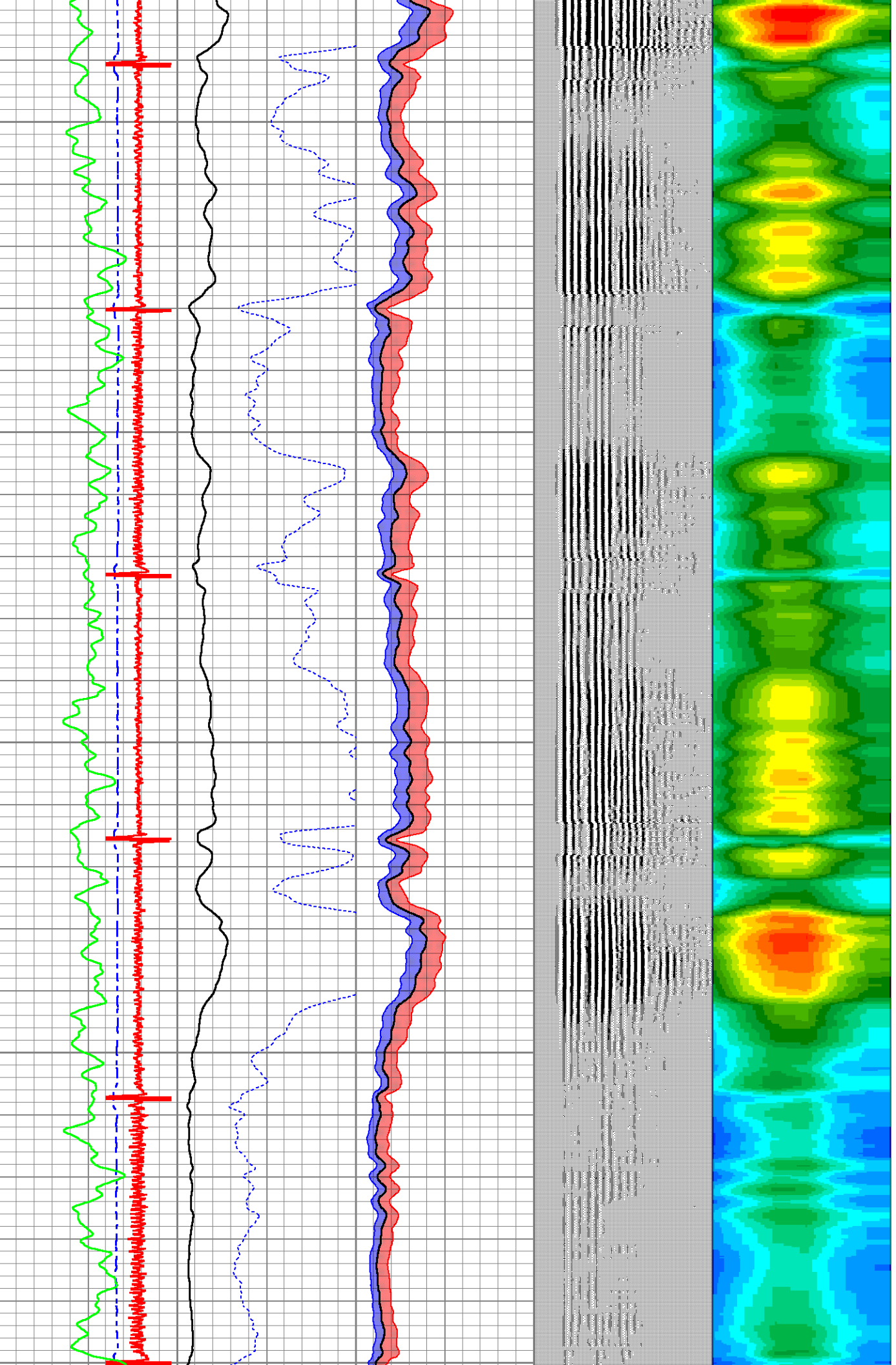
3500

3550

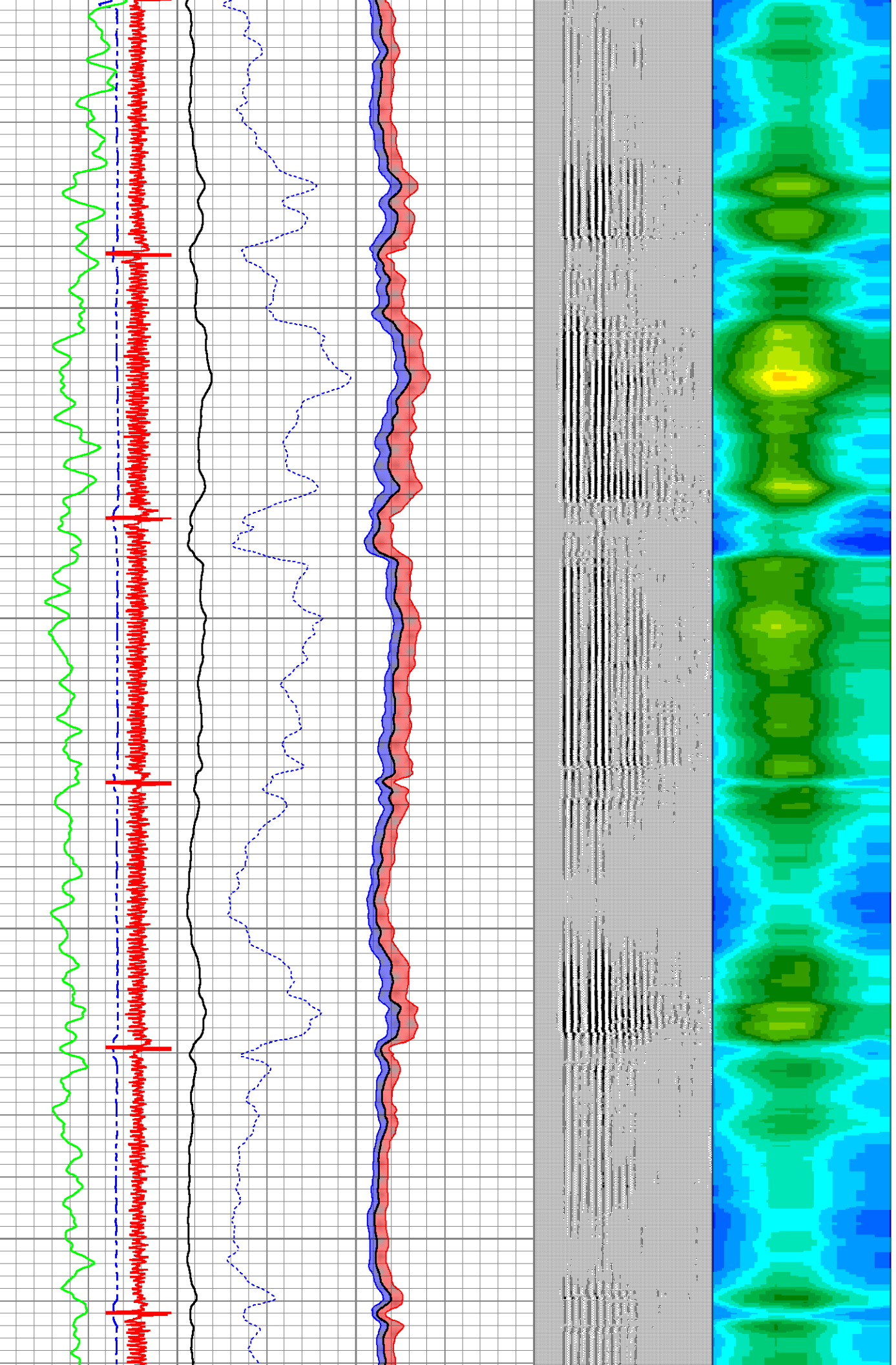
3600

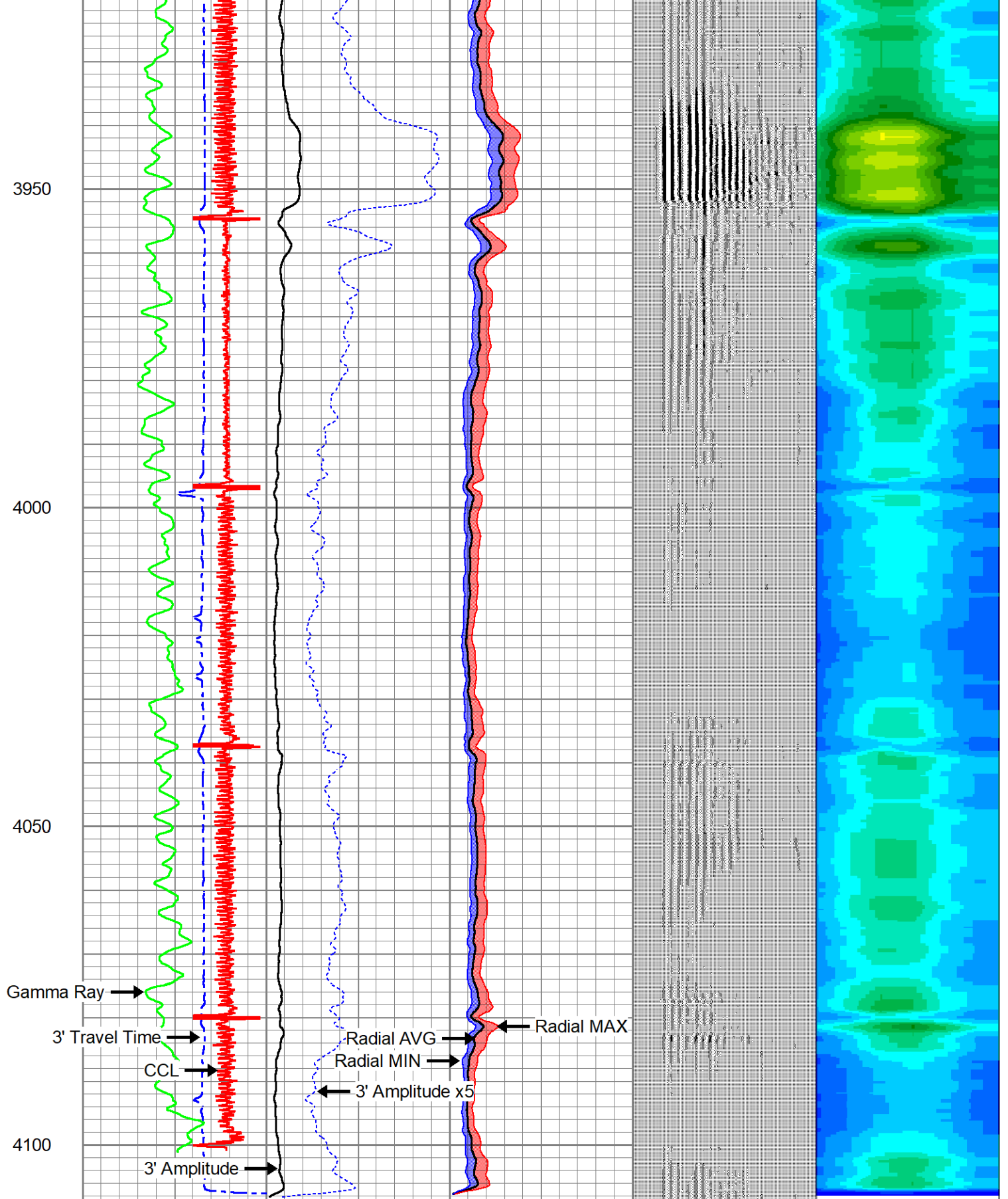
3650

3700



3700
3750
3800
3850
3900





Gamma Ray →

3' Travel Time →

CCL →

3' Amplitude →

Radial AVG →

Radial MIN →

3' Amplitude x5 →

Radial MAX ←

3' Travel Time		3' Amplitude		0	Radial AVG	100	VDL (5 ft.)		1	RADIAL MAP	6
420	(usec)	90	0	(mV)	100	0	Radial MAX	100	200	(usec)	1200
-20000 CCL 20000		3' Amplitude x5		0	Radial MIN	100					
Gamma Ray		0		(mV)	20						



Company	CHEVRON	
Well	FIVE RIVERS K 08-17D	
Field	WATTENBERG - 90750	
County	WELD	
State	COLORADO	Country U.S.A.