

Inspection Photos

Location Name: TEP ROCKY MOUNTAIN LLC SNYDER A Pad

Location ID: 311651



Photo # 8975 From entrance to location



Photo # 8976 Location

Inspection Photos
Location Name: TEP ROCKY MOUNTAIN LLC SNYDER A Pad
Location ID: 311651



Photo # 8977 Location



Photo # 8978 Location

Inspection Photos

Location Name: TEP ROCKY MOUNTAIN LLC SNYDER A Pad

Location ID: 311651



Photo # 8979 Location



Photo # 8980 Location

Inspection Photos

Location Name: TEP ROCKY MOUNTAIN LLC SNYDER A Pad

Location ID: 311651



Photo # 8981 Location



Photo # 8982 Location



Inspection Photos

Location Name: TEP ROCKY MOUNTAIN LLC SNYDER A Pad

Location ID: 311651



Photo # 8983 Possible wellhead leak/gas bubbling up around wellhead through water in cellar



Photo # 8984 Possible wellhead leak/gas bubbling up around wellhead through water in cellar

Inspection Photos

Location Name: TEP ROCKY MOUNTAIN LLC SNYDER A Pad

Location ID: 311651



Photo # 8985 Possible leak/gas bubbling up through water in cellar around bradenhead line



Photo # 8986 Mouse hole not properly covered & open to entry by wildlife/wildlife hazard

Inspection Photos
Location Name: TEP ROCKY MOUNTAIN LLC SNYDER A Pad
Location ID: 311651

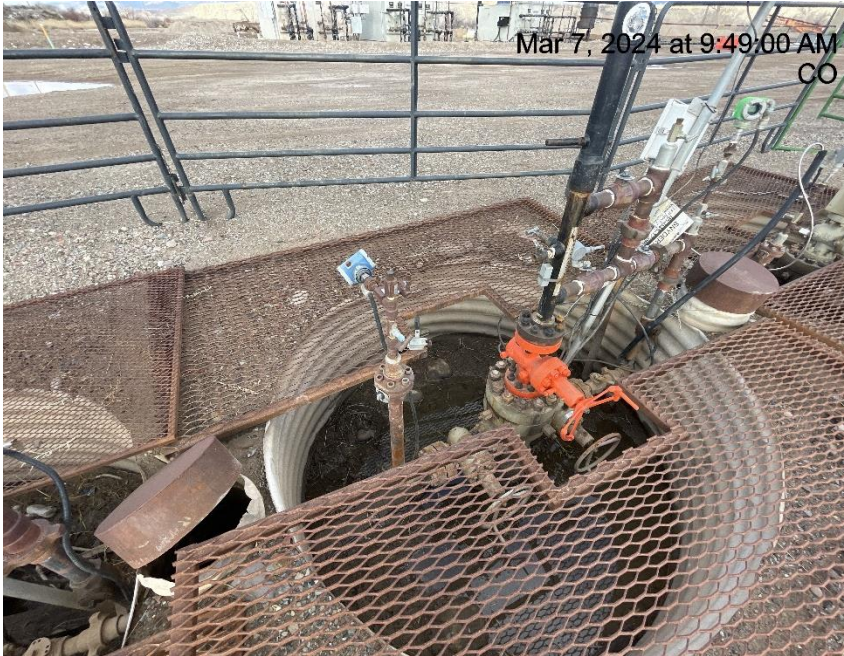


Photo # 8987 Cellar not properly covered/wildlife & personnel hazard & cellar lacks wildlife egress

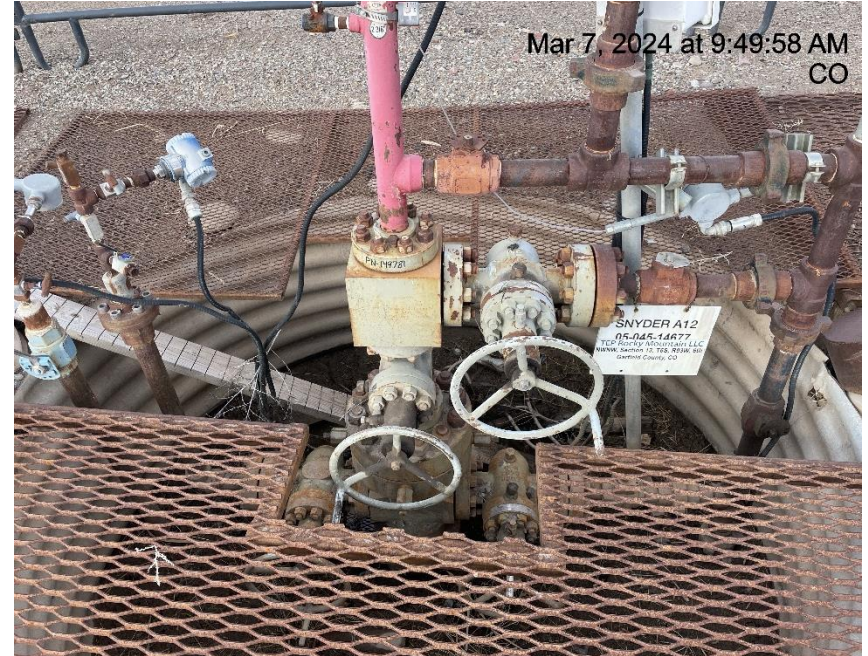


Photo # 8988 Cellar not properly covered/wildlife & personnel hazard

Inspection Photos

Location Name: TEP ROCKY MOUNTAIN LLC SNYDER A Pad

Location ID: 311651



Photo # 8989 Cellar not properly covered/wildlife & personnel hazard



Photo # 8990 PRV vent line terminates in an unsafe manner/does not comply with CECMC pressure safety device rules & general safety rules

Inspection Photos

Location Name: TEP ROCKY MOUNTAIN LLC SNYDER A Pad

Location ID: 311651



Photo # 8991 Unmarked deadman



Photo # 8992 Same unmarked deadman from a different angle

Inspection Photos

Location Name: TEP ROCKY MOUNTAIN LLC SNYDER A Pad

Location ID: 311651



Photo # 8993 Stained soils & gravel



Photo # 8994 Stained soils & gravel

Inspection Photos

Location Name: TEP ROCKY MOUNTAIN LLC SNYDER A Pad

Location ID: 311651



Photo # 8995 Stained soils & gravel



Photo # 8996 Stained soils & gravel

Inspection Photos
Location Name: TEP ROCKY MOUNTAIN LLC SNYDER A Pad
Location ID: 311651



Photo # 8997 Stained soils & gravel



Photo # 8998 Battery sign laying on ground/not properly posted

Inspection Photos
Location Name: TEP ROCKY MOUNTAIN LLC SNYDER A Pad
Location ID: 311651



Photo # 8999 Debris



Photo # 9000 Debris

Inspection Photos

Location Name: TEP ROCKY MOUNTAIN LLC SNYDER A Pad

Location ID: 311651



Photo # 9001 Debris



Photo # 9002 Debris

Inspection Photos

Location Name: TEP ROCKY MOUNTAIN LLC SNYDER A Pad

Location ID: 311651



Photo # 9003 Debris



Photo # 9004 Debris