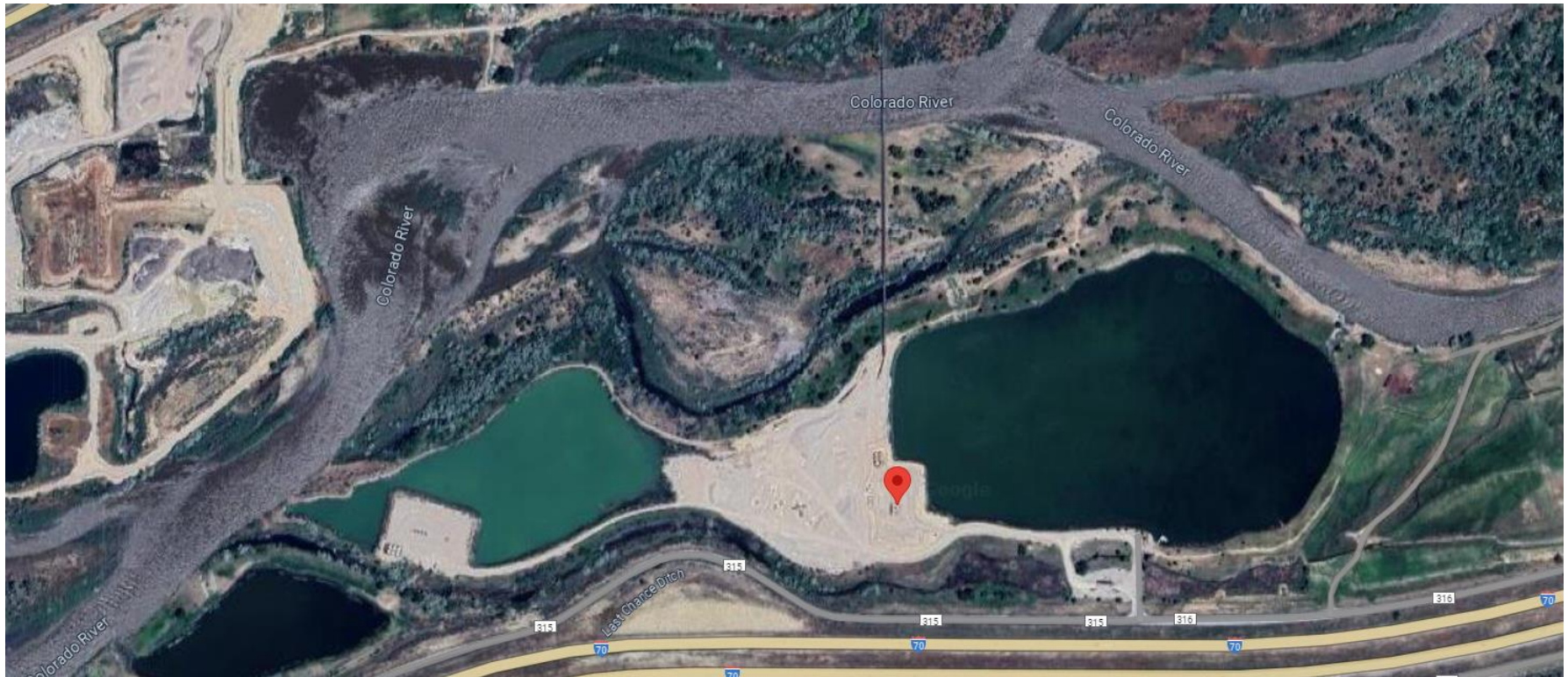


Storm Water Management and Erosion control
Location Name: TEP ROCKY MOUNTAIN LLC SNYDER A Pad
Location ID: 311651



Location Overview: Location is within High Priority/Density/Black Bear Habitat areas & multiple Bald Eagle Roost Sites & in close proximity to NSO Habitat area. Location is within Rule 411a Surface Water Internal Buffer. Location is approximately 400 yards from the Colorado River. Location is within close proximity to multiple National Wetlands Inventory areas.
Section/Township/Range: 13 6S93W



COLORADO
Energy & Carbon Management
Commission
Department of Natural Resources

Storm Water Management and Erosion control
Location Name: TEP ROCKY MOUNTAIN LLC SNYDER A Pad
Location ID: 311651



Location Overview



Storm water Management and Erosion control
Location Name: TEP ROCKY MOUNTAIN LLC SNYDER A Pad
Location ID: 311651



North West corner of location.



North East corner of location.



South West corner of location.



South East corner of location.

Storm water Management and Erosion control
Location Name: TEP ROCKY MOUNTAIN LLC SNYDER A Pad
Location ID: 311651



Photo # 9005 Wattles need maintenance



Photo # 9006 Wattles need maintenance

Storm water Management and Erosion control
Location Name: TEP ROCKY MOUNTAIN LLC SNYDER A Pad
Location ID: 311651



Photo # 9007 Wattles need maintenance



Photo # 9008 Erosion & transport of sediment onto location/insufficient BMP's