

Contractor JB Bigson Drilling Top Choke 1"
 Rig No. 93 Bottom Choke 3/4"
 Spot SF SW Size Hole 7 7/8"
 Sec. 14 Size Rat Hole --
 Twp. 16 S Size & Wt. D. P. 4 1/2" XH 16.60#
 Rng. 42 W Size Wt. Pipe --
 Field Wildcat I. D. of D. C. 2 1/8"
 County Cheyenne Length of D. C. 523 ft
 State Colorado Total Depth 5411 ft
 Elevation 4005 ft Interval Tested 978-996 ft
 Formation Code 11 Type of Test Inflate Straddle

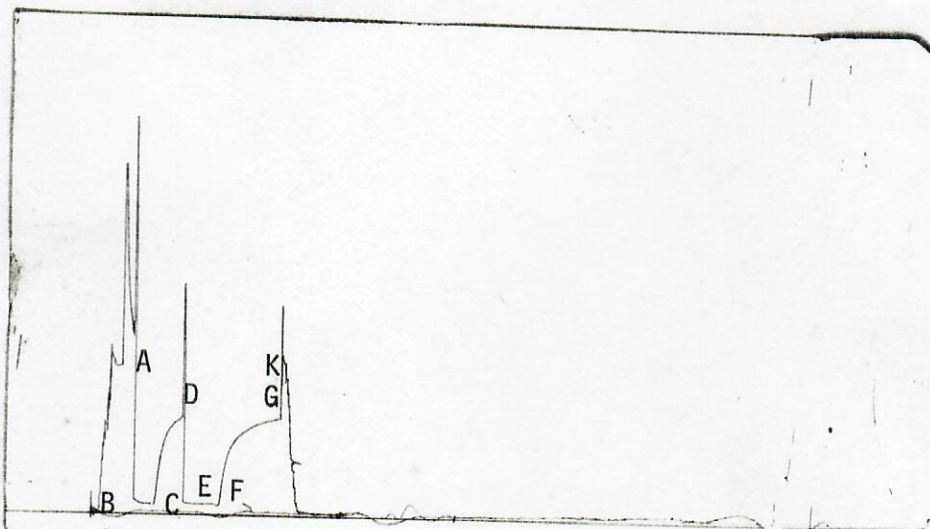
Flow No. 1 30 Min.
 Shut-in No. 1 60 Min.
 Flow No. 2 60 Min.
 Shut-in No. 2 120 Min.
 Flow No. 3 -- Min.
 Shut-in No. 3 -- Min.

Bottom Hole Temp. 67°F
 Mud Weight 9.1
 Gravity --
 Viscosity 10

Tool opened @ 10:25 a.m.



00520761



Outside Recorder

PRD Make Kuster K-3
 No. 9857 Cap. 1450 @ 982'

Press	Corrected
Initial Hydrostatic A	490
Final Hydrostatic K	507
Initial Flow B	42
Final Initial Flow C	28
Initial Shut-in D	308
Second Initial Flow E	35
Second Final Flow F	28
Second Shut-in G	306
Third Initial Flow H	--
Third Final Flow I	--
Third Shut-in J	--

Lynes Dist.: Casper, WY
 Our Tester: Doug Bobbitt
 Witnessed By: _____

Did Well Flow - Gas NO Oil NO Water NO

RECOVERY IN PIPE:

3 ft Drilling mud recovered

Blow Description

1st flow: Tool opened with 1 inch blow, slowly decreased to 1/2 inch in 5 minutes, decreased to bubbles in 24 minutes and died in 25 minutes.

2nd flow: Tool opened with very weak surface blow, dying in 7 minutes.

Comments: The test results indicate a mechanically successful test. The flow and shut-in curves suggest low permeability within the zone tested. The initial final shut-in curves were incremented and plotted but no accurate extrapolations were done due to insufficient curve development.

Operator Texas Oil & Gas
 Address Box 1155
Lamar, Colorado 81052
 Ticket No. 02312
 Well Name and No. Evans #1

Date 2-1-84

DST No. 2
 No. Final Copies 5

Location: 14-16S-42W
Test Type: INFLATE STRADDLE
Formation: CODELL

Recorder Number: 9857
Recorder Depth: 982 ft.

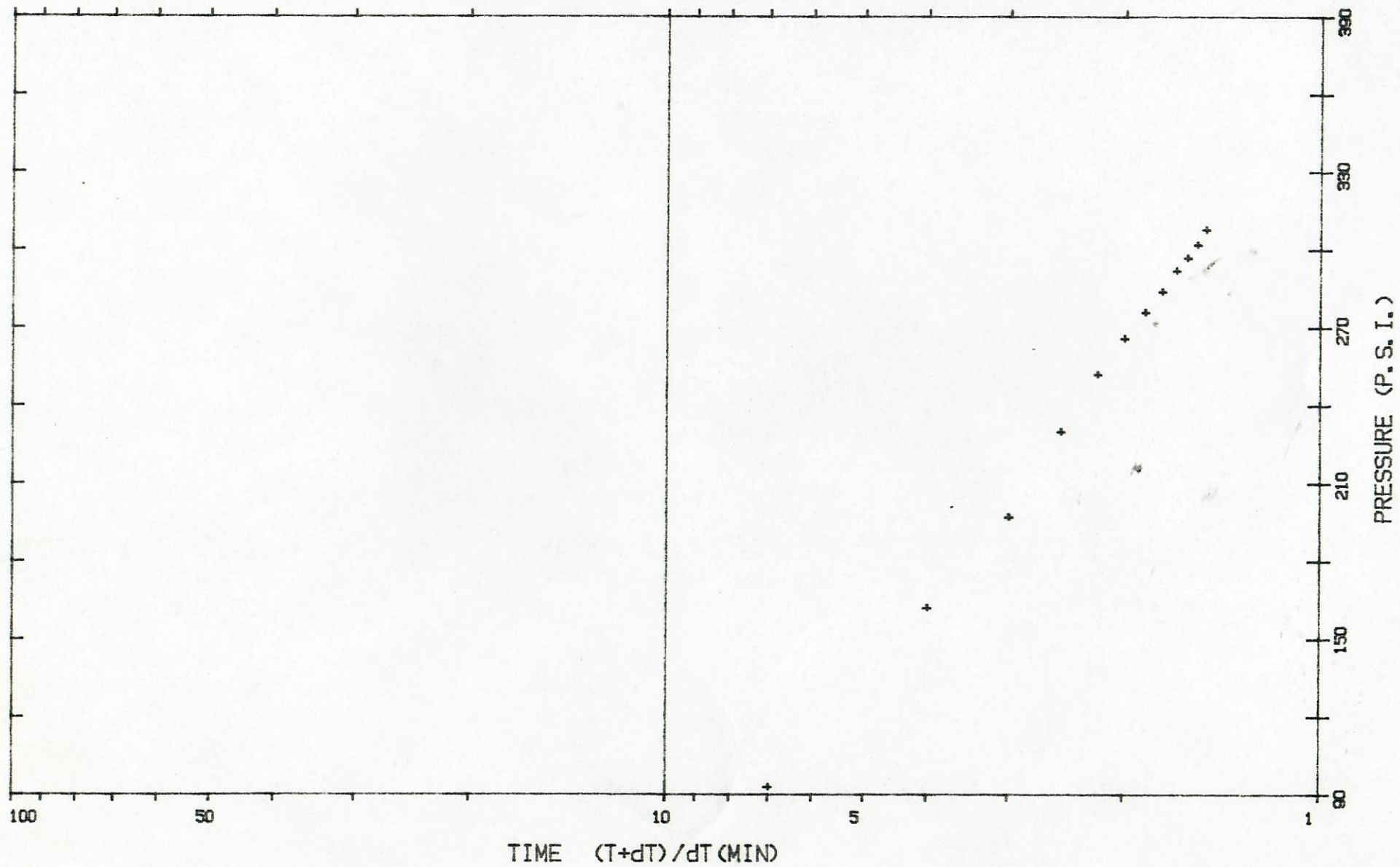
TIME-PRESSURE LISTING

CHART LABEL	COMMENTS	TIME MIN.	DELTA P PSI	PRESSURE (T+dt)/dt PSI	ABSCISSA PRESSURE SQUARED PSI ² /10 ⁶
A	INITIAL HYDROSTATIC	0.0		490.0	
B	START OF 1st FLOW	0.0		42.0	
C	END OF 1st FLOW	30.0		28.0	
	1st SHUTIN PERIOD	0.0	0.0	28.0	0.0000
		5.0	65.0	93.0	7.0000
		10.0	134.0	162.0	4.0000
		15.0	169.0	197.0	3.0000
		20.0	202.0	230.0	2.5000
		25.0	224.0	252.0	2.2000
		30.0	238.0	266.0	2.0000
		35.0	248.0	276.0	1.8571
		40.0	256.0	284.0	1.7500
		45.0	264.0	292.0	1.6667
		50.0	269.0	297.0	1.6000
		55.0	274.0	302.0	1.5455
D	END OF 1st SHUTIN	60.0	280.0	308.0	1.5000
E	START OF 2nd FLOW	0.0		35.0	
F	END OF 2nd FLOW	60.0		28.0	
	2nd SHUTIN PERIOD	0.0	0.0	28.0	0.0000
		5.0	70.0	98.0	19.0000
		10.0	118.0	146.0	10.0000
		15.0	155.0	183.0	7.0000
		20.0	177.0	205.0	5.5000
		25.0	192.0	220.0	4.6000
		30.0	206.0	234.0	4.0000
		35.0	216.0	244.0	3.5714
		40.0	224.0	252.0	3.2500
		45.0	232.0	260.0	3.0000
		50.0	238.0	266.0	2.8000
		55.0	243.0	271.0	2.6364
		60.0	248.0	276.0	2.5000
		70.0	256.0	284.0	2.2857
		80.0	262.0	290.0	2.1250
		90.0	267.0	295.0	2.0000
		100.0	272.0	300.0	1.9000
		110.0	276.0	304.0	1.8182
G	END OF 2nd SHUTIN	120.0	278.0	306.0	1.7500
K	FINAL HYDROSTATIC	0.0		507.0	

OPERATOR: TEXAS OIL & GAS
WELL NAME: EVANS #1
LOCATION: 14-16S-42W
FIRST SHUT-IN
RECORDER: 9857

DST #: 2

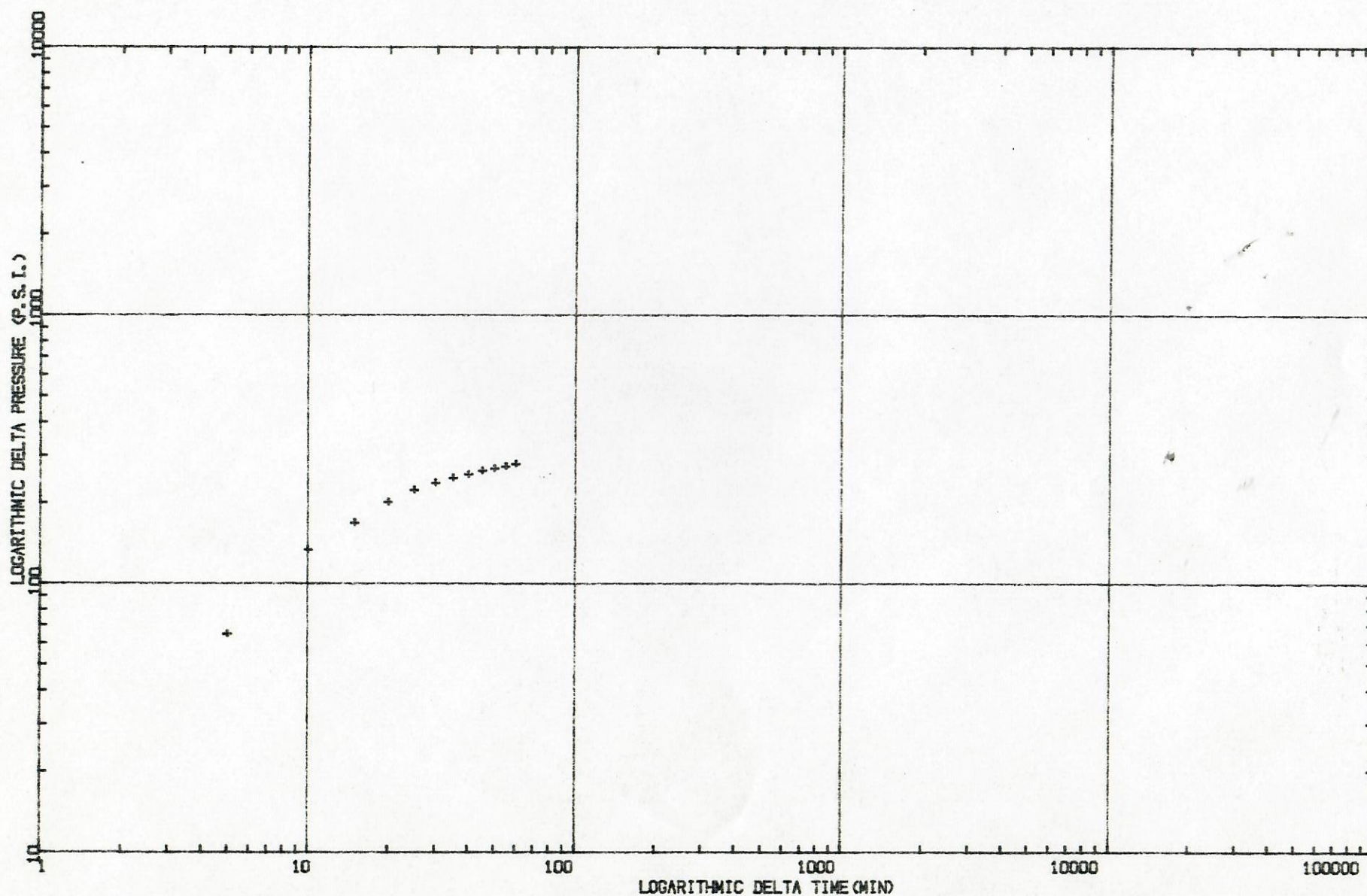
DEPTH: 982



OPERATOR: TEXAS OIL & GAS
WELL NAME: EVANS #1
LOCATION: 14-16S-42W
FIRST SHUT-IN
RECORDER: 9857

DST #: 2

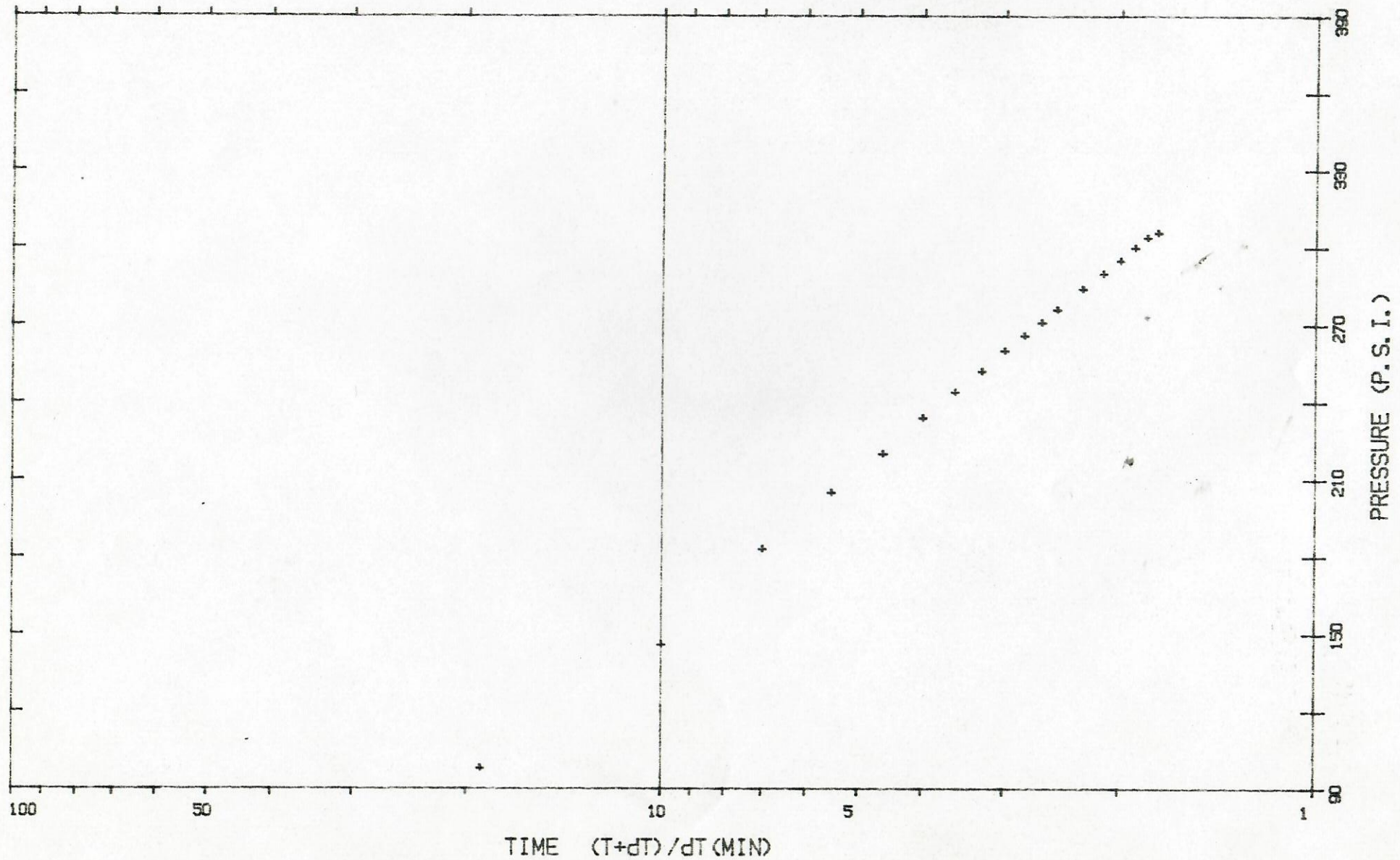
DEPTH: 982



OPERATOR: TEXAS OIL & GAS
WELL NAME: EVANS #1
LOCATION: 14-16S-42W
SECOND SHUT-IN
RECORDER: 9857

DST #: 2

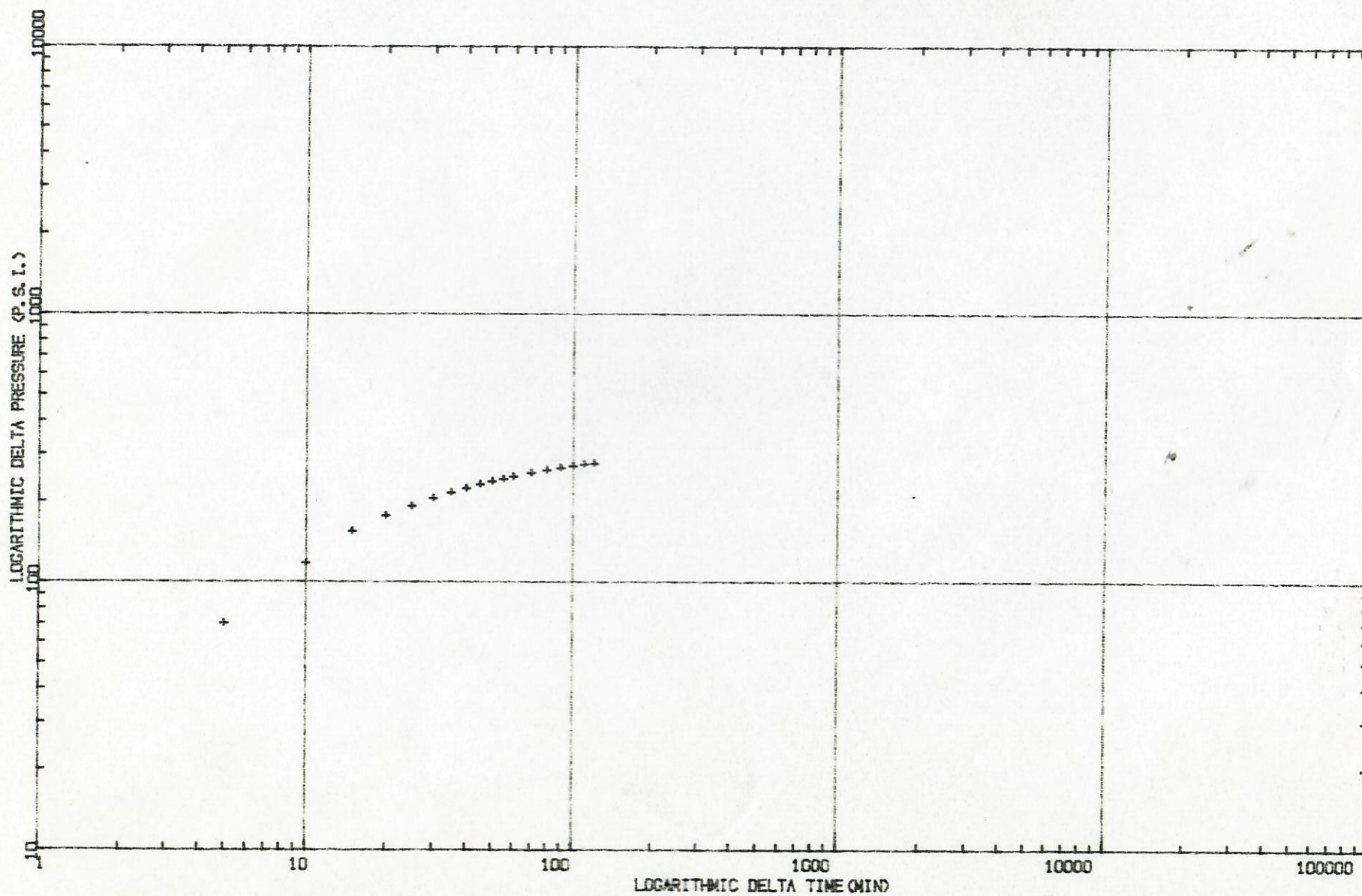
DEPTH: 982



OPERATOR: TEXAS OIL & GAS
WELL NAME: EVANS #1
LOCATION: 14-16S-42W
SECOND SHUT-IN
RECORDER: 9857

DST #: 2

DEPTH: 982



TEXAS OIL & GAS
DST#: 2
EVANS #1
978-996

Page 1

Location: 14-16S-42W
Test Type: INFLATE STRADDLE
Formation: CODELL

Recorder Number: 9857
Recorder Depth: 982 ft.

SAMPLE DATA

SAMPLE CHAMBER:

Capacity of sample chamber	2100	cc
Volume of sample.....	250	cc
Pressure in sampler.....	10	psig
Where sampler was drained...	on location	

Sampler contained:
Mud 2500 cc

RESISTIVITY DATA:

Bottom.....	9000 PPM CL
Sampler.....	11 000 PPM CL
Make-up Water...	12 000 PPM CL

PRESSURE RECORDER NUMBER : 9237

DEPTH : 982.00ft. LOCATION : INSIDE
TYPE : K-3 CAPACITY : 2600.00PSI

PRESSURE
PSI

A)Initial Hydro : 460.0
B)1st Flow Start: 59.0
C)1st Flow End : 26.0
D)END 1st Shutin: 297.0
E)2nd Flow Start: 38.0
F)2nd Flow End : 22.0
G)END 2nd Shutin: 290.0
K)Final Hydro. : 466.0



TEST TIMES(MIN)
1st FLOW : 30
SHUTIN: 60
2nd FLOW : 60
SHUTIN:120