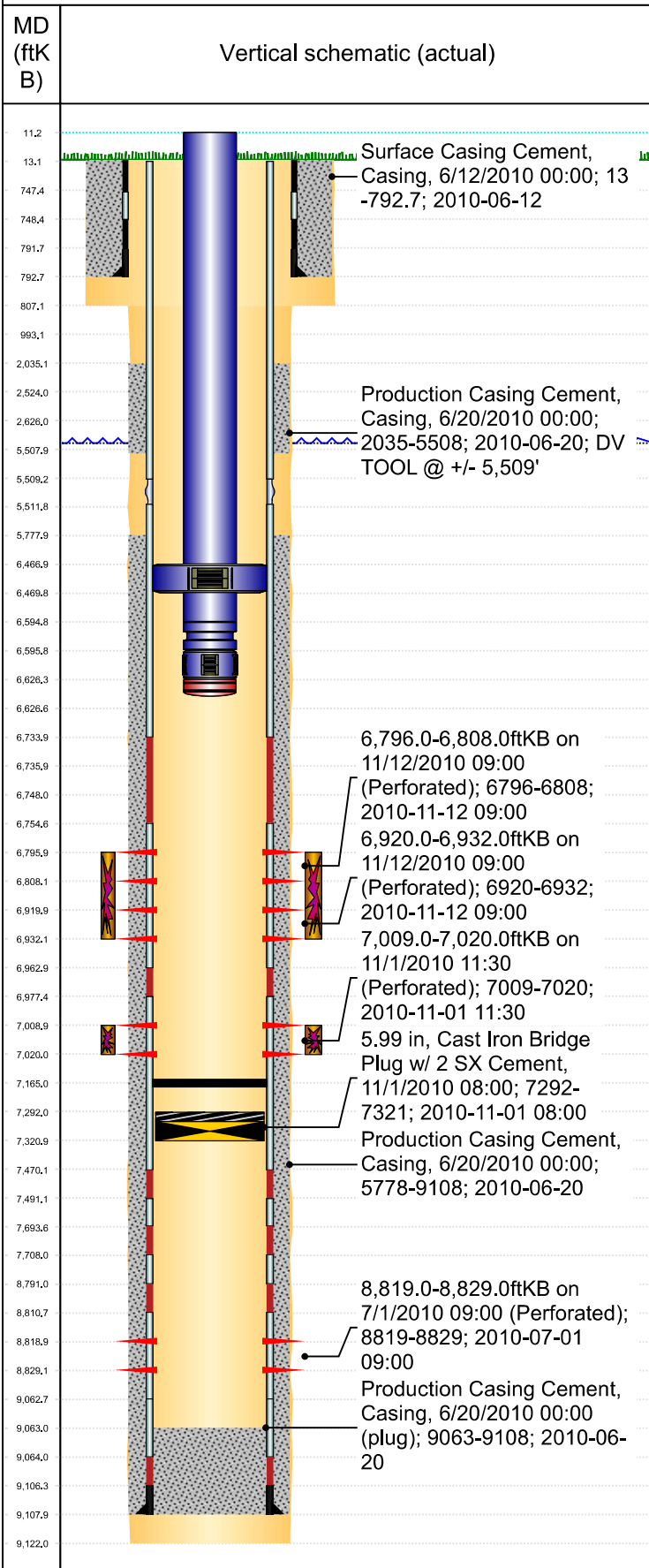




# P&A Wellbore For State

Well Name: DILLARD AB10-11

Original Hole [Land]



Well Header					
Surface UWI	Business Unit	Gov Auth Dist	Prod Tree Loc		
0512331488	Rockies		Land		
Orig. KB to Gnd (ft)	Original Spud Date	Abandon Date	Well Sub-Status	High...	
13.00	6/11/2010		PR	N	
Comment DV TOOL @ +/- 5,509'					

Surface Location (Congressional)								
Qtr 3	Qtr 4	Section	Twnshp	Twnsh...	Range	Rng E/...	Latitude (°)	Longitude (°)
NE	SW	10	7	N	64	W	40.58589179	-104.537935233
							5	

Wellbore Sections			
Section Des	Hole Size (in)	Top Depth (ftKB)	Btm Depth (ftKB)
SURFACE	13 1/2	13.0	807.0
PRODUCTION	8 3/4	807.0	9,122.0

Casing Strings						
Csg Des	Run Date	OD (in)	Wt/Len (lb/ft)	Grade	Top Depth (MD) (ftKB)	Set Depth (MD) (ftKB)
Surface	6/12/2010	9 5/8	36.00	J-55	13	792.7
Production Casing	6/20/2010	7	26.00	L-80	13.2	9108

Cement			
Des	Start Date	Top (ftKB)	Btm (ftKB)
SURFACE CASING CEMENT	6/12/2010	13.0	792.7
PRODUCTION CASING CEMENT	6/20/2010	2,035.0	5,508.0
PRODUCTION CASING CEMENT	6/20/2010	5,778.0	9,108.0

Zone Statuses					
Zone Name	Status Date	Status	Fluid Type	Job	Prod Method
NIOBRARA	2/17/2011	PR		DRILLING/COMPLETION - ORIGINAL, 6/10/2010...	
CODELL	2/17/2011	PR		DRILLING/COMPLETION - ORIGINAL, 6/10/2010...	
LYONS	2/17/2011	AB		DRILLING/COMPLETION - ORIGINAL, 6/10/2010...	

Perforation Data					
Linked Zone	Explosive Type	Entered Shot Total	Top (ftKB)	Btm (ftKB)	Date
NIOBRARA, Original Hole	A	24	6,796.0	6,808.0	11/12/2010
NIOBRARA, Original Hole	B	24	6,920.0	6,932.0	11/12/2010
CODELL, Original Hole		44	7,009.0	7,020.0	11/1/2010
LYONS, Original Hole		40	8,819.0	8,829.0	7/1/2010

Stim/Frac Stage			
Zone	Start Date	Top (ftKB)	Btm (ftKB)
NIOBRARA, Original Hole	11/15/2010	6,796.0	6,932.0
CODELL, Original Hole	11/8/2010	7,009.0	7,020.0

Other In Hole					
Run Date	Des	Make	OD (in)	Top (ftKB)	Btm (ftKB)
11/1/2010	Cast Iron Bridge Plug w/ 2 SX Cement		5.99	7,292.0	7,321.0

Logs			
Date	Type	Depth Top (MD) (ftKB)	Btm (ftKB)
6/18/2010	SPECTRAL DENSITY/Pe/DSN NEUTRON/SP/ARRAY COMPENSATED TRUE RESISTIVITY/6 ARM CALIPER	791	9,030.0
6/18/2010	SPECTRAL GAMMA RAY	791	9,030.0
6/29/2010	CBL/CCL/GR	1,716	9,050.0

Wellbore Plug Back Total Depths			
Date	Type	Com	PBTD (ftKB)
11/16/2010	FILL	CLEAN OUT 145' OF RAT HOLE	7,165
8/5/2013	FILL		7,165