



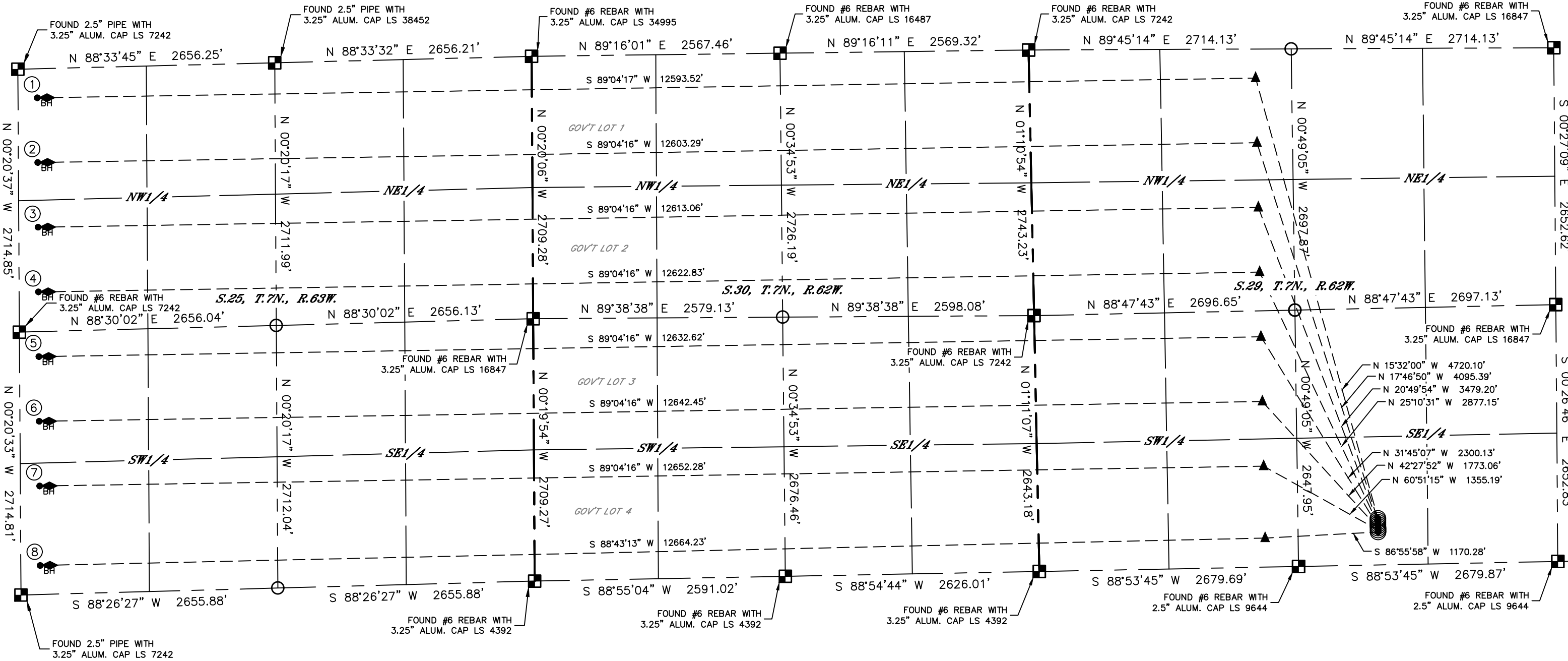
Lat40°, Inc. 6250 W. 10th Street, Unit 2, Greeley, CO 970-515-5294

DIRECTIONAL WELL PLAT

TRIGGERFISH PAD
BISON OIL & GAS IV

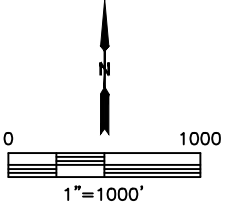
THIS MAP DOES NOT REPRESENT A BOUNDARY SURVEY

Q: SE/4
SECTION: 29
TOWNSHIP: 7N
RANGE: 62W
6TH. P.M.
WELD COUNTY, CO



- LEGEND
- = ALIQUOT MONUMENT AS DESCRIBED
 - = CALCULATED POSITION
 - = SURFACE HOLE LOCATION (SHL)
 - ▲ = ENTRY POINT LOCATION (EP)
 - ◆ = BOTTOM OF PRODUCTIVE ZONE (BPZ)
 - = BOTTOM HOLE LOCATION (BHL)
 - ⊙ = EXISTING WELL
 - ⊙ = ABANDONED WELL

#	WELL NAME	BHL FOOTAGE				BHL LAT°	BHL LONG°	BHL S-T-R
1	TRIGGERFISH 7-63 29-25-1	300	FNL	200	FWL	40.55142	-104.39313	25-7-63
2	TRIGGERFISH 7-63 29-25-2	968	FNL	200	FWL	40.54958	-104.39315	25-7-63
3	TRIGGERFISH 7-63 29-25-3	1636	FNL	200	FWL	40.54775	-104.39316	25-7-63
4	TRIGGERFISH 7-63 29-25-4	2304	FNL	200	FWL	40.54592	-104.39318	25-7-63
5	TRIGGERFISH 7-63 29-25-5	2456	FSL	200	FWL	40.54408	-104.39319	25-7-63
6	TRIGGERFISH 7-63 29-25-6	1788	FSL	200	FWL	40.54225	-104.39321	25-7-63
7	TRIGGERFISH 7-63 29-25-7	1120	FSL	200	FWL	40.54042	-104.39322	25-7-63
8	TRIGGERFISH 7-63 29-25-8	300	FSL	200	FWL	40.53817	-104.39324	25-7-63



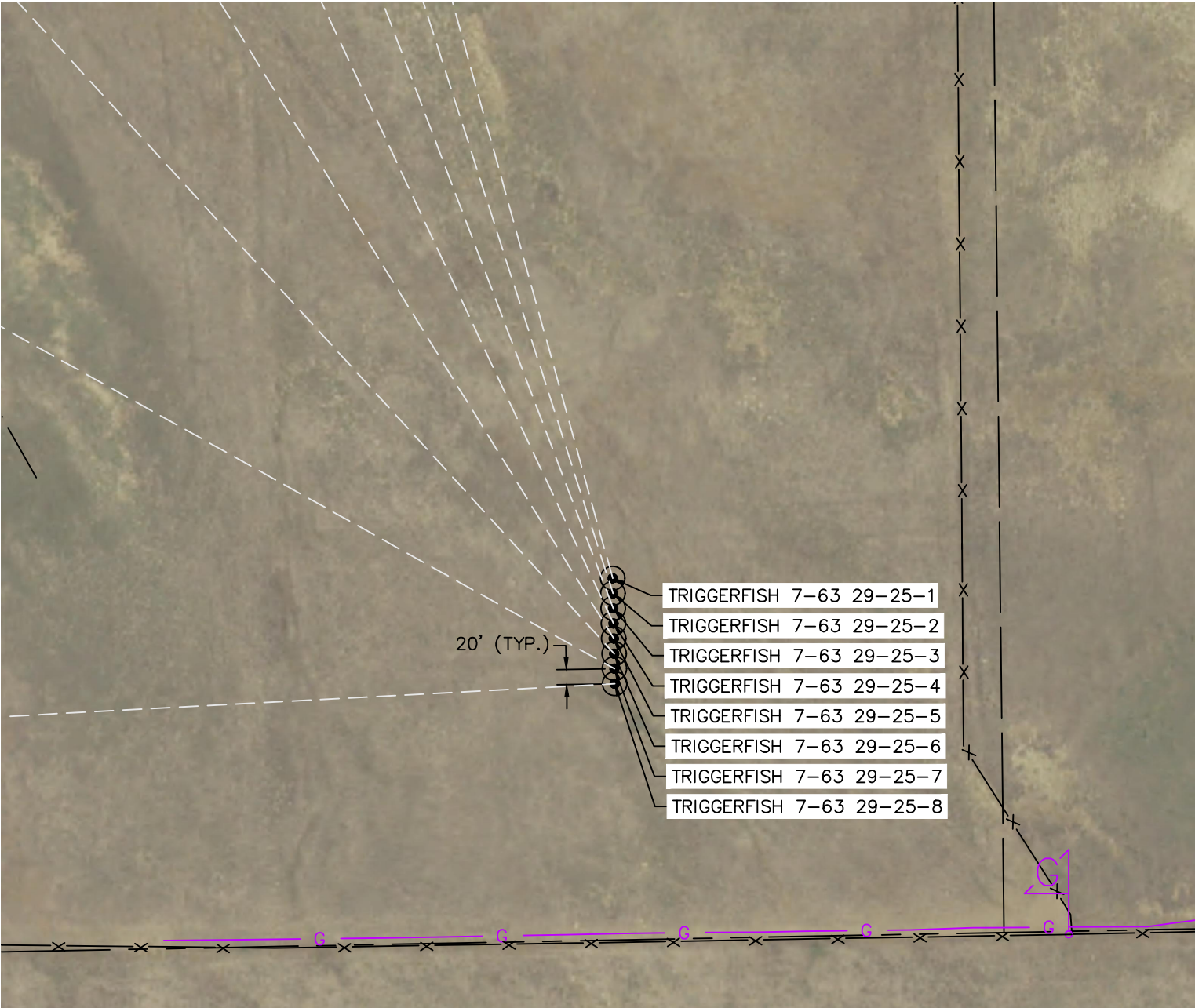


Lat40°, Inc. 6250 W. 10th Street, Unit 2, Greeley, CO 970-515-5294

DIRECTIONAL WELL PLAT

TRIGGERFISH PAD
BISON OIL & GAS IV

Q: SE/4
SECTION: 29
TOWNSHIP: 7N
RANGE: 62W
6TH. P.M.
WELD COUNTY, CO



WELL NAME	SHL FOOTAGE				SHL LAT °	SHL LONG °	SHL PDOP	SHL ELEV (FT.)	SHL 1/4/1/4	SHL S-T-R
TRIGGERFISH 7-63 29-25-1	480	FSL	1856	FEL	40.53901	-104.34349	0.9	4886	SWSE	29-7-62
TRIGGERFISH 7-63 29-25-2	460	FSL	1856	FEL	40.53896	-104.34349	0.9	4886	SWSE	29-7-62
TRIGGERFISH 7-63 29-25-3	440	FSL	1855	FEL	40.53890	-104.34349	0.9	4887	SWSE	29-7-62
TRIGGERFISH 7-63 29-25-4	420	FSL	1855	FEL	40.53885	-104.34349	0.9	4888	SWSE	29-7-62
TRIGGERFISH 7-63 29-25-5	400	FSL	1855	FEL	40.53879	-104.34349	0.9	4888	SWSE	29-7-62
TRIGGERFISH 7-63 29-25-6	380	FSL	1855	FEL	40.53874	-104.34349	1.0	4888	SWSE	29-7-62
TRIGGERFISH 7-63 29-25-7	360	FSL	1854	FEL	40.53868	-104.34349	0.9	4888	SWSE	29-7-62
TRIGGERFISH 7-63 29-25-8	340	FSL	1854	FEL	40.53863	-104.34349	1.1	4888	SWSE	29-7-62

