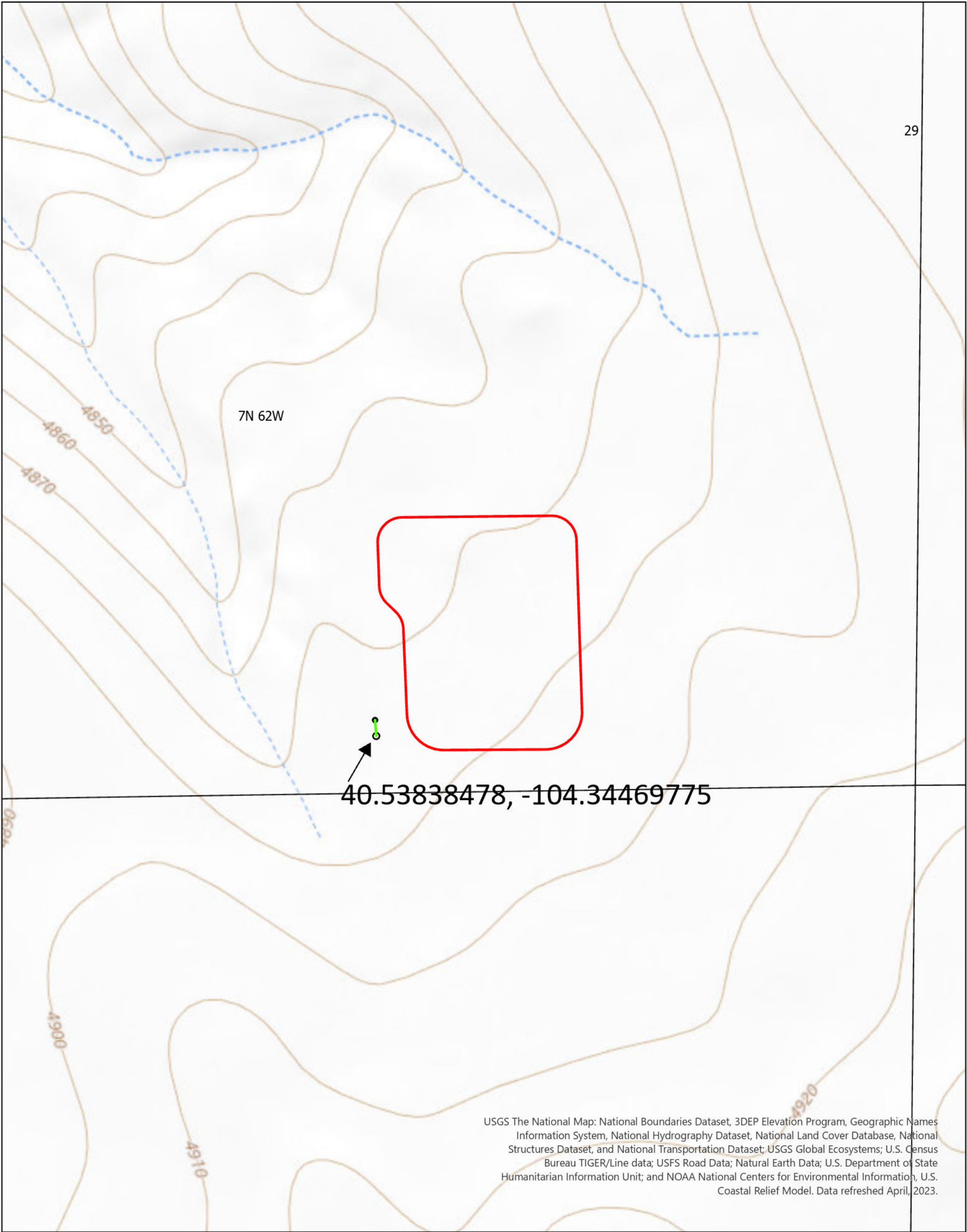


BISON IV OPERATING, LLC
TRIGGERFISH PAD
SEC 29, T7N, R62W, 6th P.M.
WELD COUNTY, COLORADO



USGS The National Map: National Boundaries Dataset, 3DEP Elevation Program, Geographic Names Information System, National Hydrography Dataset, National Land Cover Database, National Structures Dataset, and National Transportation Dataset; USGS Global Ecosystems; U.S. Census Bureau TIGER/Line data; USFS Road Data; Natural Earth Data; U.S. Department of State Humanitarian Information Unit; and NOAA National Centers for Environmental Information, U.S. Coastal Relief Model. Data refreshed April, 2023.

REFERENCE AREA
MAP
FIGURE 1

- Limit of Disturbance
- Reference Transect
- End
- Start

Projection: WGS 1984
Date: 9/25/2023
Drafted by: JLL



BISON IV OPERATING, LLC
TRIGGERFISH PAD
SEC 29, T7N, R62W, 6th P.M.
WELD COUNTY, COLORADO



REFERENCE AREA
MAP
FIGURE 2

- Limit of Disturbance
- Reference Transect
- End
- Start

Projection: WGS 1984
Date: 9/25/2023
Drafted by: JLL

