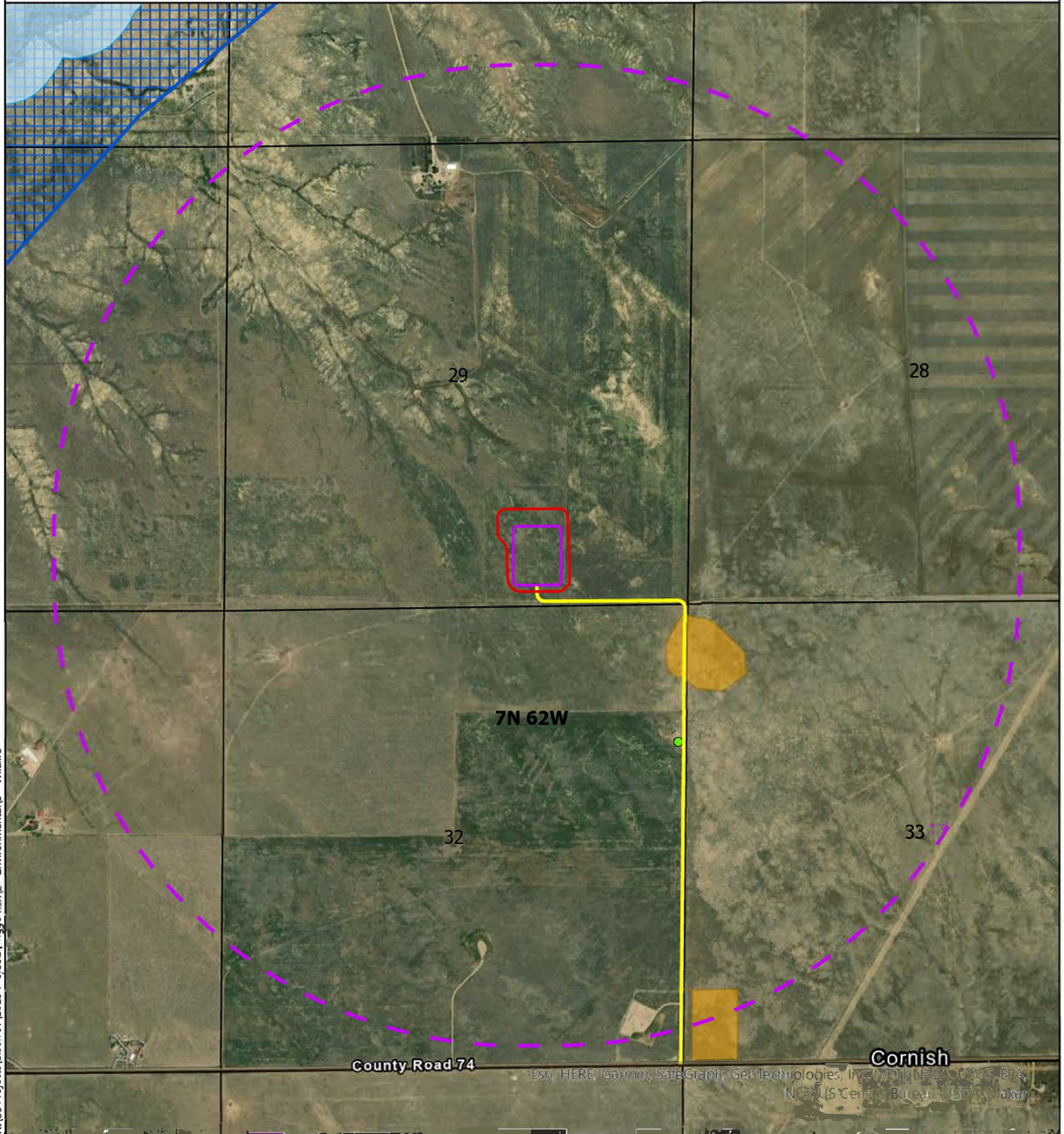


BISON IV OPERATING, LLC
 TRIGGERFISH PAD
 SEC 29, T7N, R62W, 6th P.M.
 WELD COUNTY, COLORADO



R:\00 Projects\Bison IV\2023 Projects\Triggerfish\2 - Environmental\5 - Wildlife

WILDLIFE HABITAT DRAWING

- | | |
|--|--|
| Working Pad Surface (WPS) | Burrowing Owl Habitat |
| Disturbance (Oil & Gas Location (OGL)) | Aquatic Native Species Conservation Waters HPH |
| One-mile radius from edge of WPS | Mule Deer Severe Winter Range HPH |
| Access Road | Mule Deer Winter Concentration Area HPH |
| Inactive Non-Eagle Raptor Nest | |

Projection: WGS 1984
 Date: 09/25/2023
 Drafted by: JLL



0 700 1,400
 Feet

1 inch equals 700 feet