



**RULE 304.E. SUBSTANTIALLY EQUIVALENT INFORMATION COVER SHEET**

**Sandy Bay Oil and Gas Development Plan**

**Barracuda Pad: SWSW Section 33, Township 7 North, Range 62 West**

**Form 2A Doc # 403550437**

**Weld County, Colorado**

The attached Site Safety and Emergency Action Plan is being submitted as a substantially equivalent document to the Emergency Response Plan required by ECMC Rule 424.a.

This document was developed for Weld County as part of the 1041WOGLA Application.

This document does not conform to ECMC rules or guidance in the following ways:

There are no Public Water System administrators applicable to be listed as a contact in Section 4.

---

This document should be accepted as substantially equivalent:

The Emergency Response Plan (submitted as pages 112-131 of the 1041 WOGLA Application) is being reviewed by both the Briggsdale Fire Protection District and Weld County OEM. Bison participates in annual training coordination with response agencies.

---

# **SITE SAFETY AND EMERGENCY ACTION PLAN**

## **Bison IV Operating, LLC**



**Bison IV Operating, LLC**

**518 17th Street**

**Suite 1800**

**Denver, Colorado 80202**

### **BARRACUDA PAD**

**SWSW Section 33, Township 7 North, Range 62 West**

**WELD COUNTY, COLORADO**

**Proposed Spud Date: 2nd Quarter 2024**

Contents

SECTION 1 – APPROVAL SIGNATURES..... 3

SECTION 2 – SITE ADDRESS AND DIRECTIONS..... 4

SECTION 3 – LIST OF EMERGENCY CONTACTS ..... 5

SECTION 4 – SITE SPECIFIC INFORMATION ..... 7

SECTION 5 – MAPS AND DRAWINGS..... 10

SECTION 6 – SPILL RESPONSE AND CLEAN-UP ..... 14

SECTION 7 – REPORTABLE QUANTITIES ..... 16

SECTION 8 – EVACUATION INFORMATION ..... 16

SECTION 9 – TRAINING AND EXERCISES..... 17

SECTION 10 – COORDINATION WITH FIRST RESPONDERS..... 17

SECTION 11 – Plan Review and Update Procedures ..... 18

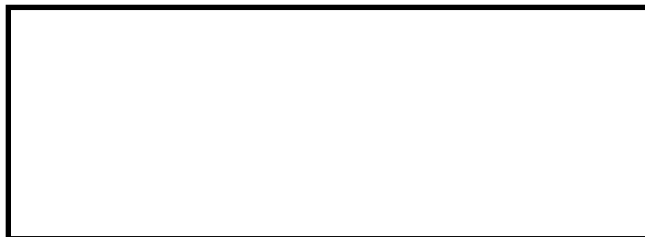
## **SECTION 1 – APPROVAL SIGNATURES**

**Instructions:** Company Representative to sign with concurrence review by local Fire District in alignment with ECMC FORM 2 A and Rule 602. J Emergency Response Plan, Guidance Plan Element 2.

Bison IV Operating, LLC			
Name	Signature	Title	Date
Katie Gillen		Director of Regulatory Affairs	6-1-23
Fire District			
Name	Signature	Title	Date

**Weld County Office of Emergency Management**

*Digitally Signed*



## **SECTION 2 – SITE ADDRESS AND DIRECTIONS**

**a) Directions:**

From the intersection of County Road 74 and County Road 79, continue west on County Road 74 for approximately 1.0 miles to a proposed access on the north side of the road, then continue north for approximately 0.1 miles and continue east for approximately 300 feet to the proposed well pad and production facility.

**b) Ingress and egress information:**

All ingress and egress routes for the Barracuda Pad will be clearly identified and kept clear from parked/staged vehicles at all times.

**c) Physical Address and GPS coordinates**

- **API#** – Pending ECMC Permit Approval
- **Legal Description** – SWSW Section 33, Township 7 North, Range 62 West
- **Address** - \* Address Pending (*Weld OEM will provide physical address for 911 dispatching*)
- **Town, CO, Zip** – Weld County, Colorado 80742
- **Lat/Long:** Lat: 40.52459°N      Long: -104.33515°W

**d) Emergency Evacuation/Muster Assembly point(s)**

For incidents where remaining in a particular area could pose a hazard to personnel onsite, such as a fire or hazardous material release, evacuation may be required to ensure the safety of onsite personnel. In the event of an emergency, site personnel will initially be evacuated to pre-designated muster assembly points.

- The Muster assembly points are identified on the Project Location Access Map and Muster Point exhibit as well as the site-specific TRP.
- The Muster assembly points will be identified during all site safety briefings for visitors, employees, and contract personnel.
- Once drilling and completion activities are finalized, the site will transition to its production phase and no unauthorized personnel will be allowed on location without first contacting a company representative.

### **SECTION 3 – LIST OF EMERGENCY CONTACTS**

**a) Energy Company**

<b>Name</b>	<b>Office Phone</b>	<b>Emergency/Cell</b>
Bison IV Operating, LLC 518 17 <sup>th</sup> Street Suite 1800 Denver, Colorado 80202	720-644-6997	303-481-2844
Field Office and Address: 46355 CR 95 Briggsdale, Colorado 80611	NA	505-402-6027
Bison IV Operating LLC EHS on-call emergency number	n/a	303-481-2844
EHS Supervisor – Katie Gillen	720-370-5737	303-358-9545

**b) Energy Company Community/Media Relations**

<b>Name</b>	<b>Office Phone</b>	<b>Cell Phone</b>
Katie Gillen	720-370-5737	303-358-9545

**c) First Responders (Fire, EMS, HazMat)**

<b>Name</b>	<b>Emergency Number</b>	<b>Non-Emergency Number</b>
<b>*All emergency notifications require notification to 911 first</b>		
Briggsdale Fire Protection District	911	970-656-3503
Weld County Sheriff	911	970-356-4015
Colorado State Highway Patrol	911	970-506-4999

**d) Local, State, and Federal Contacts**

<b>Name</b>	<b>Emergency Number</b>	<b>Non-Emergency Number</b>
Weld County Oil and Gas Energy Department	none	970-400-3580
Weld County Office of Emergency Management	911	970-304-6540
ECMC	none	303-894-2100

CDPHE	none	877-518-5608
Colorado Parks & Wildlife	none	303-291-7227
National Response Center	800-424-8802	none

e) **Medical Facilities** *(Nearest locations to site)*

Name	Office Phone
Northern Colorado Medical Center	970-352-4121
Medical Center of the Rockies	970-624-2500
Northern Colorado Medical Facility	970-810-4121

f) **Spill Response Organization** *(Contracted)*

Name	24/7 Emergency Number	Non-Emergency Number
Clean Harbors Environmental	800-645-8265	303-289-8031

g) **Loss of Well Control**

Name	24/7 Emergency Number	Non-Emergency Number
Briggsdale Fire Protection District	911	970-656-3503
Northern Colorado Medical Facility	970-810-4121	
Weld County Office of Emergency Management	911	970-304-6540

h) **Railroad Emergency Response** *(if applicable)*

Name	24/7 Emergency Number
Union Pacific Railroad	888-877-7267

i) **Mutual-Aid –**

All mutual-aid coordination within Weld County will be in accordance with the current Weld County Fire Chiefs Association Mutual-Aid Agreement. In addition, due to the size of Weld County and the large number of Fire Departments that make up the Weld County Fire Chiefs Association's, Mutual-Aid may be a mixture of full-time, combination, and volunteer FD resources responding to an incident at the Barracuda Pad at SWSW Section 33, Township 7 North, Range 62 West.

## **SECTION – 4 SITE SPECIFIC INFORMATION**

### **a) Site Description**

The Barracuda Pad at SWSW Section 33, Township 7 North, Range 62 West is a Bison IV Operating, LLC oil and gas production facility that will have fifteen (15) horizontal oil and gas wells along with six (6) 750-barrel crude oil storage tanks and four (4) 750 barrel produced water tanks located inside a lined secondary containment structure.

As part of the Weld County 1041WOGA permit process, the following sections of County Code address site layout, site drawings, and identify any sensitive areas and discuss any mitigation measures needed.

- Sec. 21-5-312 – Comprehensive Development Plans (CDPs)
- Section 21-5-320 – Application requirements for 1041WOGA Permit

### **b) Nearby Schools, High Occupancy Buildings, Waterways**

- Schools - None within 2500' of location.
- High Occupancy Buildings - None within 2500' of location.
- Waterways – An ephemeral drainage feature is approximately 600' south of the location.

### **c) Site Safety Requirements and General Safety Information**

The minimum personal protective equipment (PPE) to enter any Bison production location includes a hard hat, safety glasses, safety toe boots, fire resistant clothing (FRC), and a 4-gas monitor. All contractors and visitors are responsible for providing their employees with the appropriate training on and use of PPE while on Bison locations. In addition, all contract personnel entering a Bison location to perform work must understand and abide by Bison's contractor expectations relating to environmental, health, and safety requirements.

The primary hazards that any person must be aware of while on a Bison production location include, but are not limited to, the potential for release of hydrocarbon gases and/or liquids from production equipment/tanks, heavy truck and equipment traffic, loud noise, high pressures, and the potential for a flash fire. These hazards can vary depending on the work being performed.

- **SDS:** Depending on the operations taking place on location, chemicals stored on-site may vary. In accordance with 49 CFR 1910.1200, Safety Data Sheets (SDS) will be made available for site personnel performing work and for first responders in a centralized location onsite.



d) Wells and Tanks On-site

Item Description	Quantity
Horizontal oil and gas wells	15
750-bbl crude oil storage tank	6
750-bbl produced water	4

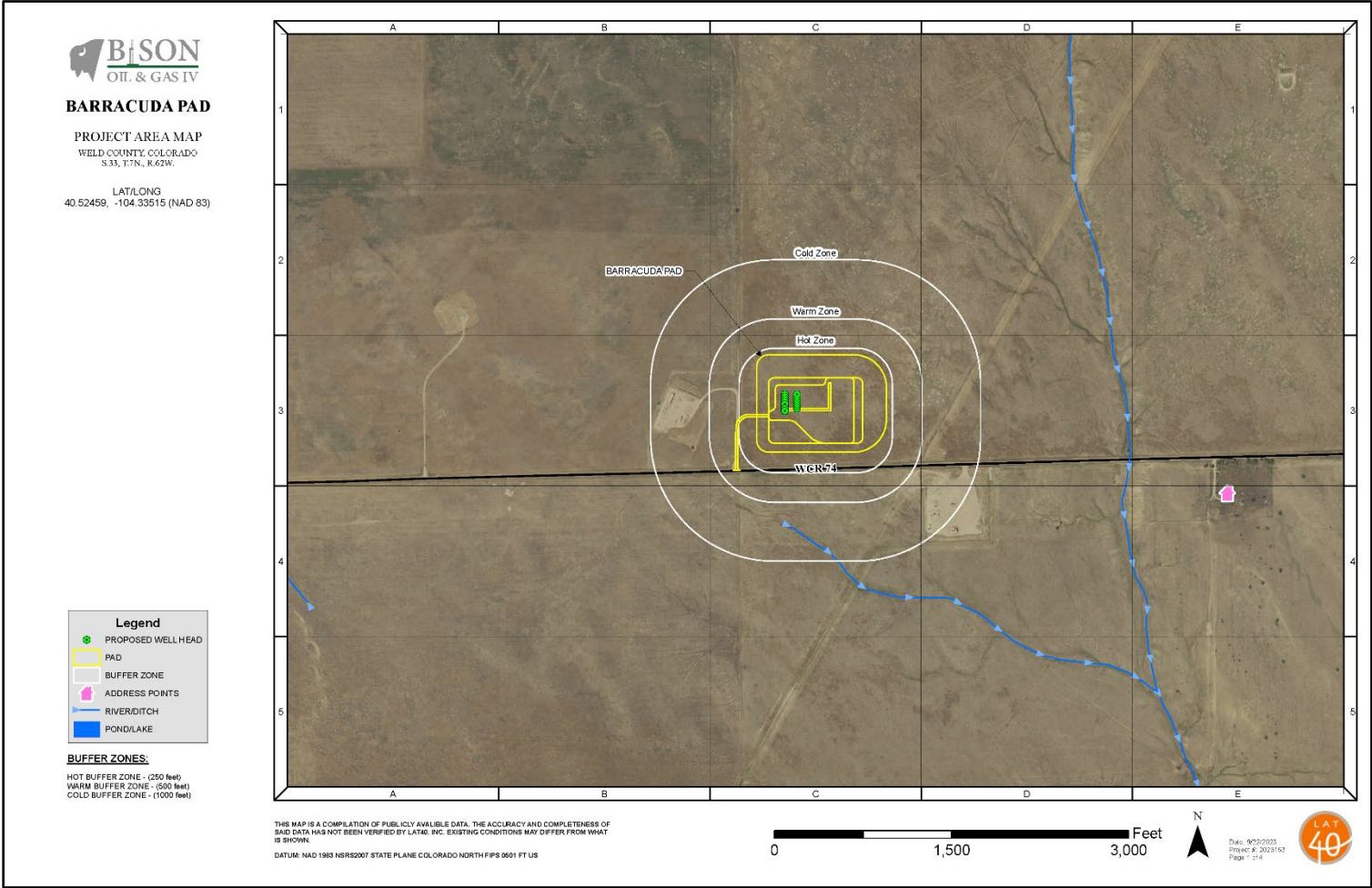
e) Chemicals stored on-site

Drilling Phase			
<u>Chemicals</u> (CAPITAL letters indicate specific Product Name. Lowercase letters indicate generic chemical)	<u>Package Size (Volume) &amp; Type</u>	<u>Quantity</u>	<u>Notes</u>
Calcium Chloride	50 lb sack	400-500	
D822 Base Fluid	19,000-gal tank	19,000 gals	
DMI WATE	Bulk silo	45 tons	
DMI WATE	100 lb sack	400 sacks	
Gilsonite	50 lb bag	80 sacks	
Lime	50 lb bag	300 sacks	
Magma Fiber	25 lb bag	45 sacks	
MULTI-SEAL	40 lb bag	160 sacks	
Oil Based Mud (OBM)	150-500 bbls tanks	1,800-2,200 bbl	
PREMA-VIS PLUS	50 lb bag	120 sacks	
Primary Emulsifier	55 gal drum	16-20 drums	
Secondary Emulsifier	55 gal drum	16-20 drums	
Low End Rheology Modifier	50 lb bag	80 bags	
Rig Wash	55 gal drum	4 drums	
Sawdust	40 lb bale	40 bales	
SOLTEX	50 lb bag	80 bags	
Walnut Shell M	50 lb bag	80 bags	
Completions/Hydraulic Fracturing Phase			
<u>Chemicals</u>	<u>Volume</u>	<u>Units/ Quantity</u>	<u>Notes</u>
Hydrochloric Acid	16,000-gal ATL Bulk	1	Used during first stages
HCR Synthetic Acid	4,500-gal Transport	2	
Sodium Bicarbonate	200-300 lbs	1	Acid neutralizer
Calcium Chloride (Brine)	500-bbl Capacity	1	Winter ops only
Friction Reducer (FR)	6,400-gal Capacity	2	ISO Containers
Biocide	6,400-gal Capacity	1	Biocide treatment trailer
Sodium Chlorite	2,000-gal Capacity	1	
Sodium Hypochlorite	2,000-gal Capacity	1	Biocide treatment trailer
Produced Water	500-bbl	4	
Production Phase			
<u>Chemicals</u>	<u>Volume</u>	<u>Units/ Quantity</u>	<u>Notes</u>

emulsion breaker	500-gal tank	1	
corrosion inhibitor	550-gal tank	1	
methanol	330-gal tank	3	

**SECTION 5 – MAPS AND DRAWINGS**

**Project Area Map**



# Project Location Access Map and Muster Point

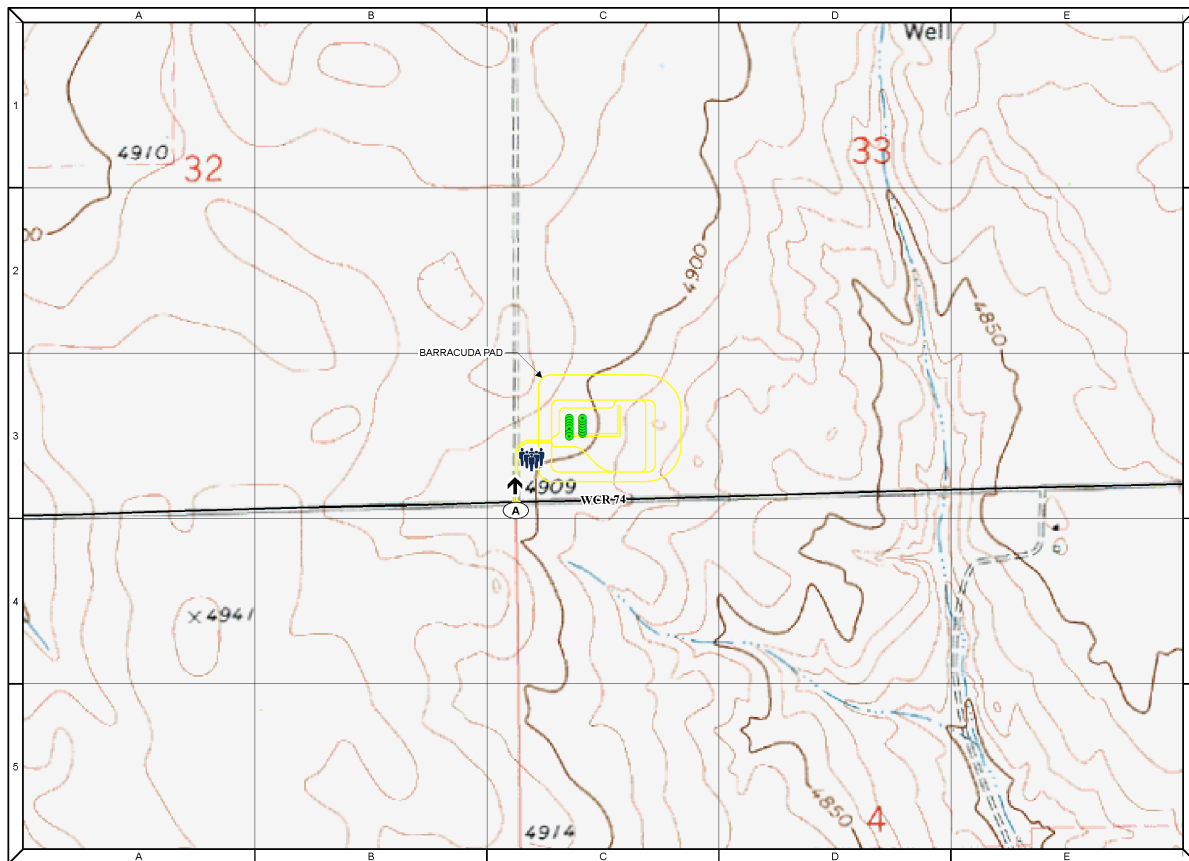


## BARRACUDA PAD

### PROJECT LOCATION ACCESS MAP AND MUSTER POINT

WELD COUNTY, COLORADO  
S.33, T.7N, R.62W.

LAT/LONG  
40.52459, -104.33515 (NAD 83)



#### Legend

- PROPOSED WELL HEAD
- PAD
- SITE ACCESS
- PRIMARY MUSTER POINT
- PRIMARY INGRESS/EGRESS

THIS MAP IS A COMPILATION OF PUBLICLY AVAILABLE DATA. THE ACCURACY AND COMPLETENESS OF SAID DATA HAS NOT BEEN VERIFIED BY LAT40, INC. EXISTING CONDITIONS MAY DIFFER FROM WHAT IS SHOWN.

DATUM: NAD 1983 NRS2007 STATE PLANE COLORADO NORTH FIPS 8501 FT US

0 1,500 3,000 Feet



Date: 10/6/2023  
Project #: 2023153  
Page: 2 of 4

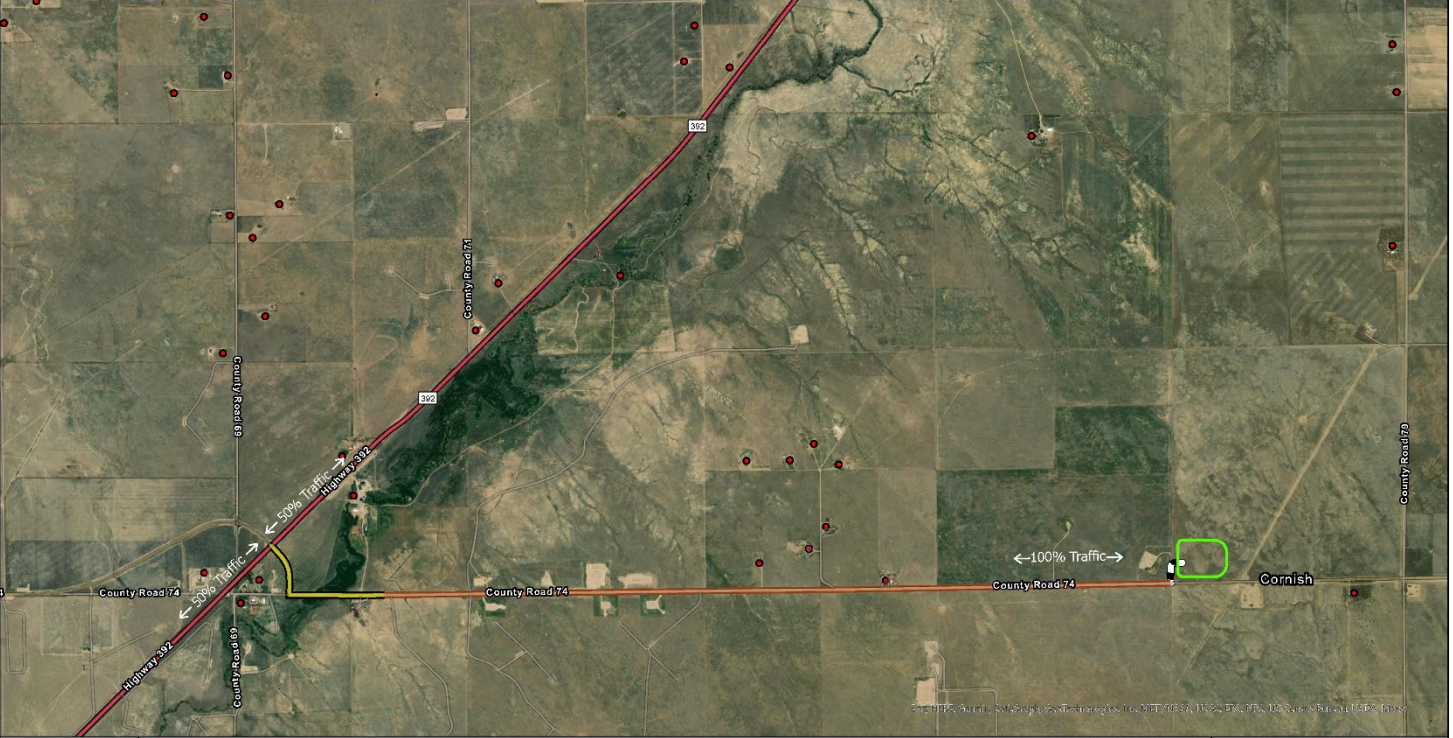


# Haul Route Map

BISON IV OPERATING, LLC  
BARRACUDA PAD  
SECTION 33, T7N R62W, 6th P.M.  
WELD COUNTY, COLORADO

Prepared For:  
**BISON**  
IV OPERATING

Prepared By:  
**RPG**  
RESOURCES



## HAUL ROUTE MAP

- Proposed Oil & Gas Location
- Unpaved Road (County)
- State Highway
- Proposed Access Road
- Paved Road (County)
- Address Point

There are no school facilities, future school facilities, or child care centers in which the haul route passes.

Projection: WGS 1984  
Date: 10/19/2023  
Drafted by: RDG

0 1,500 3,000 Feet

1 inch equals 2,000 feet



## 2,500' Buffer Area Map



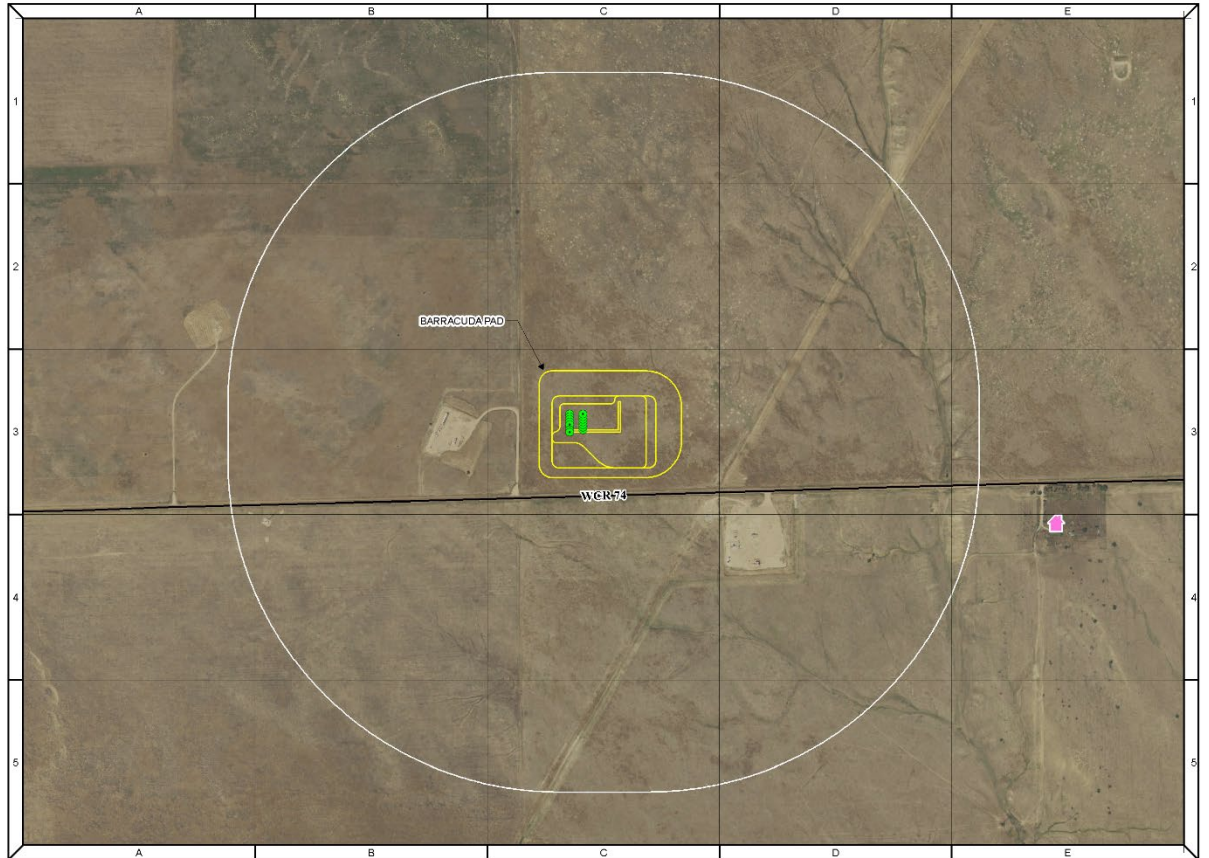
### BARRACUDA PAD

2500' BUFFER AREA MAP  
WELD COUNTY, COLORADO  
S.33, T.7N, R.62W.

LAT/LONG  
40.52459, -104.33515 (NAD 83)

**Legend**

- PROPOSED WELL HEAD
- PAD
- 2500' BUFFER
- ADDRESS POINTS
- SCHOOLS
- SUBDIVISION



THIS MAP IS A COMPILATION OF PUBLICLY AVAILABLE DATA. THE ACCURACY AND COMPLETENESS OF SAID DATA HAS NOT BEEN VERIFIED BY LAT40, INC. EXISTING CONDITIONS MAY DIFFER FROM WHAT IS SHOWN.

DATUM: NAD 1983 NRS2007 STATE PLANE COLORADO NORTH FIPS 9501 FT US

0 1,500 3,000 Feet



Date: 9/22/2023  
Project #: 2023152  
Page #: 1/4



## **SECTION 6 – SPILL RESPONSE AND CLEAN-UP**

### **a) Spill Response**

There are multiple types of hydrocarbons which can be released/spilled during oil and gas production and exploration. The most commonly released hydrocarbons are unrefined products such as crude oil and produced water. Refined petroleum products such as diesel, gasoline, and motor oil spills are less common, but still equally important to mitigate. If a spill is found reportable, it will be mitigated in accordance with Colorado Energy and Carbon Management Commission (ECMC) and Colorado Department of Public Health and Environment (CDPHE) guidelines.

Once a release has been identified, it will be immediately stopped and contained if possible and is safe to do so. When containing a spill; pig blankets, snakes, absorbent materials, or earthen berms will be constructed around the release to keep material from spreading. These materials will be provided by Bison IV Operating, LLC and the contract company and kept on-site. Diligent efforts will be made to minimize contact with live vegetation or open water if a release is outside of secondary containment structures.

In the event of a large incident requiring outside assistance, Bison IV Operating, LLC has contracted with Silvers Jacobson Crisis Management & PR Strategies, LLC. Silvers Jacobson Crisis Management & PR Strategies, LLC possesses a working knowledge of oil and gas operations, emergency response and Incident Command. Once notified Silvers Jacobson Crisis Management & PR Strategies, LLC personnel can be on location within 12 hours.

### **b) Spill Reporting**

The person reporting a spill may be required to supply spill assessment information to provide as a complete understanding of the incident as possible to local, state, or federal agencies if applicable. Some initial spill response actions and information that may be reported are presented below:

- A spill/release will be reported to the ECMC if released material is property of Bison Operating LLC and meets the ECMC reporting thresholds (see below), an example would be crude oil released from a separator or produced water from a water vault.
- A spill/release will be reported to the Weld County LEPC if released material is property of Bison IV Operating, LLC and meets the ECMC reporting thresholds (see below) mandated by Section 304 of the Emergency Planning and Community Right-To-Know Act (EPCRA).
- A spill/release will be reported to the CDPHE if released material is in the custody of a third party for spills meeting CDPHE reporting thresholds or are of any size that impact or threaten to impact waters of the state, a residence or occupied structure, livestock or public byway.

Spills are reportable to the ECMC and/or to Weld County LEPC in the following circumstances:

- A. the spill or release impacts or threatens to impact any waters of the state, a residence or occupied structure, livestock or a public byway;
- B. a spill or release in which 1 barrel or more is released outside of berms or other secondary containment;
- C. or any spill or release of 5 barrels or more. If the spill impacts or threatens to impact waters of the state (which include surface water, ground water and dry gullies or storm sewers leading to surface water), it must also be reported immediately to CDPHE (25-8-601 CRS). Petroleum releases of 25 gallons or more.

Once a spill is determined reportable, there is a 24-hour deadline to make initial notification to the ECMC/LEPC or CDPHE depending on the product ownership. Spills/releases in the custody of Bison IV

Operating, LLC will be reported by a Company Representative. Spills/releases in the custody of a third party will be reported by the responsible company's EHS Department to the appropriate agency and to Bison IV Operating, LLC.

These regulatory guidelines will be strictly followed by Bison and any contractors operating under Bison IV Operating, LLC guidance during activities at the Barracuda Pad at SWSW Section 33, Township 7 North, Range 62 West.



## **SECTION 7 – REPORTABLE QUANTITIES**

### **a) Reportable Quantities**

Mandated by Section 312 of the Emergency Planning and Community Right-To-Know Act (EPCRA) – also known as SARA Title III – the Tier II form captures information about the types, quantities, and locations of hazardous chemicals at a given facility. The form also lists contact information for the facility's designated emergency point-of-contact.

- Any facility that is required to maintain MSDs (or SDSs) under the Occupational Safety and Health Administration (OSHA) 49 CFR 1910.1200 regulations for hazardous chemicals stored or used in the workplace.
- Facilities with chemicals in quantities that equal or exceed the lists of lists thresholds must report.
- Propane, benzene, and methane are on the list of chemicals with reportable thresholds and are known to be in crude oil. In addition, diesel may be stored on oil and gas sites during construction and development.

#### **a. Reportable Requirements**

If your facility will meet the requirements under 40 CFR Part 370, you must submit your Tier II report to the State of Colorado every year before March 1<sup>st</sup>.

These regulatory requirements will be strictly followed by Bison and any contractors operating under Bison during all activities at the Barracuda Pad at SWSW Section 33, Township 7 North, Range 62 West.

## **SECTION 8 – EVACUATION INFORMATION**

### **a. Evacuation Plan Procedures (public)**

The procedure to be used in alerting the public in the event of an incident that could pose a threat to life or property will be arranged and coordinated with first responders and Weld County Emergency Management.

In the event of an actual emergency, the following steps will be immediately taken:

1. The Bison IV Operating, LLC representative will immediately notify first responders (911), to warn the public of a potential chemical exposure.
2. First responders may conduct door-to-door evacuation notices in addition to reverse 911 and utilizing the Integrated Public Alert and Warning System (IPAWS).
3. The Energy Company responsible for employees and contract personnel will monitor essential and non-essential personnel traffic on or near the incident site.
4. General:
  - a. The area included within the radius of exposure is considered to be the zone with the maximum potential hazard, per the Emergency Response Guide (ERG). When it is determined that conditions exist which create an additional area (beyond the initial zone of maximum potential hazard) vulnerable to possible hazard, public areas in the additional hazardous area will be evacuated.
  - b. In the event of an incident, after the public areas have been evacuated and traffic stopped, it is expected that local civil authorities will have arrived and within a few hours will have assumed direction of and control of the public, including all public areas.
  - c. Bison IV Operating, LLC will fully cooperate with these authorities and will exert every effort by careful advice to such authorities to prevent panic or rumors.

Bison IV Operating, LLC will dispatch appropriate personnel to the disaster site as soon as possible. The company's personnel will cooperate with and provide such information to civil authorities as they might require.

## **SECTION – 9 TRAINING AND EXERCISES**

The National Incident Management System (NIMS) guides all levels of government, non-governmental organizations and the private sector to work together to prevent, protect against, mitigate, respond to, and recover from incidents.

NIMS provides stakeholders across the whole community with the shared vocabulary, systems and processes to successfully deliver the capabilities described in the National Preparedness System. NIMS defines operational systems that guide how personnel work together during incidents.

Bison IV Operating, LLC plays a vital role in the Incident Management System. Bison IV Operating, LLC has a significant impact on local, regional, and national economic recovery, and is part of the whole community and essential to the function of the Community Lifelines.

To maximize Bison IV Operating, LLC's impact and willingness to participate in incident operations, Bison IV Operating, LLC should coordinate and integrate with first responders into a Unified Command (UC)—including planning, training, and preparedness exercises. In addition, it is also recommended all Bison IV Operating, LLC employees who will respond to an incident have training in ICS 100, ICS 200, and ICS 700 at a minimum, for company and agency emergency response interoperability to manage a response.

Exercises are an important component to testing an organization's response readiness, training and familiarity with various emergency response scenarios, participation and engagement with local and or state agencies, and to develop lessons learned to improve emergency response capabilities. Per ECMC guidance number 16, a proposed schedule and type of exercises are provided below:

- Bison will conduct annual emergency response exercises and coordinate periodic tabletop drills with first responders and local government officials, and onsite emergency response exercises with local first responders every three years.

## **SECTION – 10 COORDINATION WITH FIRST RESPONDERS**

- a) Bison IV Operating, LLC will communicate drill spud, completion operations, and Production Turn-In-Line dates to the Weld County Office of Emergency Management for coordination/communication with local first responders. These start dates will be provided a minimum of 7 business days prior to commencement or change in oil and gas development operations.
- b) In the event of an emergency requiring First Responders, Unified Command will be established between the Bison appointed company man on location and First Responders present. The Unified Command post will be established based on conditions present at the time of the incident.
- c) Bison IV Operating, LLC's EHS representative and first responders identified in this Emergency Action Plan and Tactical Response Plan have reviewed both documents and have discussed coordination efforts in the event of an emergency situation requiring first responder assistance.
- d) **Industry Mutual-Aid:** Energy companies operating in Weld County are encouraged to be members of the Colorado Preparedness Response Network (CPRN), to support mutual-aid collaboration between industry and public emergency response organizations to achieve a coordinated and effective response to an all-hazards event.

## **SECTION – 11 Plan Review and Update Procedures**

- a) Multi-year plan review and update:  
Bison IV Operating, LLC will update this plan or incorporate this location into an area-wide plan and update that plan every five (5) years or after a change in personnel, operations or ownership.
- b) Post incident plan review and update:  
Bison IV Operating, LLC will update this plan after a spill/release in order to evaluate and record the plan's effectiveness.



## BARRACUDA PAD

WELD COUNTY, COLORADO  
S.33, T.7N., R.62W.

Location Address:

LAT/LONG  
40.52459, -104.33515 (NAD 83)

All Emergencies will be reported  
through 911

### Notifications

1. Bison Oil & Gas IV:  
720-644-6997
2. Weld County Public Safety Communications:  
911, 970-350-9600 (non Emergency)
3. Briggsdale Fire Protection District:  
911, 970-656-3503 (non Emergency)
4. Weld County OEM:  
970-304-6540

### Critical Receptors

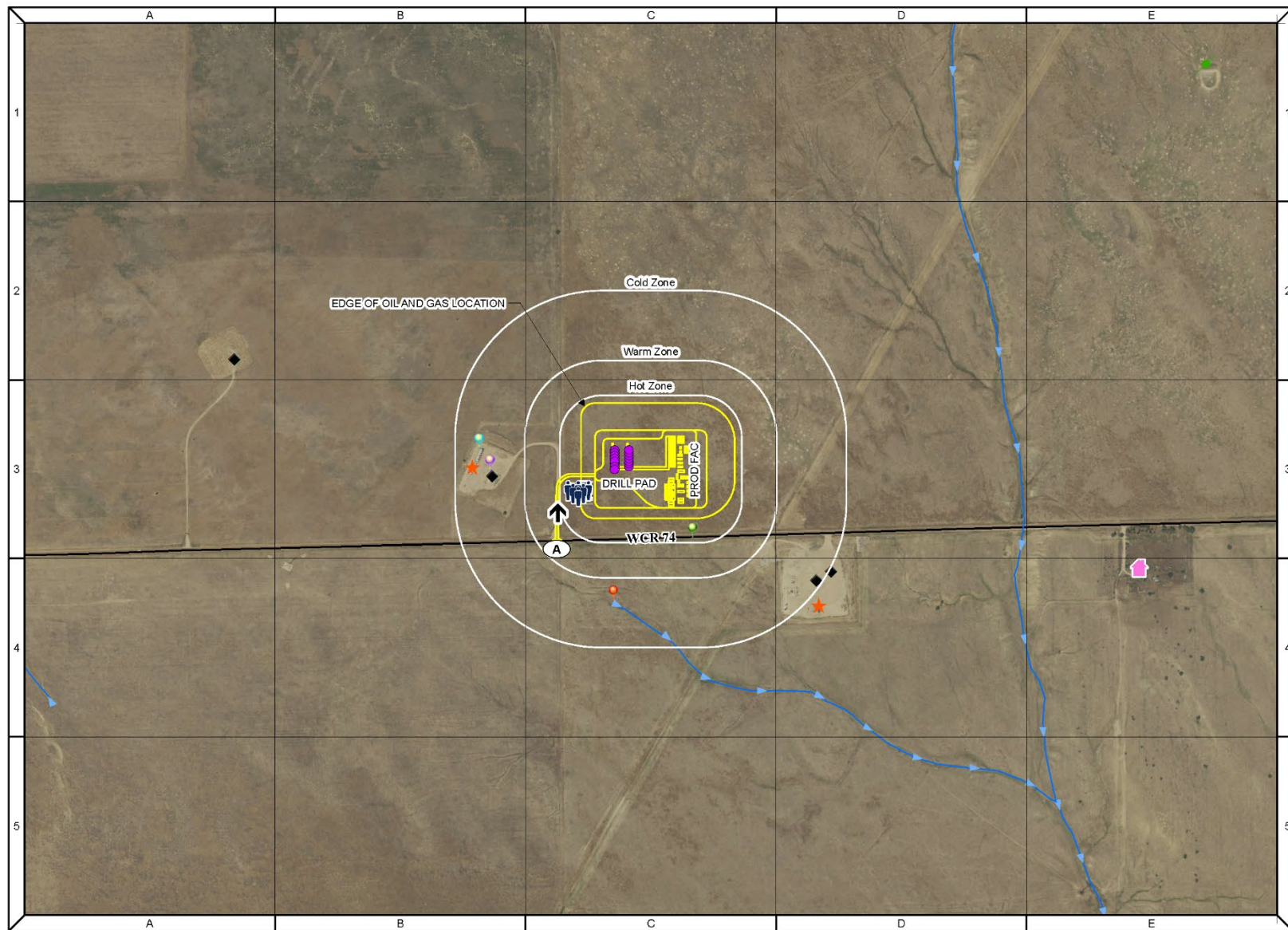
- Surrounding Existing Well
- Surrounding Low Area
- Surrounding Public Road
- Surrounding Tank Battery / Combustor

Note: This Tactical Response Card is a reference tool and is intended to provide guidance during an actual event or exercise. Placement of resources may need to be adjusted according to environmental variables. It is the responsibility of emergency response personnel to be trained in response and to be able to make adjustments to the card as needed.

ERG Zone (500 meters) Not Shown

### Legend

- |                          |                          |
|--------------------------|--------------------------|
| SITE ACCESS              | PARK                     |
| PAD                      | SCHOOL                   |
| BUFFER ZONE              | POLICE STATION           |
| PROPOSED WELL HEAD       | FIRE STATION             |
| PRIMARY MUSTER POINT     | WATER TREATMENT FACILITY |
| PRIMARY INGRESS/EGRESS   | RIVER/DITCH              |
| ADDRESS POINTS           | RAILROAD                 |
| PLUGGED & ABANDONED WELL | POND/LAKE                |
| EXISTING WELL            | SUBDIVISION              |
| TANK BATTERY/ COMBUSTOR  |                          |
| WIND SOCK                |                          |
| FIRE HYDRANT             |                          |



### BUFFER ZONES:

HOT BUFFER ZONE - (250 feet)  
WARM BUFFER ZONE - (500 feet)  
COLD BUFFER ZONE - (1000 feet)

THIS MAP IS A COMPILATION OF PUBLICLY AVAILABLE DATA. THE ACCURACY AND COMPLETENESS OF SAID DATA HAS NOT BEEN VERIFIED BY LAT40, INC. EXISTING CONDITIONS MAY DIFFER FROM WHAT IS SHOWN.

DATUM: NAD 1983 NRS2007 STATE PLANE COLORADO NORTH FIPS 0601 FT US

0 500 1,000 Feet



Date: 10/6/2023  
Project #: 2023153  
Sheet 1 of 2



## FIRE DEPARTMENT RESPONSE GUIDELINES

### COMMAND

- Establish initial command post near the oil & gas location entrance.
- Position should provide a clear view of the entire scene.
- Advise responding units and resources to stage near location entrance.
- Locate operator lease sign on location (located at the entrance / site access).
- If industry personnel are not on location, call the 24-Hour Emergency Contact number located on the sign.
- Establish unified command with operator on-site liaison.
- Develop incident action plan with the operator to mitigate incident.
- Strategy – Always defensive unless a life safety need is identified!**

### INCIDENT STABILIZATION

- Implement Hazardous Materials response protocols.
- All personnel operating in hazard zones should be in appropriate PPE, to include a personal mobile air monitoring device.
- Establish Hot, Warm, Cold Zones, and ERG zones.
- Exposure Concerns – Equipment, nearby structures, neighborhoods, roadways, etc.
- Monitor weather conditions, especially wind direction.
- Air monitoring for vulnerable areas and locations around incident.
- Conduct evacuations of citizens, bystanders, and resources at risk.
- Identify and address any water supply and/or foam requirements necessary to mitigate the incident.

### SPECIAL CONSIDERATIONS

- If evacuations are needed, coordinate with Weld County OEM before ordering an evacuation to establish evacuation routes, shelters, shelter in-place, and utilize IPAWS (reverse 9-1-1).
- Request mutual aid apparatus and equipment asap to minimize operational delays.
- Consider and address any potential impacts to critical receptors identified near the location.
- Consider requesting a HazMat Team if needed to assist with mitigation.
- Consider requiring a fire investigation for any fire and/or explosion.
- Keep the public and stakeholders informed of response activities.
- Notify FAA if Air Traffic restrictions are needed (requested through OEM)

## INDUSTRY RESPONSE OBJECTIVES

Ensure safety of the public, first responders, employees, and contractors. Minimize impact to the environment and local community. The following response objectives checklist shall be followed:

### SAFETY – PROTECT LIFE

- Evaluate and account for all personnel
- Isolate all potential ignition sources
- Establish site control (safe perimeter and evacuation routes)
- Contact emergency services as needed (911, Fire, LEPC)
- Identify hazard(s) of emitted material (obtain SDS)
- Implement air monitoring around impacted area
- Continually assess site hazards/risks

### RESPONSE – INCIDENT STABILIZATION

- Notify internal personnel and agencies
- Assign on-site liaison to the incident commander
- Establish Hot, Warm, Cold Zones, and ERG Zone
- Identify and establish staging area to support response operations
- Activate emergency shutdown procedures (ESD)
- Activate response action contractors for equipment and manpower as needed (e.g, Well Control, spill/HazMat clean-up, etc.)

### ENVIRONMENTAL – PROTECT THE ENVIRONMENT

- Identify, prioritize, and protect environmentally sensitive areas
- Verify if water has been impacted
- Implement waste handling, disposal and decontamination procedures as needed
- Contain and recover spilled materials
- Notify appropriate agencies

### SPECIAL CONSIDERATIONS

- Keep the public and stakeholders informed of response activities



## FACILITY INFORMATION

### Well Pad Liquid Storage:

- (6) Crude Oil Storage Tanks (BBL) – 750 BBLs/ea
- (4) Produced Water Tanks (BBL) – 750 BBLs/ea
- \*1 Barrel (BBL) = 42 Gallons

### Specific Facility Hazardous Conditions (chemicals on site)

Drilling	CALCIUM CHLORIDE	50lb Sack x 400-500
	D822 BASE FLUID	19,000gal Tank
	DMI WATE	Bulk Silo – 45 Tons
	DMI WATE	100lb Sack x 400
	GILSONITE	50lb Bag x 80
	LIME	50lb Bag x 300
	MAGMA FIBER	25lb Bag x 45
	MULTI-SEAL	40lb Bag x 160
	OIL BASED MUD	150-500bbl Tanks x 1,800-2,220 bbl
	PREMA – VIS PLUS	50lb Bag x 120
	PRIMARY EMULSIFIER	55gal Drum x 16-20
	SECONDARY EMULSIFIER	55gal Drum x 16-20
	LOW END RHEOLOGY MODIFIER	50lb Bag x 80
	RIG WASH	55gal Drum x 4
Completions /Hydraulic Fracturing Phase	SAWDUST	40lb Bale x 40
	SOLTEX	50lb Bag x 80
	WALNUT SHELL M	50lb Bag x 80
	HYDROCHLORIC ACID	16,000gal ATL Bulk
	HCR SYNTHETIC ACID	4,500gal Transport x 2
	SODIUM BICARBONATE	200-300lbs
	CALCIUM CHLORIDE	500bbl Capacity
	FRICTION REDUCER (FR)	6,400gal Capacity x 2
Production	BIOCIDE	6,400gal Capacity
	SODIUM CHLORITE	2,000gal Capacity
	SODIUM HYPOCHLORITE	2,000gal Capacity
	PRODUCED WATER	500bbl x 4
	EMULSION BREAKER	500gal Tank
	CORROSION INHIBITOR	550gal Tank
	METHANOL	330gal Tank x 3

### Is Water Supply Available on Location?

FIRE HYDRANTS
WATER STORAGE TANKS
{4} Produced Water Tanks (BBL) – 750 BBL