

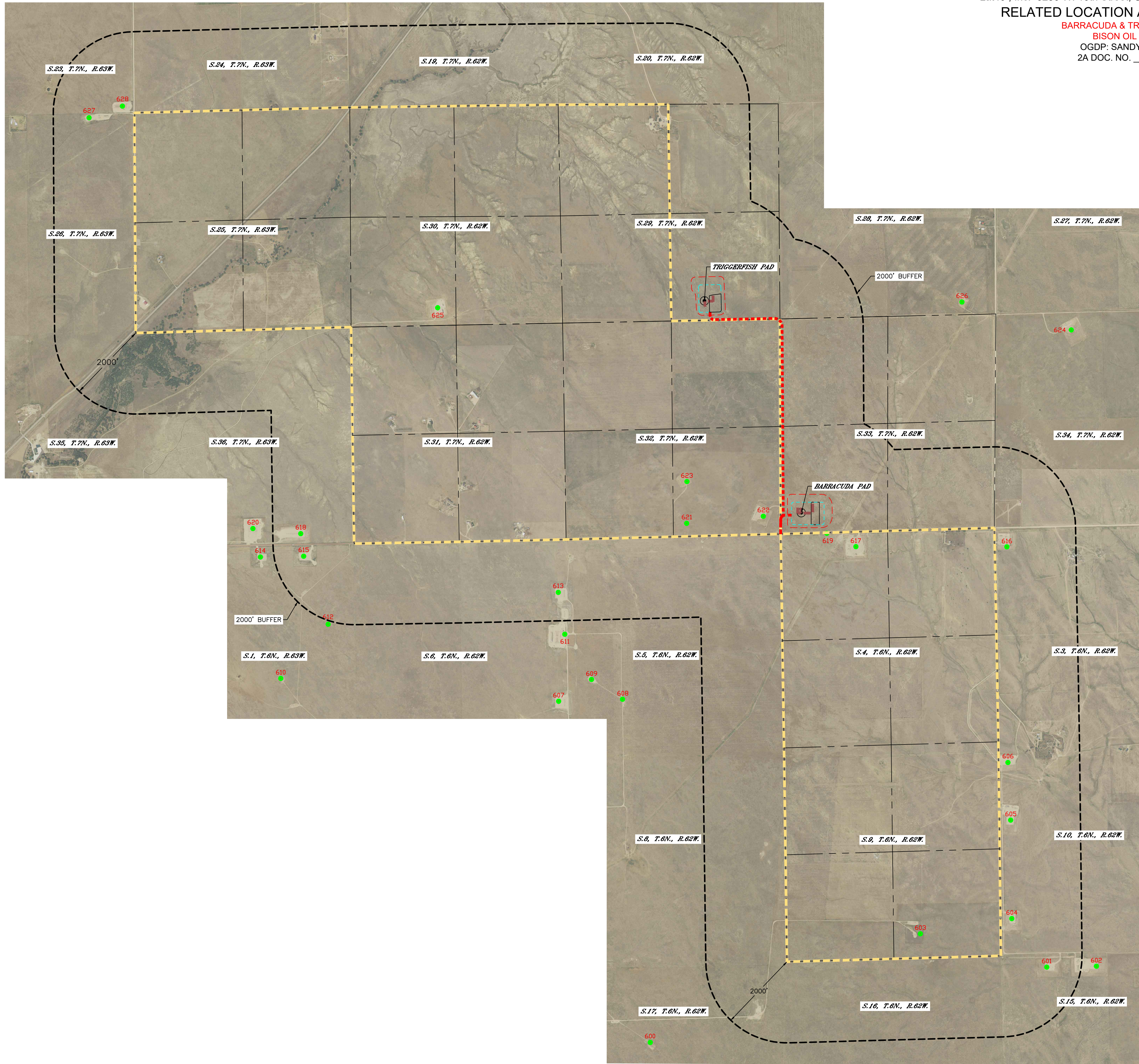
RELATED LOCATION AND FLOWLINE MAP

BARRACUDA & TRIGGERFISH PAD

BISON OIL & GAS IV

OGDP: SANDY BAY OGDP

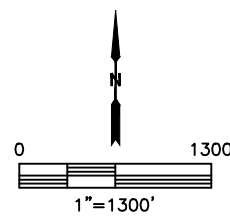
2A DOC. NO. _____



ID	LOCATION ID	LOCATION NAME	OPERATOR
600	310775	DEGENHART USX AE-66N62W 17SENW	NOBLE ENERGY INC
601	438482	Will 6-62-15-22 NWNW	HIGHPOINT OPERATING CORPORATION
602	438766	Will 6-62-15-22 NENW	HIGHPOINT OPERATING CORPORATION
603	421582	Degenhart 6-62-9-1H	NOBLE ENERGY INC
604	448779	Will Trust 6-62-10-11 SWSW	HIGHPOINT OPERATING CORPORATION
605	448780	Will Trust 6-62-10-11 CW2	HIGHPOINT OPERATING CORPORATION
606	427470	Dutch Lake 8-10H	HIGHPOINT OPERATING CORPORATION
607	428890	WELLS RANCH AE 06-64-1HN	NOBLE ENERGY INC
608	422462	Wells Ranch AEDS-12 TANK	NOBLE ENERGY INC
609	422345	Wells Ranch AEDS-12	NOBLE ENERGY INC
610	302160	KEHN USX AA-66N63W 1NWSE	NOBLE ENERGY INC
611	428479	WELLS RANCH AE SEC 6 ECONODE	NOBLE ENERGY INC
612	302162	KEHN USX AA-66N63W 1SENE	NOBLE ENERGY INC
613	428881	Wells Ranch AE 06-68-1HN	NOBLE ENERGY INC
614	438848	Crow Creek AAD1-756 PAD	NOBLE ENERGY INC
615	438842	Crow Creek AAD1-734 PAD	NOBLE ENERGY INC
616	422197	Dutch Lake 03-03H	HIGHPOINT OPERATING CORPORATION
617	440714	Whitetail F-4 PAD	BONANZA CREEK ENERGY OPERATING COMPANY LLC
618	433025	CROW CREEK STATE AD 31-79HN	NOBLE ENERGY INC
619	442281	Whitetail F-4 MELVT PAD	BONANZA CREEK ENERGY OPERATING COMPANY LLC
620	432762	CROW CREEK STATE AC36-76HN PROD FACILITY	NOBLE ENERGY INC
621	440295	Crow Valley CPF 0-32 PAD	BONANZA CREEK ENERGY OPERATING COMPANY LLC
622	422674	Crow Valley A4-32 PAD	BONANZA CREEK ENERGY OPERATING COMPANY LLC
623	422253	Crow Valley 7-62-32 1M	BONANZA CREEK ENERGY OPERATING COMPANY LLC
624	428002	Crow Valley 7-62-34 2H	BONANZA CREEK ENERGY OPERATING COMPANY LLC
625	428129	Crow Valley 7-62-30 2H	BONANZA CREEK ENERGY OPERATING COMPANY LLC
626	428121	Crow Valley 7-62-28 4H	BONANZA CREEK ENERGY OPERATING COMPANY LLC
627	426494	Carmichael NE-26 Pad	PDC ENERGY INC
628	432537	Wahlert AC23-69HN Tank	NOBLE ENERGY INC

LEGEND	
	LOCATION ACTIVE
	PROPOSED REFERENCE POINT
	TEMPORARY ACCESS ROAD
	ACCESS ROAD
	DSU BOUNDARY
	PROPOSED FLOWLINE CORRIDOR
	OIL AND GAS TAKEAWAY
	2000' BUFFER
	PROPOSED PRODUCTION FACILITY
	WORKING PAD SURFACE
	OIL AND GAS LOCATION

NOTE:
1. NO OFFSITE FLOWLINE PROPOSED.
2. THIRD PARTY CUSTODY TRANSFER OCCURS AT LACT FOR OIL.
3. THIRD PARTY CUSTODY TRANSFER OCCURS AT METER FOR GAS.
THIS MAP IS A COMPILATION OF PUBLICLY AVAILABLE DATA. THE ACCURACY AND COMPLETENESS OF SAID DATA HAD NOT BEEN VERIFIED BY LAT40, INC. EXISTING CONDITIONS MAY DIFFER FROM WHAT IS SHOWN.
DATA SOURCE: ECOM



SHEET SIZE: 24X36



Lat40°, Inc.
Professional Land Surveyors
6250 W. 10th Street, Unit 2
Greeley, CO 80634
O: 970-515-5294

DATE: 1/30/2024	FILE NAME: 2023153WELL	DRAWN BY: LD	CHECKED BY: BR	SCALE: AS SHOWN	PROJECT #: 2023153
REVISIONS:	DATE:	RELATED LOCATION FLOWLINE MAP FOR SANDY BAY OGDP BARRACUDA & TRIGGERFISH PADS BISON OIL & GAS IV			1 SHEET 1 OF 1