



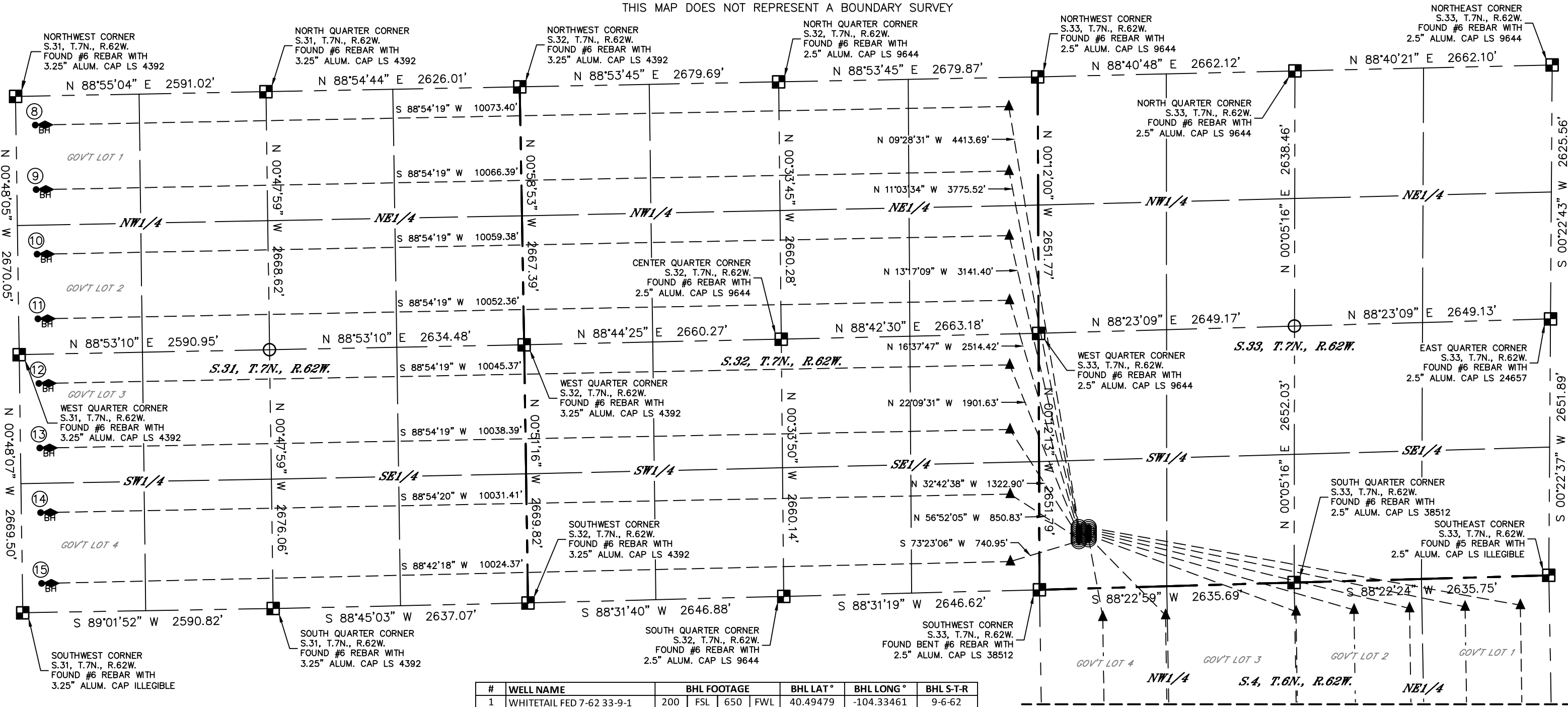
Lat40°, Inc. 6250 W. 10th Street, Unit 2, Greeley, CO 970-515-5294

DIRECTIONAL WELL PLAT

BARRACUDA PAD
BISON OIL & GAS IV

Q: SW/4
SECTION: 33
TOWNSHIP: 7N
RANGE: 62W
6TH. P.M.
WELD COUNTY, CO

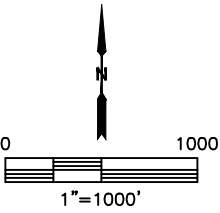
THIS MAP DOES NOT REPRESENT A BOUNDARY SURVEY



- LEGEND
- = ALIQUOT MONUMENT AS DESCRIBED
 - = CALCULATED POSITION
 - = SURFACE HOLE LOCATION (SHL)
 - ▲ = ENTRY POINT LOCATION (EP)
 - ◆ = BOTTOM OF PRODUCTIVE ZONE (BPZ)
 - _{BH} = BOTTOM HOLE LOCATION (BHL)
 - ⊙ = EXISTING WELL
 - ⊙ = ABANDONED WELL

#	WELL NAME	BHL FOOTAGE			BHL LAT°	BHL LONG °	BHL S-T-R	
1	WHITETAIL FED 7-62 33-9-1	200	FSL	650	FWL	40.49479	-104.33461	9-6-62
2	WHITETAIL FED 7-62 33-9-2	200	FSL	1300	FWL	40.49482	-104.33228	9-6-62
3	WHITETAIL FED 7-62 33-9-3	200	FSL	2627	FEL	40.49487	-104.32742	9-6-62
4	WHITETAIL FED 7-62 33-9-4	0	FNL	2037	FEL	40.50883	-104.32528	9-6-62
5	WHITETAIL FED 7-62 33-9-5	200	FSL	1452	FEL	40.49492	-104.32320	9-6-62
6	WHITETAIL FED 7-62 33-9-6	200	FSL	877	FEL	40.49494	-104.32113	9-6-62
7	WHITETAIL FED 7-62 33-9-7	200	FSL	300	FEL	40.49497	-104.31906	9-6-62
8	BARRACUDA 7-62 33-31-1	300	FNL	200	FWL	40.53673	-104.37414	31-7-62
9	BARRACUDA 7-62 33-31-2	968	FNL	200	FWL	40.53489	-104.37414	31-7-62
10	BARRACUDA 7-62 33-31-3	1636	FNL	200	FWL	40.53306	-104.37414	31-7-62
11	BARRACUDA 7-62 33-31-4	2304	FNL	200	FWL	40.53123	-104.37414	31-7-62
12	BARRACUDA 7-62 33-31-5	2368	FSL	200	FWL	40.52940	-104.37413	31-7-62
13	BARRACUDA 7-62 33-31-6	1700	FSL	200	FWL	40.52756	-104.37413	31-7-62
14	BARRACUDA 7-62 33-31-7	1032	FSL	200	FWL	40.52573	-104.37413	31-7-62
15	BARRACUDA 7-62 33-31-8	300	FSL	200	FWL	40.52372	-104.37412	31-7-62

SHEET 2 OF 3



SHEET 1 OF 3

DATE: 10/11/2023
PROJECT#: 2023153



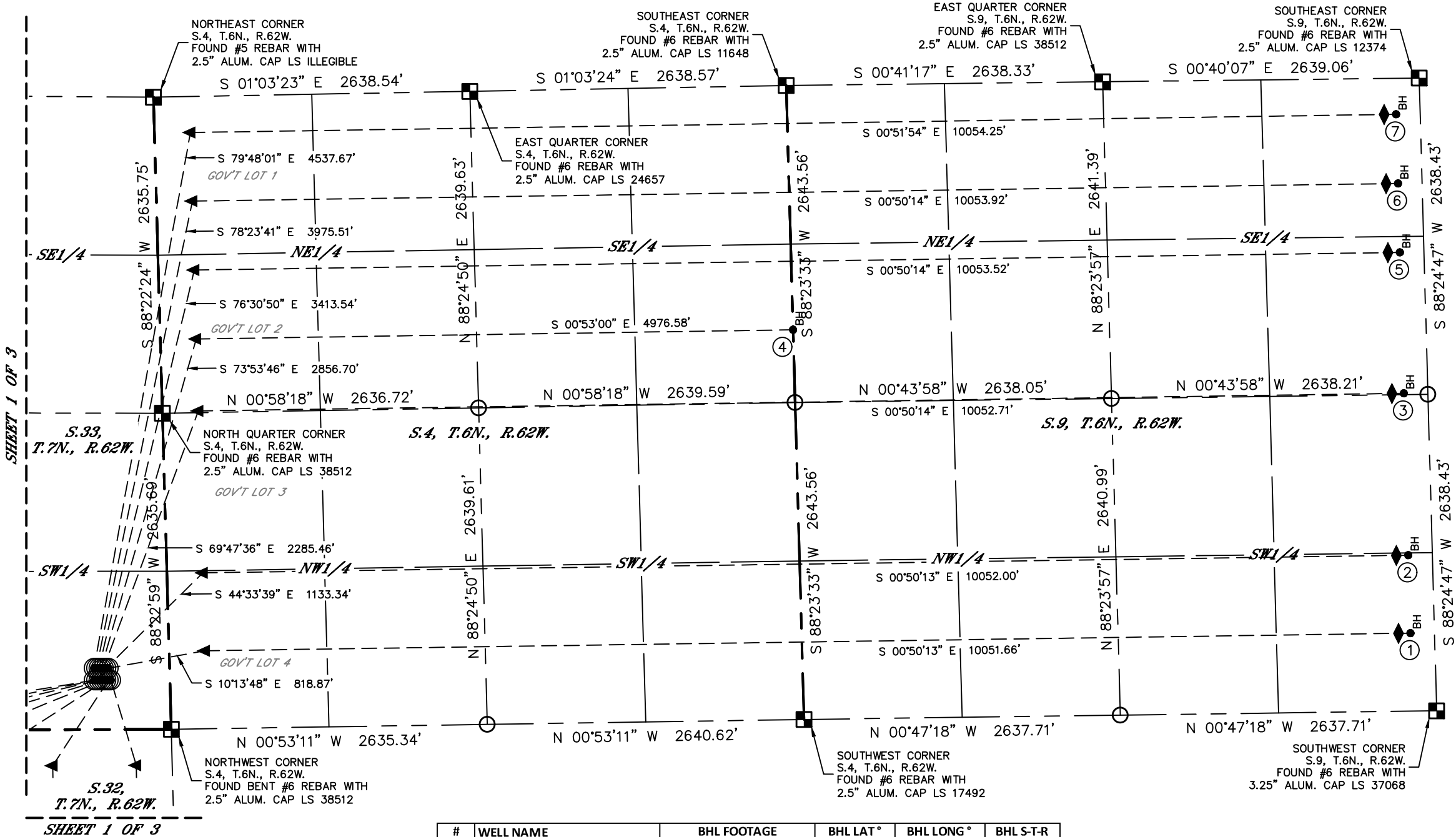
Lat40°, Inc. 6250 W. 10th Street, Unit 2, Greeley, CO 970-515-5294

DIRECTIONAL WELL PLAT

BARRACUDA PAD
BISON OIL & GAS IV

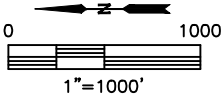
Q: SW/4
SECTION: 33
TOWNSHIP: 7N
RANGE: 62W
6TH. P.M.
WELD COUNTY, CO

THIS MAP DOES NOT REPRESENT A BOUNDARY SURVEY



- LEGEND
- = ALIQUOT MONUMENT AS DESCRIBED
 - = CALCULATED POSITION
 - ⊙ = SURFACE HOLE LOCATION (SHL)
 - ▲ = ENTRY POINT LOCATION (EP)
 - ◆ = BOTTOM OF PRODUCTIVE ZONE (BPZ)
 - = BOTTOM HOLE LOCATION (BHL)
 - ⊕ = EXISTING WELL
 - ⊖ = ABANDONED WELL

#	WELL NAME	BHL FOOTAGE				BHL LAT °	BHL LONG °	BHL S-T-R
1	WHITETAIL FED 7-62 33-9-1	200	FSL	650	FWL	40.49479	-104.33461	9-6-62
2	WHITETAIL FED 7-62 33-9-2	200	FSL	1300	FWL	40.49482	-104.33228	9-6-62
3	WHITETAIL FED 7-62 33-9-3	200	FSL	2627	FEL	40.49487	-104.32742	9-6-62
4	WHITETAIL FED 7-62 33-9-4	0	FNL	2037	FEL	40.50883	-104.32528	9-6-62
5	WHITETAIL FED 7-62 33-9-5	200	FSL	1452	FEL	40.49492	-104.32320	9-6-62
6	WHITETAIL FED 7-62 33-9-6	200	FSL	877	FEL	40.49494	-104.32113	9-6-62
7	WHITETAIL FED 7-62 33-9-7	200	FSL	300	FEL	40.49497	-104.31906	9-6-62
8	BARRACUDA 7-62 33-31-1	300	FNL	200	FWL	40.53673	-104.37414	31-7-62
9	BARRACUDA 7-62 33-31-2	968	FNL	200	FWL	40.53489	-104.37414	31-7-62
10	BARRACUDA 7-62 33-31-3	1636	FNL	200	FWL	40.53306	-104.37414	31-7-62
11	BARRACUDA 7-62 33-31-4	2304	FNL	200	FWL	40.53123	-104.37414	31-7-62
12	BARRACUDA 7-62 33-31-5	2368	FSL	200	FWL	40.52940	-104.37413	31-7-62
13	BARRACUDA 7-62 33-31-6	1700	FSL	200	FWL	40.52756	-104.37413	31-7-62
14	BARRACUDA 7-62 33-31-7	1032	FSL	200	FWL	40.52573	-104.37413	31-7-62
15	BARRACUDA 7-62 33-31-8	300	FSL	200	FWL	40.52372	-104.37412	31-7-62



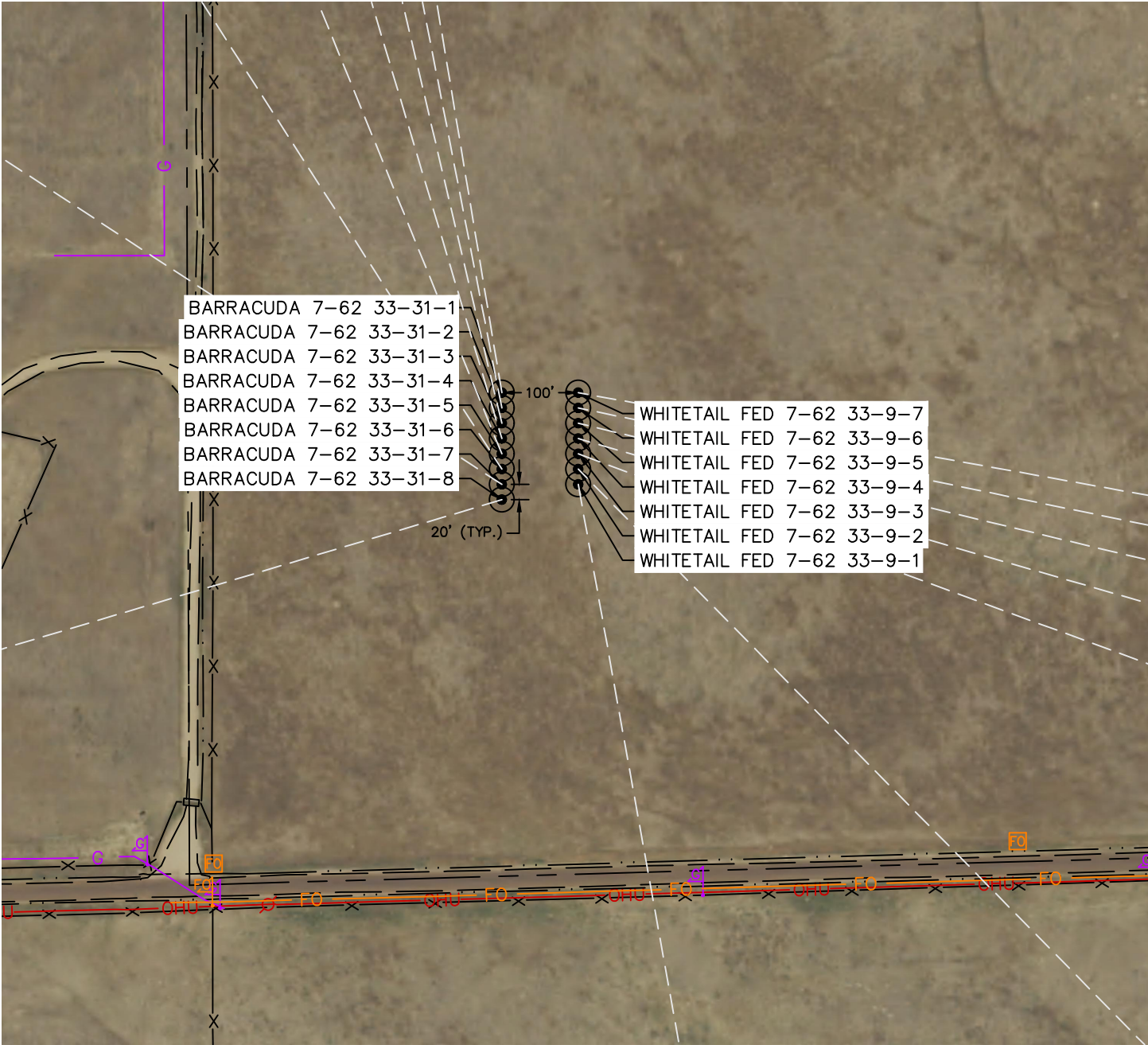


Lat40°, Inc. 6250 W. 10th Street, Unit 2, Greeley, CO 970-515-5294

DIRECTIONAL WELL PLAT

BARRACUDA PAD
BISON OIL & GAS IV

Q: SW/4
SECTION: 33
TOWNSHIP: 7N
RANGE: 62W
6TH. P.M.
WELD COUNTY, CO



#	WELL NAME	SHL FOOTAGE					SHL LAT °	SHL LONG °	SHL PDOP	SHL ELEV (FT.)	SHL 1/4/1/4	SHL S-T-R
1	WHITETAIL FED 7-62 33-9-1	510	FSL	511	FWL		40.52459	-104.33515	1.2	4906	SWSW	33-7-62
2	WHITETAIL FED 7-62 33-9-2	530	FSL	511	FWL		40.52465	-104.33515	1.2	4906	SWSW	33-7-62
3	WHITETAIL FED 7-62 33-9-3	550	FSL	511	FWL		40.52470	-104.33515	1.2	4906	SWSW	33-7-62
4	WHITETAIL FED 7-62 33-9-4	570	FSL	511	FWL		40.52476	-104.33515	1.2	4905	SWSW	33-7-62
5	WHITETAIL FED 7-62 33-9-5	590	FSL	511	FWL		40.52481	-104.33515	1.2	4905	SWSW	33-7-62
6	WHITETAIL FED 7-62 33-9-6	610	FSL	511	FWL		40.52487	-104.33515	1.1	4905	SWSW	33-7-62
7	WHITETAIL FED 7-62 33-9-7	630	FSL	511	FWL		40.52492	-104.33515	1.0	4905	SWSW	33-7-62
8	BARRACUDA 7-62 33-31-1	632	FSL	411	FWL		40.52493	-104.33551	1.0	4905	SWSW	33-7-62
9	BARRACUDA 7-62 33-31-2	612	FSL	411	FWL		40.52487	-104.33551	1.0	4905	SWSW	33-7-62
10	BARRACUDA 7-62 33-31-3	592	FSL	411	FWL		40.52482	-104.33551	1.0	4905	SWSW	33-7-62
11	BARRACUDA 7-62 33-31-4	572	FSL	411	FWL		40.52476	-104.33551	1.0	4904	SWSW	33-7-62
12	BARRACUDA 7-62 33-31-5	552	FSL	411	FWL		40.52471	-104.33551	1.0	4904	SWSW	33-7-62
13	BARRACUDA 7-62 33-31-6	532	FSL	411	FWL		40.52465	-104.33551	1.0	4904	SWSW	33-7-62
14	BARRACUDA 7-62 33-31-7	512	FSL	411	FWL		40.52460	-104.33551	1.0	4904	SWSW	33-7-62
15	BARRACUDA 7-62 33-31-8	492	FSL	411	FWL		40.52454	-104.33551	1.0	4904	SWSW	33-7-62

