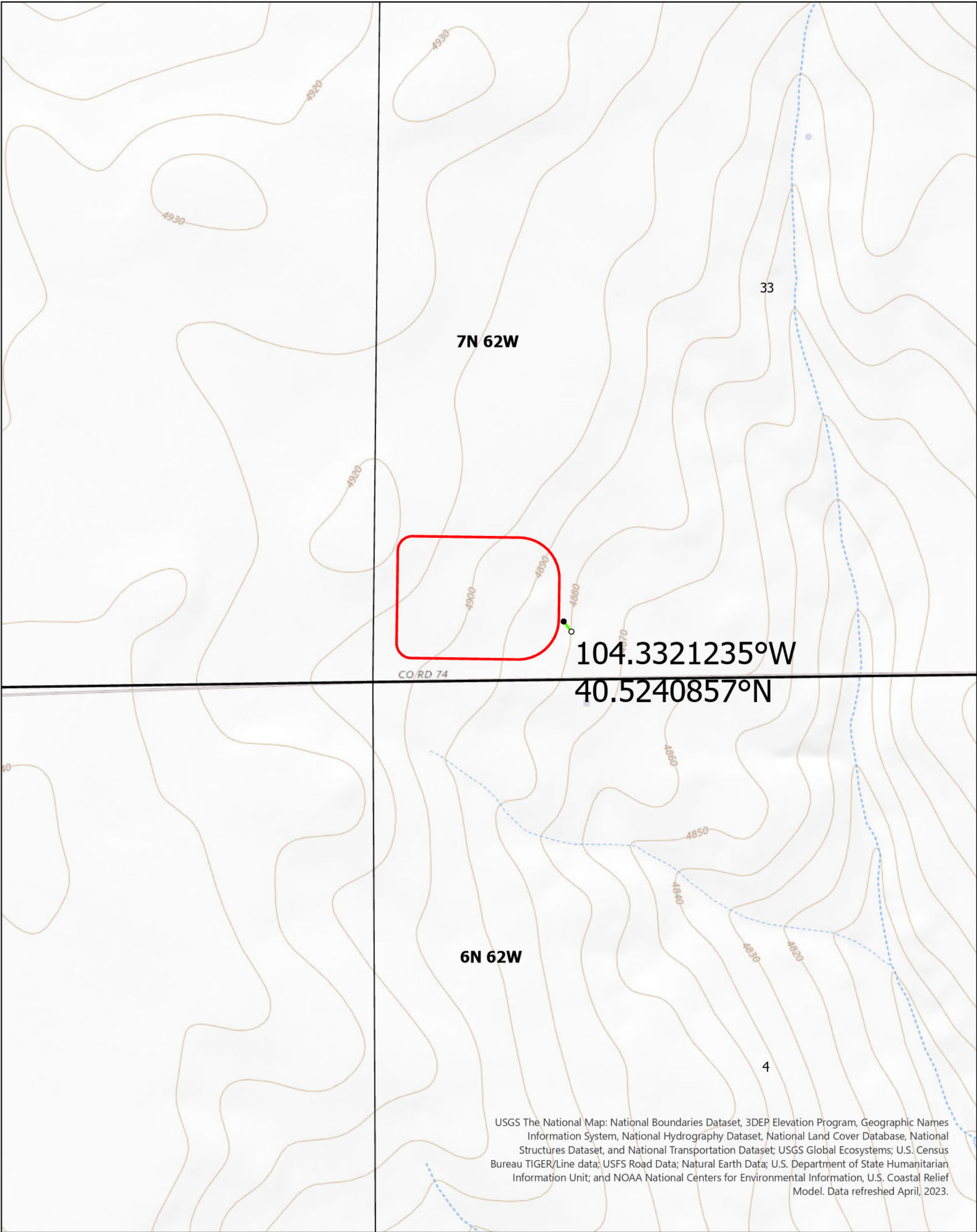


BISON IV OPERATING SYSTEM, LLC
BARRACUDA PAD
SEC33, T7N , R62W, 6th P.M.
WELD COUNTY



USGS The National Map: National Boundaries Dataset, 3DEP Elevation Program, Geographic Names Information System, National Hydrography Dataset, National Land Cover Database, National Structures Dataset, and National Transportation Dataset; USGS Global Ecosystems; U.S. Census Bureau TIGER/Line data; USFS Road Data; Natural Earth Data; U.S. Department of State Humanitarian Information Unit; and NOAA National Centers for Environmental Information, U.S. Coastal Relief Model. Data refreshed April, 2023.

REFERENCE AREA MAP FIGURE 1	<div><div></div> Limit of Disturbance</div> <div><div></div> Reference Transect</div> <div><div>o</div> Start</div> <div><div>•</div> End</div>	<div>Projection: WGS 1984 Date: 9/25/2023 Drafted by: HJL</div> <div><div>N</div><div><div></div><div>05001,000</div><div>Feet</div></div></div>
-----------------------------------	---	--

BISON IV OPERATING SYSTEM, LLC
BARRACUDA PAD
SEC33, T7N , R62W, 6th P.M.
WELD COUNTY



REFERENCE
AREA MAP
FIGURE 2

- Limit of Disturbance
- Reference Transect
- Start
- End

Projection: WGS 1984
Date: 9/25/2023
Drafted by: HJL



0 500 1,000
Feet