

## PROJECT DETAILS: Rio Blanco County, CO

Geodetic System: US State Plane 1983  
 Datum: North American Datum 1983  
 Ellipsoid: GRS 1980  
 Zone: Colorado Central Zone  
 System Datum: Mean Sea Level

## REFERENCE INFORMATION

Co-ordinate (N/E) Reference: Well Fed 921-24-299, True North  
 Vertical (TVD) Reference: KB=30' @ 7120.00usft  
 Section (VS) Reference: Slot - (0.00N, 0.00E)  
 Measured Depth Reference: KB=30' @ 7120.00usft  
 Calculation Method: Minimum Curvature

## WELLBORE TARGET DETAILS (MAP CO-ORDINATES AND LAT/LONG)

Name	TVD	+N/-S	+E/-W	Northing	Easting	Latitude	Longitude	Shape
Fed 921-24-299 - VP	5600.00	977.97	340.08	1753575.30	2171200.00	39.865397	-108.452935	Circle (Radius: 100.00)
Fed 921-24-299 - PBHL	9140.00	977.97	340.08	1753575.30	2171200.00	39.865397	-108.452935	Point

## ANNOTATIONS

MD	Inc	Azi	TVD	+N/-S	+E/-W	Vsect	Departure	Annotation
120.00	0.00	0.00	120.00	0.00	0.00	0.00	0.00	Start Build 2.00
733.40	12.27	19.17	728.73	61.79	21.49	65.42	65.42	Start 4154.51 hold at 733.40 MD
4887.91	12.27	19.17	4788.37	895.59	311.43	948.19	948.19	Start Drop -1.50
5705.78	0.00	0.00	5600.00	977.97	340.08	1035.42	1035.42	Start 3540.00 hold at 5705.78 MD
9245.78	0.00	0.00	9140.00	977.97	340.08	1035.42	1035.42	TD at 9245.78

## WELL DETAILS: Fed 921-24-299

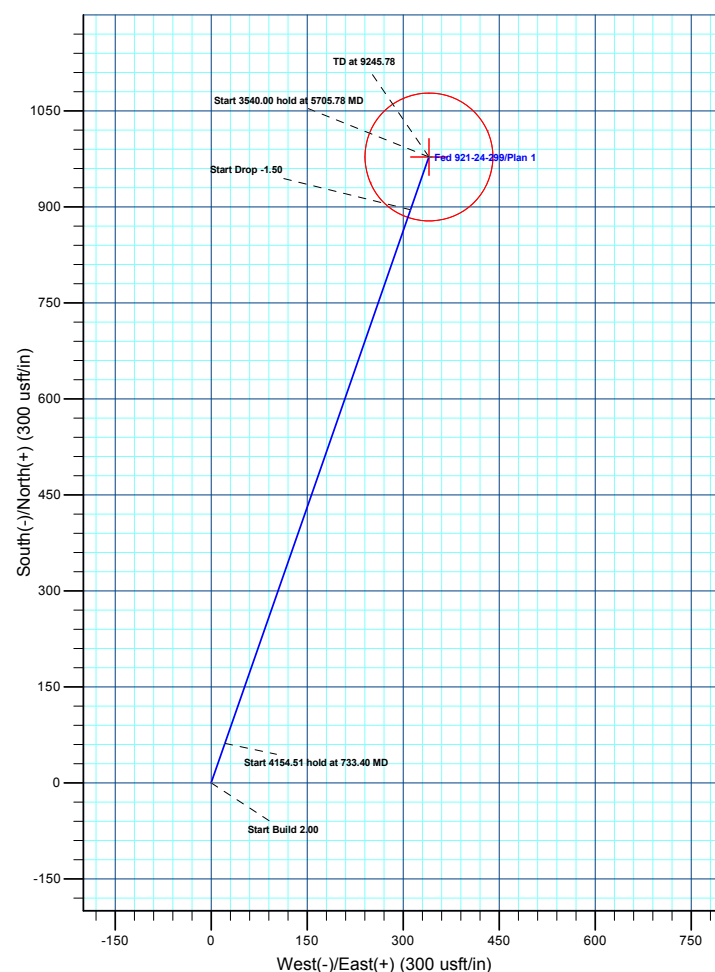
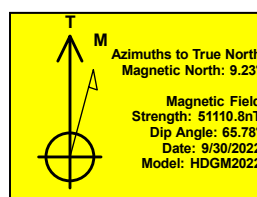
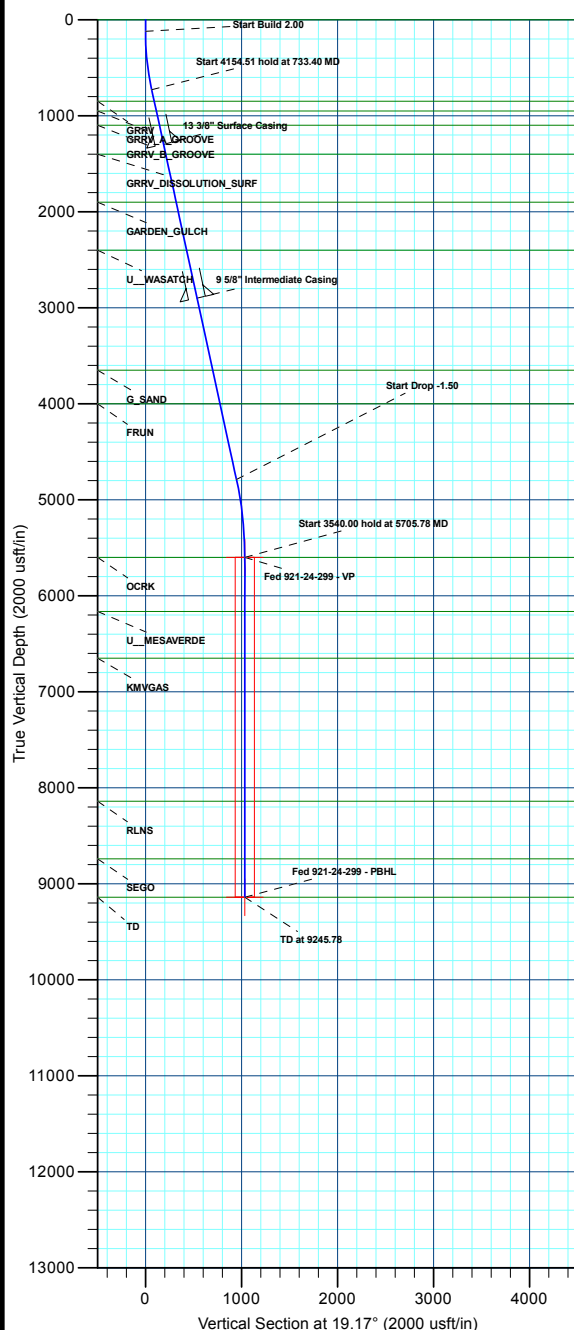
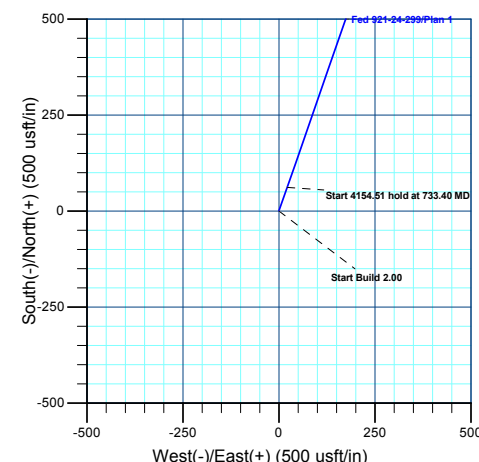
+N/-S	+E/-W	Northing	Ground Elev:	7090.00	Longitude	Slot
0.00	0.00	1752608.90	Easting	2170828.30	Latitude	
					39.862712	
					-108.454147	

## CASING DETAILS

TVD	MD	Name	Size
1300.00	1318.03	13 3/8" Surface Casing	13-3/8
2900.00	2955.42	9 5/8" Intermediate Casing	9-5/8

## FORMATION TOP DETAILS

TVDPath	MDPath	Formation
0.00	0.00	UINTA
850.00	857.51	GRRV
950.00	959.85	GRRV_A_GROOVE
1100.00	1113.35	GRRV_B_GROOVE
1400.00	1420.36	GRRV DISSOLUTION_SURF
1900.00	1932.05	GARDEN_GULCH
2400.00	2443.73	U_WASATCH
3650.00	3722.94	G_SAND
4000.00	4081.12	FRUN
5600.00	5705.78	OCRK
6165.00	6270.78	U_MESAVERDE
6650.00	6755.78	KMYGAS
8140.00	8245.78	RLNS
8740.00	8845.78	SEGO
9140.00	9245.78	TD



Plan: Plan 1 (Fed 921-24-299/Wellbore #1)

Created By: Chase Chambers Date: 13:55, September 30 2022

# **Terra Energy Partners, LLP**

**Rio Blanco County, CO**

**Fed 22-24-299 Pad**

**Fed 921-24-299**

**Wellbore #1**

**Plan: Plan 1**

## **KLX Well Planning Report**

**30 September, 2022**

## Well Planning Report

<b>Database:</b>	EDM 5000.1 Single User Db	<b>Local Co-ordinate Reference:</b>	Well Fed 921-24-299
<b>Company:</b>	Terra Energy Partners, LLP	<b>TVD Reference:</b>	KB=30' @ 7120.00usft
<b>Project:</b>	Rio Blanco County, CO	<b>MD Reference:</b>	KB=30' @ 7120.00usft
<b>Site:</b>	Fed 22-24-299 Pad	<b>North Reference:</b>	True
<b>Well:</b>	Fed 921-24-299	<b>Survey Calculation Method:</b>	Minimum Curvature
<b>Wellbore:</b>	Wellbore #1		
<b>Design:</b>	Plan 1		

<b>Project</b>	Rio Blanco County, CO		
<b>Map System:</b>	US State Plane 1983	<b>System Datum:</b>	Mean Sea Level
<b>Geo Datum:</b>	North American Datum 1983		
<b>Map Zone:</b>	Colorado Central Zone		

Site		Fed 22-24-299 Pad			
Site Position:		Northing:	1,752,608.90 usft	Latitude:	39.862713
From:	Map	Easting:	2,170,828.30 usft	Longitude:	-108.454147
Position Uncertainty:	0.00 usft	Slot Radius:	13-3/16 "	Grid Convergence:	-1.86 °

Well	Fed 921-24-299					
Well Position	+N/-S	0.00 usft	Northing:	1,752,608.90 usft	Latitude:	39.862713
	+E/-W	0.00 usft	Easting:	2,170,828.30 usft	Longitude:	-108.454147
Position Uncertainty		0.00 usft	Wellhead Elevation:		Ground Level:	7,090.00 usft

<b>Wellbore</b>	Wellbore #1				
<b>Magnetics</b>	<b>Model Name</b>	<b>Sample Date</b>	<b>Declination (°)</b>	<b>Dip Angle (°)</b>	<b>Field Strength (nT)</b>
	HDGM2022	9/30/2022	9.23	65.78	51,110.80000000

<b>Design</b>	Plan 1			
<b>Audit Notes:</b>				
<b>Version:</b>	<b>Phase:</b>	PLAN	<b>Tie On Depth:</b>	0.00
<b>Vertical Section:</b>	<b>Depth From (TVD) (usft)</b>	<b>+N/-S (usft)</b>	<b>+E/-W (usft)</b>	<b>Direction (°)</b>
	0.00	0.00	0.00	19.17

<b>Plan Sections</b>										
Measured Depth (usft)	Inclination (°)	Azimuth (°)	Vertical Depth (usft)	+N/-S (usft)	+E/-W (usft)	Dogleg Rate (°/100usft)	Build Rate (°/100usft)	Turn Rate (°/100usft)	TFO (°)	Target
0.00	0.00	0.00	0.00	0.00	0.00	0.00	0.00	0.00	0.00	
120.00	0.00	0.00	120.00	0.00	0.00	0.00	0.00	0.00	0.00	
733.40	12.27	19.17	728.73	61.79	21.49	2.00	2.00	0.00	19.17	
4,887.91	12.27	19.17	4,788.37	895.59	311.43	0.00	0.00	0.00	0.00	
5,705.78	0.00	0.00	5,600.00	977.97	340.08	1.50	-1.50	0.00	180.00	Fed 921-24-299 - VP
9,245.78	0.00	0.00	9,140.00	977.97	340.08	0.00	0.00	0.00	0.00	Fed 921-24-299 - PB

# Well Planning Report

<b>Database:</b>	EDM 5000.1 Single User Db	<b>Local Co-ordinate Reference:</b>	Well Fed 921-24-299
<b>Company:</b>	Terra Energy Partners, LLP	<b>TVD Reference:</b>	KB=30' @ 7120.00usft
<b>Project:</b>	Rio Blanco County, CO	<b>MD Reference:</b>	KB=30' @ 7120.00usft
<b>Site:</b>	Fed 22-24-299 Pad	<b>North Reference:</b>	True
<b>Well:</b>	Fed 921-24-299	<b>Survey Calculation Method:</b>	Minimum Curvature
<b>Wellbore:</b>	Wellbore #1		
<b>Design:</b>	Plan 1		

Planned Survey									
Measured Depth (usft)	Inclination (°)	Azimuth (°)	Vertical Depth (usft)	+N/-S (usft)	+E/-W (usft)	Vertical Section (usft)	Dogleg Rate (°/100usft)	Build Rate (°/100usft)	Turn Rate (°/100usft)
<b>UINTA</b>									
0.00	0.00	0.00	0.00	0.00	0.00	0.00	0.00	0.00	0.00
100.00	0.00	0.00	100.00	0.00	0.00	0.00	0.00	0.00	0.00
<b>Start Build 2.00</b>									
120.00	0.00	0.00	120.00	0.00	0.00	0.00	0.00	0.00	0.00
200.00	1.60	19.17	199.99	1.05	0.37	1.12	2.00	2.00	0.00
300.00	3.60	19.17	299.88	5.34	1.86	5.65	2.00	2.00	0.00
400.00	5.60	19.17	399.55	12.91	4.49	13.67	2.00	2.00	0.00
500.00	7.60	19.17	498.89	23.77	8.27	25.17	2.00	2.00	0.00
600.00	9.60	19.17	597.76	37.89	13.18	40.12	2.00	2.00	0.00
700.00	11.60	19.17	696.05	55.27	19.22	58.51	2.00	2.00	0.00
<b>Start 4154.51 hold at 733.40 MD</b>									
733.40	12.27	19.17	728.73	61.79	21.49	65.42	2.00	2.00	0.00
800.00	12.27	19.17	793.80	75.16	26.14	79.57	0.00	0.00	0.00
<b>GRRV</b>									
857.51	12.27	19.17	850.00	86.70	30.15	91.79	0.00	0.00	0.00
900.00	12.27	19.17	891.52	95.23	33.11	100.82	0.00	0.00	0.00
<b>GRRV_A_GROOVE</b>									
959.85	12.27	19.17	950.00	107.24	37.29	113.54	0.00	0.00	0.00
1,000.00	12.27	19.17	989.24	115.30	40.09	122.07	0.00	0.00	0.00
1,100.00	12.27	19.17	1,086.95	135.37	47.07	143.32	0.00	0.00	0.00
<b>GRRV_B_GROOVE</b>									
1,113.35	12.27	19.17	1,100.00	138.05	48.00	146.15	0.00	0.00	0.00
1,200.00	12.27	19.17	1,184.67	155.43	54.05	164.56	0.00	0.00	0.00
1,300.00	12.27	19.17	1,282.39	175.50	61.03	185.81	0.00	0.00	0.00
<b>13 3/8" Surface Casing</b>									
1,318.03	12.27	19.17	1,300.00	179.12	62.29	189.64	0.00	0.00	0.00
1,400.00	12.27	19.17	1,380.10	195.57	68.01	207.06	0.00	0.00	0.00
<b>GRRV DISSOLUTION_SURF</b>									
1,420.36	12.27	19.17	1,400.00	199.66	69.43	211.39	0.00	0.00	0.00
1,500.00	12.27	19.17	1,477.82	215.64	74.99	228.31	0.00	0.00	0.00
1,600.00	12.27	19.17	1,575.53	235.71	81.97	249.56	0.00	0.00	0.00
1,700.00	12.27	19.17	1,673.25	255.78	88.95	270.81	0.00	0.00	0.00
1,800.00	12.27	19.17	1,770.97	275.85	95.93	292.06	0.00	0.00	0.00
1,900.00	12.27	19.17	1,868.68	295.92	102.91	313.30	0.00	0.00	0.00
<b>GARDEN_GULCH</b>									
1,932.05	12.27	19.17	1,900.00	302.35	105.14	320.11	0.00	0.00	0.00
2,000.00	12.27	19.17	1,966.40	315.99	109.88	334.55	0.00	0.00	0.00
2,100.00	12.27	19.17	2,064.12	336.06	116.86	355.80	0.00	0.00	0.00
2,200.00	12.27	19.17	2,161.83	356.13	123.84	377.05	0.00	0.00	0.00
2,300.00	12.27	19.17	2,259.55	376.20	130.82	398.30	0.00	0.00	0.00
2,400.00	12.27	19.17	2,357.27	396.27	137.80	419.55	0.00	0.00	0.00
<b>U_WASATCH</b>									
2,443.73	12.27	19.17	2,400.00	405.05	140.85	428.84	0.00	0.00	0.00
2,500.00	12.27	19.17	2,454.98	416.34	144.78	440.80	0.00	0.00	0.00
2,600.00	12.27	19.17	2,552.70	436.41	151.76	462.04	0.00	0.00	0.00
2,700.00	12.27	19.17	2,650.42	456.48	158.74	483.29	0.00	0.00	0.00
2,800.00	12.27	19.17	2,748.13	476.55	165.72	504.54	0.00	0.00	0.00
2,900.00	12.27	19.17	2,845.85	496.62	172.70	525.79	0.00	0.00	0.00
<b>9 5/8" Intermediate Casing</b>									
2,955.42	12.27	19.17	2,900.00	507.74	176.56	537.56	0.00	0.00	0.00
3,000.00	12.27	19.17	2,943.56	516.69	179.67	547.04	0.00	0.00	0.00
3,100.00	12.27	19.17	3,041.28	536.76	186.65	568.29	0.00	0.00	0.00

# Well Planning Report

<b>Database:</b>	EDM 5000.1 Single User Db	<b>Local Co-ordinate Reference:</b>	Well Fed 921-24-299
<b>Company:</b>	Terra Energy Partners, LLP	<b>TVD Reference:</b>	KB=30' @ 7120.00usft
<b>Project:</b>	Rio Blanco County, CO	<b>MD Reference:</b>	KB=30' @ 7120.00usft
<b>Site:</b>	Fed 22-24-299 Pad	<b>North Reference:</b>	True
<b>Well:</b>	Fed 921-24-299	<b>Survey Calculation Method:</b>	Minimum Curvature
<b>Wellbore:</b>	Wellbore #1		
<b>Design:</b>	Plan 1		

Planned Survey									
Measured Depth (usft)	Inclination (°)	Azimuth (°)	Vertical Depth (usft)	+N/-S (usft)	+E/-W (usft)	Vertical Section (usft)	Dogleg Rate (°/100usft)	Build Rate (°/100usft)	Turn Rate (°/100usft)
3,200.00	12.27	19.17	3,139.00	556.83	193.63	589.54	0.00	0.00	0.00
3,300.00	12.27	19.17	3,236.71	576.90	200.61	610.78	0.00	0.00	0.00
3,400.00	12.27	19.17	3,334.43	596.97	207.59	632.03	0.00	0.00	0.00
3,500.00	12.27	19.17	3,432.15	617.04	214.57	653.28	0.00	0.00	0.00
3,600.00	12.27	19.17	3,529.86	637.11	221.55	674.53	0.00	0.00	0.00
3,700.00	12.27	19.17	3,627.58	657.18	228.53	695.78	0.00	0.00	0.00
G_SAND									
3,722.94	12.27	19.17	3,650.00	661.78	230.13	700.65	0.00	0.00	0.00
3,800.00	12.27	19.17	3,725.30	677.25	235.51	717.03	0.00	0.00	0.00
3,900.00	12.27	19.17	3,823.01	697.32	242.49	738.27	0.00	0.00	0.00
4,000.00	12.27	19.17	3,920.73	717.39	249.47	759.52	0.00	0.00	0.00
FRUN									
4,081.12	12.27	19.17	4,000.00	733.67	255.13	776.76	0.00	0.00	0.00
4,100.00	12.27	19.17	4,018.45	737.46	256.44	780.77	0.00	0.00	0.00
4,200.00	12.27	19.17	4,116.16	757.53	263.42	802.02	0.00	0.00	0.00
4,300.00	12.27	19.17	4,213.88	777.59	270.40	823.27	0.00	0.00	0.00
4,400.00	12.27	19.17	4,311.59	797.66	277.38	844.52	0.00	0.00	0.00
4,500.00	12.27	19.17	4,409.31	817.73	284.36	865.77	0.00	0.00	0.00
4,600.00	12.27	19.17	4,507.03	837.80	291.34	887.01	0.00	0.00	0.00
4,700.00	12.27	19.17	4,604.74	857.87	298.32	908.26	0.00	0.00	0.00
4,800.00	12.27	19.17	4,702.46	877.94	305.30	929.51	0.00	0.00	0.00
Start Drop -1.50									
4,887.91	12.27	19.17	4,788.37	895.59	311.43	948.19	0.00	0.00	0.00
4,900.00	12.09	19.17	4,800.18	898.00	312.27	950.74	1.50	-1.50	0.00
5,000.00	10.59	19.17	4,898.23	916.56	318.73	970.40	1.50	-1.50	0.00
5,100.00	9.09	19.17	4,996.75	932.70	324.34	987.48	1.50	-1.50	0.00
5,200.00	7.59	19.17	5,095.69	946.39	329.10	1,001.98	1.50	-1.50	0.00
5,300.00	6.09	19.17	5,194.98	957.64	333.01	1,013.88	1.50	-1.50	0.00
5,400.00	4.59	19.17	5,294.54	966.42	336.07	1,023.18	1.50	-1.50	0.00
5,500.00	3.09	19.17	5,394.32	972.74	338.26	1,029.88	1.50	-1.50	0.00
5,600.00	1.59	19.17	5,494.23	976.59	339.60	1,033.95	1.50	-1.50	0.00
Start 3540.00 hold at 5705.78 MD - OCRK									
5,705.78	0.00	0.00	5,600.00	977.97	340.08	1,035.42	1.50	-1.50	0.00
5,800.00	0.00	0.00	5,694.22	977.97	340.08	1,035.42	0.00	0.00	0.00
5,900.00	0.00	0.00	5,794.22	977.97	340.08	1,035.42	0.00	0.00	0.00
6,000.00	0.00	0.00	5,894.22	977.97	340.08	1,035.42	0.00	0.00	0.00
6,100.00	0.00	0.00	5,994.22	977.97	340.08	1,035.42	0.00	0.00	0.00
6,200.00	0.00	0.00	6,094.22	977.97	340.08	1,035.42	0.00	0.00	0.00
U_MESAVERDE									
6,270.78	0.00	0.00	6,165.00	977.97	340.08	1,035.42	0.00	0.00	0.00
6,300.00	0.00	0.00	6,194.22	977.97	340.08	1,035.42	0.00	0.00	0.00
6,400.00	0.00	0.00	6,294.22	977.97	340.08	1,035.42	0.00	0.00	0.00
6,500.00	0.00	0.00	6,394.22	977.97	340.08	1,035.42	0.00	0.00	0.00
6,600.00	0.00	0.00	6,494.22	977.97	340.08	1,035.42	0.00	0.00	0.00
6,700.00	0.00	0.00	6,594.22	977.97	340.08	1,035.42	0.00	0.00	0.00
KMGAS									
6,755.78	0.00	0.00	6,650.00	977.97	340.08	1,035.42	0.00	0.00	0.00
6,800.00	0.00	0.00	6,694.22	977.97	340.08	1,035.42	0.00	0.00	0.00
6,900.00	0.00	0.00	6,794.22	977.97	340.08	1,035.42	0.00	0.00	0.00
7,000.00	0.00	0.00	6,894.22	977.97	340.08	1,035.42	0.00	0.00	0.00
7,100.00	0.00	0.00	6,994.22	977.97	340.08	1,035.42	0.00	0.00	0.00
7,200.00	0.00	0.00	7,094.22	977.97	340.08	1,035.42	0.00	0.00	0.00
7,300.00	0.00	0.00	7,194.22	977.97	340.08	1,035.42	0.00	0.00	0.00

## Well Planning Report

<b>Database:</b>	EDM 5000.1 Single User Db	<b>Local Co-ordinate Reference:</b>	Well Fed 921-24-299
<b>Company:</b>	Terra Energy Partners, LLP	<b>TVD Reference:</b>	KB=30' @ 7120.00usft
<b>Project:</b>	Rio Blanco County, CO	<b>MD Reference:</b>	KB=30' @ 7120.00usft
<b>Site:</b>	Fed 22-24-299 Pad	<b>North Reference:</b>	True
<b>Well:</b>	Fed 921-24-299	<b>Survey Calculation Method:</b>	Minimum Curvature
<b>Wellbore:</b>	Wellbore #1		
<b>Design:</b>	Plan 1		

Planned Survey									
Measured Depth (usft)	Inclination (°)	Azimuth (°)	Vertical Depth (usft)	+N/-S (usft)	+E/-W (usft)	Vertical Section (usft)	Dogleg Rate (°/100usft)	Build Rate (°/100usft)	Turn Rate (°/100usft)
7,400.00	0.00	0.00	7,294.22	977.97	340.08	1,035.42	0.00	0.00	0.00
7,500.00	0.00	0.00	7,394.22	977.97	340.08	1,035.42	0.00	0.00	0.00
7,600.00	0.00	0.00	7,494.22	977.97	340.08	1,035.42	0.00	0.00	0.00
7,700.00	0.00	0.00	7,594.22	977.97	340.08	1,035.42	0.00	0.00	0.00
7,800.00	0.00	0.00	7,694.22	977.97	340.08	1,035.42	0.00	0.00	0.00
7,900.00	0.00	0.00	7,794.22	977.97	340.08	1,035.42	0.00	0.00	0.00
8,000.00	0.00	0.00	7,894.22	977.97	340.08	1,035.42	0.00	0.00	0.00
8,100.00	0.00	0.00	7,994.22	977.97	340.08	1,035.42	0.00	0.00	0.00
8,200.00	0.00	0.00	8,094.22	977.97	340.08	1,035.42	0.00	0.00	0.00
RLNS									
8,245.78	0.00	0.00	8,140.00	977.97	340.08	1,035.42	0.00	0.00	0.00
8,300.00	0.00	0.00	8,194.22	977.97	340.08	1,035.42	0.00	0.00	0.00
8,400.00	0.00	0.00	8,294.22	977.97	340.08	1,035.42	0.00	0.00	0.00
8,500.00	0.00	0.00	8,394.22	977.97	340.08	1,035.42	0.00	0.00	0.00
8,600.00	0.00	0.00	8,494.22	977.97	340.08	1,035.42	0.00	0.00	0.00
8,700.00	0.00	0.00	8,594.22	977.97	340.08	1,035.42	0.00	0.00	0.00
8,800.00	0.00	0.00	8,694.22	977.97	340.08	1,035.42	0.00	0.00	0.00
SEGO									
8,845.78	0.00	0.00	8,740.00	977.97	340.08	1,035.42	0.00	0.00	0.00
8,900.00	0.00	0.00	8,794.22	977.97	340.08	1,035.42	0.00	0.00	0.00
9,000.00	0.00	0.00	8,894.22	977.97	340.08	1,035.42	0.00	0.00	0.00
9,100.00	0.00	0.00	8,994.22	977.97	340.08	1,035.42	0.00	0.00	0.00
9,200.00	0.00	0.00	9,094.22	977.97	340.08	1,035.42	0.00	0.00	0.00
TD at 9245.78 - TD									
9,245.78	0.00	0.00	9,140.00	977.97	340.08	1,035.42	0.00	0.00	0.00

Design Targets									
Target Name - hit/miss target - Shape	Dip Angle (°)	Dip Dir. (°)	TVD (usft)	+N/-S (usft)	+E/-W (usft)	Northing (usft)	Easting (usft)	Latitude	Longitude
Fed 921-24-299 - VP - plan hits target center - Circle (radius 100.00)	0.00	0.00	5,600.00	977.97	340.08	1,753,575.30	2,171,200.00	39.865397	-108.452936
Fed 921-24-299 - PBHL - plan hits target center - Point	0.00	0.00	9,140.00	977.97	340.08	1,753,575.30	2,171,200.00	39.865397	-108.452936

Casing Points					
Measured Depth (usft)	Vertical Depth (usft)	Name	Casing Diameter (")	Hole Diameter (")	
1,318.03	1,300.00	13 3/8" Surface Casing	13-3/8	17-1/2	
2,955.42	2,900.00	9 5/8" Intermediate Casing	9-5/8	12-1/4	

## Well Planning Report

<b>Database:</b>	EDM 5000.1 Single User Db	<b>Local Co-ordinate Reference:</b>	Well Fed 921-24-299
<b>Company:</b>	Terra Energy Partners, LLP	<b>TVD Reference:</b>	KB=30' @ 7120.00usft
<b>Project:</b>	Rio Blanco County, CO	<b>MD Reference:</b>	KB=30' @ 7120.00usft
<b>Site:</b>	Fed 22-24-299 Pad	<b>North Reference:</b>	True
<b>Well:</b>	Fed 921-24-299	<b>Survey Calculation Method:</b>	Minimum Curvature
<b>Wellbore:</b>	Wellbore #1		
<b>Design:</b>	Plan 1		

Formations						
Measured Depth (usft)	Vertical Depth (usft)	Name	Lithology	Dip (°)	Dip Direction (°)	
0.00	0.00	UINTA				
857.51	850.00	GRRV				
959.85	950.00	GRRV_A_GROOVE				
1,113.35	1,100.00	GRRV_B_GROOVE				
1,420.36	1,400.00	GRRV DISSOLUTION_SURF				
1,932.05	1,900.00	GARDEN_GULCH				
2,443.73	2,400.00	U__WASATCH				
3,722.94	3,650.00	G_SAND				
4,081.12	4,000.00	FRUN				
5,705.78	5,600.00	OCRK				
6,270.78	6,165.00	U__MESAVERDE				
6,755.78	6,650.00	KMVGAS				
8,245.78	8,140.00	RLNS				
8,845.78	8,740.00	SEGO				
9,245.78	9,140.00	TD				

Plan Annotations					
Measured Depth (usft)	Vertical Depth (usft)	Local Coordinates			
		+N/-S (usft)	+E/-W (usft)	Comment	
120.00	120.00	0.00	0.00	Start Build 2.00	
733.40	728.73	61.79	21.49	Start 4154.51 hold at 733.40 MD	
4,887.91	4,788.37	895.59	311.43	Start Drop -1.50	
5,705.78	5,600.00	977.97	340.08	Start 3540.00 hold at 5705.78 MD	
9,245.78	9,140.00	977.97	340.08	TD at 9245.78	