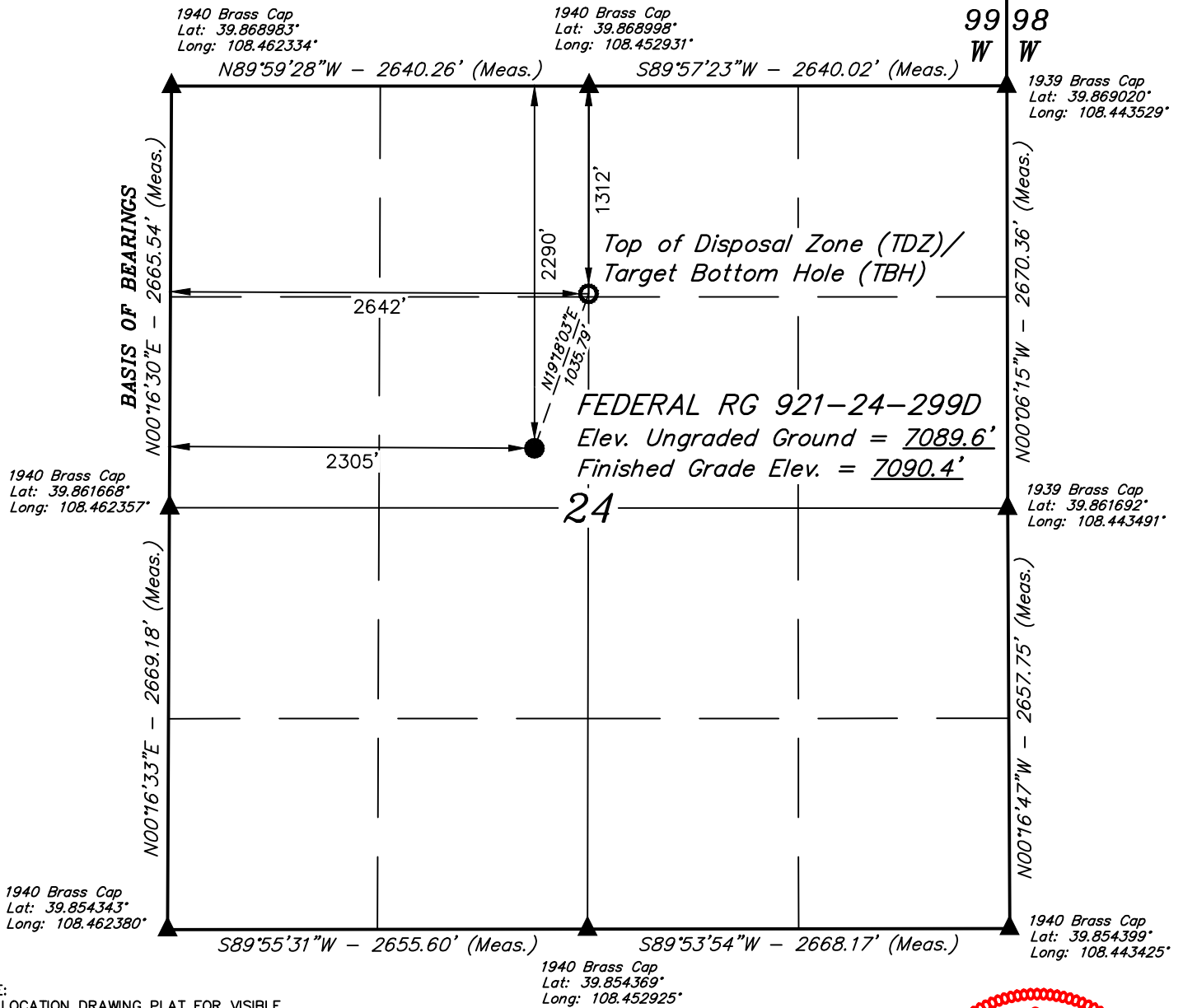


LEGEND:

T2S, R99W, 6th P.M.

- = PROPOSED WELLHEAD.
- = TOP OF DISPOSAL ZONE (TDZ)/
TARGET BOTTOM HOLE (TBH).
- ▲ = SECTION CORNERS
LOCATED. (NAD 83)



NOTE:
SEE LOCATION DRAWING PLAT FOR VISIBLE
IMPROVEMENTS WITHIN 2,000' OF THIS LOCATION.

PDOP = 1.6



| NAD 83 (SURFACE LOCATION) | NAD 83 (TDZ / TBH) |
|---|---|
| LATITUDE = 39°51'45.76" (39.862712°) | LATITUDE = 39°51'55.43" (39.865397°) |
| LONGITUDE = 108°27'14.93" (108.454147°) | LONGITUDE = 108°27'10.57" (108.452935°) |
| STATE PLANE NAD 83 (CO. NORTH) | STATE PLANE NAD 83 (CO. NORTH) |
| N: 1206649.03' E: 2170872.58' | N: 1207615.16' E: 2171244.97' |
| STATE PLANE NAD 83 (CO. CENTRAL) | STATE PLANE NAD 83 (CO. CENTRAL) |
| N: 1752608.85' E: 2170828.35' | N: 1753575.33' E: 2171199.99' |

CERTIFICATE

THIS IS TO CERTIFY THAT THE ABOVE PLAT WAS PREPARED AND
LOCATION AS SHOWN WAS STAKED ON THE GROUND FROM FIELD NOTES
OF ACTUAL SURVEYS MADE BY ME OR UNDER MY SUPERVISION AND THAT
THE SAME ARE TRUE AND CORRECT TO THE BEST OF MY KNOWLEDGE AND
BELIEF.

REGISTERED LAND SURVEYOR
REGISTRATION NO. 38130
STATE OF COLORADO 06-10-23

REV: 3 01-10-23 M.D. (ADD TDZ & WORDING CHANGE)

BASIS OF BEARINGS
BEARINGS ARE A BASED ASSUMPTION THAT THE WEST LINE OF THE NORTHWEST 1/4
OF SECTION 24 BEARS N00°16'30"E. MONUMENTS DESCRIBED HEREON.

BASIS OF ELEVATION
OPUS SOLUTION GENERATED NAVD 88



UELS, LLC
Corporate Office * 85 South 200 East
Vernal, UT 84078 * (435) 789-1017



TEP Rocky Mountain LLC

FEDERAL RG 921-24-299D
SE 1/4 NW 1/4, SECTION 24, T2S, R99W, 6th P.M.
RIO BLANCO COUNTY, COLORADO

| | | | |
|-------------|---------------------|----------|------------|
| SURVEYED BY | DAYTON SLAUGH, B.H. | 08-24-22 | SCALE |
| DRAWN BY | T.L.L. | 08-24-22 | 1" = 1000' |

WELL LOCATION PLAT