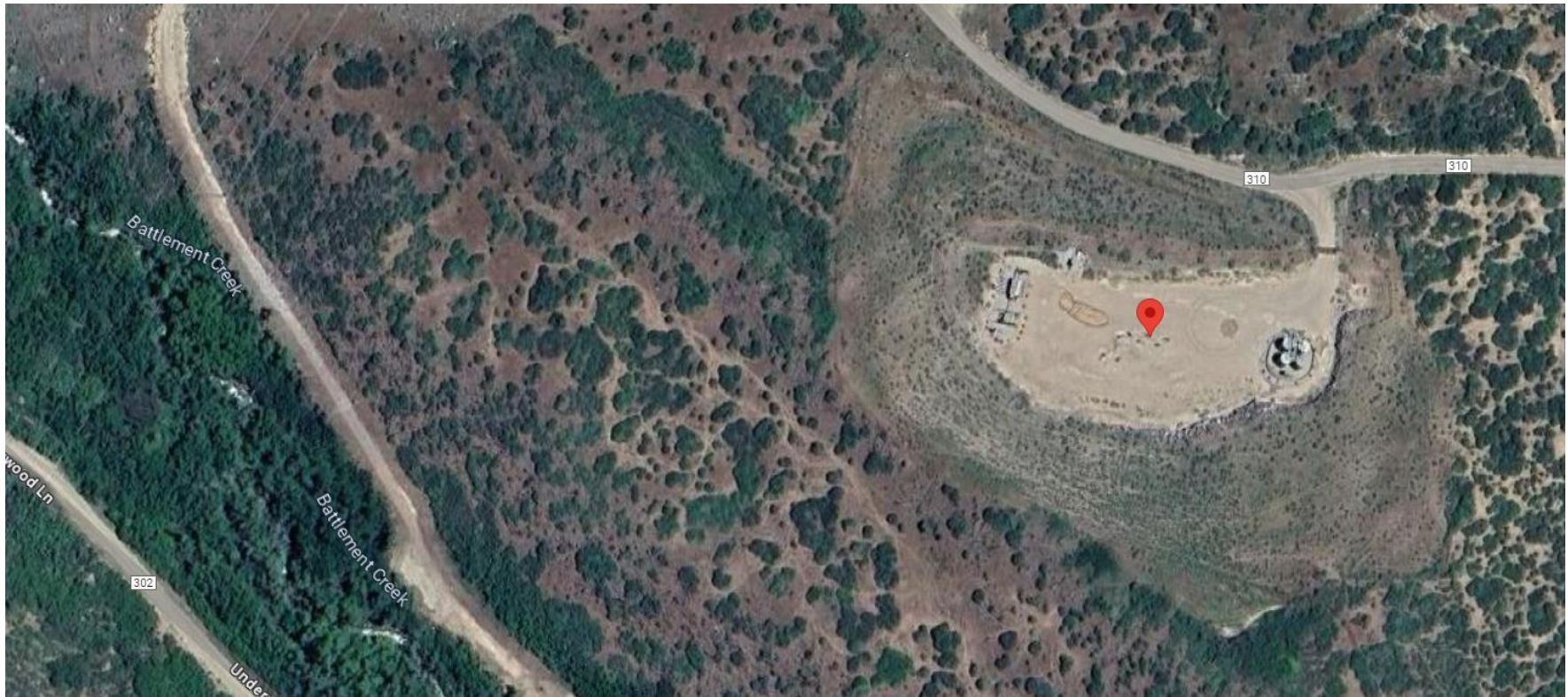


**Storm Water Management and Erosion control**  
**Location Name: CAERUS PICEANCE LLC Warren 15-9 (PI15) Pad**  
**Location #: 334751**



**Location Overview: Location is within High Priority/Density/NSO/Black Bear Habitat areas. Location is approximately 179 yards from Battlement Creek. Location is in close proximity to Rule 411a Surface Water External Buffer.**

**Section/Township/Range: 15 7S95W**





**Storm water Management and Erosion control**  
**Location Name: CAERUS PICEANCE LLC Warren 15-9 (PI15) Pad**  
**Location #: 334751**



**North West corner of location.**



**North East corner of location.**



**South West corner of location.**



**South East corner of location.**