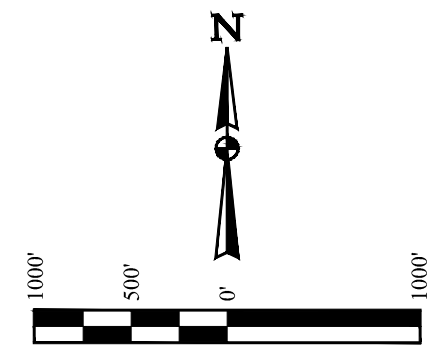
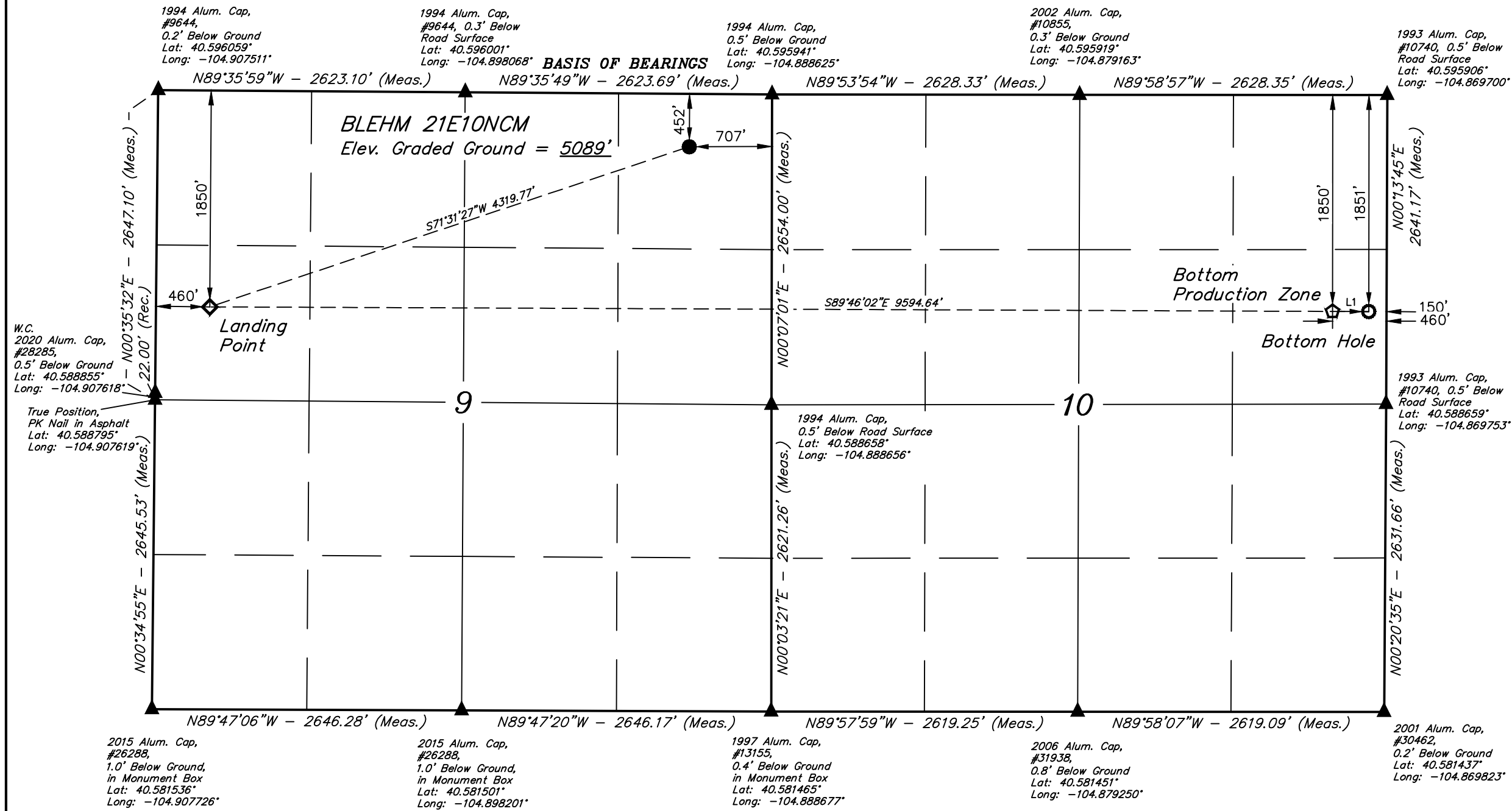


T7N, R67W, 6th P.M.

NICKEL ROAD OPERATING

BLEHM 21E10NCM
NE 1/4 NE 1/4, SECTION 9, T7N, R67W, 6th P.M.
WELD COUNTY, COLORADO

BASIS OF ELEVATION
OPUS SOLUTION GENERATED NAVD 88



NOTE:
Distances referenced on plat to section lines are perpendicular.

LEGEND:

- = PROPOSED WELLHEAD.
- ◆ = LANDING POINT.
- ◻ = BOTTOM PRODUCTION ZONE.
- = BOTTOM HOLE.
- ▲ = SECTION CORNERS LOCATED. (NAD 83)

PDOP = 1.6

NAD 83 (SURFACE LOCATION)	NAD 83 (LANDING POINT)	NAD 83 (BOTTOM PRODUCTION ZONE)	NAD 83 (BOTTOM HOLE)
LATITUDE = 40°35'40.98" (40.594716°) LONGITUDE = -104°53'28.23" (-104.891176°)	LATITUDE = 40°35'27.50" (40.590972°) LONGITUDE = -104°54'21.35" (-104.905931°)	LATITUDE = 40°35'26.99" (40.590832°) LONGITUDE = -104°52'17.01" (-104.871393°)	LATITUDE = 40°35'26.98" (40.590827°) LONGITUDE = -104°52'13.00" (-104.870277°)
NAD 27 (SURFACE LOCATION)	NAD 27 (LANDING POINT)	NAD 27 (BOTTOM PRODUCTION ZONE)	NAD 27 (BOTTOM HOLE)
LATITUDE = 40°35'41.04" (40.594734°) LONGITUDE = -104°53'26.33" (-104.890648°)	LATITUDE = 40°35'27.57" (40.590991°) LONGITUDE = -104°54'19.45" (-104.905403°)	LATITUDE = 40°35'27.06" (40.590851°) LONGITUDE = -104°52'15.12" (-104.870866°)	LATITUDE = 40°35'27.05" (40.590846°) LONGITUDE = -104°52'11.10" (-104.869750°)
STATE PLANE NAD 83 (CO. NORTH)	STATE PLANE NAD 83 (CO. NORTH)	STATE PLANE NAD 83 (CO. NORTH)	STATE PLANE NAD 83 (CO. NORTH)
N: 1460076.84' E: 3169075.43'	N: 1458685.20' E: 3164987.13'	N: 1458700.24' E: 3174579.30'	N: 1458700.72' E: 3174889.22'
STATE PLANE NAD 27 (CO. NORTH)	STATE PLANE NAD 27 (CO. NORTH)	STATE PLANE NAD 27 (CO. NORTH)	STATE PLANE NAD 27 (CO. NORTH)
N: 460076.41' E: 2169226.39'	N: 458684.72' E: 2165138.12'	N: 458699.92' E: 2174730.25'	N: 458700.41' E: 2175040.17'

CERTIFICATE

THIS IS TO CERTIFY THAT THE ABOVE PLAT WAS PREPARED FROM FIELD NOTES OF ACTUAL SURVEYS MADE BY ME OR UNDER MY SUPERVISION AND THAT THE SAME ARE TRUE AND CORRECT TO THE BEST OF MY KNOWLEDGE AND BELIEF.

Nate Welch
REGISTERED LAND SURVEYOR
REGISTRATION NO. 28285
STATE OF COLORADO
EXPIRES 12-31-24

REV: 2 02-16-24 D.J.G. (WELL NAME, LP, BHL CHANGES, & ADD BPZ)

UINTEAH
ENGINEERING & LAND SURVEYING

UELS, LLC
Corporate Office * 85 South 200 East
Vernal, UT 84078 * (435) 789-1017

SURVEYED BY	NATE WELCH, A.S.	06-23-20	SCALE
DRAWN BY	Z.L.	07-23-20	1" = 1000'

WELL LOCATION PLAT