



**RADIAL BOND TOOL
GAMMA RAY
CCL**

Company CIVITAS
Well SEARS 02-04-26
Field WATTENBURG
County BROOMFIELD
State CO Country USA

Location: API #: 05-014-20709
SEC 26 TWP 1N RGE 68W
Permanent Datum GL Elevation 5188'
Log Measured From KB 12'
Drilling Measured From GL
Elevation
K.B. ---
D.F. ---
G.L. 5171'

Date 20-JAN-2024

Run Number ONE
Depth Driller 8680'
Depth Logger 4070'
Bottom Logged Interval 4070'
Top Log Interval SURFACE
Open Hole Size 8.625'
Type Fluid WATER
Density / Viscosity N/A
Max. Recorded Temp. °
Estimated Cement Top N/A
Time Well Ready ON ARRIVAL
Time Logger on Bottom N/A
Equipment Number 7770
Location GREELEY, CO
Recorded By Wayne Wacker
Witnessed By Hector Tarrazas

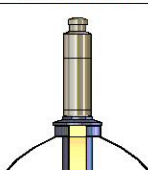
Borehole Record				Tubing Record			
Run Number	Bit	From	To	Size	Weight	From	To
Casing Record	Size			Wgt/Ft	Top	Bottom	
Surface String	8.625"			24#	SURFACE	1267'	
Prot. String							
Production String	4.5"			11.6#	SURFACE	8667'	
Liner							

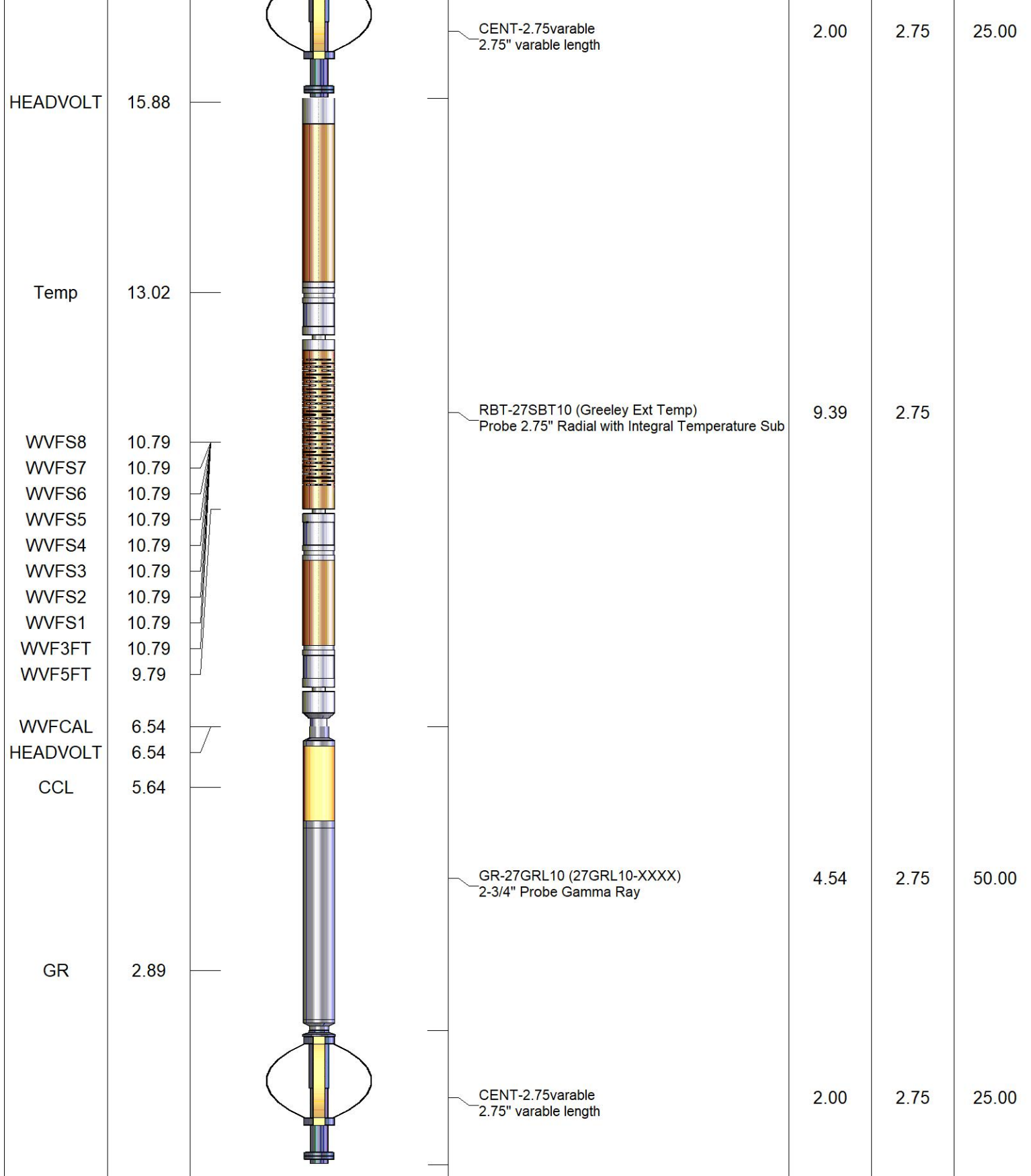
<<< Fold Here >>>

All interpretations are opinions based on inferences from electrical or other measurements and we cannot and do not guarantee the accuracy or correctness of any interpretation, and we shall not, except in the case of gross or willful negligence on our part, be liable or responsible for any loss, costs, damages, or expenses incurred or sustained by anyone resulting from any interpretation made by any of our officers, agents or employees. These interpretations are also subject to our general terms and conditions set out in our current Price Schedule.

Comments

**RAN CBL TO VERIFY CEMENT BOND
WELL LOADED ON ARRIVAL
CORRELATED TO KB AT 12 FEET**

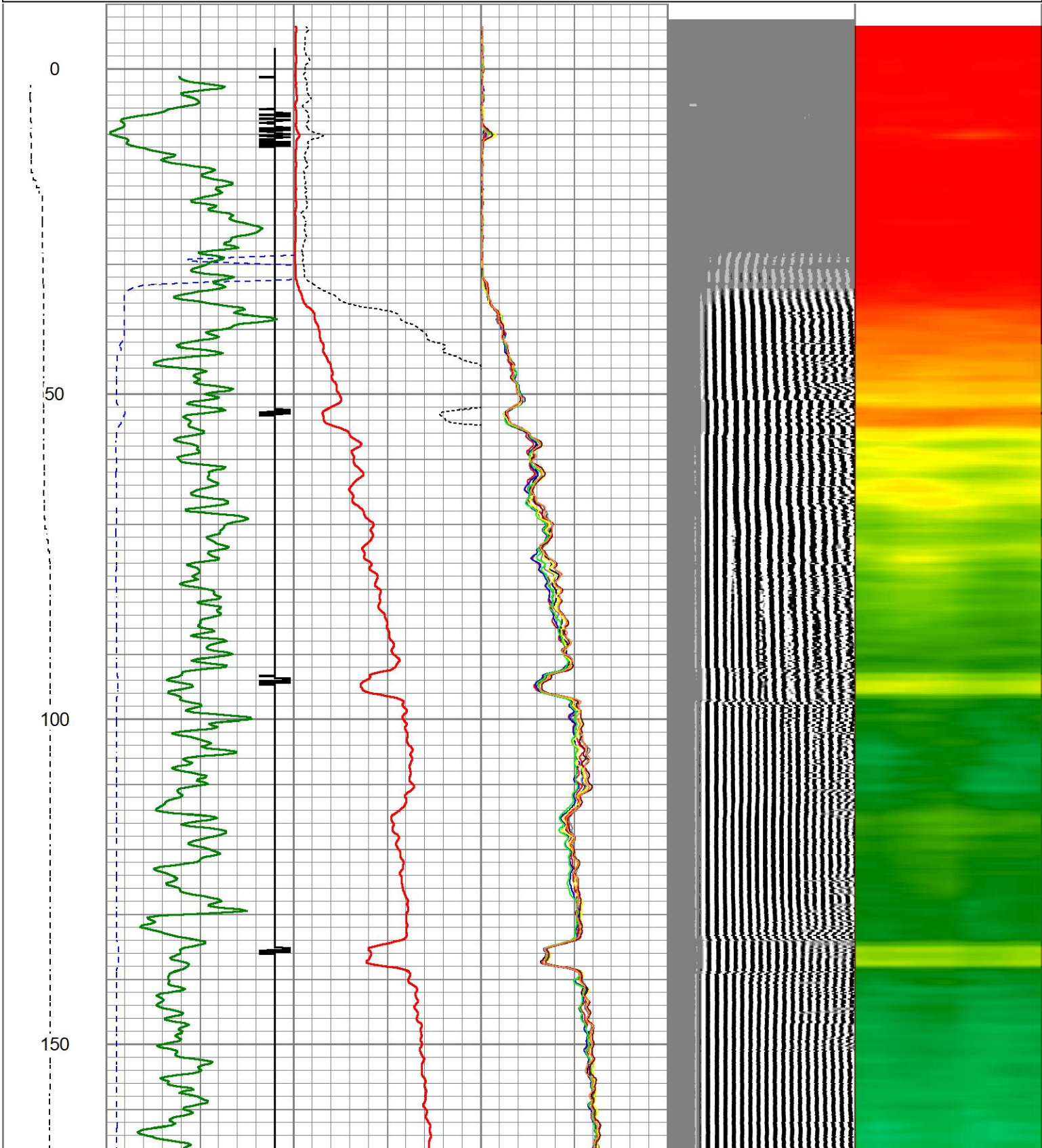
Sensor	Offset (ft)	Schematic	Description	Length (ft)	O.D. (in)	Weight (lb)
			CHD-1_7/16_Cabehead 1 7/16 Cablehead	1.00	1.44	5.00

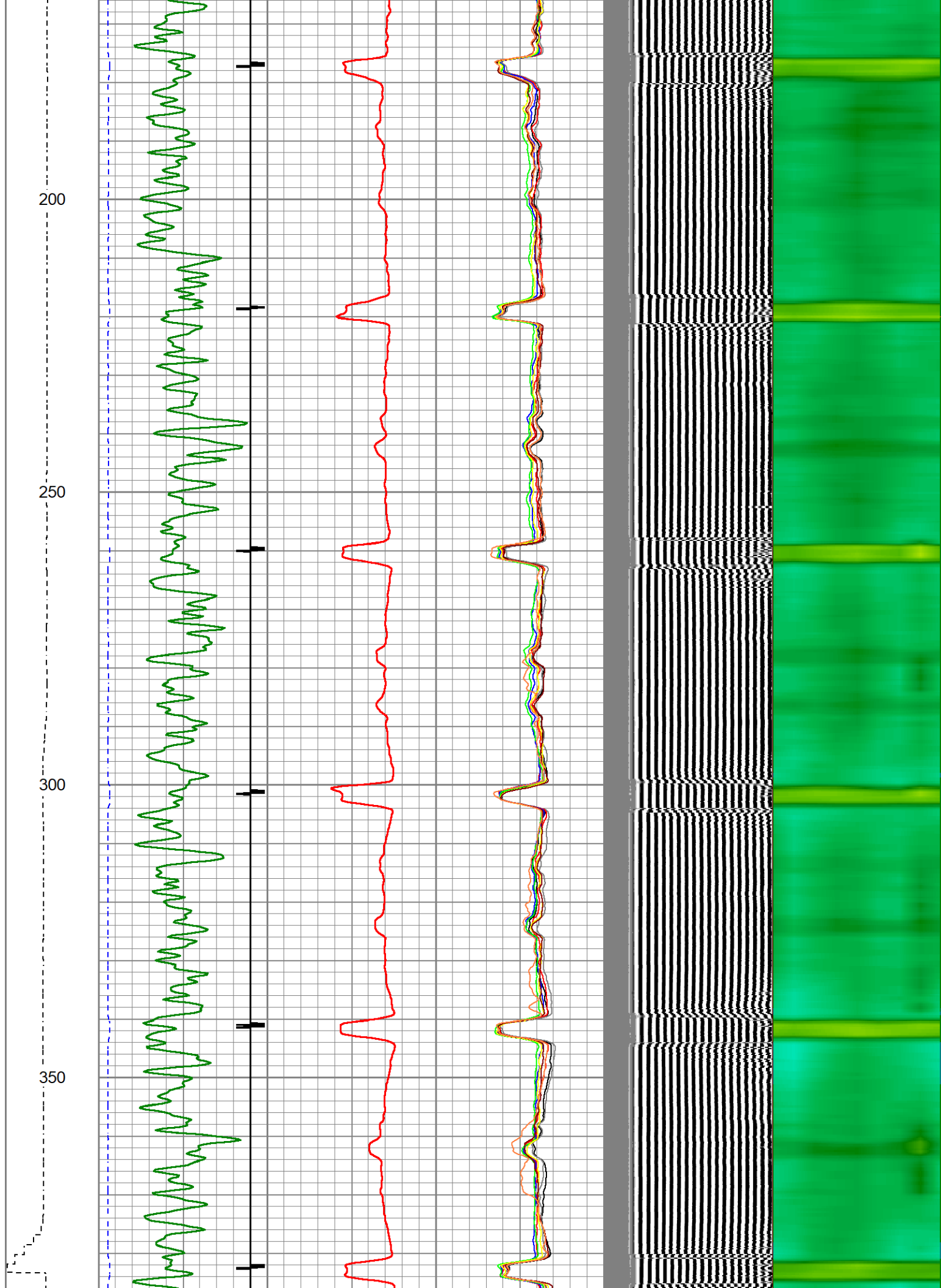


Dataset: civ--sears2-4-26_cbl.db: field/well/cbl/m
 Total length: 18.93 ft
 Total weight: 105.00 lb
 O.D.: 2.75 in

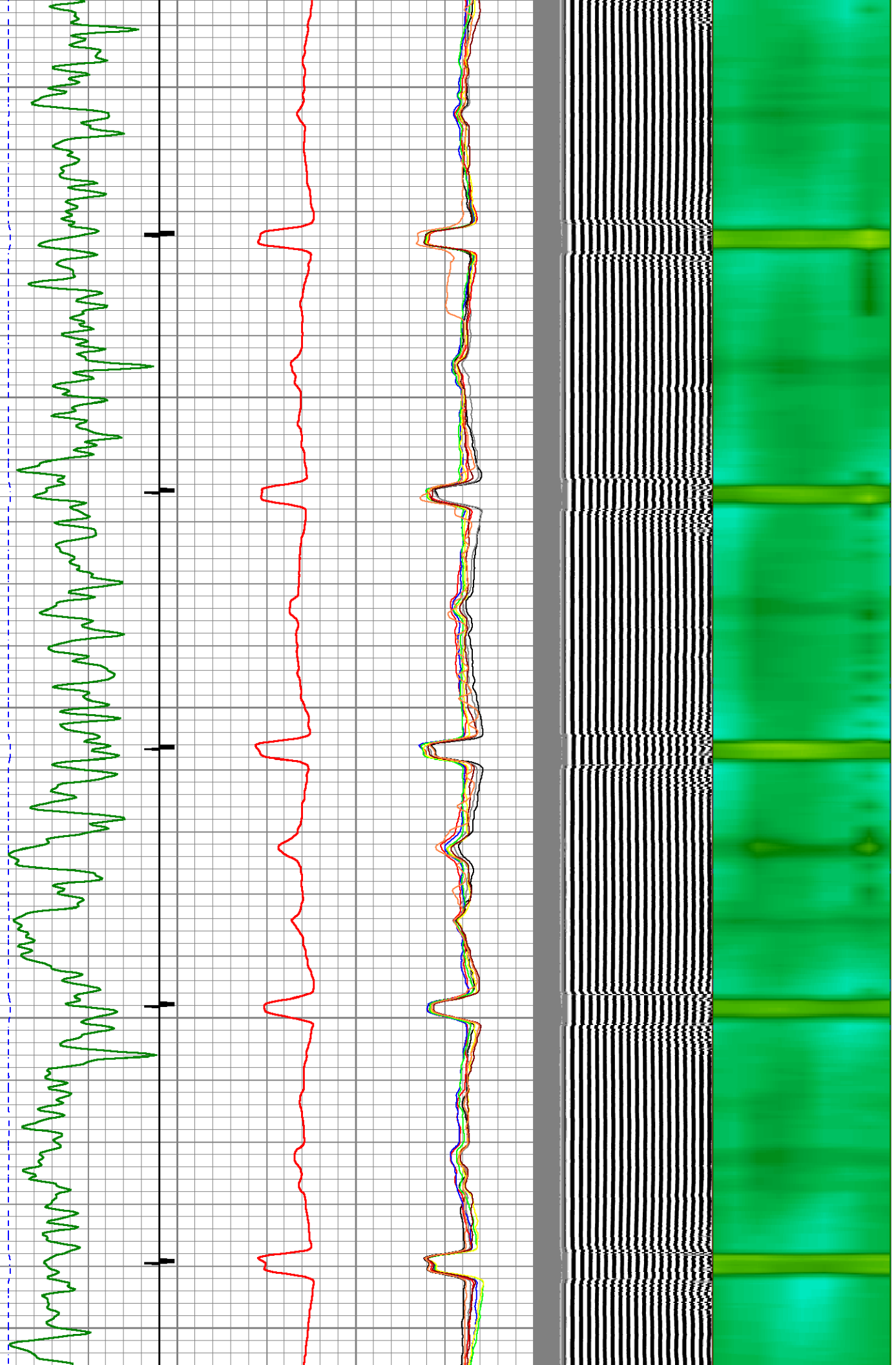
Database File civ--sears2-4-26_cbl.db
 Dataset Pathname cbl/main
 Presentation Format ips_rbtcolorcivitas2
 Dataset Creation Sat Jan 20 07:56:37 2024
 Charted by Depth in Foot scaled 1:240

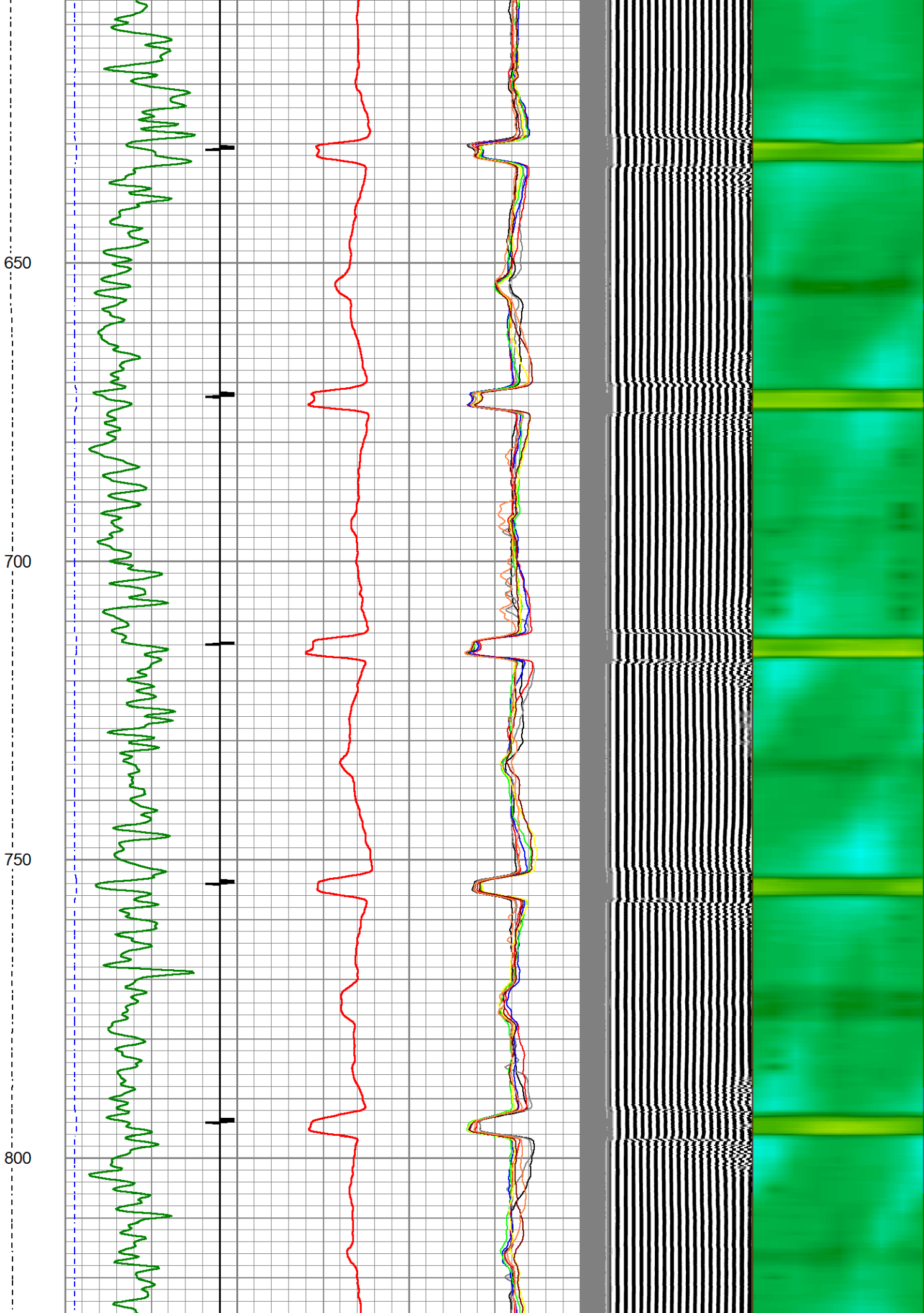
LSPD	200	TT (usec)	1000	0	AMP (mV)	100	0	AMPS1	100	200	VDL (usec)	1200	1	Cement Map	8
(ft/min)	-9	CCL	1	0	AMP3FT (mV)	20	0	AMPS2	100						
0	-250	0	GR (GAPI)	150				AMPS3	100						
		150	GR (GAPI)	400				AMPS4	100						
								AMPS5	100						
								AMPS6	100						
								AMPS7	100						
								AMPS8	100						

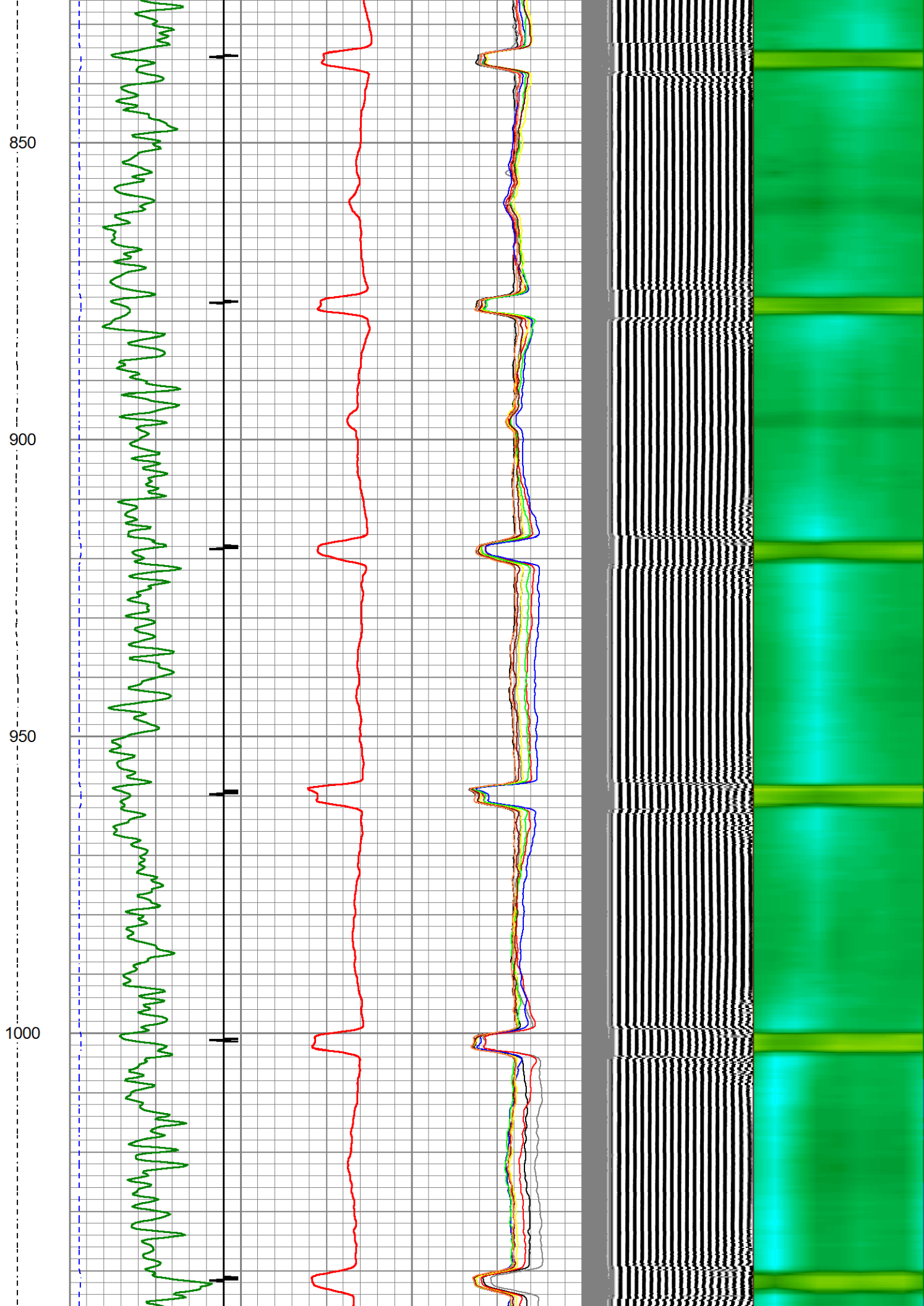


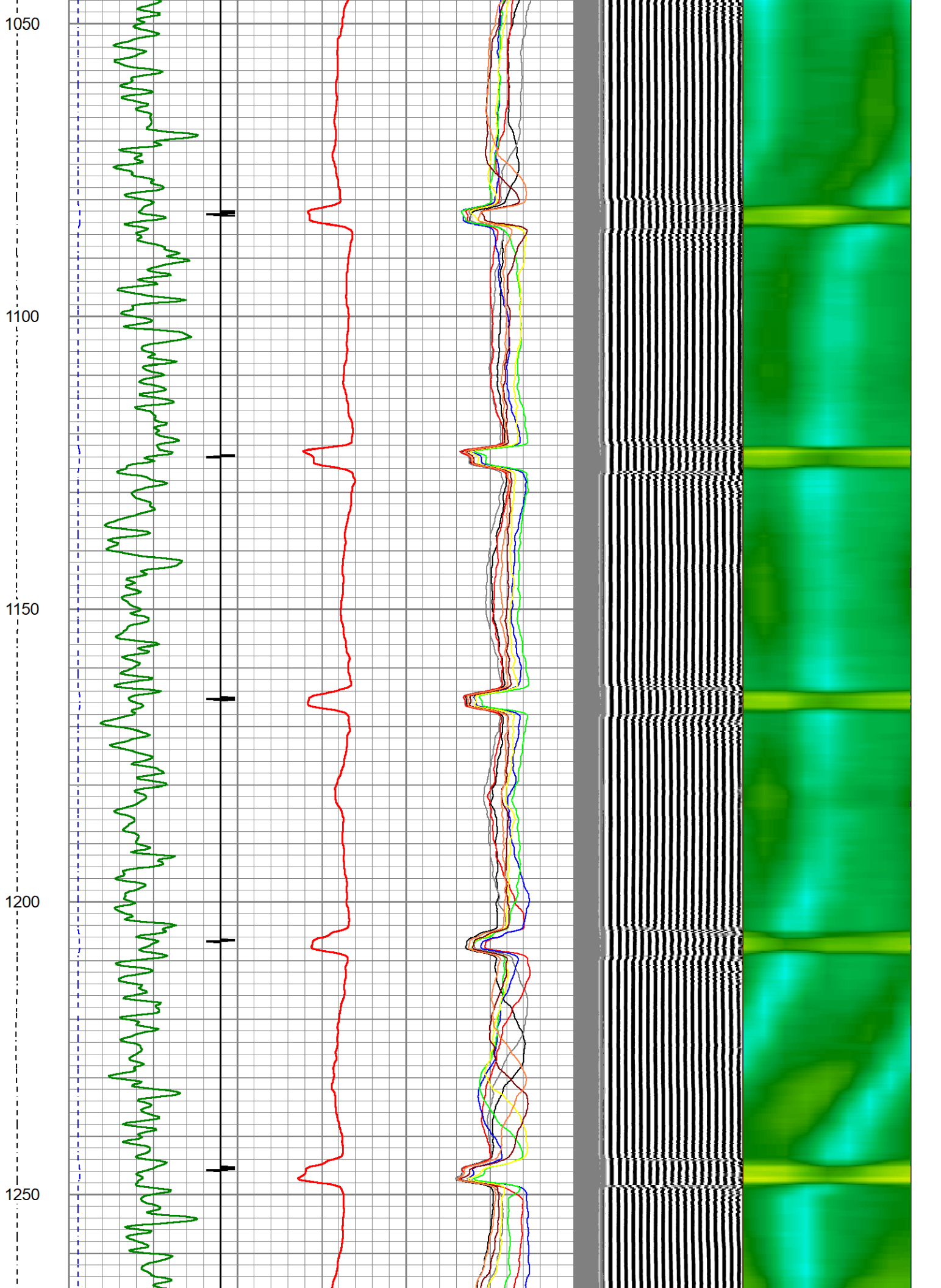


400
450
500
550
600







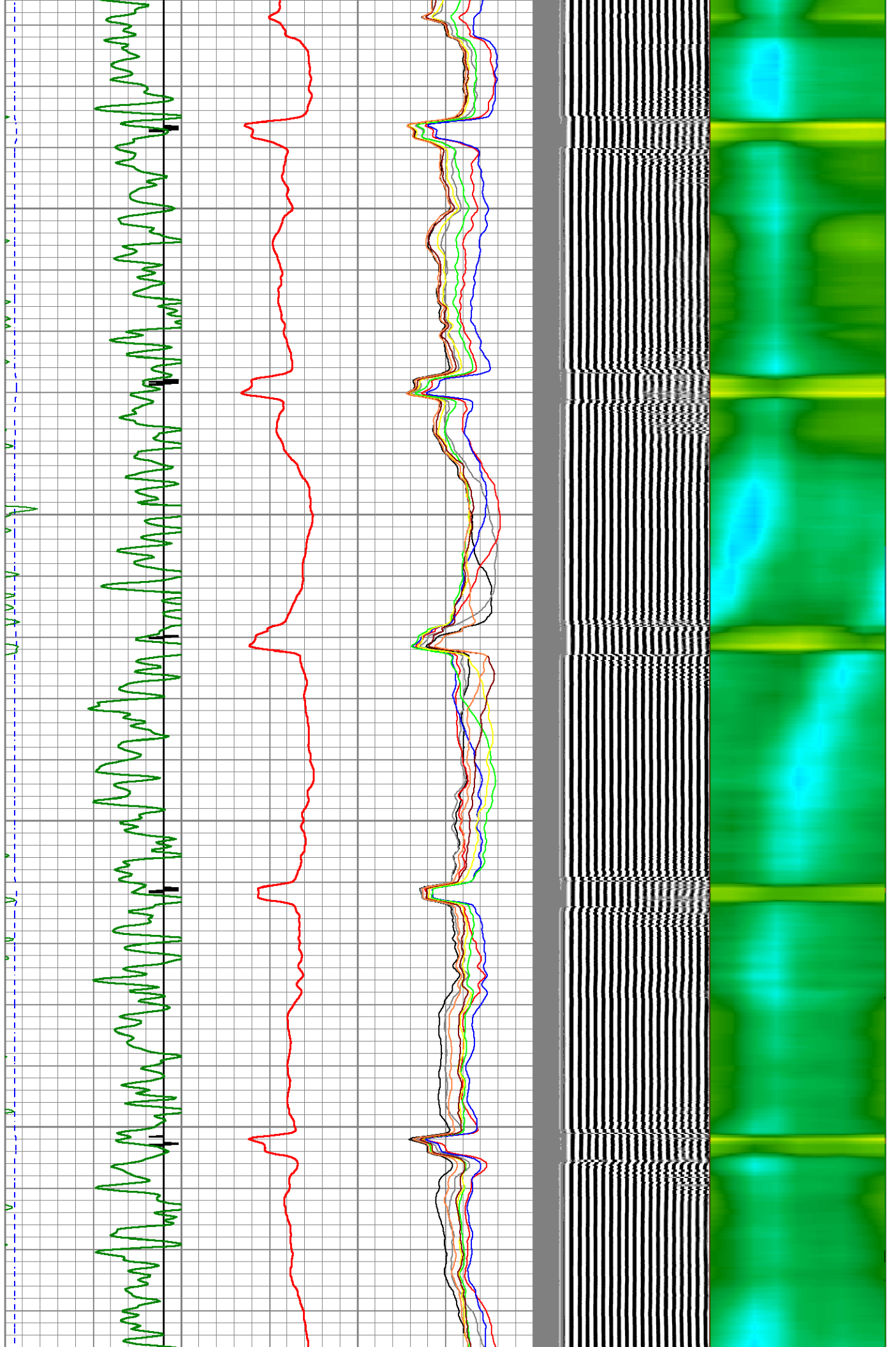


1300

1350

1400

1450



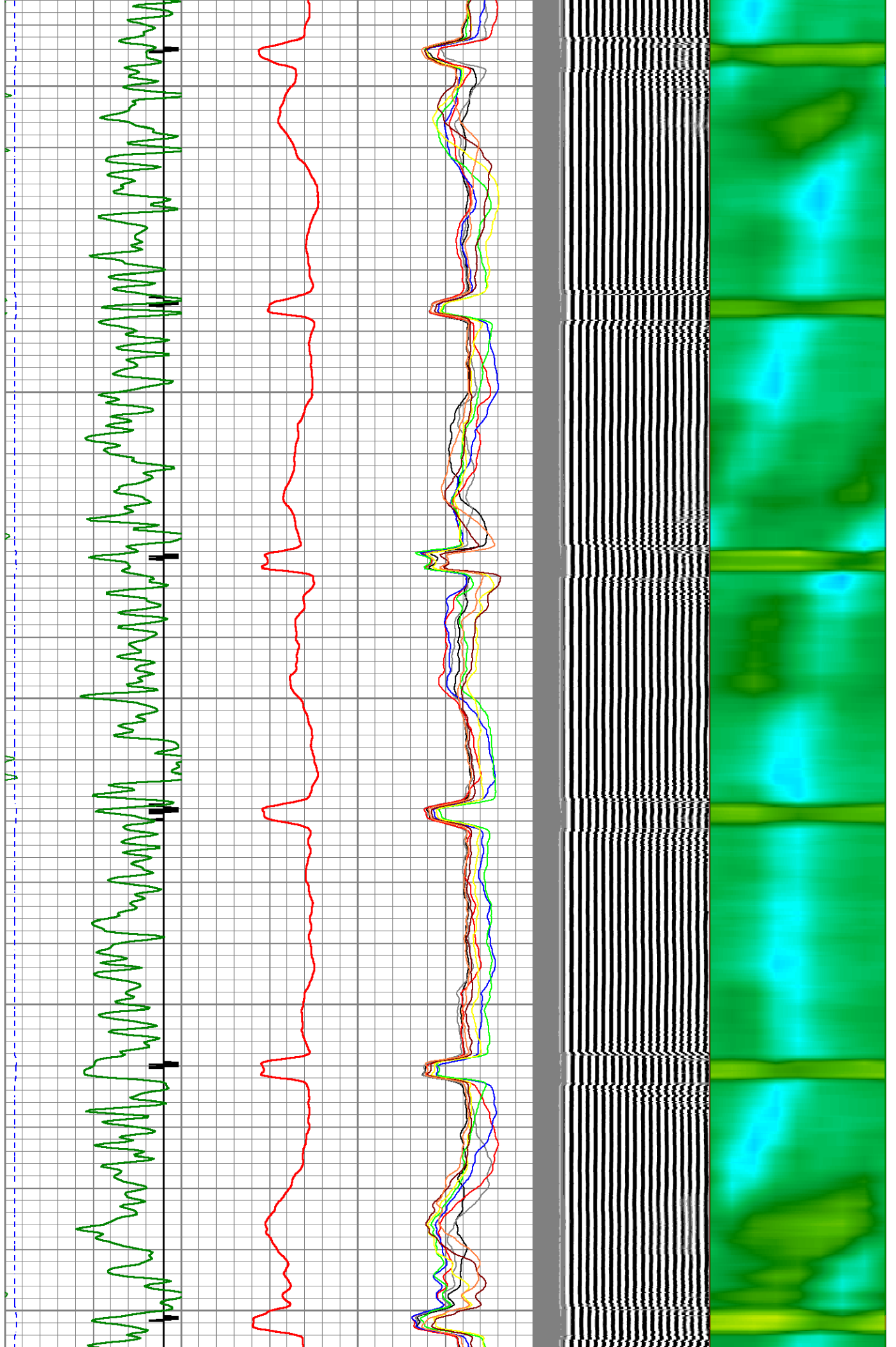
1500

1550

1600

1650

1700

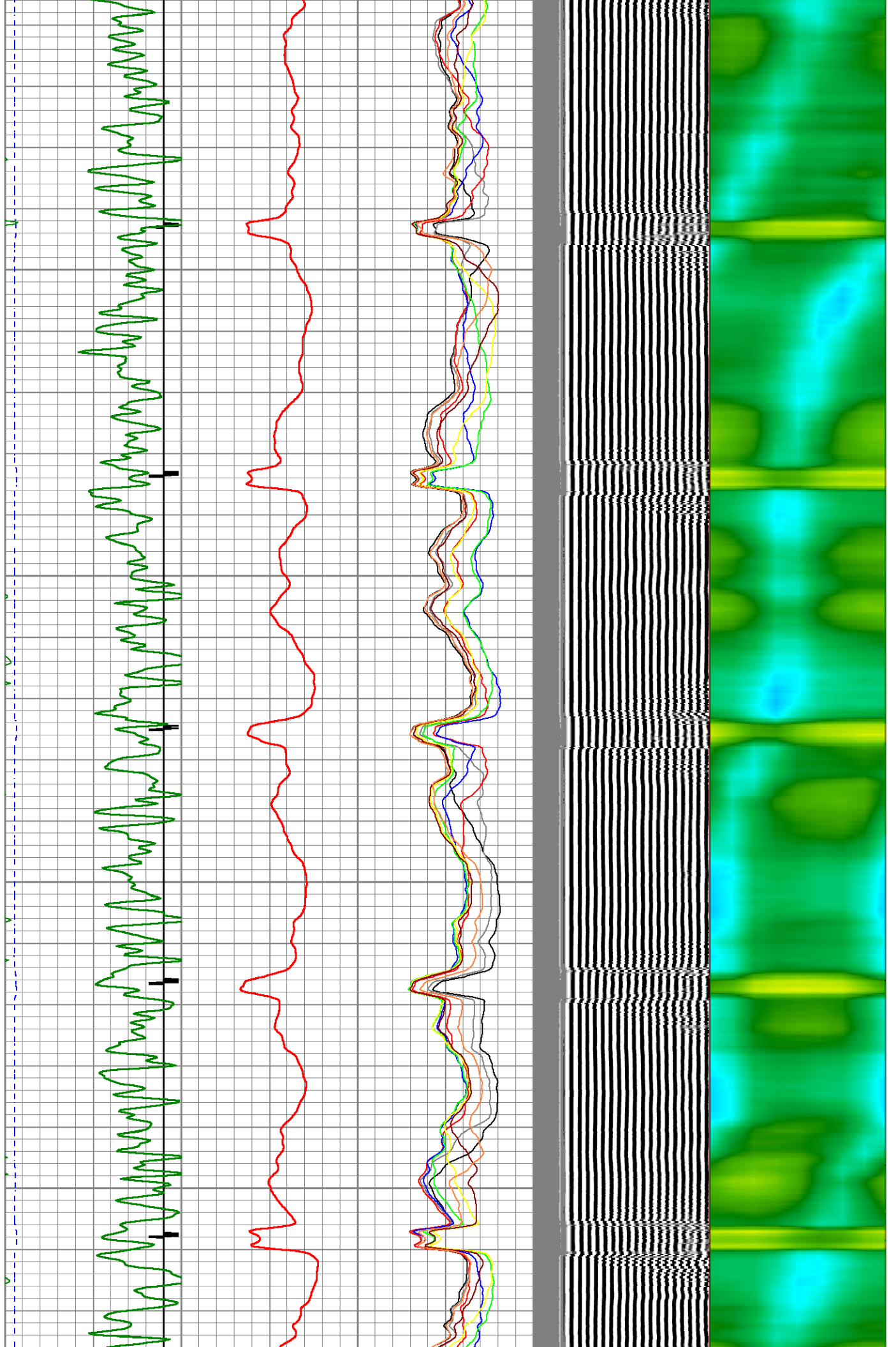


1750

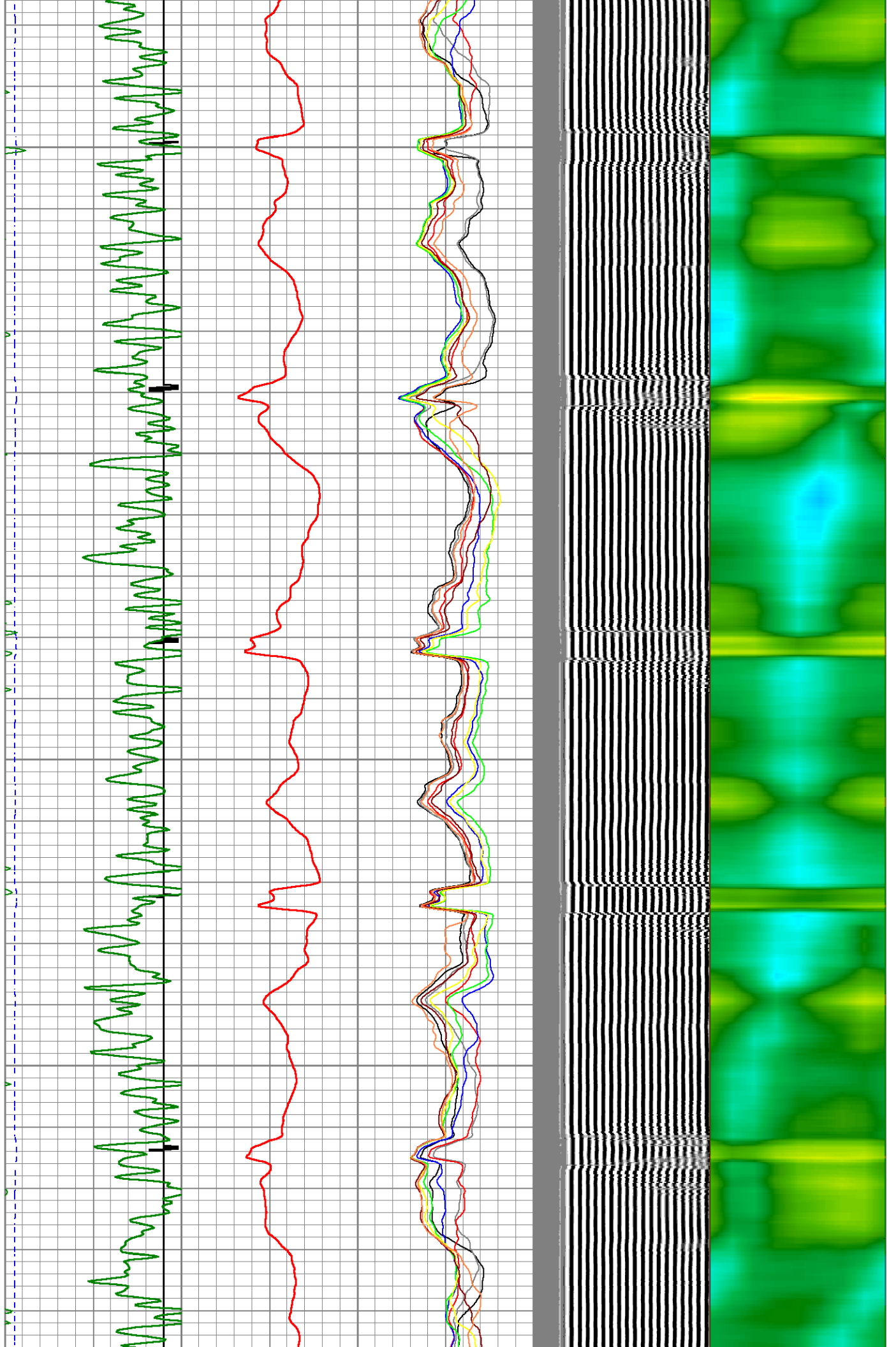
1800

1850

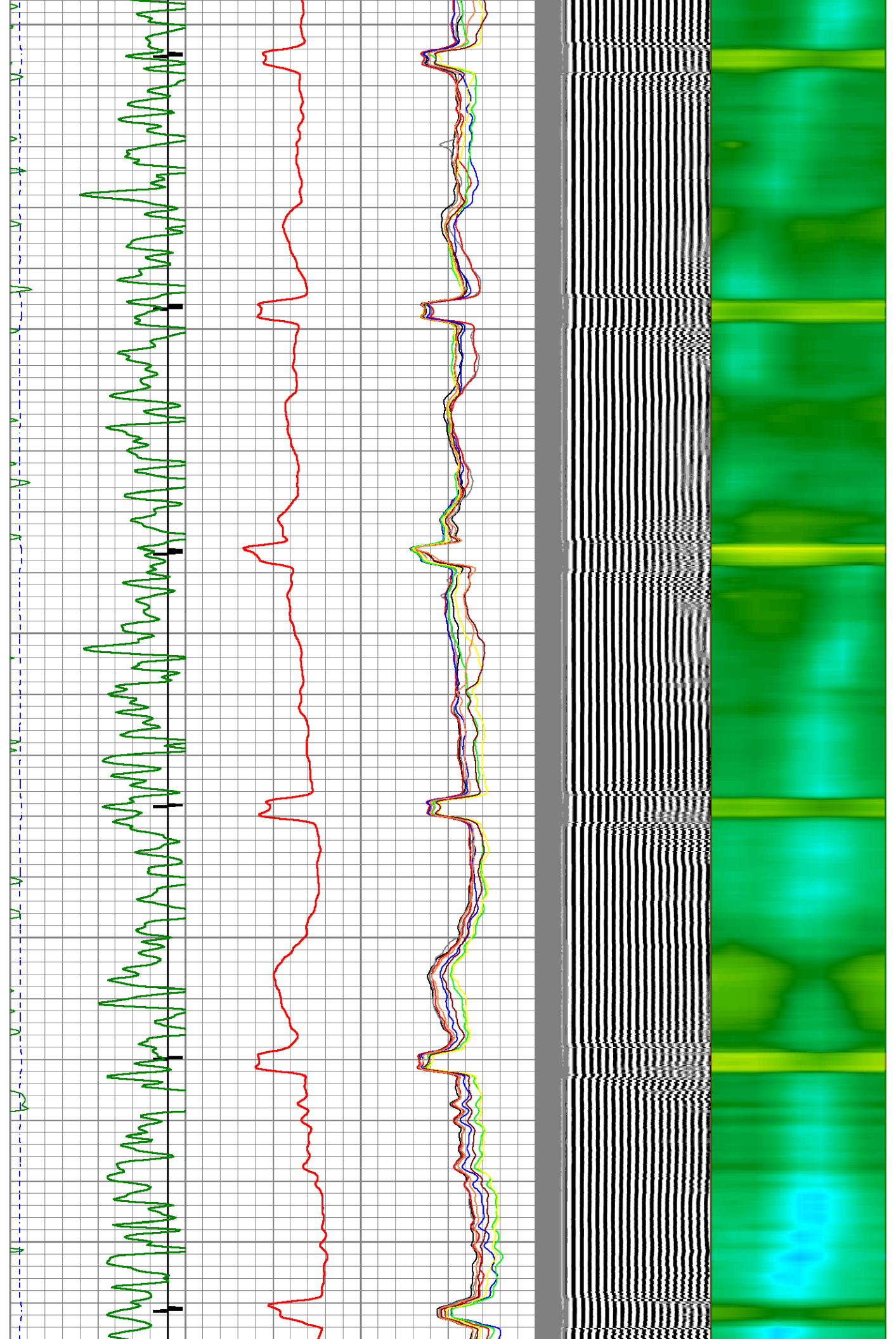
1900



1950
2000
2050
2100



2150
2200
2250
2300
2350

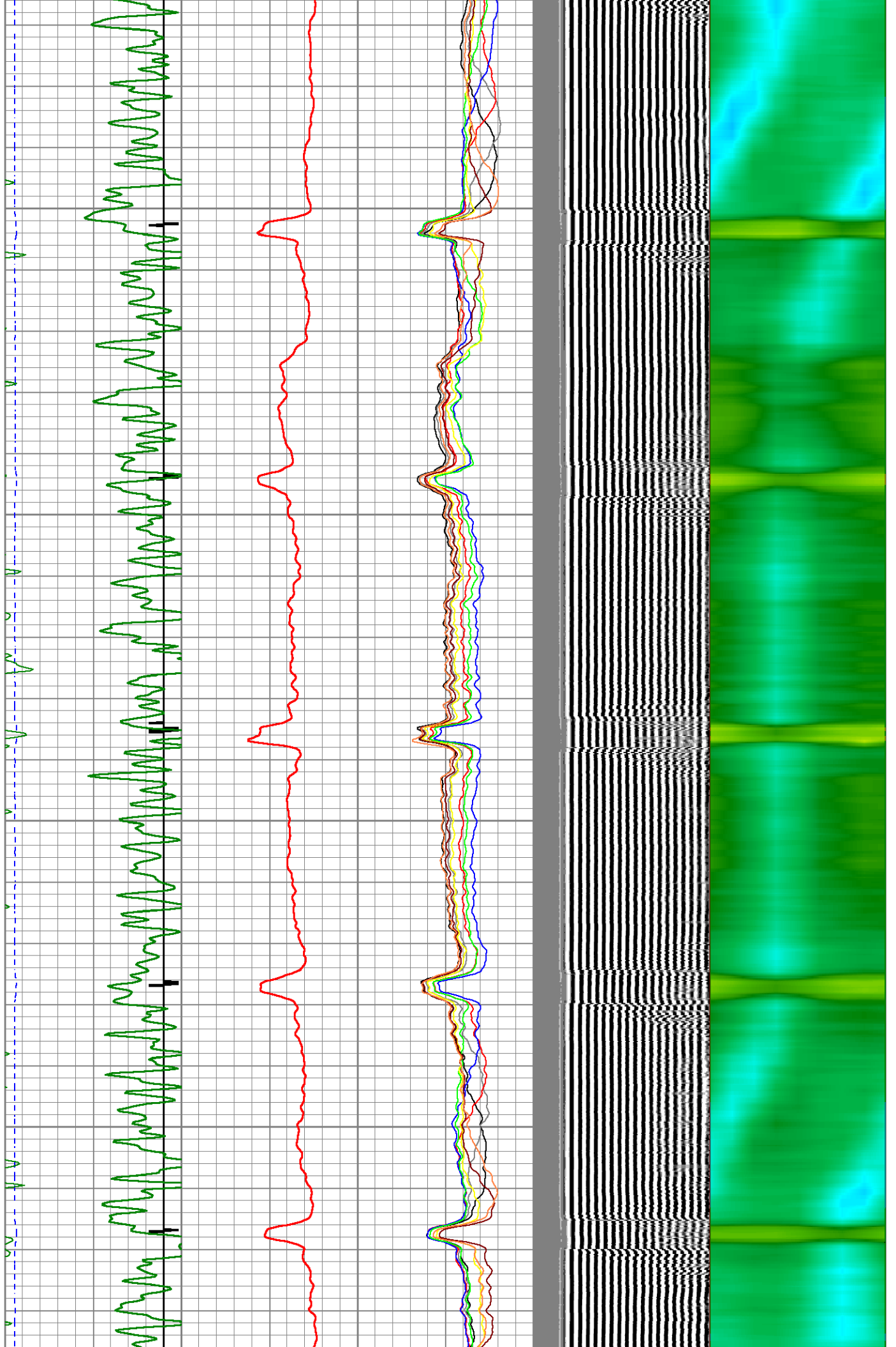


2400

2450

2500

2550



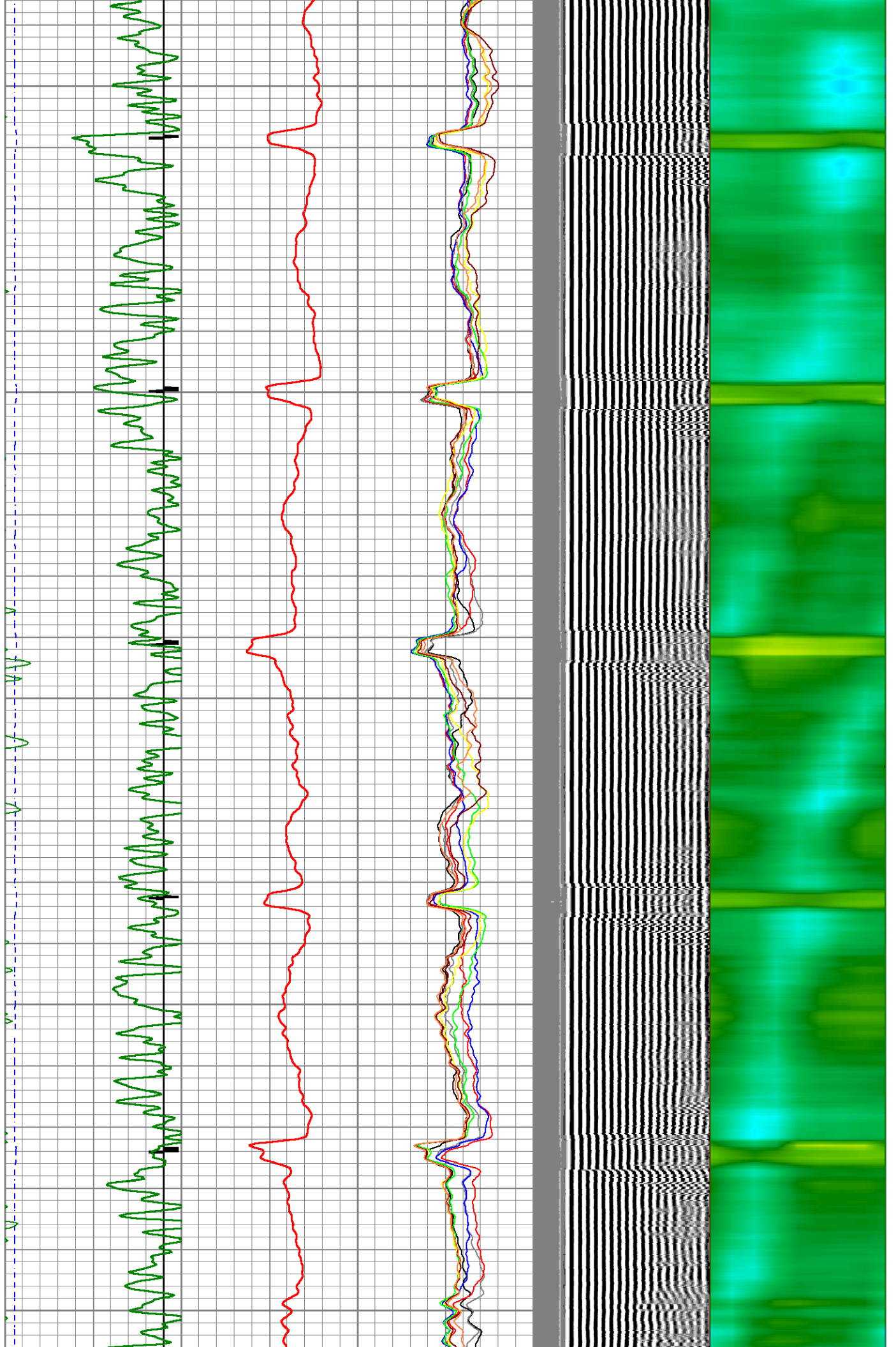
2600

2650

2700

2750

2800

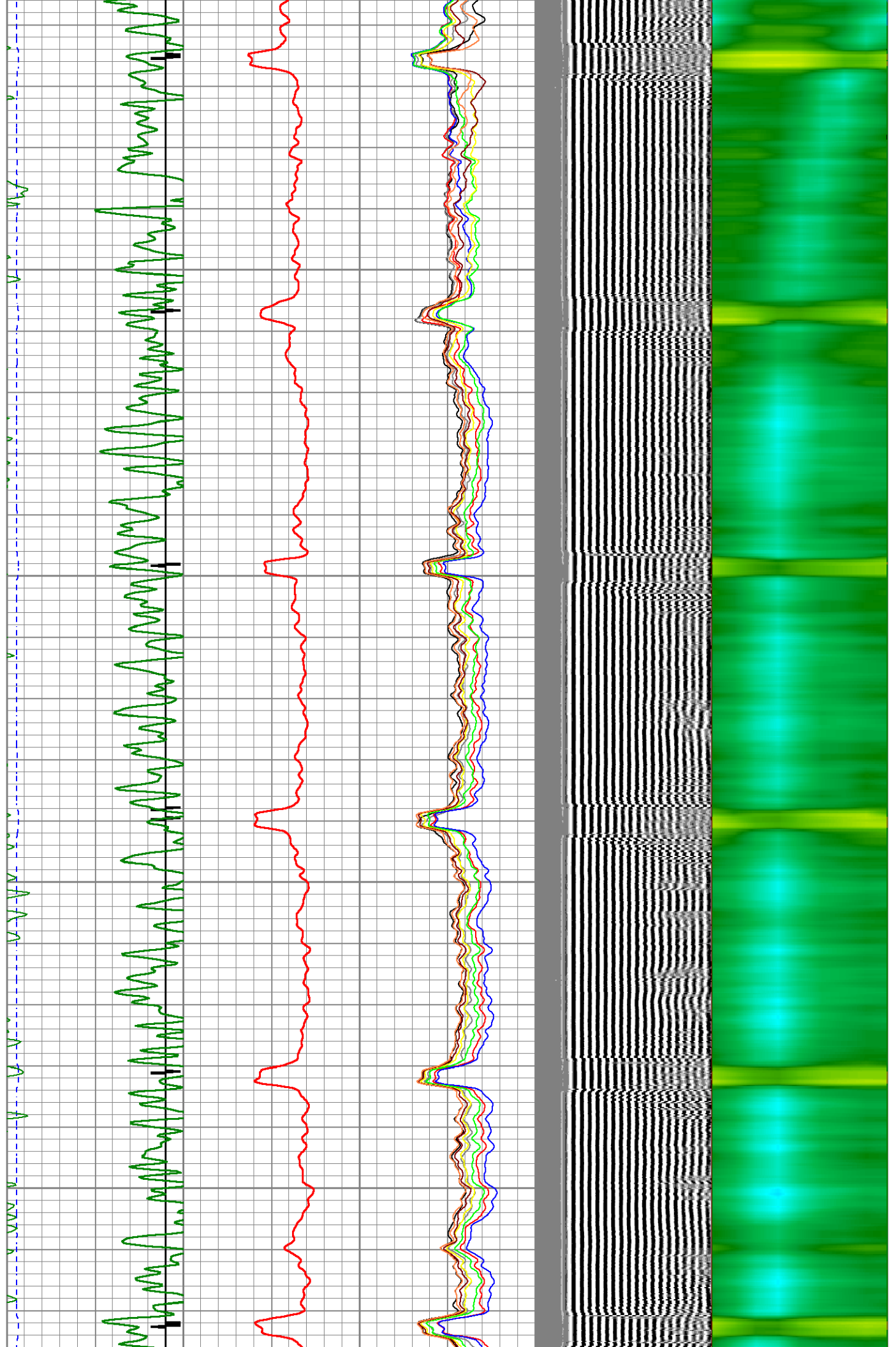


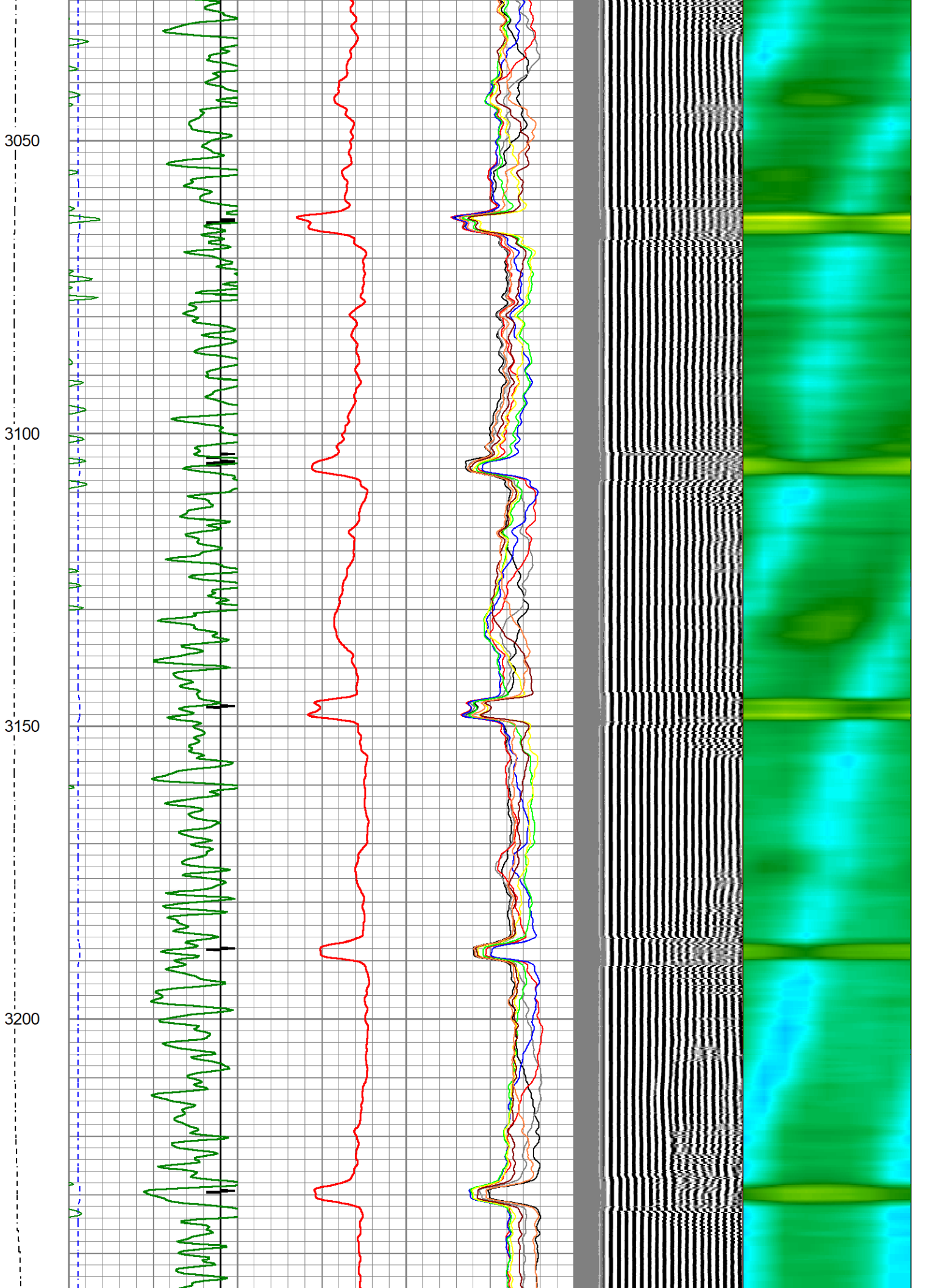
2850

2900

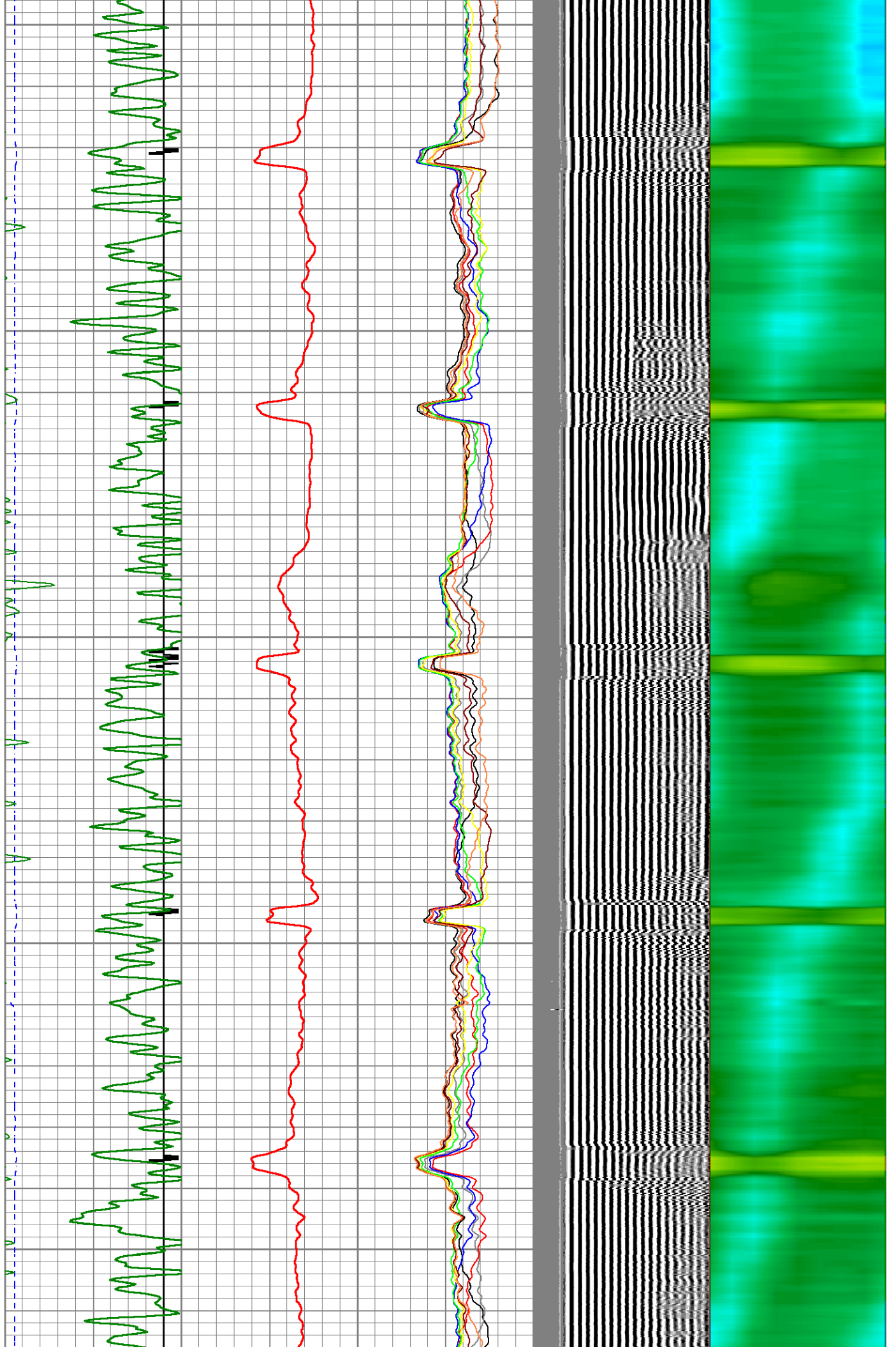
2950

3000





3250
3300
3350
3400
3450

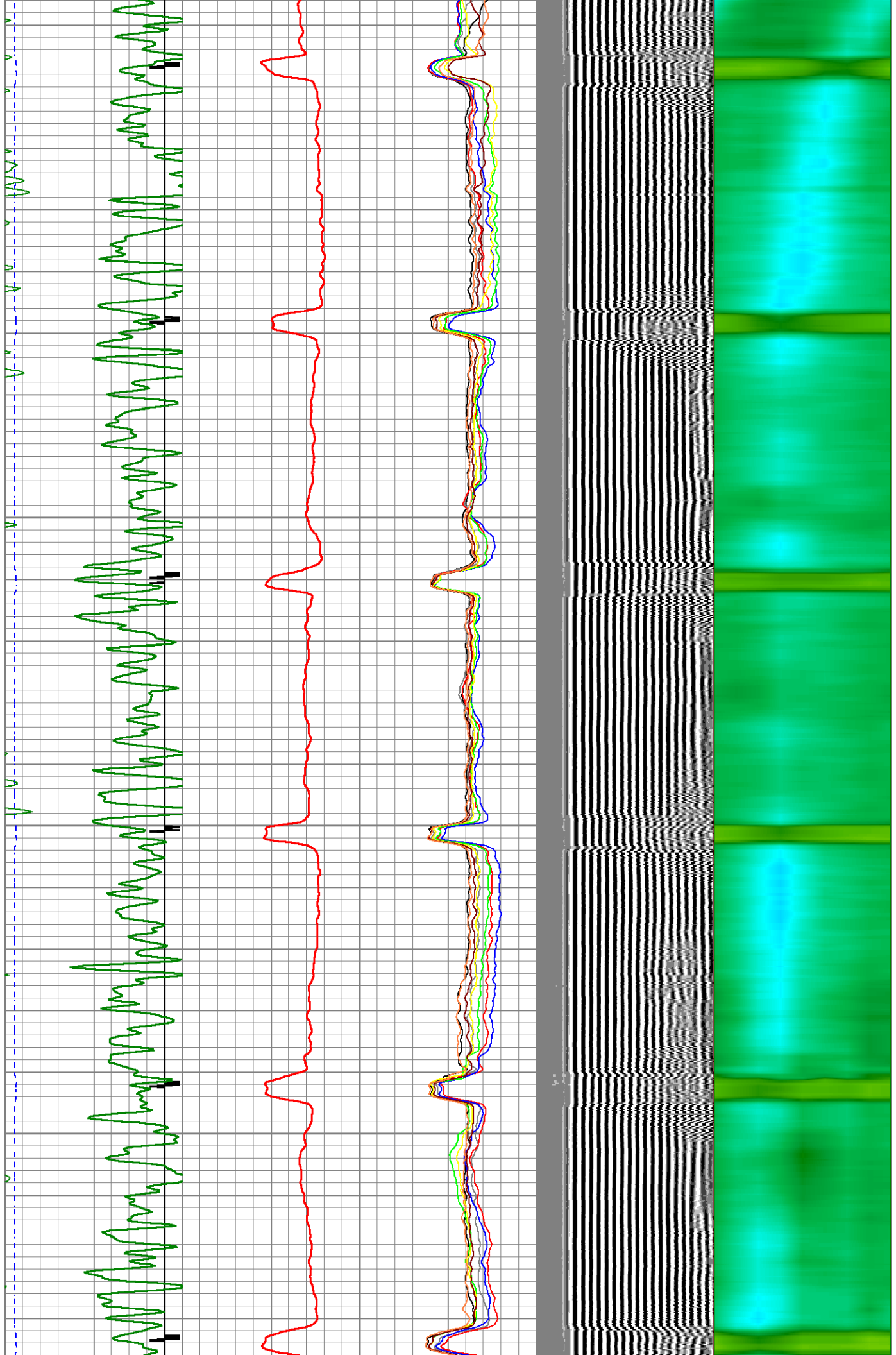


3500

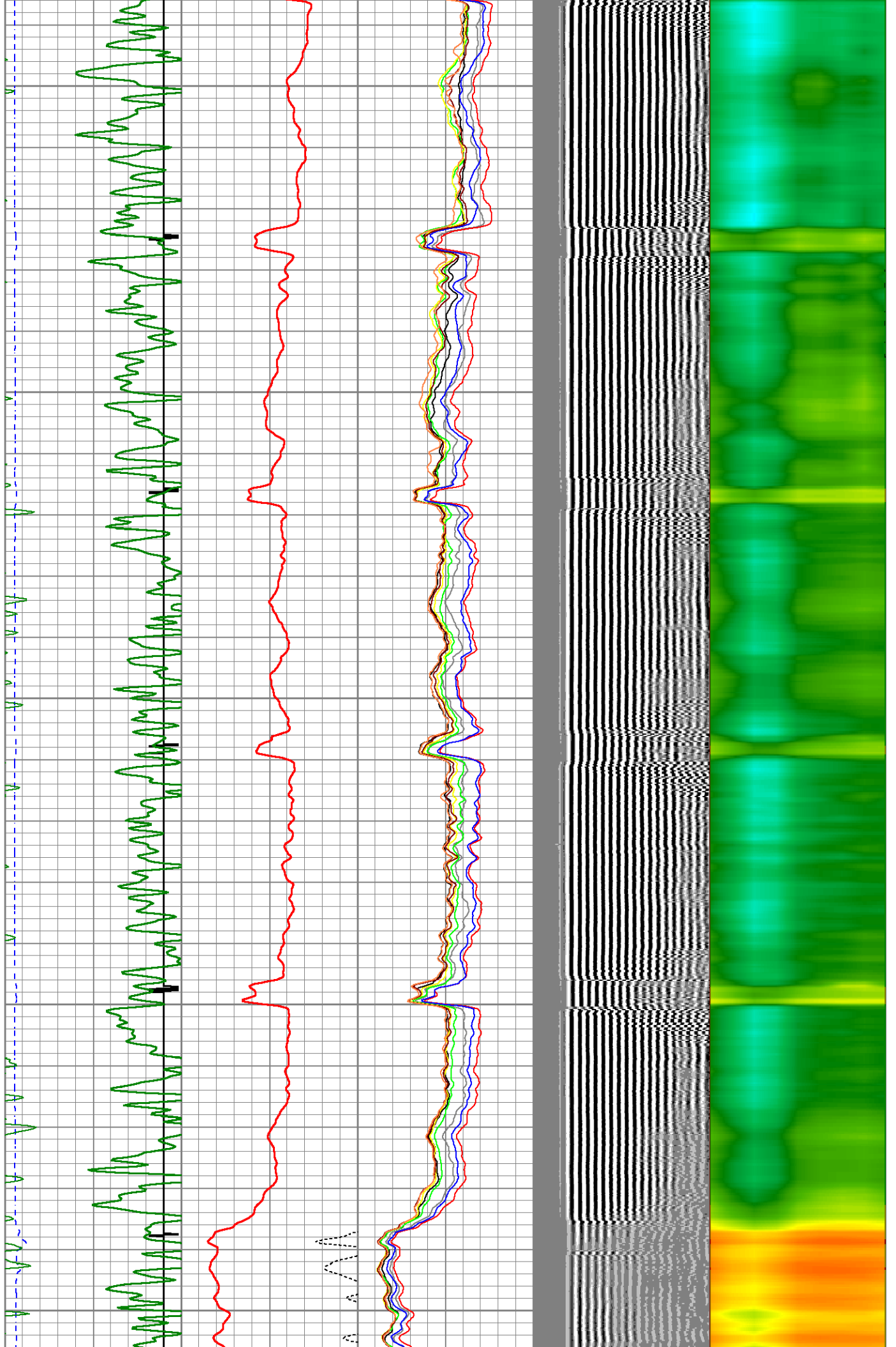
3550

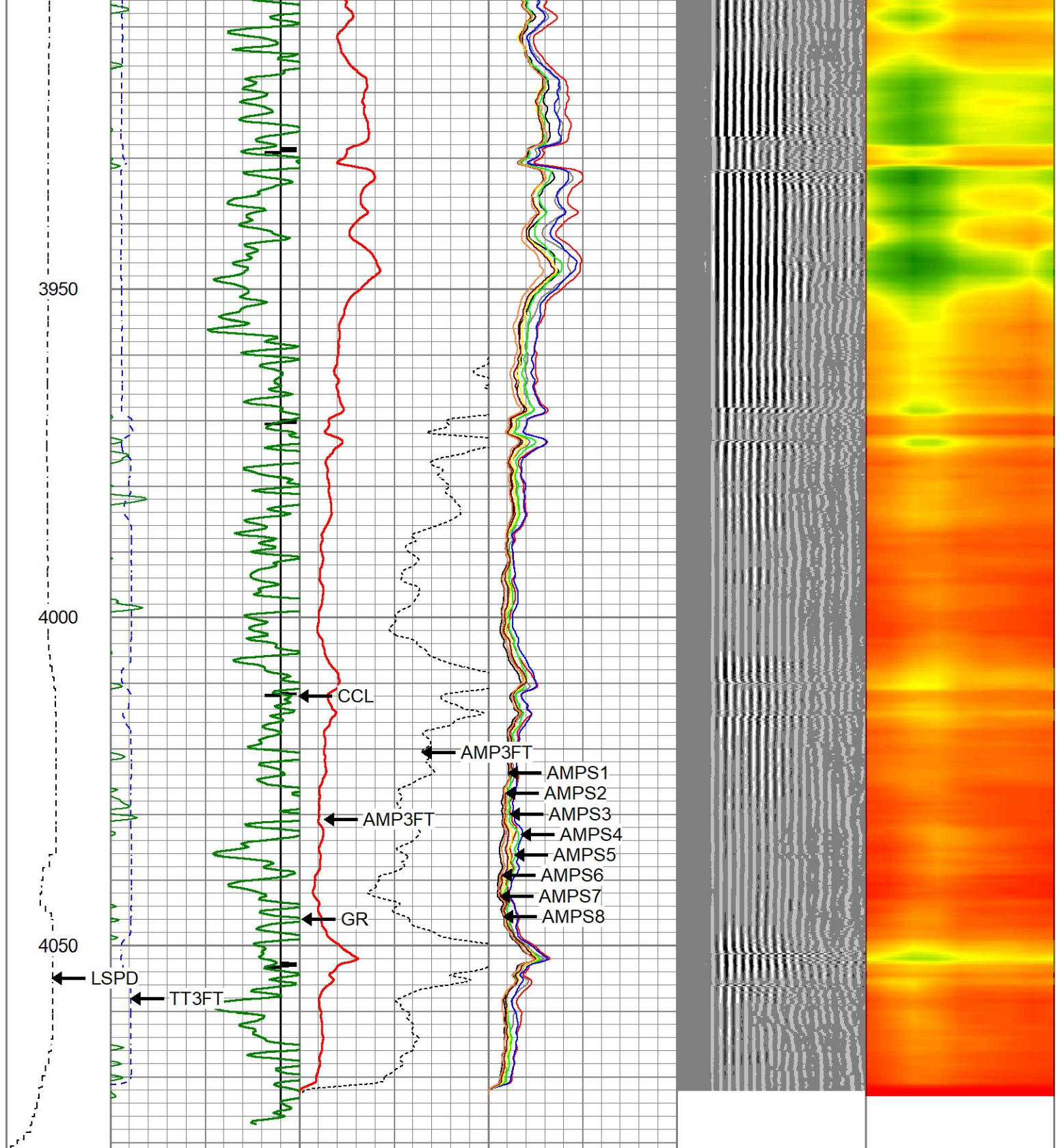
3600

3650



3700
3750
3800
3850
3900





LSPD	200	TT (usec)	1000	0	AMP (mV)	100	0	AMPS1	100	200	VDL (usec)	1200	1	Cement Map	8
(ft/min)	-9	CCL	1	0	AMP3FT (mV)	20	0	AMPS2	100						
0	-250	GR (GAPI)	150					AMPS3	100						
		150	GR (GAPI)	400				AMPS4	100						
								AMPS5	100						
								AMPS6	100						
								AMPS7	100						
								AMPS8	100						

Calibration Report

Database File civ--sears2-4-26_cbl.db
 Dataset Pathname cbl/main
 Dataset Creation Sat Jan 20 07:56:37 2024

Gamma Ray Calibration Report

Serial Number: 27GRL10-XXXX
 Tool Model: 27GRL10
 Performed: Tue Jul 25 16:17:25 2023

Calibrator Value: 1.0 GAPI

Background Reading: 0.0 cps
 Calibrator Reading: 1.0 cps

Sensitivity: 1.0000 GAPI/cps

Segmented Cement Bond Log Calibration Report

Serial Number: Greeley Ext Temp
 Tool Model: 27SBT10

Calibration Casing Diameter: 4.500 in
 Calibration Depth: 2986.450 ft

Master Calibration, performed (Derived):

	Raw (v)		Calibrated (mv)		Results	
	Zero	Cal	Zero	Cal	Gain	Offset
3'	-0.009	0.737	0.250	81.196	108.574	1.196
CAL	1.114	1.006				
5'	-0.049	0.601	0.250	81.196	124.430	6.370
SUM						
S1	-0.076	0.799	0.000	81.196	92.820	7.047
S2	-0.007	0.814	0.000	81.196	98.898	0.723
S3	-0.008	0.815	0.000	81.196	98.675	0.780
S4	-0.007	0.831	0.000	81.196	96.903	0.694
S5	-0.008	0.854	0.000	81.196	94.130	0.785
S6	-0.044	0.816	0.000	81.196	94.385	4.193
S7	-0.008	0.856	0.000	81.196	94.012	0.724
S8	-0.008	0.873	0.000	81.196	92.180	0.713

Internal Reference Calibration, performed Thu Mar 10 14:36:00 2022:

	Raw (v)		Calibrated (v)		Results	
	Zero	Cal	Zero	Cal	Gain	Offset
CAL	0.000	0.000	1.114	1.006	1.000	0.000

Air Zero Calibration, performed Sat Jan 20 06:55:30 2024:

	Raw (v)		Calibrated (v)		Results	
	Zero		Zero		Offset	
3'	0.009		0.000			-0.009
5'	0.008		0.000			-0.049
SUM						
S1	0.006		0.000			-0.076
S2	0.007		0.000			-0.007
S3	0.008		0.000			-0.008

S3	0.008	0.000	0.000
S4	0.007	0.000	-0.007
S5	0.008	0.000	-0.008
S6	0.008	0.000	-0.044
S7	0.008	0.000	-0.008
S8	0.008	0.000	-0.008



Company	CIVITAS		
Well	SEARS 02-04-26		
Field	WATTENBURG		
County	BROOMFIELD		
State	CO	Country	USA