

Final Reclamation Inspection

February 26, 2024

Operator: CRESTONE PEAK RESOURCES OPERATING LLC - 10633

Location ID: 335860

Inspection Document #: 697505156

Broomfield County, CO

Chris Binschus
Reclamation Specialist, ECMC



COLORADO

**Energy & Carbon Management
Commission**

Department of Natural Resources

Inspection Photos
Location Name: BICKLER-61N68W 34NESW
Location ID: 335860

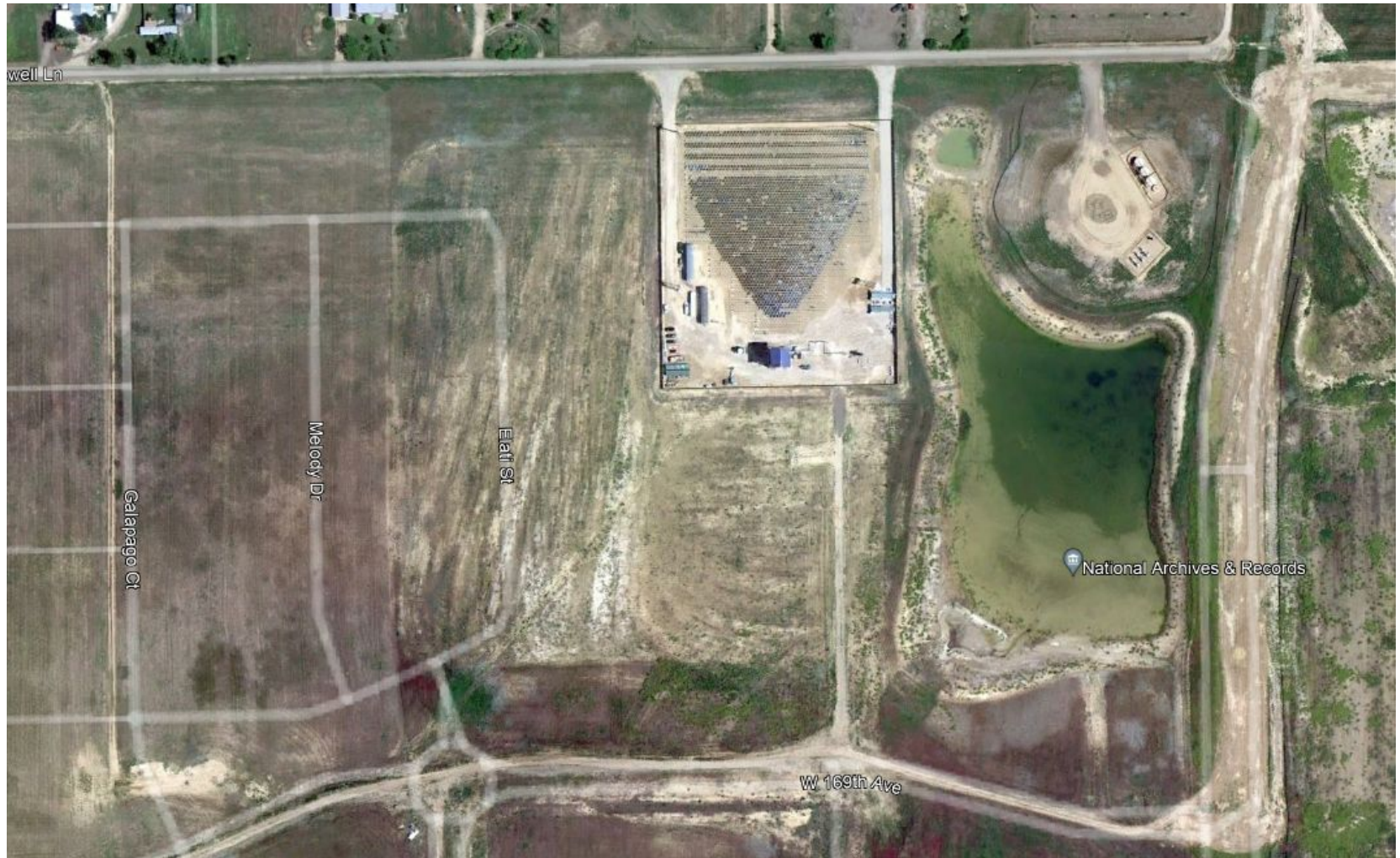


Photo 1. Google Earth aerial imagery from 6/15/2010 during active operations prior to the land use change.

Inspection Photos
Location Name: BICKLER-61N68W 34NESW
Location ID: 335860

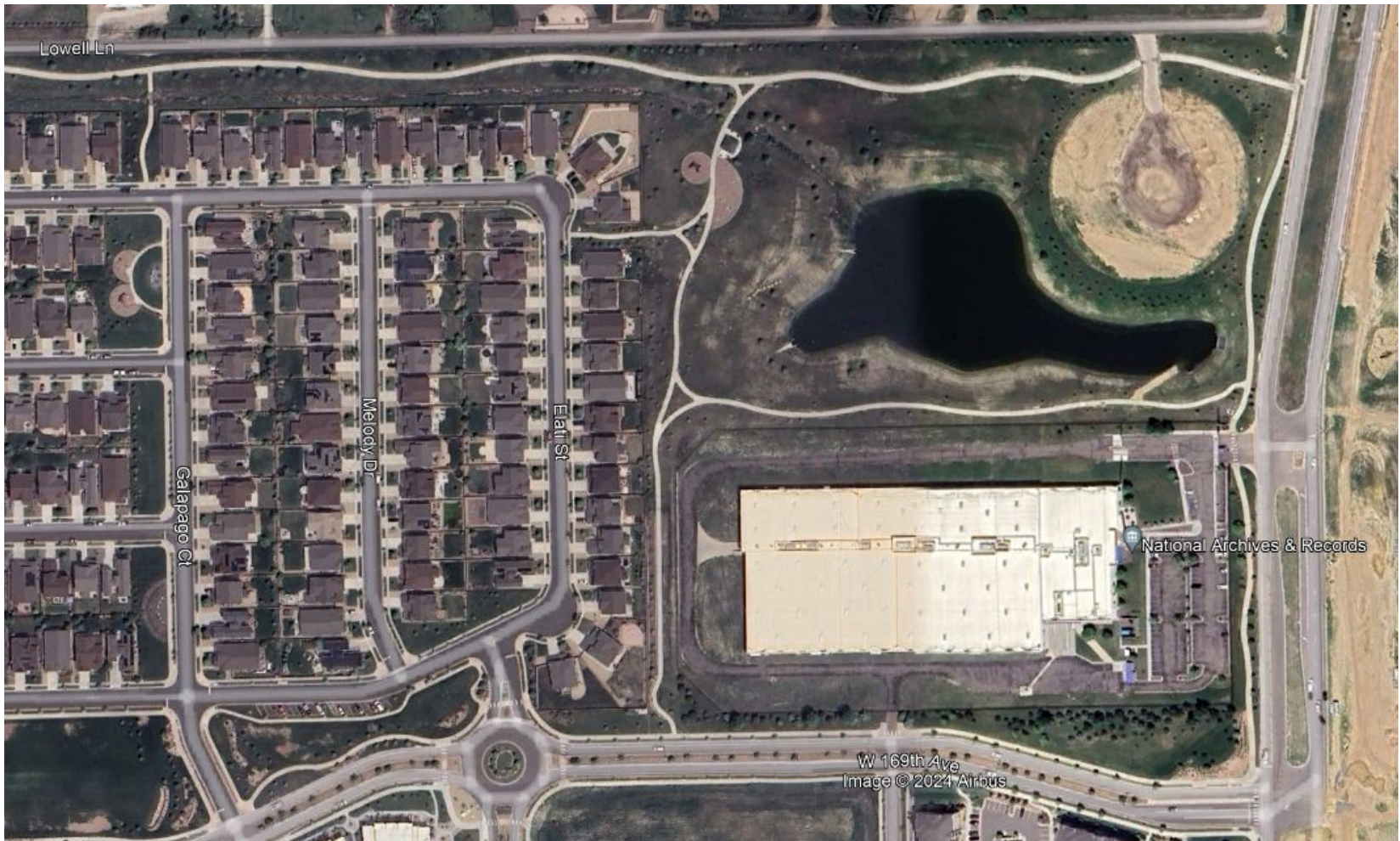


Photo 2. Google Earth aerial imagery from 5/24/2023 post plugging and abandonment operations. Imagery illustrates the land use change to the Palisade Park.

Inspection Photos
Location Name: BICKLER-61N68W 34NESW
Location ID: 335860



Photo 3. Photo taken from the location, facing East. Photo illustrates all equipment has been removed. There were no weed or stormwater issues observed.



Photo 4. Photo taken from the location, facing South. See comments under Photo 3.



Inspection Photos

Location Name: BICKLER-61N68W 34NESW

Location ID: 335860



Photo 5. Photo taken from the location, facing West. See comments under Photo 3.



Photo 6. Photo taken from the location, facing North. See comments under Photo 3.