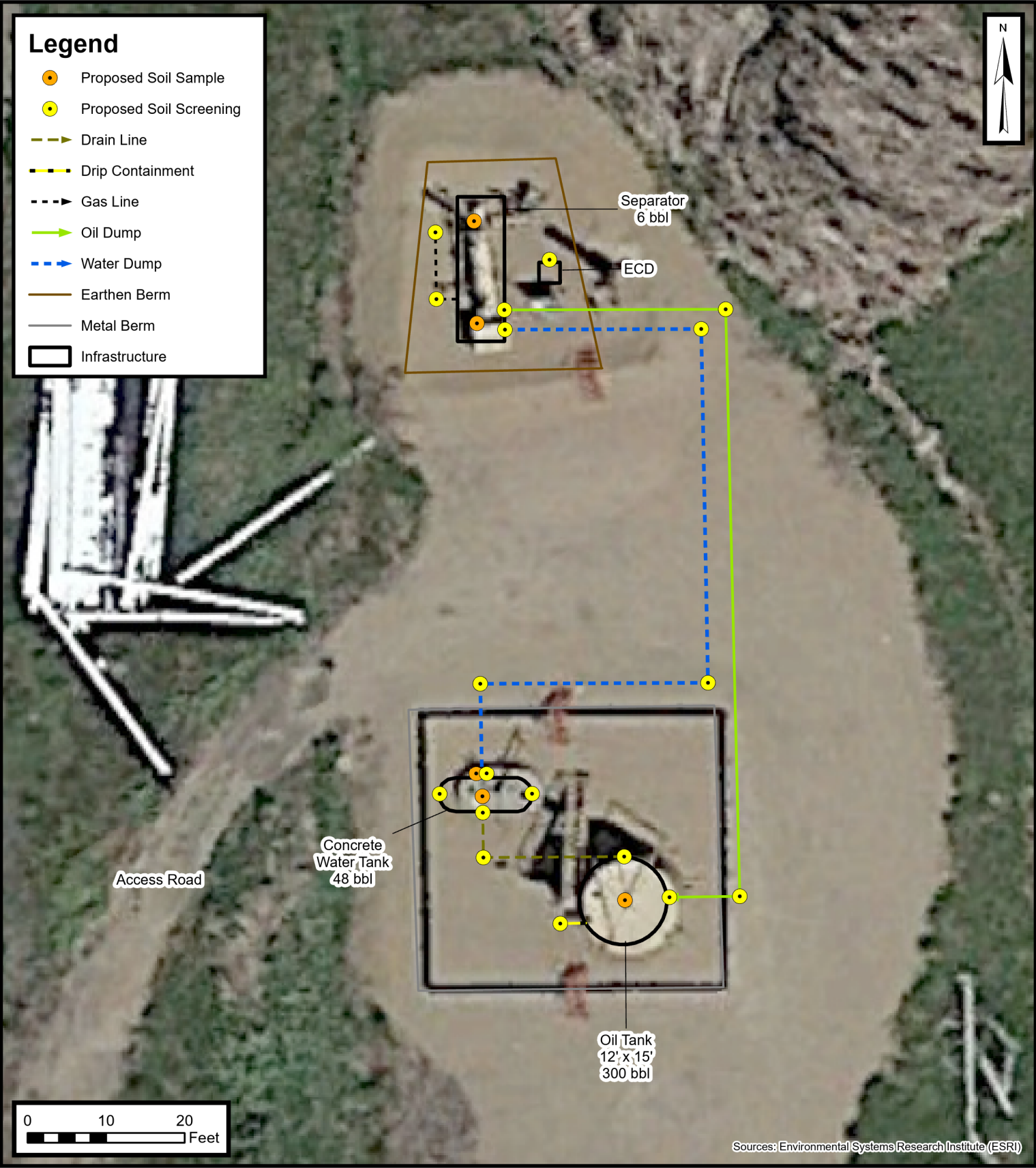


Legend

- Proposed Soil Sample
- Proposed Soil Screening
- Drain Line
- Drip Containment
- - - Gas Line
- Oil Dump
- Water Dump
- Earthen Berm
- Metal Berm
- Infrastructure



Default Folder: C:\Users\Wyatt Buckner\OneDrive - ENSOLUM, LLC\Ensolium GIS0 - Projects\Kerr-McGee Oil & Gas Onshore - LP\09A1417648 - GNB W 31-3,4,5J,6 Facility



**Proposed Facility Closure and
Soil Sampling Locations Map**
GNB W 31-3,4,5J,6 Facility
Kerr-McGee Oil & Gas Onshore, LP
NWNW SEC 31-T2N-R66W
Weld County, CO

Project Number: 09A1417648

**FIGURE
2**