

Final Reclamation Inspection

February 26, 2024

Operator: KP KAUFFMAN COMPANY INC - 46290

Well API: 123-23791

Inspection Document #: 697505138

Weld County, CO

Chris Binschus
Reclamation Specialist, ECMC



COLORADO

**Energy & Carbon Management
Commission**

Department of Natural Resources

Inspection Photos
Location Name: WOOLLEY #42-7
Well API: 123-23791

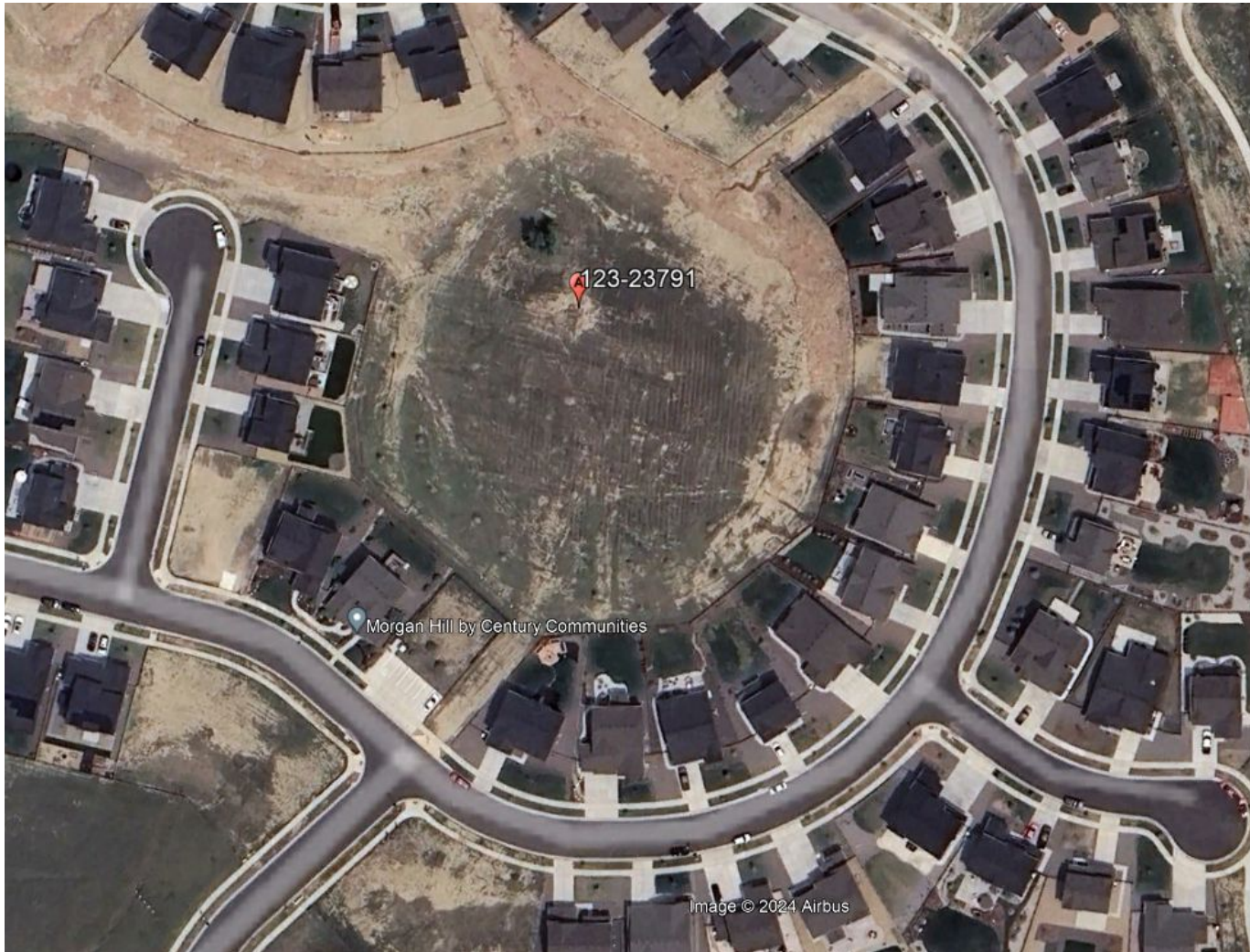


Photo 1. Google Earth aerial imagery taken 5/22/2023 illustrating the well location in relation to housing development land use change.



Inspection Photos
Location Name: WOOLLEY #42-7
Well API: 123-23791



Photo 2. Photo taken from the well location, facing North. Photo illustrates location is within a land use change to housing development. All equipment has been removed. There were no weed or stormwater issues observed.



Photo 3. Photo taken from the well location, facing East. See comments under Photo 2.

Inspection Photos
Location Name: WOOLLEY #42-7
Well API: 123-23791



Photo 4. Photo taken from the well location, facing South. See comments under Photo 2.



Photo 5. Photo taken from the well location, facing West. See comments under Photo 2.