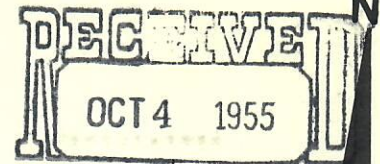


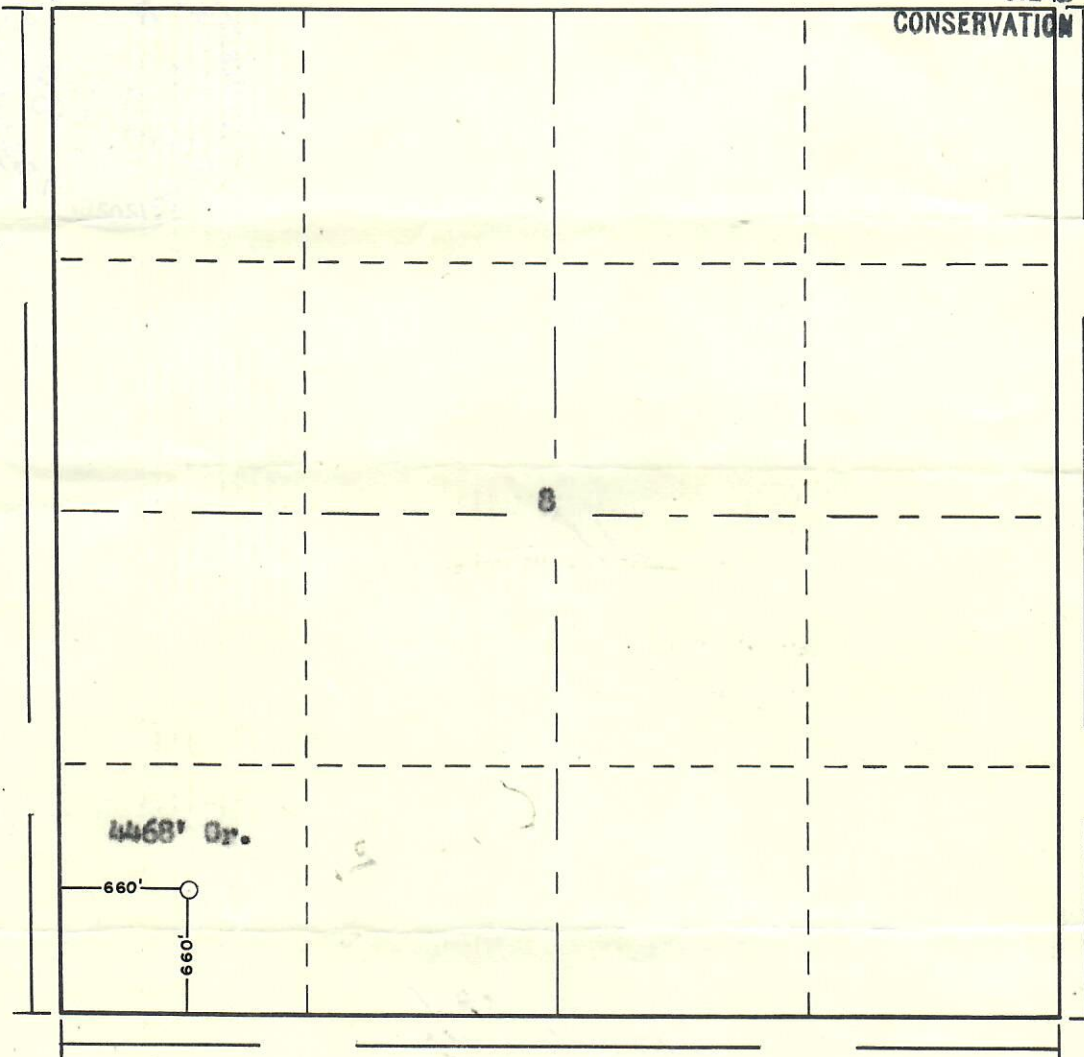


99999999

121-0704  
R. 54 W.



OIL & GAS  
CONSERVATION COMMISSION



Scale ... 1" = 1000'

Powers Elevation Company of Casper, Wyoming  
has in accordance with a request from Mr. Squires  
for Davis Oil Company determined the  
Location of #1 M. Mitchell  
to be C SW SW Section 8 Township 2 North,  
Range 54 West 6th Principal Meridian  
Washington County, Colorado.

The above Plat shows the location of the well site  
in said section.



00599629

Powers Elevation Company

by: *Burr Liebert*

Registered Land Surveyor

Date: 9-30-55

