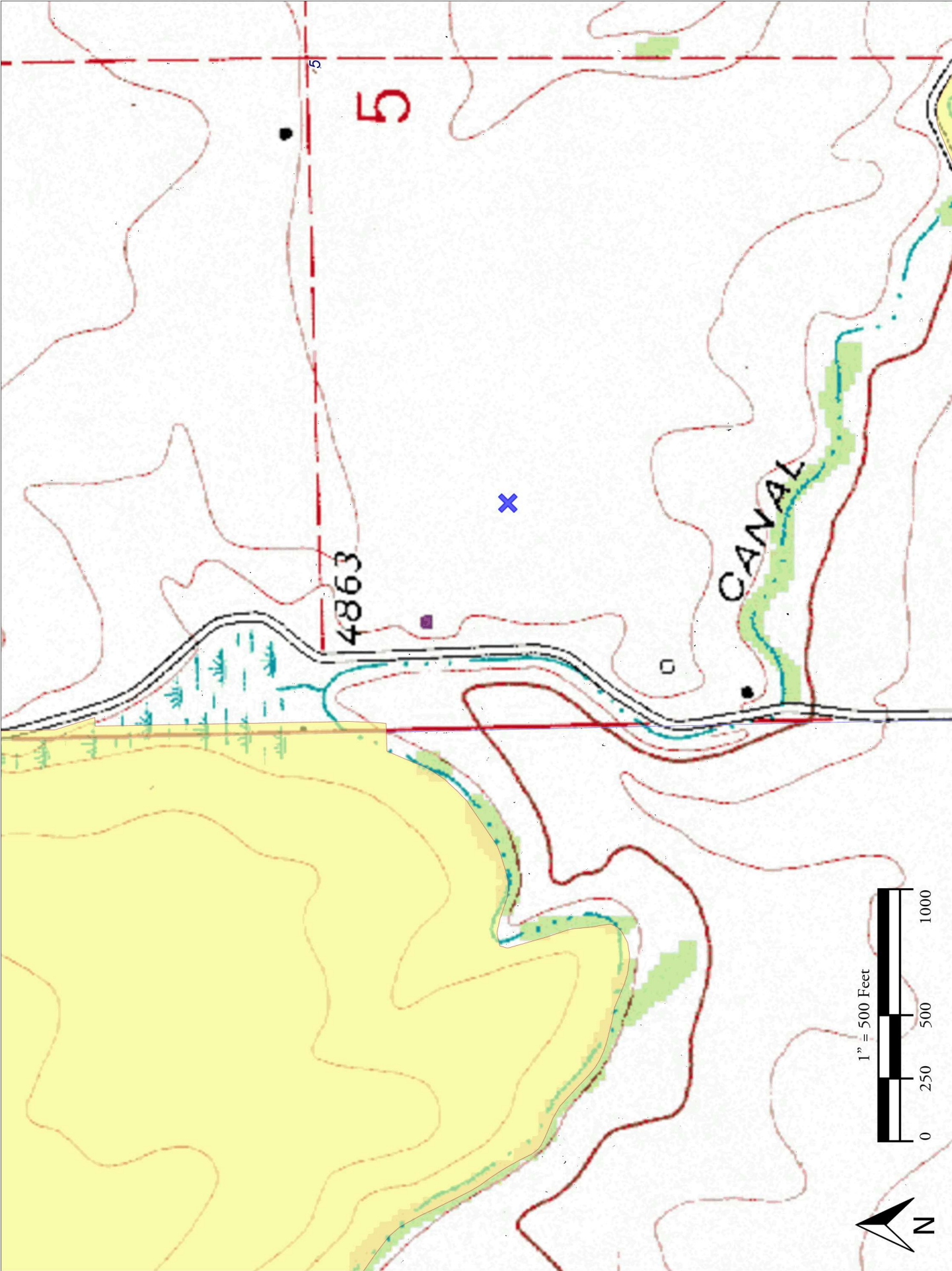



Topo Map

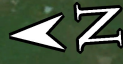


Mickey 5-F

Legend

 Recent Spill

Recent Spill



400 ft





SE

120

150

180

210

S

☉ 161°SE (T) ☉ 40.51576, -104.92394 ±12ft ▲ 4824ft

EXTRACTION

Oil & Gas

Emergency Number: 720.370.5540

Facility Utilizing Non-Emitting Pneumatics

MICKEY PAD

**SWNE SEC 5 T6N R67W
WELD COUNTY, CO**

MICKEY 1	MICKEY 6	MICKEY 10
MICKEY 2	MICKEY 7	MICKEY 11
MICKEY 3	MICKEY 8	MICKEY 12
MICKEY 4	MICKEY 9	MICKEY 13

**CR 15 & 72, N 3/4MILE, SE .2 M, E .1 SOUTH INTO
LAT 40.516397, LONG -104.914525**

**FACILITY UTILIZING
NON-EMITTING
CONTROLLERS**

Mickey #7

25 Feb 2024, 3:33:35 PM



SW

210

W

270

240

NW

300

330

N

0

☉ 286°W (T) • 40.513681, -104.923422 ±10ft ▲ 4824ft

Mickey #7

25 Feb 2024, 3:39:07 PM



S

180

SW

210

240

W

270

300

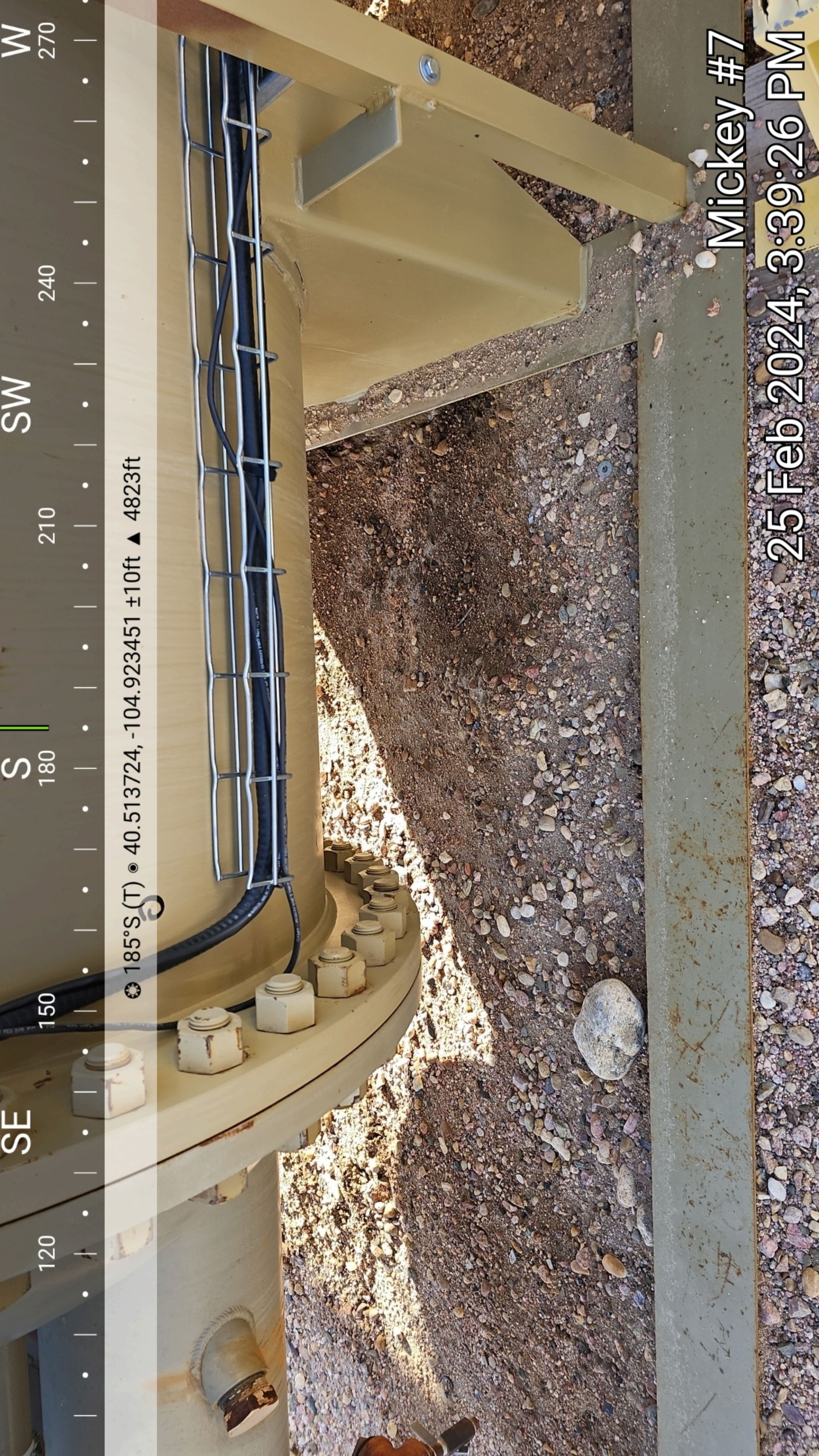
NW

330

⊙ 251°SW(T) ⊙ 40.513718, -104.923424 ±10ft ▲ 4824ft

Mickey #7

25 Feb 2024, 3:39:18 PM



SE

120

150

S

180

SW

210

240

W

270

☉ 185°S(T) ● 40.513724, -104.923451 ±10ft ▲ 4823ft

Mickey #7

25 Feb 2024, 3:39:26 PM



E

120

SE

150

S

180

SW

210

240

☀ 171°S (T) ● 40.513719, -104.923496 ±11ft ▲ 4822ft

Mickey #7

25 Feb 2024, 3:39:37 PM



NE

60

90

E

120

SE

150

180

S

210

☀ 128°SE (T) • 40.513717, -104.923564 ±9ft ▲ 4813ft

Mickey #7
25 Feb 2024, 3:40:01 PM



NE

60

E

90

SE

120

150

☉ 99°E (T) ● 40.513693, -104.923549 ±10ft ▲ 4813ft

Mickey #7

25 Feb 2024, 3:40:26 PM



E 90 120 150 180 210 SW

141°SE (T) • 40.513722, -104.923542 ±10ft ▲ 4813ft

NB-27148

Micro Motion

LEED FABRICATION SERVICES, INC.
1000 E. 10TH AVE.
DENVER, CO 80202
LOUISIANA, CO 80202 855-3130

YEAR BUILT

Mickey #7

25 Feb 2024, 3:41:45 PM