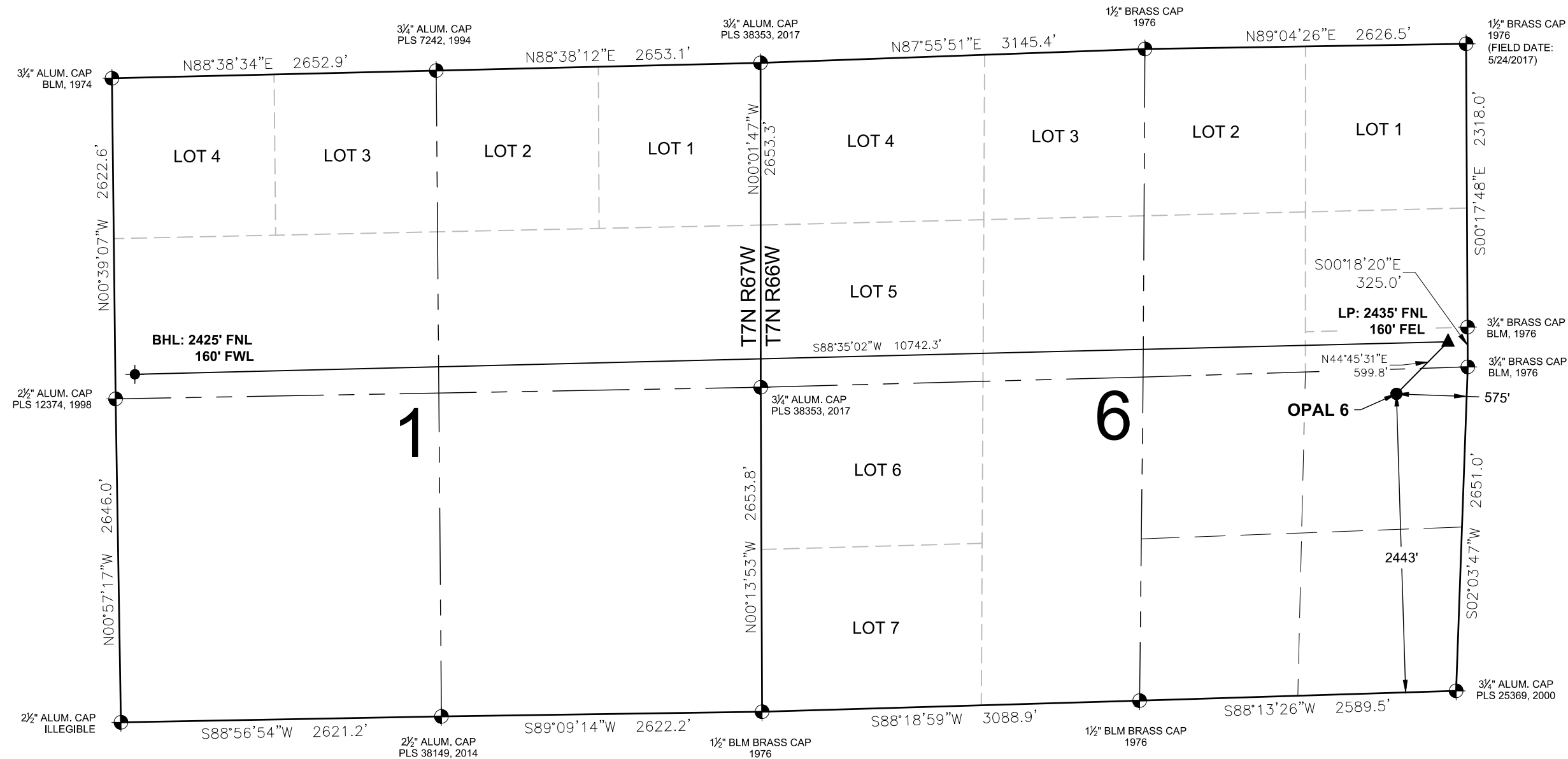


OPAL 6  
WELL LOCATION EXHIBIT



- NOTES:
1. THIS FIELD SURVEY CONFORMS TO THE MINIMUM STANDARDS SET BY THE COGCC, RULE NO. 216
  2. ALL BEARINGS ARE GRID BEARINGS OF THE COLORADO STATE PLANE COORDINATE SYSTEM, NORTH ZONE, NORTH AMERICAN DATUM 1983/2011. THE LINEAL DIMENSIONS AS SHOWN HEREIN ARE GRID DISTANCES BASED UPON THE "U.S. SURVEY FOOT." TO DERIVE GROUND DISTANCES MULTIPLY SHOWN DISTANCE BY 1.00025891.
  3. FIELD VERIFICATION OF MONUMENTS COMPLETED WITHIN 1 YEAR OF SIGNATURE DATE, UNLESS OTHERWISE NOTED.

**LEGEND**

- = EXISTING MONUMENT
- = CALCULATED POSITION
- = PROPOSED WELL
- ◆ = BOTTOM HOLE
- ▲ = LANDING POINT
- ◆ = EXISTING WELL
- LP = LANDING POINT
- BHL = BOTTOM HOLE

I, KEVIN J. MARTIN, A LICENSED PROFESSIONAL LAND SURVEYOR IN THE STATE OF COLORADO, DO HEREBY STATE TO **BAYSWATER EXPLORATION & PRODUCTION, LLC** THAT THE WELL LOCATION EXHIBIT SHOWN HEREON WAS PREPARED BY ME OR UNDER MY DIRECT SUPERVISION AND THE DRAWING SHOWN HEREON ACCURATELY DEPICTS THE PROPOSED LOCATION OF THE WELL. THIS EXHIBIT MEETS THE REQUIREMENTS OF A GIS LAND POSITION AS DEFINED BY SECTION 38-51-109.3 C.R.S. AND AS SUCH PER SECTION 38-51-109.3 C.R.S. CANNOT BE RELIED UPON TO DETERMINE OWNERSHIP.



KEVIN J. MARTIN, PLS 38580  
COLORADO LICENSED PROFESSIONAL LAND SURVEYOR  
FOR AND ON BEHALF OF P.F.S., LLC  
d.b.a. ASCENT GEOMATICS SOLUTIONS

WELL OPAL 6 TO BE  
LOCATED 2443' FSL & 575' FEL

WELL BORE COORDINATES  
(NAD83)

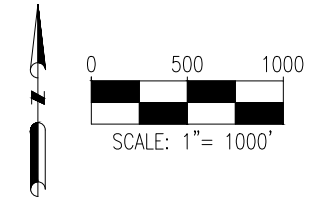
**SURFACE LOCATION:**  
GROUND ELEVATION=5128'  
LATITUDE:40.603094°N  
LONGITUDE:104.813067°W

**LANDING POINT**  
LATITUDE:40.604254°N  
LONGITUDE:104.811534°W

**BOTTOM HOLE:**  
LATITUDE:40.603747°N  
LONGITUDE:104.850216°W

WELL NOTES:  
BH LOCATION PROVIDED BY CLIENT.  
LAND SURFACE USE - DRY LAND CROP  
SEE LOCATION DRAWING FOR ADDITIONAL IMPROVEMENTS  
WITHIN 500'

PDOP=1.9  
GPS OPERATOR: STEVE ROERIG



8620 Wolff Court  
Westminster, CO 80031  
(303) 928-7128  
www.ascentgeomatics.com

|                           |                 |
|---------------------------|-----------------|
| FIELD DATE:<br>10-30-22   |                 |
| DRAWING DATE:<br>12-16-22 |                 |
| BY:<br>TRP                | CHECKED:<br>NJH |

|   |
|---|
| WELL NAME:<br>OPAL 6  |
| SURFACE LOCATION:<br>NE 1/4 SE 1/4 SEC. 6, T7N, R66W, 6TH P.M.<br>WELD COUNTY, COLORADO |

PREPARED FOR:

**BAYSWATER**  
EXPLORATION & PRODUCTION, LLC