

Wellhead Closure Checklist

COGCC Rule 911.a.(4) Environmental Site Closure Assessment Field Form

Additional attachments (optional):		Pit Closure		Tank Battery Closure		Flowline Closure		Partially Buried Vault Closure
Site Name & COGCC Facility Number:		Date:						Remediation Project #:
HSE-Gittlein, L #6-3		8-19-22						23878
Associated Wells: 1		Age of Site:						Number of Photos Attached:
05-123-18458		years						1
Location: (GPS coordinates of wellhead or southeastern most wellhead for multiple)							Estimated Facility Size (acres):	
40.256350 / -104.539540								
General Condition of Site: (General observations regarding housekeeping, corrosion, waste management, etc.)								
Overall good condition								
USCS Soil Type:				Estimated Depth to Groundwater:				
SM				~10-15'				
Hydrocarbon Impacted Soils / Spills: (Note estimated size and if impact appears to be surficial or extends to an unknown depth)								
None observed - analytical determined historical release - Extent TBD								
Salt Crusted Soils or Impacted Vegetation: (Note estimated size and if impact appears to be surficial or extends to an unknown depth)								
None observed								
Wellhead(s)								
Well API	05-123-18458							
Age	years							
Condition of surface around wellhead	Good - per Crew							
PID Readings	N/A - Excavated upon arrival							
Condition of subsurface (determine relevant PID Readings)	Good - no staining; no odor							
	0.3	0.4	0.3	0.3	10.5			
Sample taken? Location/Sample ID#	WH-SS-01	WH-SS-02	WH-SS-03	WH-SS-04	WH-FS-01			
Photo Number(s)	See photolog							
Other observations regarding wellheads:								
Well casing cut/capped after assessment								
Summary								
Was impacted soil identified?								
<input checked="" type="radio"/> No Yes - less than 10 cubic yards Yes - more than 10 cubic yards								
Total number of samples field screened:				Total number of samples collected:				
5				5				
Highest PID Reading:				Total number of samples submitted to lab for analysis:				
10.5				1				
If more than 10 cubic yards of impacted soil were observed:								
Vertical extent:				Estimated spill volume:				
Lateral extent:				Volume of soil removed:				
N/A								
Is additional investigation required?								
Was groundwater encountered during the investigation?								
<input checked="" type="radio"/> No Yes - not impacted or in contact with impacted soils Yes - groundwater impacted and/or in contact with impacted soils								
Measured depth to groundwater:				Was remedial groundwater removal conducted? Yes No				
Date Groundwater was encountered:								
Sheen on groundwater? Yes No				Volume of groundwater removed prior to sampling:				
Free product observed? Yes No				Volume of groundwater removed post sampling:				
Total number of samples collected:				Total Volume of groundwater removed:				
Total number of samples submitted to lab for analysis:								



FIGURES

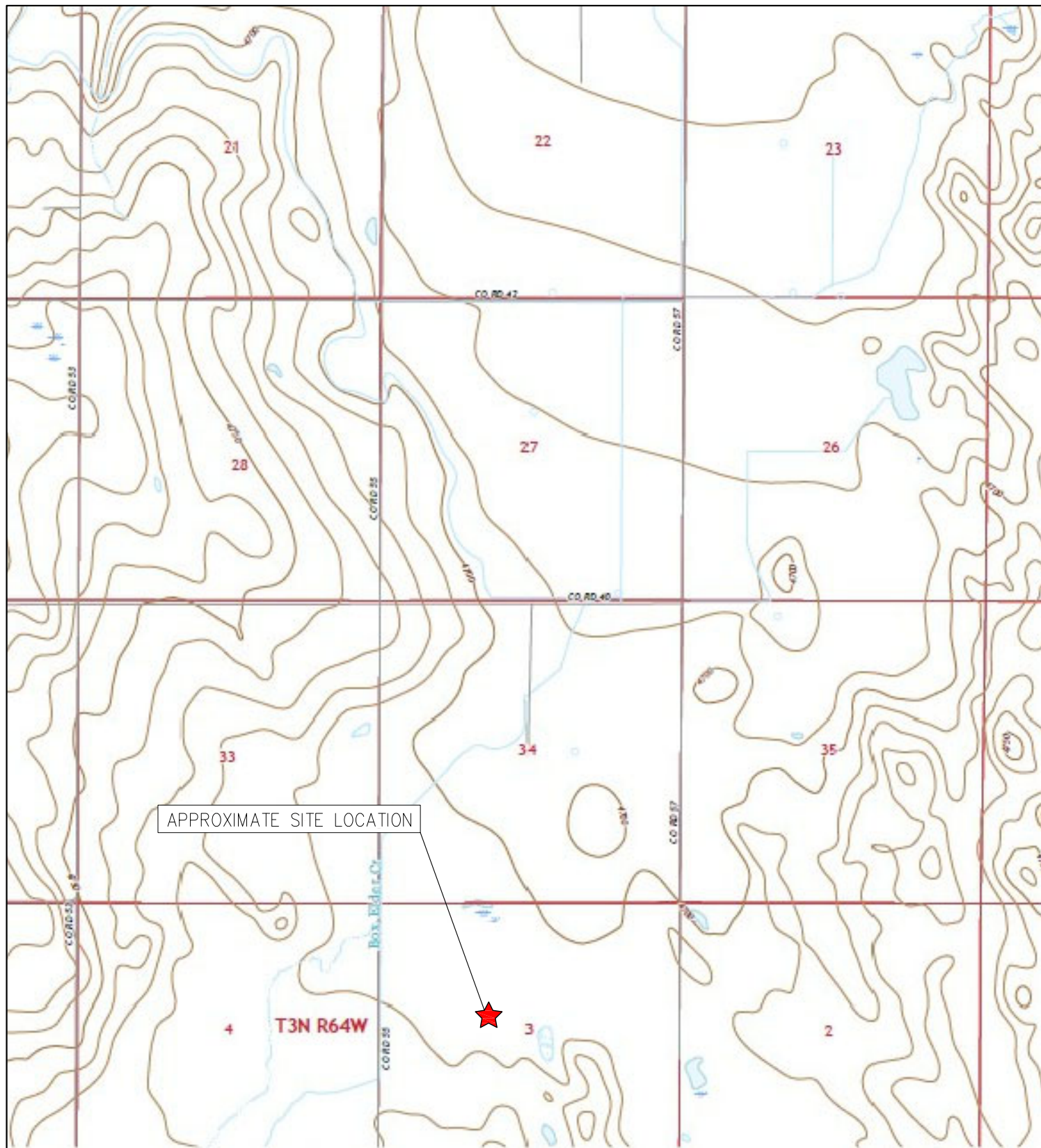
Figure 1: Topographic Site Location Map

Figure 2: Aerial Site Location Map

Figure 3: Soil Analytical Map

Figure 4: Polycyclic Aromatic Hydrocarbons Map

Figure 5: Metals in Soil Map



TOPOGRAPHIC SITE LOCATION MAP
 HSR-GITTLEIN, L #6-3
 CLOSURE ASSESSMENT
 40.256350 / -104.539540
 SE 1/4 NW 1/4 SEC.3 T3N R64W 6PM
 WELD COUNTY, COLORADO
 API # 05-123-18458
 REMEDIATION # 23878



EAGLE
 ENVIRONMENTAL
 CONSULTING, INC.

8000 W 44th Ave, Wheat Ridge, CO 80033
 Ph: 303-433-0479 • F: 303-325-5449

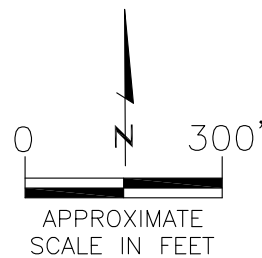
SOURCE: USGS 7.5 MINUTE TOPOGRAPHIC MAP
 VALLEY VIEW SCHOOL, CO QUADRANGLE 2022

FIGURE 1



LEGEND

- FORMER HSR-GITTEIN, L #6-3 WELLHEAD (PLUGGED AND ABANDONED)
- ASSOCIATED SEPARATOR
- APPROXIMATE FLOWLINE LOCATION



AERIAL SITE LOCATION MAP

HSR-GITTEIN, L #6-3
CLOSURE ASSESSMENT
40.256350 / -104.539540
SE $\frac{1}{4}$ NW $\frac{1}{4}$ SEC.3 T3N R64W 6PM
WELD COUNTY, COLORADO
API # 05-123-18458
REMEDATION # 23878

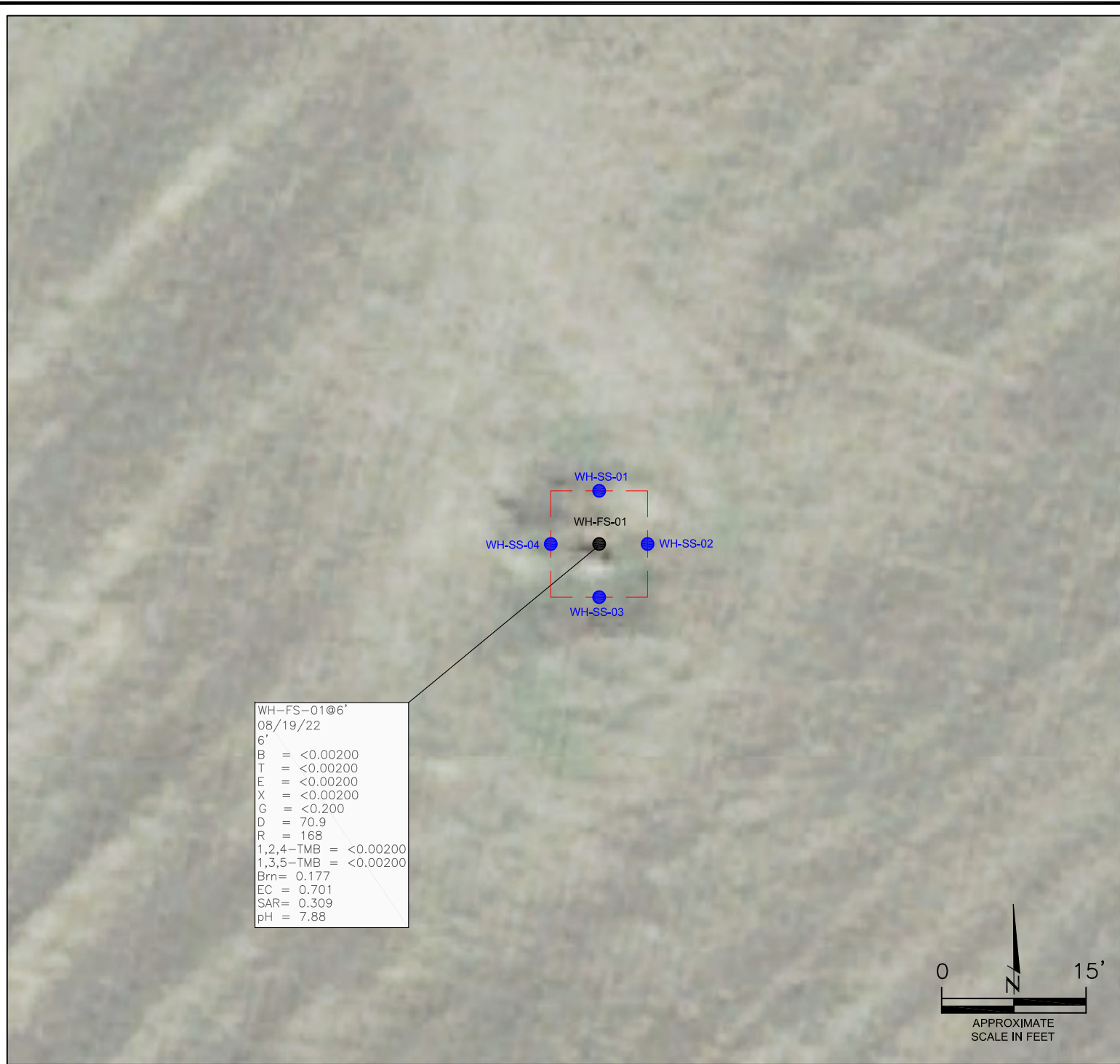
DATE: 09/08/22

FIG. NO.
2

DRAWN BY:
GEC



EAGLE
ENVIRONMENTAL
CONSULTING, INC.
8000 W 44th Ave, Wheat Ridge, CO 80033
Ph: 303-433-0479 • F: 303-325-5449



WH-FS-01@6'
08/19/22
6'
B = <0.00200
T = <0.00200
E = <0.00200
X = <0.00200
G = <0.200
D = 70.9
R = 168
1,2,4-TMB = <0.00200
1,3,5-TMB = <0.00200
Brn= 0.177
EC = 0.701
SAR= 0.309
pH = 7.88

LEGEND

- — — INITIAL ASSESSMENT BOUNDARIES
- SS-02 APPROXIMATE LOCATION OF SOIL SAMPLES FIELD SCREENED, ONLY, WITH PHOTOIONIZATION DETECTOR
- SS-02 APPROXIMATE LOCATION OF SOIL SAMPLES SUBMITTED FOR LABORATORY ANALYSIS

PARAMETERS

SAMPLE LOCATION
DATE
DEPTH (FEET)
B = BENZENE (mg/kg)
T = TOLUENE (mg/kg)
E = ETHYLBENZENE (mg/kg)
X = TOTAL XYLENES (mg/kg)
G = TPH-GRO (mg/kg)
D = TPH-DRO (mg/kg)
R = TPH-RRO (mg/kg)
1,2,4-TMB = 1,2,4 TRIMETHYLBENZENE (mg/kg)
1,3,5-TMB = 1,3,5 TRIMETHYLBENZENE (mg/kg)
Brn= BORON (mg/L)
EC = SPECIFIC CONDUCTANCE (mmhos/cm)
SAR= SODIUM ADSORPTION RATIO
pH = pH (pH UNITS)

mg/kg = MILLIGRAMS PER KILOGRAM
mg/L = MILLIGRAMS PER LITER
mmhos/cm = MILLIMHOS PER CENTIMETER

TPH-GRO = TOTAL PETROLEUM HYDROCARBONS – GASOLINE RANGE ORGANICS
TPH-DRO = TOTAL PETROLEUM HYDROCARBONS – DIESEL RANGE ORGANICS
TPH-RRO = TOTAL PETROLEUM HYDROCARBONS – RESIDUAL RANGE ORGANICS

NOTES:
VALUES PRESENTED WITH A LESS THAN SYMBOL (<) DID NOT CONTAIN CONCENTRATIONS AT OR ABOVE LABORATORY DETECTION LIMITS.

VALUES PRESENTED IN **BOLD** EXCEED COGCC TABLE 915-1 REGULATORY LIMITS.

COGCC = COLORADO OIL AND GAS CONSERVATION COMMISSION

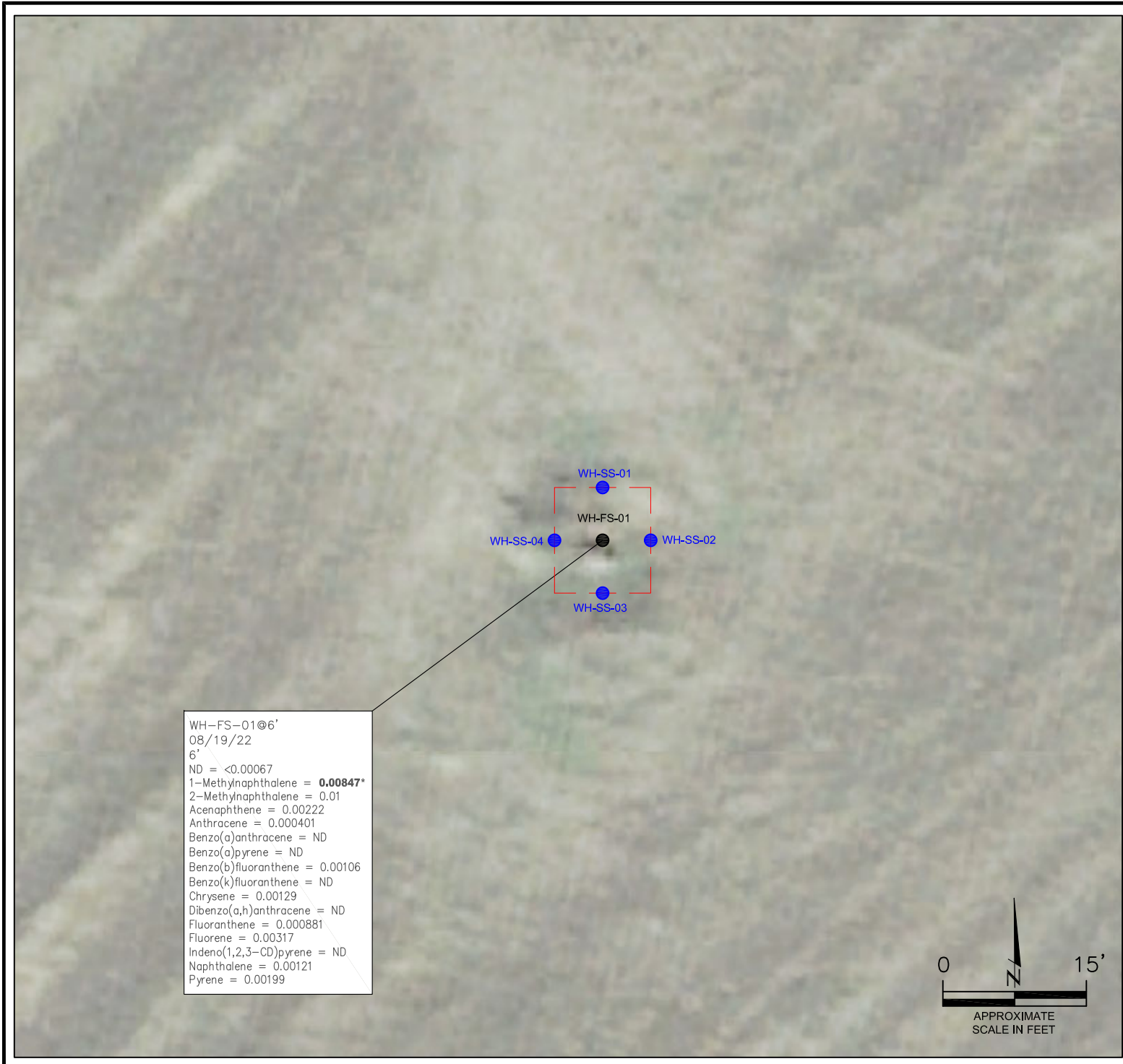
SOIL ANALYTICAL MAP
HSR-GITTLEIN, L #6-3
CLOSURE ASSESSMENT
40.256350 / -104.539540
SE¼ NW¼ SEC.3 T3N R64W 6PM
WELD COUNTY, COLORADO
API # 05-123-18458
REMEDATION # 23878

DRAWN BY:
GEC

FIG.
NO.
3



EAGLE
ENVIRONMENTAL
CONSULTING, INC.
8000 W 44th Ave, Wheat Ridge, CO 80033
Ph: 303-433-0479 • F: 303-325-5449



WH-FS-01@6'
08/19/22
6'
ND = <0.00067
1-Methylnaphthalene = **0.00847***
2-Methylnaphthalene = 0.01
Acenaphthene = 0.00222
Anthracene = 0.000401
Benzo(a)anthracene = ND
Benzo(a)pyrene = ND
Benzo(b)fluoranthene = 0.00106
Benzo(k)fluoranthene = ND
Chrysene = 0.00129
Dibenzo(a,h)anthracene = ND
Fluoranthene = 0.000881
Fluorene = 0.00317
Indeno(1,2,3-CD)pyrene = ND
Naphthalene = 0.00121
Pyrene = 0.00199

LEGEND

- — INITIAL ASSESSMENT BOUNDARIES
- SS-02 APPROXIMATE LOCATION OF SOIL SAMPLES FIELD SCREENED, ONLY, WITH PHOTOIONIZATION DETECTOR
- SS-02 APPROXIMATE LOCATION OF SOIL SAMPLES SUBMITTED FOR LABORATORY ANALYSIS

PARAMETERS

SAMPLE LOCATION
DATE SAMPLE COLLECTED
APPROXIMATE DEPTH
POLYCYCLIC AROMATIC HYDROCARBONS (PAHs) (mg/kg)

mg/kg = MILLIGRAMS PER KILOGRAM

ND = NON-DETECT

NOTES:
VALUES PRESENTED WITH A LESS THAN SYMBOL (<) DID NOT CONTAIN CONCENTRATIONS AT OR ABOVE LABORATORY DETECTION LIMITS.

VALUES PRESENTED IN **BOLD** EXCEED COGCC TABLE 915-1 REGULATORY LIMITS.

VALUES PRESENTED WITH AN ASTERISK (*) EXCEED COGCC TABLE 915-1 PROTECTION OF GROUNDWATER SOIL SCREENING LEVELS.

COGCC = COLORADO OIL AND GAS CONSERVATION COMMISSION

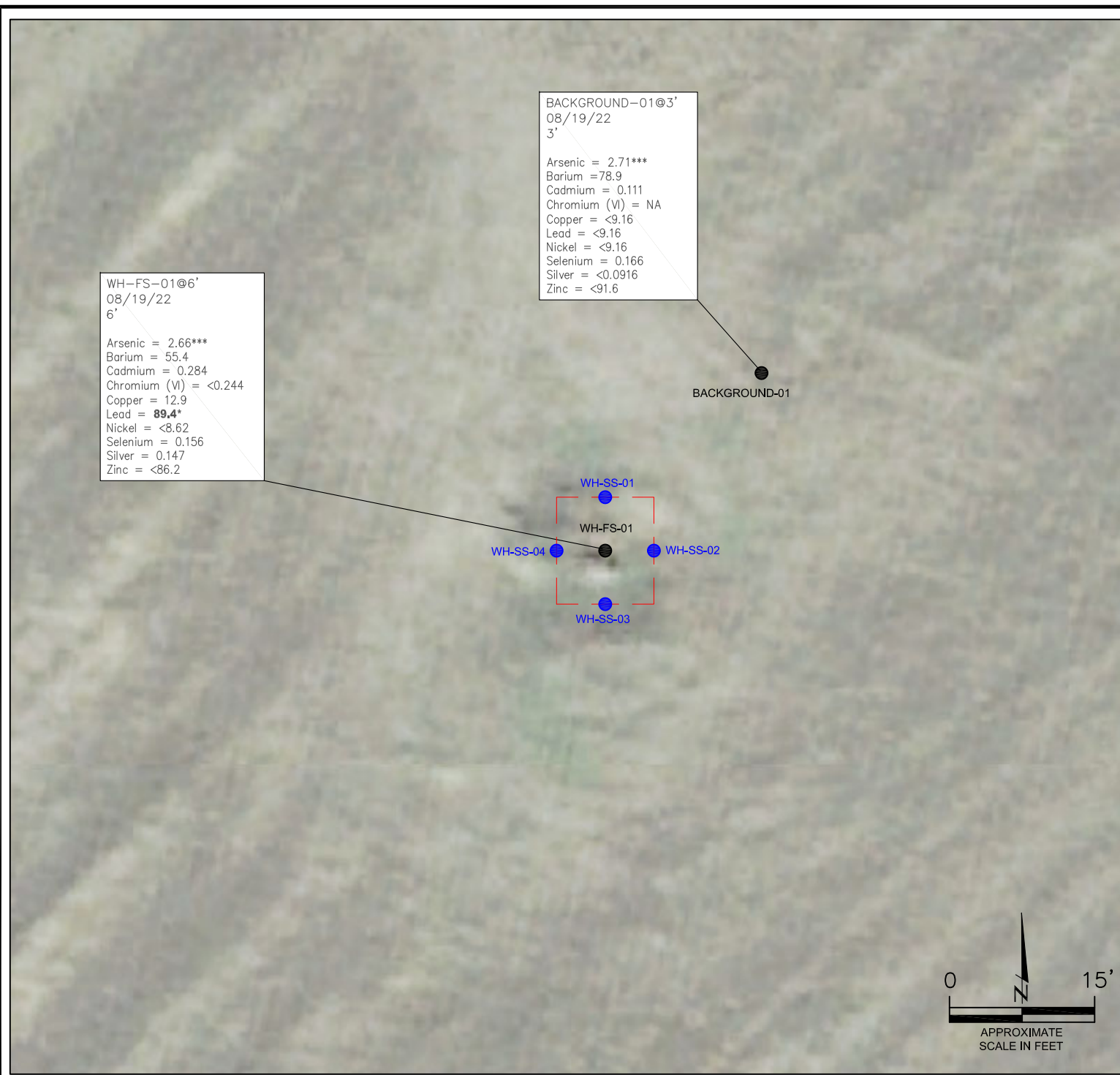
POLYCYCLIC AROMATIC HYDROCARBONS MAP
HSR-GITTLEIN, L #6-3
CLOSURE ASSESSMENT
40.256350 / -104.539540
SE¼ NW¼ SEC.3 T3N R64W 6PM
WELD COUNTY, COLORADO
API # 05-123-18458
REMEDIATION # 23878

DRAWN BY:
GEC

FIG.
NO.
4



EAGLE
ENVIRONMENTAL
CONSULTING, INC.
8000 W 44th Ave, Wheat Ridge, CO 80033
Ph: 303-433-0479 • F: 303-325-5449



WH-FS-01@6'
08/19/22
6'

Arsenic = 2.66***
Barium = 55.4
Cadmium = 0.284
Chromium (VI) = <0.244
Copper = 12.9
Lead = **89.4***
Nickel = <8.62
Selenium = 0.156
Silver = 0.147
Zinc = <86.2

BACKGROUND-01@3'
08/19/22
3'

Arsenic = 2.71***
Barium = 78.9
Cadmium = 0.111
Chromium (VI) = NA
Copper = <9.16
Lead = <9.16
Nickel = <9.16
Selenium = 0.166
Silver = <0.0916
Zinc = <91.6

BACKGROUND-01

WH-SS-01
WH-FS-01
WH-SS-02
WH-SS-03
WH-SS-04

LEGEND

- INITIAL ASSESSMENT BOUNDARIES
- SS-02 APPROXIMATE LOCATION OF SOIL SAMPLES FIELD SCREENED, ONLY, WITH PHOTOIONIZATION DETECTOR
- SS-02 APPROXIMATE LOCATION OF SOIL SAMPLES SUBMITTED FOR LABORATORY ANALYSIS

PARAMETERS

SAMPLE LOCATION
DATE SAMPLE COLLECTED
APPROXIMATE DEPTH
Arsenic = (mg/kg)
Barium = (mg/kg)
Cadmium = (mg/kg)
Chromium (VI) = (mg/kg)
Copper = (mg/kg)
Lead = (mg/kg)
Nickel = (mg/kg)
Selenium = (mg/kg)
Silver = (mg/kg)
Zinc = (mg/kg)

mg/kg = MILLIGRAMS PER KILOGRAM

NA - NOT ANALYZED

NOTES:

VALUES PRESENTED WITH A LESS THAN SYMBOL (<) DID NOT CONTAIN CONCENTRATIONS AT/OR ABOVE LABORATORY REPORTING LIMITS AND/OR MINIMUM DETECTION LIMITS.

VALUES PRESENTED IN **BOLD** EXCEED COGCC TABLE 915-1 REGULATORY LIMITS.

VALUES PRESENTED WITH ASTERISK (*) EXCEED COGCC TABLE 915-1 PROTECTION OF GROUNDWATER SOIL SCREENING LEVELS.

**ACHIEVABLE PRACTICAL QUANTITATIVE LIMITS FOR HEXAVALENT CHROMIUM (Cr VI) IN SOILS IS IN THE RANGE OF 0.1 TO 1 mg/kg.

***ARSENIC IS NATURALLY OCCURRING IN COLORADO. LOCAL "CLEAN-UP LEVEL" (3.39 mg/kg) IS 1.25*BACKGROUND (2.71 mg/kg).

COGCC = COLORADO OIL AND GAS CONSERVATION COMMISSION

METALS IN SOIL MAP
HSR-GITTLEIN, L #6-3
CLOSURE ASSESSMENT
40.256350 / -104.539540
SE¼ NW¼ SEC.3 T3N R64W 6PM
WELD COUNTY, COLORADO
API # 05-123-18458
REMEDIAL # 23878

DRAWN BY:
GEC

FIG.
NO.
5



EAGLE
ENVIRONMENTAL
CONSULTING, INC.
8000 W 44th Ave, Wheat Ridge, CO 80033
Ph: 303-433-0479 • F: 303-325-5449



TABLES

Table 1: Photoionization Detector Reading Summary

Table 2: Soil Analytical Results Summary

Table 3: Polycyclic Aromatic Hydrocarbons Analytical Results Summary

Table 4: Metals Analytical Results Summary

TABLE 1
PHOTOIONIZATION DETECTOR READING SUMMARY
HSR-GITTLEIN, L #6-3
CLOSURE ASSESSMENT
40.256350 / -104.539540
SE1/4 NW1/4 SEC.3 T3N R64W 6PM
WELD COUNTY, COLORADO
API # 05-123-18458
REMEDATION # 23878

Sample Location (Latitude/Longitude)	Date	Approximate Depth (feet)	PID Reading (ppm-v)	Lab Submission (Y/N)
WH-SS-01 @ 5' (40.256371 / -104.539541)	08/19/22	5	0.3	N
WH-SS-02 @ 5' (40.256357 / -104.539515)	08/19/22	5	0.4	N
WH-SS-03 @ 5' (40.256338 / -104.539538)	08/19/22	5	0.3	N
WH-SS-04 @ 5' (40.256350 / -104.539561)	08/19/22	5	0.3	N
WH-FS-01 @ 6' (40.256351 / -104.539542)	08/19/22	6	10.5	Y
Background-01 @ 3' (40.256412 / -104.539490)	08/19/22	3	1.3	Y
(Y/N) = Yes or No ppm-v = parts per million by volume PID = Photoionization Detector				

TABLE 2
SOIL ANALYTICAL RESULTS SUMMARY
HSR-GITTLEIN, L #6-3
CLOSURE ASSESSMENT
40.256350 / -104.539540
SE1/4 NW1/4 SEC.3 T3N R64W 6PM
WELD COUNTY, COLORADO
API # 05-123-18458
REMEDATION # 23878

Sample Location (Latitude/Longitude)	Date	Approximate Depth (feet)	PID Reading (ppm-v)	Benzene (mg/kg)	Toluene (mg/kg)	Ethylbenzene (mg/kg)	Total Xylenes (mg/kg)	TPH-GRO (mg/kg)	TPH-DRO (mg/kg)	TPH-RRO (mg/kg)	1,2,4-TMB (mg/kg)	1,3,5-TMB (mg/kg)	Boron (mg/L)	Specific Conductance (mmhos/cm)	pH (pH units)	SAR
COGCC Table 915-1 Residential Screening Levels (mg/kg)				1.20	490	5.8	58	500			30	27	2	<4	6-8.3	<6
COGCC Table 915-1 Protection of Groundwater Soil Screening Levels				0.0026	0.69	0.78	9.9	--			0.0081	0.0087	--	--	--	--
WH-FS-01 @ 6" (40.256351 / -104.539542)	08/19/22	6	10.5	<0.00200	<0.00200	<0.00200	<0.00200	<0.200	70.9	168	<0.00200	<0.00200	0.177	0.701	7.88	0.309
COGCC = Colorado Oil and Gas Conservation Commission mg/kg = milligrams per kilogram mmhos/cm = millimhos per centimeter PID = Photoionization Detector ppm-v = parts per million by volume mg/L = milligrams per liter SAR = Sodium Adsorption Ratio Note: Values presented with a less than symbol (<) did not contain concentrations at or above the laboratory reporting limit. Note: Values presented in BOLD contained concentrations exceeding COGCC Table 915-1 Regulatory Limits.																

TABLE 3
POLYCYCLIC AROMATIC HYDROCARBONS ANALYTICAL RESULTS SUMMARY
HSR-GITTLEIN, L #6-3
CLOSURE ASSESSMENT
40.256350 / -104.539540
SE1/4 NW1/4 SEC.3 T3N R64W 6PM
WELD COUNTY, COLORADO
API # 05-123-18458
REMEDIATION # 23878

Sample Location (Latitude/Longitude)	Date	Approximate Depth (feet)	PID Reading (ppm- v)	1-Methyl- naphthalene (mg/kg)	2-Methyl-naphthalene (mg/kg)	Acenaphthene (mg/kg)	Anthracene (mg/kg)	Benzo(a)-anthracene (mg/kg)	Benzo(a)- pyrene (mg/kg)	Benzo(b)- fluoranthene (mg/kg)	Benzo(k)- fluoranthene (mg/kg)	Chrysene (mg/kg)	Dibenzo(a,h)- anthracene (mg/kg)	Fluoranthene (mg/kg)	Fluorene (mg/kg)	Indeno(1,2,3- cd)-pyrene (mg/kg)	Naphthalene (mg/kg)	Pyrene (mg/kg)
COGCC Table 915-1 Residential Screening Levels				18	24	360	1,800	1.1	0.11	1.1	11	110	0.11	240	240	1.1	2	180
COGCC Table 915-1 Protection of Groundwater Soil Screening Levels				0.006	0.019	0.55	5.8	0.011	0.24	0.3	2.9	9	0.096	8.9	0.54	0.98	0.0038	1.3
WH-FS-01 @ 6" (40.256351 / -104.539542)	08/19/22	6	10.5	0.00847*	0.01	0.00222	0.000401	<0.00067	<0.00067	0.00106	<0.00067	0.00129	<0.00067	0.000881	0.00317	<0.00067	0.00121	0.00199
COGCC = Colorado Oil and Gas Conservation Commission mg/kg = milligrams per kilogram Note: Values presented with a less than symbol (<) did not contain concentrations at or above the laboratory reporting limit. Note: Values presented in BOLD contained concentrations exceeding COGCC Table 915-1 Regulatory Limits				PID = Photoionization Detector ppm-v = parts per million by volume														

TABLE 4
METALS ANALYTICAL RESULTS SUMMARY
HSR-GITTLIN, L #6-3
CLOSURE ASSESSMENT
40.256350 / -104.539540
SE1/4 NW1/4 SEC.3 T3N R64W 6PM
WELD COUNTY, COLORADO
API # 05-123-18458
REMEDIATION # 23878

Sample Location (Latitude/Longitude)	Date	Approximate Depth (feet)	Arsenic (mg/kg)	Barium (mg/kg)	Cadmium (mg/kg)	Hexavalent Chromium (mg/kg)	Copper (mg/kg)	Lead (mg/kg)	Nickel (mg/kg)	Selenium (mg/kg)	Silver (mg/kg)	Zinc (mg/kg)
COGCC Table 915-1 Residential Screening Levels			0.68***	15,000	71	0.3**	3,100	400	1,500	390	390	23,000
COGCC Table 915-1 Protection of Groundwater Soil Screening Levels			0.29***	82	0.38	0.00067**	46	14	26	0.26	0.8	370
Local Clean-up Levels			3.39***	--	--	0.1 to 1**	--	--	--	--	--	--
WH-FS-01 @ 6" (40.256351 / -104.539542)	08/19/22	6	2.66***	55.4	0.284	<0.244**	12.9	89.4*	<8.62	0.156	0.147	<86.2
Background-01 @ 3" (40.256412 / -104.539490)	08/19/22	3	2.71***	78.9	0.111	NA	<9.16	<9.16	<9.16	0.166	<0.0916	<91.6
COGCC = Colorado Oil and Gas Conservation Commission NA= Not Analyzed mg/kg = milligrams per kilogram Notes: Values presented with a less than symbol (<) did not contain concentrations at or above the laboratory reporting limit or minimum detection levels. Values presented in BOLD contained concentrations exceeding applicable COGCC Table 915-1 Regulatory Limits Values presented in BOLD+* contained concentrations exceeding COGCC Table 915-1 Protection of Groundwater Soil Screening Levels **Achievable practical quantitative limits for Hexavalent Chromium in soils is in the range of 0.1 to 1 mg/kg. ***Arsenic is naturally occurring in Colorado. Local clean-up level (3.39 mg/kg) is 1.25*Background (2.71 mg/kg)												



ATTACHMENT A

Photo Log

HSR-Gittlein, L #6-3

API # 05-123-18458

Remediation # 23878

Closure Assessment

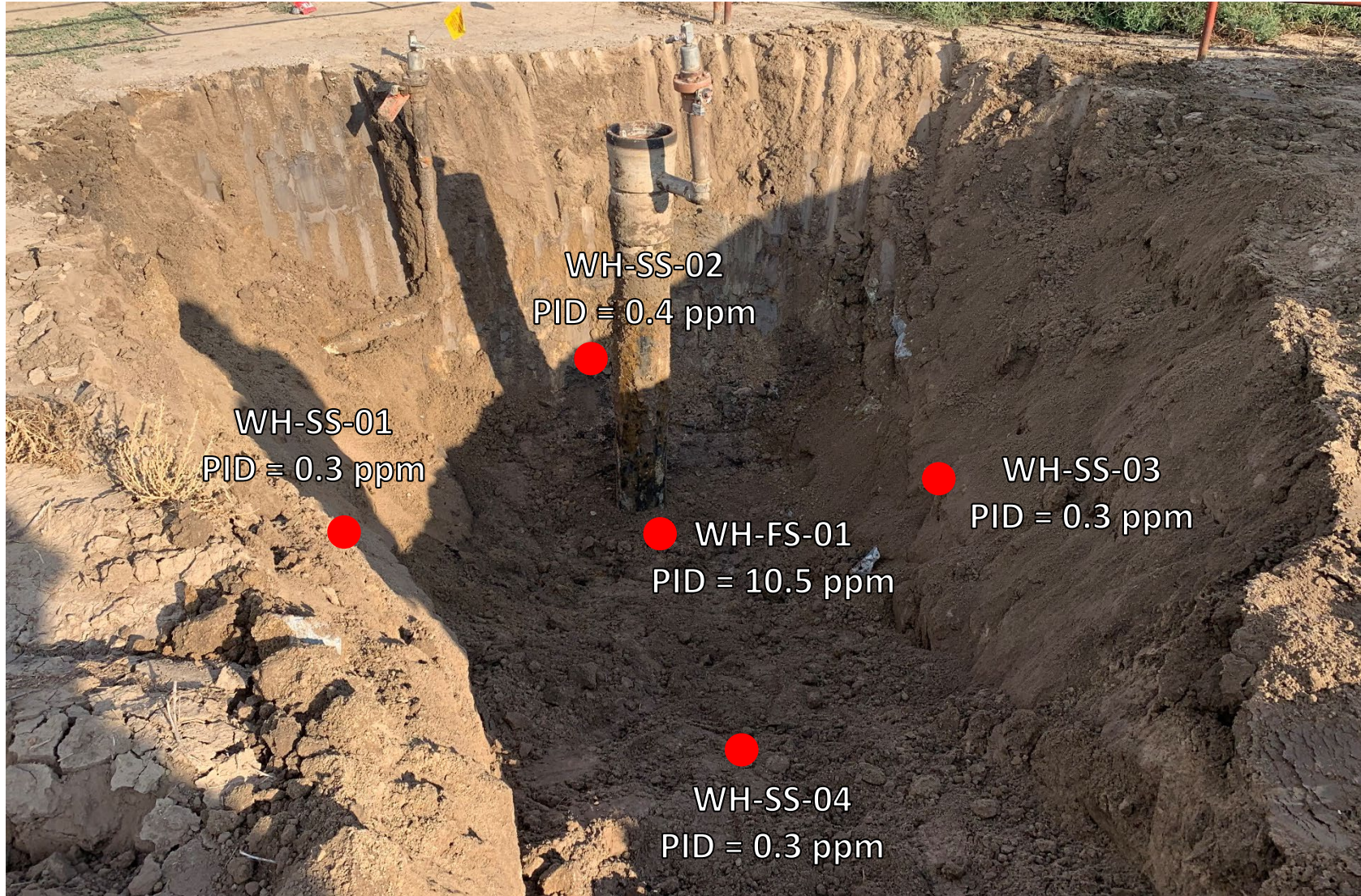
August 2022



EAGLE
ENVIRONMENTAL
CONSULTING, INC.
8000 W 44th Ave, Wheat Ridge, CO 80033
Ph: 303-433-0479 • F: 303-325-5449



Wellhead Excavation – 08/19/22



Looking east-southeast

No petroleum hydrocarbon staining or odor observed



ATTACHMENT B

Laboratory Analytical Reports



September 21, 2022

Eagle Environmental Consulting, Inc.

Martin C Eckert III

8000 W 44th Ave

Wheat Ridge CO 80033

Project Name - Noble - Gittlein, L 6-3

Project Number - [none]

Attached are your analytical results for Noble - Gittlein, L 6-3 received by Origins Laboratory, Inc. August 19, 2022. This project is associated with Origins project number Y208493-01.

The analytical results in the following report were analyzed under the guidelines of EPA Methods. These methods are identified as follows; "SW" are defined in SW-846, "EPA" are defined in 40CFR part 136 and "SM" are defined in the most current revision of Standard Methods For the Examination of Water and Wastewater.

The analytical results apply specifically to the samples and analyses specified per the attached Chain of Custody. As such, this report shall not be reproduced except in full, without the written approval of Origin's laboratory.

Unless otherwise noted, the analytical results for all soil samples are reported on a wet weight basis. All analytical analyses were performed under NELAP guidelines unless noted by a data qualifier.

Any holding time exceedances, deviations from the method specifications or deviations from Origins Laboratory's Standard Operating Procedures are outlined in the case narrative.

Thank you for selecting Origins for your analytical needs. Please contact us with any questions concerning this report, or if we can help with anything at all.

Origins Laboratory, Inc.
303.433.1322
o-squad@oelabinc.com



1725 Elk Place, Denver, CO 80211 | Phone: 303.433.1322 | Fax: 303.265.9645

Eagle Environmental Consulting, Inc.

8000 W 44th Ave

Wheat Ridge CO 80033

Martin C Eckert III

Project Number: [none]

Project: Noble - Gittlein, L 6-3

CROSS REFERENCE REPORT

Sample ID	Laboratory ID	Matrix	Date Sampled	Date Received
WH-FS-01@6'	Y208493-01	Soil	August 19, 2022 8:23	08/19/2022 12:55

Chain of Custody Modification Request

On 9/8/2022, Grace Congdon from Eagle Environmental contacted Jordan Bynon via email regarding Y208493 requesting that Table 915 Metals be added to the analysis.

Requested modifications to the chain of custody were made by Jordan Bynon on 9/9/2022.

Origins Laboratory, Inc.



The results in this report apply to the samples analyzed in accordance with the chain of custody document. This analytical report must be reproduced in its entirety.

Eagle Environmental Consulting, Inc.
8000 W 44th Ave
Wheat Ridge CO 80033

Martin C Eckert III
Project Number: [none]
Project: Noble - Gittlein, L 6-3

ORIGINS
LABORATORY, INC

www.originslaboratory.com

4208493

page 1 of 1

Client: Eagle Env. Consulting
Address: 8000 W 44th Ave
Wheat Ridge CO 80033
Telephone Number: 303-433-0479
Email Address: Mac30ec56-murach

Project Manager: Martin Eckert III
Project Name: Gittlein, L 6-3
Project Number: -
Samples Collected By: RH

Fax: 303.265.9645

Sample ID Description	Date Sampled	Time Sampled	# of Containers	Preservative				Matrix		Analysis				Sample Instructions
				Unpreserved	HCl	HNO ₃	Other	Groundwater	Soil	Other	GC/MS (EPA)	GC/MS (EPA)	GC/MS (EPA)	
WTF-01061	8/19/12	0823	2	A										GC/MS (EPA) - 1
														GC/MS (EPA) - 2
														GC/MS (EPA) - 3
														GC/MS (EPA) - 4
														GC/MS (EPA) - 5
														GC/MS (EPA) - 6
														GC/MS (EPA) - 7
														GC/MS (EPA) - 8
														GC/MS (EPA) - 9
														GC/MS (EPA) - 10

Relinquished By: [Signature] Date: 8/19/12 Time: 1255
Relinquished By: [Signature] Date: 8/19/12 Time: 1255

Turnaround Time: Same Day ☐ 24 Hr ☐ 48 Hr ☐ 72 Hr ☐ Standard ☒

Temp Received: 3.3° Date Results Needed: 8/19/12

Origins Laboratory, Inc.

Bynon

The results in this report apply to the samples analyzed in accordance with the chain of custody document. This analytical report must be reproduced in its entirety.

Eagle Environmental Consulting, Inc.
8000 W 44th Ave
Wheat Ridge CO 80033

Martin C Eckert III
Project Number: [none]
Project: Noble - Gittlein, L 6-3

Origins Laboratory

F-012207-01-R1
Effective Date: 01/09/12

Sample Receipt Checklist

Origins Work Order: 4208493

Client: Eagle Environmental

Client Project ID: Gittlein, L 6-3

Checklist Completed by: JBH

Shipped Via: HD

(UPS, FedEx, Hand Delivered, Pick-up, etc.)

Date/time completed: 8/19/2012

Airbill #: N/A

Matrix(s) Received: (Check all that apply): ☒ Soil/Solid

☐ Water

☐ Other:

Cooler Number/Temperature: 1/33°C

1 °C 1 °C 1 °C (Describe)

Thermometer ID: T004

Requirement Description	Yes	No	N/A	Comments (if any)
If samples require cooling, was the temperature between 0°C to ≤ 6°C ⁽¹⁾ ?	X			
Is there ice present (document if blue ice is used)	X			
Are custody seals present on cooler? (if so, document in comments if they are signed and dated, broken or intact)		X		
Are custody seals present on each sample container? (if so, document in comments if they are signed and dated, broken or intact)		X		
Were all samples received intact ⁽¹⁾ ?	X			
Was adequate sample volume provided ⁽¹⁾ ?	X			
Are short holding time analytes or samples with HTs due within 48 hours present ⁽¹⁾ ?		X		
Is a chain-of-custody (COC) present and filled out completely ⁽¹⁾ ?	X			
Does the COC agree with the number and type of sample bottles received ⁽¹⁾ ?	X			
Do the sample IDs on the bottle labels match the COC ⁽¹⁾ ?	X			
Is the COC properly relinquished by the client with date and time recorded ⁽¹⁾ ?	X			
For volatiles in water – is there headspace (> ¼ inch bubble) present? If yes, contact client and note in narrative.			X	
Are samples preserved that require preservation and was it checked ⁽¹⁾ ? (note ID of confirmation instrument used in comments) / (preservation is not confirmed for subcontracted analyses in order to insure sample integrity)/(pH < 2 for samples preserved with HNO ₃ , HCL, H ₂ SO ₄) / (pH > 10 for samples preserved with NaAsO ₂ +NaOH, ZnAc+NaOH)			X	
Additional Comments (if any):				

⁽¹⁾If NO, then contact the client before proceeding with analysis and note date/time and person contacted as well as the corrective action to in the additional comments (above) and the case narrative.

Reviewed by: JBH (Project Manager)

8/22/2012
Date/Time Reviewed

Origins Laboratory, Inc.

JBH

The results in this report apply to the samples analyzed in accordance with the chain of custody document. This analytical report must be reproduced in its entirety.

Eagle Environmental Consulting, Inc.
8000 W 44th Ave
Wheat Ridge CO 80033

Martin C Eckert III
Project Number: [none]
Project: Noble - Gittlein, L 6-3

WH-FS-01@6'

8/19/2022 8:23:00AM

Analyte	Result	Min Detection Limit	Reporting Limit	Units	Dilution	Batch	Prepared	Analyzed	Notes
---------	--------	---------------------	-----------------	-------	----------	-------	----------	----------	-------

Origins Laboratory, Inc.
Y208493-01 (Soil)

Boron (DTPA Sorbitol)

Boron	0.177	0.102	mg/L	1	B2H2202	08/22/2022	08/23/2022
-------	-------	-------	------	---	---------	------------	------------

DRO/ORO by EPA 8015D

Diesel (C10-C28)	70.9	25.0	mg/kg	1	B2H2214	08/22/2022	08/23/2022
Residual Range Organics (C28-C40)	168	100	"	"	"	"	"

Surrogate: o-Terphenyl	112 %	50-150	"	"	"
------------------------	-------	--------	---	---	---

GBTEX+TMBs by 8260D

1,2,4-Trimethylbenzene	ND	0.00200	mg/kg	1	B2H2309	08/23/2022	08/26/2022	U
1,3,5-Trimethylbenzene	ND	0.00200	"	"	"	"	"	U
Benzene	ND	0.00200	"	"	"	"	"	U
Ethylbenzene	ND	0.00200	"	"	"	"	"	U
Toluene	ND	0.00200	"	"	"	"	"	U
Xylenes, total	ND	0.00200	"	"	"	"	"	U
Gasoline Range Hydrocarbons	ND	0.200	"	"	"	"	"	U

Surrogate: 1,2-Dichloroethane-d4	108 %	70-130	"	"	"
Surrogate: Toluene-d8	97.7 %	70-130	"	"	"

Origins Laboratory, Inc.



The results in this report apply to the samples analyzed in accordance with the chain of custody document. This analytical report must be reproduced in its entirety.

Eagle Environmental Consulting, Inc.
8000 W 44th Ave
Wheat Ridge CO 80033

Martin C Eckert III
Project Number: [none]
Project: Noble - Gittlein, L 6-3

WH-FS-01@6'

8/19/2022 8:23:00AM

Analyte	Result	Min Detection Limit	Reporting Limit	Units	Dilution	Batch	Prepared	Analyzed	Notes
---------	--------	---------------------	-----------------	-------	----------	-------	----------	----------	-------

Origins Laboratory, Inc.
Y208493-01 (Soil)

GBTEX+TMBs by 8260D

Surrogate: 4-Bromofluorobenzene	91.7 %	70-130	B2H2309	08/23/2022	08/26/2022
---------------------------------	--------	--------	---------	------------	------------

Metals by Saturated Paste by EPA 6010

Calcium	2.44	0.499	meq/L	10	[CALC]	08/23/2022	08/24/2022
Magnesium	ND	0.823	"	"	"	"	"
Sodium	ND	0.435	"	"	"	"	"

PAH by 8270D SIM

1-Methylnaphthalene	0.00847	0.000364	0.00067	mg/Kg	1	L633902	08/24/2022	08/25/2022
2-Methylnaphthalene	0.01	0.000645	0.00067	"	"	"	"	"
Acenaphthene	0.00222	0.000304	0.00067	"	"	"	"	"
Anthracene	0.000401	0.000334	0.00067	"	"	"	"	" J
Benzo(a)anthracene	ND	0.000493	0.00067	"	"	"	"	"
Benzo(a)pyrene	ND	0.000468	0.00067	"	"	"	"	"
Benzo(b)fluoranthene	0.00106	0.000585	0.00067	"	"	"	"	"
Benzo(k)fluoranthene	ND	0.000437	0.00067	"	"	"	"	"
Chrysene	0.00129	0.000624	0.00067	"	"	"	"	"
Dibenz(a,h)anthracene	ND	0.000614	0.00067	"	"	"	"	"
Fluoranthene	0.000881	0.000394	0.00067	"	"	"	"	"
Fluorene	0.00317	0.000286	0.00067	"	"	"	"	"
Indeno(1,2,3-cd)pyrene	ND	0.000627	0.00067	"	"	"	"	"

Origins Laboratory, Inc.



The results in this report apply to the samples analyzed in accordance with the chain of custody document. This analytical report must be reproduced in its entirety.

Eagle Environmental Consulting, Inc.
8000 W 44th Ave
Wheat Ridge CO 80033

Martin C Eckert III
Project Number: [none]
Project: Noble - Gittlein, L 6-3

WH-FS-01@6'

8/19/2022 8:23:00AM

Analyte	Result	Min Detection Limit	Reporting Limit	Units	Dilution	Batch	Prepared	Analyzed	Notes
---------	--------	---------------------	-----------------	-------	----------	-------	----------	----------	-------

Waypoint Analytical, LLC.
Y208493-01 (Soil)

PAH by 8270D SIM

Naphthalene	0.00121	0.000484	0.00067	mg/Kg	1	L633902	08/24/2022	08/25/2022	
Pyrene	0.00199	0.000643	0.00067	"	"	"	"	"	

Surrogate: 2-Fluorobiphenyl	45.4 %		33-115			"	"	"	
Surrogate: 4-Terphenyl-d14	53 %		33-122			"	"	"	
Surrogate: Nitrobenzene-d5	47.9 %		29-110			"	"	"	

pH in Soil by 9045D

pH	7.88			pH Units	1	B2H2320	08/23/2022	08/24/2022	
----	------	--	--	----------	---	---------	------------	------------	--

SAR by 20B Saturated Paste

SAR	0.309			SAR	1	B2H2319	08/23/2022	08/24/2022	
-----	-------	--	--	-----	---	---------	------------	------------	--

Specific Conductance Mod. 9050A

Specific Conductance (EC)	0.701		0.00500	mmhos/cm	1	B2H2320	08/23/2022	08/24/2022	
---------------------------	-------	--	---------	----------	---	---------	------------	------------	--

Table 915 metals by EPA 6020B

Arsenic	2.66		0.0862	mg/kg	5	B2I0903	09/09/2022	09/12/2022	
Barium	55.4		8.62	"	"	"	"	"	
Cadmium	0.284		0.0862	"	"	"	"	"	

Origins Laboratory, Inc.



The results in this report apply to the samples analyzed in accordance with the chain of custody document. This analytical report must be reproduced in its entirety.

Eagle Environmental Consulting, Inc.
8000 W 44th Ave
Wheat Ridge CO 80033

Martin C Eckert III
Project Number: [none]
Project: Noble - Gittlein, L 6-3

WH-FS-01@6'

8/19/2022 8:23:00AM

Analyte	Result	Min Detection Limit	Reporting Limit	Units	Dilution	Batch	Prepared	Analyzed	Notes
---------	--------	---------------------	-----------------	-------	----------	-------	----------	----------	-------

Origins Laboratory, Inc.
Y208493-01 (Soil)

Table 915 metals by EPA 6020B

Copper	12.9		8.62	mg/kg	5	B210903	09/09/2022	09/12/2022	
Lead	89.4		8.62	"	"	"	"	"	
Nickel	ND		8.62	"	"	"	"	"	U
Selenium	0.156		0.0862	"	"	"	"	"	
Silver	0.147		0.0862	"	"	"	"	"	
Zinc	ND		86.2	"	"	"	"	"	U

Total Metals by 7196A

Chromium, Hexavalent	ND	0.244	0.5	mg/Kg	1	L637535	08/19/2022	09/15/2022	
----------------------	----	-------	-----	-------	---	---------	------------	------------	--

Origins Laboratory, Inc.



The results in this report apply to the samples analyzed in accordance with the chain of custody document. This analytical report must be reproduced in its entirety.

Eagle Environmental Consulting, Inc.
8000 W 44th Ave
Wheat Ridge CO 80033

Martin C Eckert III
Project Number: [none]
Project: Noble - Gittlein, L 6-3

Extractable Petroleum Hydrocarbons by 8015D - Quality Control
Origins Laboratory, Inc.

Analyte	Result	Reporting Limit	Units	Spike Level	Source Result	%REC	%REC Limits	RPD	RPD Limit	Notes
Batch B2H2214 - EPA 3550B										
Blank (B2H2214-BLK1)					Prepared: 08/22/2022 Analyzed: 08/22/2022					
Diesel (C10-C28)	ND	25.0	mg/kg							U
Residual Range Organics (C28-C40)	ND	100	"							U
Surrogate: o-Terphenyl	27		"	24.9		108	50-150			

Origins Laboratory, Inc.



The results in this report apply to the samples analyzed in accordance with the chain of custody document. This analytical report must be reproduced in its entirety.

Eagle Environmental Consulting, Inc.
8000 W 44th Ave
Wheat Ridge CO 80033

Martin C Eckert III
Project Number: [none]
Project: Noble - Gittlein, L 6-3

Extractable Petroleum Hydrocarbons by 8015D - Quality Control
Origins Laboratory, Inc.

Analyte	Result	Reporting Limit	Units	Spike Level	Source Result	%REC	%REC Limits	RPD	RPD Limit	Notes
---------	--------	-----------------	-------	-------------	---------------	------	-------------	-----	-----------	-------

Batch B2H2214 - EPA 3550B

LCS (B2H2214-BS1)

Prepared: 08/22/2022 Analyzed: 08/22/2022

Diesel (C10-C28)	1070	50.0	mg/kg	1000		107	70-130			
Residual Range Organics (C28-C40)	944	200	"	1000		94.4	70-130			
Surrogate: o-Terphenyl	55		"	49.8		111	50-150			

Origins Laboratory, Inc.



The results in this report apply to the samples analyzed in accordance with the chain of custody document. This analytical report must be reproduced in its entirety.

Eagle Environmental Consulting, Inc.
8000 W 44th Ave
Wheat Ridge CO 80033

Martin C Eckert III
Project Number: [none]
Project: Noble - Gittlein, L 6-3

Extractable Petroleum Hydrocarbons by 8015D - Quality Control
Origins Laboratory, Inc.

Analyte	Result	Reporting Limit	Units	Spike Level	Source Result	%REC	%REC Limits	RPD	RPD Limit	Notes
---------	--------	-----------------	-------	-------------	---------------	------	-------------	-----	-----------	-------

Batch B2H2214 - EPA 3550B

Matrix Spike (B2H2214-MS1)		Source: Y208443-10			Prepared: 08/22/2022 Analyzed: 08/22/2022					
Diesel (C10-C28)	1220	50.0	mg/kg	1000	ND	122	70-130			
Residual Range Organics (C28-C40)	1190	200	"	1000	ND	119	70-130			
Surrogate: o-Terphenyl	62		"	49.8		124	50-150			

Origins Laboratory, Inc.



The results in this report apply to the samples analyzed in accordance with the chain of custody document. This analytical report must be reproduced in its entirety.

Eagle Environmental Consulting, Inc.
8000 W 44th Ave
Wheat Ridge CO 80033

Martin C Eckert III
Project Number: [none]
Project: Noble - Gittlein, L 6-3

Extractable Petroleum Hydrocarbons by 8015D - Quality Control
Origins Laboratory, Inc.

Analyte	Result	Reporting Limit	Units	Spike Level	Source Result	%REC	%REC Limits	RPD	RPD Limit	Notes
Batch B2H2214 - EPA 3550B										
Matrix Spike Dup (B2H2214-MSD1)			Source: Y208443-10		Prepared: 08/22/2022 Analyzed: 08/22/2022					
Diesel (C10-C28)	1160	50.0	mg/kg	1000	ND	116	70-130	5.13	35	
Residual Range Organics (C28-C40)	1170	200	"	1000	ND	117	70-130	1.73	35	
Surrogate: o-Terphenyl	59		"	49.8		119	50-150			

Origins Laboratory, Inc.



The results in this report apply to the samples analyzed in accordance with the chain of custody document. This analytical report must be reproduced in its entirety.

Eagle Environmental Consulting, Inc.
8000 W 44th Ave
Wheat Ridge CO 80033

Martin C Eckert III
Project Number: [none]
Project: Noble - Gittlein, L 6-3

Extractable Petroleum Hydrocarbons by 8015D - Quality Control

Origins Laboratory, Inc.

Analyte	Result	Reporting Limit	Units	Spike Level	Source Result	%REC	%REC Limits	RPD	RPD Limit	Notes
Batch B2H2309 - EPA 5030 (soil)										
Blank (B2H2309-BLK1)					Prepared: 08/23/2022 Analyzed: 08/26/2022					
1,2,4-Trimethylbenzene	ND	0.00200	mg/kg							U
1,3,5-Trimethylbenzene	ND	0.00200	"							U
Benzene	ND	0.00200	"							U
Ethylbenzene	ND	0.00200	"							U
Naphthalene	ND	0.00380	"							U
Toluene	ND	0.00200	"							U
Xylenes, total	ND	0.00200	"							U
Gasoline Range Hydrocarbons	ND	0.200	"							U
Surrogate: 1,2-Dichloroethane-d4	0.13		"	0.125		104	70-130			
Surrogate: Toluene-d8	0.13		"	0.125		102	70-130			
Surrogate: 4-Bromofluorobenzene	0.12		"	0.125		93.0	70-130			

Origins Laboratory, Inc.



The results in this report apply to the samples analyzed in accordance with the chain of custody document. This analytical report must be reproduced in its entirety.

Eagle Environmental Consulting, Inc.
8000 W 44th Ave
Wheat Ridge CO 80033

Martin C Eckert III
Project Number: [none]
Project: Noble - Gittlein, L 6-3

Volatile Organic Compounds by GC/MS SW846 8260D - Quality Control
Origins Laboratory, Inc.

Analyte	Result	Reporting Limit	Units	Spike Level	Source Result	%REC	%REC Limits	RPD	RPD Limit	Notes
Batch B2H2309 - EPA 5030 (soil)										
LCS (B2H2309-BS1)					Prepared: 08/23/2022 Analyzed: 08/26/2022					
1,2,4-Trimethylbenzene	0.0956	0.00200	mg/kg	0.100		95.6	70-130			
1,3,5-Trimethylbenzene	0.0975	0.00200	"	0.100		97.5	70-130			
Benzene	0.103	0.00200	"	0.100		103	70-130			
Ethylbenzene	0.0946	0.00200	"	0.100		94.6	70-130			
Naphthalene	0.0883	0.00380	"	0.100		88.3	70-130			
Toluene	0.0978	0.00200	"	0.100		97.8	70-130			
o-Xylene	0.0950	0.00200	"	0.100		95.0	70-130			
m,p-Xylene	0.192	0.00400	"	0.200		95.8	70-130			
Surrogate: 1,2-Dichloroethane-d4	0.13		"	0.125		101	70-130			
Surrogate: Toluene-d8	0.12		"	0.125		97.2	70-130			
Surrogate: 4-Bromofluorobenzene	0.13		"	0.125		102	70-130			

Origins Laboratory, Inc.



The results in this report apply to the samples analyzed in accordance with the chain of custody document. This analytical report must be reproduced in its entirety.

Eagle Environmental Consulting, Inc.
8000 W 44th Ave
Wheat Ridge CO 80033

Martin C Eckert III
Project Number: [none]
Project: Noble - Gittlein, L 6-3

Volatile Organic Compounds by GC/MS SW846 8260D - Quality Control
Origins Laboratory, Inc.

Analyte	Result	Reporting Limit	Units	Spike Level	Source Result	%REC	%REC Limits	RPD	RPD Limit	Notes
---------	--------	-----------------	-------	-------------	---------------	------	-------------	-----	-----------	-------

Batch B2H2309 - EPA 5030 (soil)

Matrix Spike (B2H2309-MS1)		Source: Y208490-01			Prepared: 08/23/2022 Analyzed: 08/26/2022					
1,2,4-Trimethylbenzene	0.0741	0.00200	mg/kg	0.100	ND	74.1	70-130			
1,3,5-Trimethylbenzene	0.0753	0.00200	"	0.100	ND	75.3	70-130			
Benzene	0.0989	0.00200	"	0.100	ND	98.9	70-130			
Ethylbenzene	0.0840	0.00200	"	0.100	ND	84.0	70-130			
Naphthalene	0.0719	0.00380	"	0.100	ND	71.9	70-130			
Toluene	0.0884	0.00200	"	0.100	ND	88.4	70-130			
o-Xylene	0.0863	0.00200	"	0.100	ND	86.3	70-130			
m,p-Xylene	0.168	0.00400	"	0.200	ND	84.0	70-130			
Surrogate: 1,2-Dichloroethane-d4	0.13		"	0.125		104	70-130			
Surrogate: Toluene-d8	0.12		"	0.125		96.3	70-130			
Surrogate: 4-Bromofluorobenzene	0.13		"	0.125		105	70-130			

Origins Laboratory, Inc.



The results in this report apply to the samples analyzed in accordance with the chain of custody document. This analytical report must be reproduced in its entirety.

Eagle Environmental Consulting, Inc.
8000 W 44th Ave
Wheat Ridge CO 80033

Martin C Eckert III
Project Number: [none]
Project: Noble - Gittlein, L 6-3

Volatile Organic Compounds by GC/MS SW846 8260D - Quality Control
Origins Laboratory, Inc.

Analyte	Result	Reporting Limit	Units	Spike Level	Source Result	%REC	%REC Limits	RPD	RPD Limit	Notes
Batch B2H2309 - EPA 5030 (soil)										
Matrix Spike Dup (B2H2309-MSD1)										
					Source: Y208490-01					
					Prepared: 08/23/2022					Analyzed: 08/26/2022
1,2,4-Trimethylbenzene	0.0837	0.00200	mg/kg	0.100	ND	83.7	70-130	12.2	20	
1,3,5-Trimethylbenzene	0.0844	0.00200	"	0.100	ND	84.4	70-130	11.4	20	
Benzene	0.109	0.00200	"	0.100	ND	109	70-130	9.37	20	
Ethylbenzene	0.0899	0.00200	"	0.100	ND	89.9	70-130	6.72	20	
Naphthalene	0.0904	0.00380	"	0.100	ND	90.4	70-130	22.9	20	QR-02
Toluene	0.0968	0.00200	"	0.100	ND	96.8	70-130	9.07	20	
o-Xylene	0.0929	0.00200	"	0.100	ND	92.9	70-130	7.41	20	
m,p-Xylene	0.170	0.00400	"	0.200	ND	85.2	70-130	1.41	20	
Surrogate: 1,2-Dichloroethane-d4	0.13		"	0.125		106	70-130			
Surrogate: Toluene-d8	0.12		"	0.125		96.1	70-130			
Surrogate: 4-Bromofluorobenzene	0.13		"	0.125		102	70-130			

Origins Laboratory, Inc.



The results in this report apply to the samples analyzed in accordance with the chain of custody document. This analytical report must be reproduced in its entirety.

Eagle Environmental Consulting, Inc.
8000 W 44th Ave
Wheat Ridge CO 80033

Martin C Eckert III
Project Number: [none]
Project: Noble - Gittlein, L 6-3

Volatile Organic Compounds by GC/MS SW846 8260D - Quality Control
Origins Laboratory, Inc.

Analyte	Result	Reporting Limit	Units	Spike Level	Source Result	%REC	%REC Limits	RPD	RPD Limit	Notes
---------	--------	-----------------	-------	-------------	---------------	------	-------------	-----	-----------	-------

Metals by SM 3500 Series Methods - Quality Control
Origins Laboratory, Inc.

Analyte	Result	Reporting Limit	Units	Spike Level	Source Result	%REC	%REC Limits	RPD	RPD Limit	Notes
---------	--------	-----------------	-------	-------------	---------------	------	-------------	-----	-----------	-------

Batch B2I0903 - Default Prep Metals

Blank (B2I0903-BLK1)

Prepared: 09/09/2022 Analyzed: 09/12/2022

Arsenic	ND	0.000100	mg/kg							U
Barium	ND	0.0100	"							U
Cadmium	ND	0.000100	"							U
Copper	ND	0.0100	"							U
Lead	ND	0.0100	"							U
Nickel	ND	0.0100	"							U
Selenium	ND	0.000100	"							U
Silver	ND	0.000100	"							U
Zinc	ND	0.100	"							U

LCS (B2I0903-BS1)

Prepared: 09/09/2022 Analyzed: 09/12/2022

Arsenic	0.0508	0.000100	mg/kg	0.0500		102	80-120
Barium	5.10	0.0100	"	5.00		102	80-120
Cadmium	0.0528	0.000100	"	0.0500		106	80-120
Copper	0.554	0.0100	"	0.500		111	80-120
Lead	0.0533	0.0100	"	0.0500		107	80-120
Nickel	0.0511	0.0100	"	0.0500		102	80-120
Selenium	0.0490	0.000100	"	0.0500		98.0	80-120
Silver	0.0552	0.000100	"	0.0500		110	80-120
Zinc	0.519	0.100	"	0.500		104	80-120

Matrix Spike (B2I0903-MS1)

Source: Y209117-01

Prepared: 09/09/2022 Analyzed: 09/12/2022

Origins Laboratory, Inc.



The results in this report apply to the samples analyzed in accordance with the chain of custody document. This analytical report must be reproduced in its entirety.

Eagle Environmental Consulting, Inc.
8000 W 44th Ave
Wheat Ridge CO 80033

Martin C Eckert III
Project Number: [none]
Project: Noble - Gittlein, L 6-3

Metals by SM 3500 Series Methods - Quality Control

Origins Laboratory, Inc.

Analyte	Result	Reporting Limit	Units	Spike Level	Source Result	%REC	%REC Limits	RPD	RPD Limit	Notes
---------	--------	-----------------	-------	-------------	---------------	------	-------------	-----	-----------	-------

Batch B2I0903 - Default Prep Metals

Matrix Spike (B2I0903-MS1)		Source: Y209117-01			Prepared: 09/09/2022 Analyzed: 09/12/2022					
Arsenic	9.35	0.0789	mg/kg	7.89	1.25	103	75-125			
Barium	828	7.89	"	789	11.7	103	75-125			
Cadmium	8.39	0.0789	"	7.89	0.0266	106	75-125			
Copper	89.0	7.89	"	78.9	2.12	110	75-125			
Lead	10.6	7.89	"	7.89	2.86	97.7	75-125			
Nickel	9.81	7.89	"	7.89	1.64	104	75-125			
Selenium	7.48	0.0789	"	7.89	0.0466	94.2	75-125			
Silver	8.69	0.0789	"	7.89	0.00951	110	75-125			
Zinc	89.9	78.9	"	78.9	9.03	102	75-125			
Matrix Spike Dup (B2I0903-MSD1)		Source: Y209117-01			Prepared: 09/09/2022 Analyzed: 09/12/2022					
Arsenic	9.85	0.0817	mg/kg	8.17	1.25	105	75-125	5.21	20	
Barium	897	8.17	"	817	11.7	108	75-125	8.00	20	
Cadmium	8.90	0.0817	"	8.17	0.0266	109	75-125	5.91	20	
Copper	95.6	8.17	"	81.7	2.12	114	75-125	7.15	20	
Lead	10.6	8.17	"	8.17	2.86	94.4	75-125	0.0767	20	
Nickel	10.2	8.17	"	8.17	1.64	105	75-125	4.01	20	
Selenium	8.36	0.0817	"	8.17	0.0466	102	75-125	11.1	20	
Silver	9.20	0.0817	"	8.17	0.00951	113	75-125	5.78	20	
Zinc	97.5	81.7	"	81.7	9.03	108	75-125	8.10	20	

Origins Laboratory, Inc.



The results in this report apply to the samples analyzed in accordance with the chain of custody document. This analytical report must be reproduced in its entirety.

Eagle Environmental Consulting, Inc.
8000 W 44th Ave
Wheat Ridge CO 80033

Martin C Eckert III
Project Number: [none]
Project: Noble - Gittlein, L 6-3

Classical Chemistry Parameters - Quality Control

Origins Laboratory, Inc.

Analyte	Result	Reporting Limit	Units	Spike Level	Source Result	%REC	%REC Limits	RPD	RPD Limit	Notes
---------	--------	-----------------	-------	-------------	---------------	------	-------------	-----	-----------	-------

Batch B2H2202 - Default Prep Metals

Blank (B2H2202-BLK1)

Prepared: 08/22/2022 Analyzed: 08/23/2022

Boron ND 0.100 mg/L

Duplicate (B2H2202-DUP1)

Source: Y208472-11

Prepared: 08/22/2022 Analyzed: 08/23/2022

Boron 0.990 0.0990 mg/L 1.07 8.11 50

Batch B2H2319 - Default Prep Metals

Blank (B2H2319-BLK1)

Prepared: 08/23/2022 Analyzed: 08/24/2022

SAR 0.00 SAR

Calcium PPM ND 10.0 mg/L

Magnesium PPM ND 10.0 "

Sodium PPM ND 10.0 "

Duplicate (B2H2319-DUP1)

Source: Y208492-01

Prepared: 08/23/2022 Analyzed: 08/24/2022

SAR 0.00 SAR 0.846 200 200

Calcium PPM 581 10.0 mg/L 612 5.26 50

Magnesium PPM 91.9 10.0 " 102 9.96 50

Sodium PPM 88.9 10.0 " 85.7 3.62 50

Origins Laboratory, Inc.



The results in this report apply to the samples analyzed in accordance with the chain of custody document. This analytical report must be reproduced in its entirety.

Eagle Environmental Consulting, Inc.
8000 W 44th Ave
Wheat Ridge CO 80033

Martin C Eckert III
Project Number: [none]
Project: Noble - Gittlein, L 6-3

Saturated Paste - Quality Control
Origins Laboratory, Inc.

Analyte	Result	Reporting Limit	Units	Spike Level	Source Result	%REC	%REC Limits	RPD	RPD Limit	Notes
Batch B2H2320 - NO PREP										
Blank (B2H2320-BLK1)					Prepared: 08/23/2022 Analyzed: 08/24/2022					
pH	0.00		pH Units							
Specific Conductance (EC)	ND	0.00500	mmhos/cm							
Duplicate (B2H2320-DUP1)					Source: Y208492-01 Prepared: 08/23/2022 Analyzed: 08/24/2022					
pH	7.83		pH Units		7.65			2.33	25	
Specific Conductance (EC)	3.36	0.00500	mmhos/cm		3.30			1.80	25	

Origins Laboratory, Inc.



The results in this report apply to the samples analyzed in accordance with the chain of custody document. This analytical report must be reproduced in its entirety.

Eagle Environmental Consulting, Inc.
8000 W 44th Ave
Wheat Ridge CO 80033

Martin C Eckert III
Project Number: [none]
Project: Noble - Gittlein, L 6-3

Total Metals by 7196A - Quality Control Waypoint Analytical, LLC.

Analyte	Result	Reporting Limit	Units	Spike Level	Source Result	%REC	%REC Limits	RPD	RPD Limit	Notes
Batch L637535 -										
DUP (L 97801-DUP)		Source: 97801			Prepared: Analyzed: 09/15/2022					
Chromium, Hexavalent	ND	0.514	mg/Kg		<0.514	-		0	20	
MS (L 97801-MS)		Source: 97801			Prepared: Analyzed: 09/15/2022					
Chromium, Hexavalent	35.3	2.58	mg/Kg	41.3	< 0.252	85	75-125			
MSD (L 97801-MSD)		Source: 97801			Prepared: Analyzed: 09/15/2022					
Chromium, Hexavalent	581	50.9	mg/Kg	689	<24.8	84	75-125			
LCS (LCS)					Prepared: Analyzed: 09/15/2022					
Chromium, Hexavalent	7.03	0.5	mg/Kg	8		88	75-125			
LRB (LRB)					Prepared: Analyzed: 09/15/2022					
Chromium, Hexavalent	ND	0.5	mg/Kg							

Origins Laboratory, Inc.



The results in this report apply to the samples analyzed in accordance with the chain of custody document. This analytical report must be reproduced in its entirety.

Eagle Environmental Consulting, Inc.
8000 W 44th Ave
Wheat Ridge CO 80033

Martin C Eckert III
Project Number: [none]
Project: Noble - Gittlein, L 6-3

PAH by 8270D SIM - Quality Control
Waypoint Analytical, LLC.

Analyte	Result	Reporting Limit	Units	Spike Level	Source Result	%REC	%REC Limits	RPD	RPD Limit	Notes
---------	--------	-----------------	-------	-------------	---------------	------	-------------	-----	-----------	-------

Batch L633902 - 3550B

MSD (L 90516-MSD-L633902)		Source: 90516			Prepared: 08/24/2022 Analyzed: 08/25/2022					
Pyrene	0.261	0.000643	mg/Kg	0.163	<0.000643	160	30-130	55.8	30	*
Dibenz(a,h)anthracene	0.244	0.000614	"	0.163	<0.000614	150	30-130	55.4	30	*
Naphthalene	0.215	0.000484	"	0.163	<0.000484	132	30-130	54.4	30	*
Acenaphthene	0.239	0.000304	"	0.163	<0.000304	147	30-130	58.3	30	*
1-Methylnaphthalene	0.221	0.000364	"	0.163	<0.000364	136	30-130	56.2	30	*
Fluorene	0.251	0.000286	"	0.163	<0.000286	154	30-130	57.4	30	*
Indeno(1,2,3-cd)pyrene	0.214	0.000627	"	0.163	<0.000627	131	30-130	52.5	30	*
Anthracene	0.251	0.000334	"	0.163	<0.000334	154	30-130	57.4	30	*
Benzo(a)anthracene	0.245	0.000493	"	0.163	<0.000493	150	30-130	55.2	30	*
Benzo(a)pyrene	0.281	0.000468	"	0.163	<0.000468	172	30-130	54.8	30	*
Benzo(b)fluoranthene	0.225	0.000585	"	0.163	<0.000585	138	30-130	52.8	30	*
Benzo(k)fluoranthene	0.269	0.000437	"	0.163	<0.000437	165	30-130	55.5	30	*
Chrysene	0.261	0.000624	"	0.163	<0.000624	160	30-130	57.7	30	*
Fluoranthene	0.259	0.000394	"	0.163	<0.000394	159	30-130	55.8	30	*
2-Methylnaphthalene	0.21	0.000645	"	0.163	<0.000645	129	30-130	52.2	30	*
Surrogate: Nitrobenzene-d5	129		"	0.327	190	129	29-110			*
Surrogate: 2-Fluorobiphenyl	152		"	0.327	183	152	33-115			*
Surrogate: 4-Terphenyl-d14	140		"	0.327	221	140	33-122			*

MS (L 90516-MS-L633902)		Source: 90516			Prepared: 08/24/2022 Analyzed: 08/25/2022					
Pyrene	0.147	0.000643	mg/Kg	0.163	<0.000643	90.1	30-130			
Naphthalene	0.123	0.000484	"	0.163	<0.000484	75.4	30-130			
Indeno(1,2,3-cd)pyrene	0.125	0.000627	"	0.163	<0.000627	76.6	30-130			
Chrysene	0.144	0.000624	"	0.163	<0.000624	88.3	30-130			
Fluorene	0.139	0.000286	"	0.163	<0.000286	85.2	30-130			
Fluoranthene	0.146	0.000394	"	0.163	<0.000394	89.5	30-130			
Dibenz(a,h)anthracene	0.138	0.000614	"	0.163	<0.000614	84.6	30-130			

Origins Laboratory, Inc.



The results in this report apply to the samples analyzed in accordance with the chain of custody document. This analytical report must be reproduced in its entirety.

Eagle Environmental Consulting, Inc.
8000 W 44th Ave
Wheat Ridge CO 80033

Martin C Eckert III
Project Number: [none]
Project: Noble - Gittlein, L 6-3

PAH by 8270D SIM - Quality Control
Waypoint Analytical, LLC.

Analyte	Result	Reporting Limit	Units	Spike Level	Source Result	%REC	%REC Limits	RPD	RPD Limit	Notes
---------	--------	-----------------	-------	-------------	---------------	------	-------------	-----	-----------	-------

Batch L633902 - 3550B

MS (L 90516-MS-L633902)		Source: 90516			Prepared: 08/24/2022 Analyzed: 08/25/2022					
1-Methylnaphthalene	0.124	0.000364	mg/Kg	0.163	<0.000364	76	30-130			
Benzo(b)fluoranthene	0.131	0.000585	"	0.163	<0.000585	80.3	30-130			
Benzo(a)pyrene	0.16	0.000468	"	0.163	<0.000468	98.1	30-130			
Benzo(a)anthracene	0.139	0.000493	"	0.163	<0.000493	85.2	30-130			
Acenaphthene	0.131	0.000304	"	0.163	<0.000304	80.3	30-130			
2-Methylnaphthalene	0.123	0.000645	"	0.163	<0.000645	75.4	30-130			
Anthracene	0.139	0.000334	"	0.163	<0.000334	85.2	30-130			
Benzo(k)fluoranthene	0.152	0.000437	"	0.163	<0.000437	93.2	30-130			
Surrogate: 4-Terphenyl-d14	85.5		"	0.326	221	85.5	33-122			
Surrogate: Nitrobenzene-d5	77.3		"	0.326	190	77.3	29-110			
Surrogate: 2-Fluorobiphenyl	78.5		"	0.326	183	78.5	33-115			

LCS (LCS-L633902)		Prepared: 08/24/2022 Analyzed: 08/25/2022								
Chrysene	0.123	0.000624	mg/Kg	0.167		73.6	30-130			
Dibenz(a,h)anthracene	0.132	0.000614	"	0.167		79	30-130			
Fluoranthene	0.126	0.000394	"	0.167		75.4	30-130			
Indeno(1,2,3-cd)pyrene	0.119	0.000627	"	0.167		71.2	30-130			
Benzo(k)fluoranthene	0.117	0.000437	"	0.167		70	30-130			
Pyrene	0.124	0.000643	"	0.167		74.2	30-130			
Fluorene	0.114	0.000286	"	0.167		68.2	30-130			
1-Methylnaphthalene	0.105	0.000364	"	0.167		62.8	30-130			
Benzo(a)pyrene	0.137	0.000468	"	0.167		82	30-130			
Benzo(a)anthracene	0.121	0.000493	"	0.167		72.4	30-130			
Anthracene	0.11	0.000334	"	0.167		65.8	30-130			
Acenaphthene	0.108	0.000304	"	0.167		64.6	30-130			
2-Methylnaphthalene	0.106	0.000645	"	0.167		63.4	30-130			
Naphthalene	0.103	0.000484	"	0.167		61.6	30-130			

Origins Laboratory, Inc.



The results in this report apply to the samples analyzed in accordance with the chain of custody document. This analytical report must be reproduced in its entirety.

Eagle Environmental Consulting, Inc.
8000 W 44th Ave
Wheat Ridge CO 80033

Martin C Eckert III
Project Number: [none]
Project: Noble - Gittlein, L 6-3

PAH by 8270D SIM - Quality Control
Waypoint Analytical, LLC.

Analyte	Result	Reporting Limit	Units	Spike Level	Source Result	%REC	%REC Limits	RPD	RPD Limit	Notes
Batch L633902 - 3550B										
LCS (LCS-L633902)					Prepared: 08/24/2022 Analyzed: 08/25/2022					
Benzo(b)fluoranthene	0.125	0.000585	mg/Kg	0.167		74.8	30-130			
Surrogate: Nitrobenzene-d5	67.5		"	0.333		67.5	29-110			
Surrogate: 4-Terphenyl-d14	72.3		"	0.333		72.3	33-122			
Surrogate: 2-Fluorobiphenyl	66.9		"	0.333		66.9	33-115			
LRB (LRB-L633902)					Prepared: 08/24/2022 Analyzed: 08/25/2022					
Dibenz(a,h)anthracene	ND	0.00067	mg/Kg				-			
Fluoranthene	ND	0.00067	"				-			
Fluorene	ND	0.00067	"				-			
Indeno(1,2,3-cd)pyrene	ND	0.00067	"				-			
Naphthalene	ND	0.00067	"				-			
Chrysene	ND	0.00067	"				-			
Pyrene	ND	0.00067	"				-			
Acenaphthene	ND	0.00067	"				-			
Benzo(k)fluoranthene	ND	0.00067	"				-			
Benzo(b)fluoranthene	ND	0.00067	"				-			
Benzo(a)pyrene	ND	0.00067	"				-			
Anthracene	ND	0.00067	"				-			
2-Methylnaphthalene	ND	0.00067	"				-			
1-Methylnaphthalene	ND	0.00067	"				-			
Benzo(a)anthracene	ND	0.00067	"				-			
Surrogate: Nitrobenzene-d5	61.2		"	0.333		61.2	29-110			
Surrogate: 4-Terphenyl-d14	69		"	0.333		69	33-122			
Surrogate: 2-Fluorobiphenyl	57		"	0.333		57	33-115			

Origins Laboratory, Inc.



The results in this report apply to the samples analyzed in accordance with the chain of custody document. This analytical report must be reproduced in its entirety.

Eagle Environmental Consulting, Inc.

8000 W 44th Ave

Wheat Ridge CO 80033

Martin C Eckert III

Project Number: [none]

Project: Noble - Gittlein, L 6-3

Notes and Definitions

U Sample is Non-Detect.

QR-02 The RPD result exceeded the QC control limits; however, both percent recoveries were acceptable. Sample results for the QC batch were accepted based on percent recoveries and completeness of QC data.

J Estimated Value. Analyte below reported quantitation limit.

* QC Failure

ND Analyte NOT DETECTED at or above the reporting limit

RPD Relative Percent Difference

All soil results are reported on a wet weight basis.

Origins Laboratory, Inc.



The results in this report apply to the samples analyzed in accordance with the chain of custody document. This analytical report must be reproduced in its entirety.



September 22, 2022

Eagle Environmental Consulting, Inc.

Martin C Eckert III

8000 W 44th Ave

Wheat Ridge CO 80033

Project Name - Noble - HSR - Gittlein, L #6-3

Project Number - [none]

Attached are your analytical results for Noble - HSR - Gittlein, L #6-3 received by Origins Laboratory, Inc. September 13, 2022. This project is associated with Origins project number Y209235-01.

The analytical results in the following report were analyzed under the guidelines of EPA Methods. These methods are identified as follows; "SW" are defined in SW-846, "EPA" are defined in 40CFR part 136 and "SM" are defined in the most current revision of Standard Methods For the Examination of Water and Wastewater.

The analytical results apply specifically to the samples and analyses specified per the attached Chain of Custody. As such, this report shall not be reproduced except in full, without the written approval of Origin's laboratory.

Unless otherwise noted, the analytical results for all soil samples are reported on a wet weight basis. All analytical analyses were performed under NELAP guidelines unless noted by a data qualifier.

Any holding time exceedances, deviations from the method specifications or deviations from Origins Laboratory's Standard Operating Procedures are outlined in the case narrative.

Thank you for selecting Origins for your analytical needs. Please contact us with any questions concerning this report, or if we can help with anything at all.

Origins Laboratory, Inc.
303.433.1322
o-squad@oelabinc.com



1725 Elk Place, Denver, CO 80211 | Phone: 303.433.1322 | Fax: 303.265.9645

Eagle Environmental Consulting, Inc.

8000 W 44th Ave

Wheat Ridge CO 80033

Martin C Eckert III

Project Number: [none]

Project: Noble - HSR - Gittlein, L #6-3

CROSS REFERENCE REPORT

Sample ID	Laboratory ID	Matrix	Date Sampled	Date Received
Background-01@3'	Y209235-01	Soil	August 19, 2022 8:27	09/13/2022 09:37

Chrome VI was cancelled per the client's email on 09/21/2022. JAB

Origins Laboratory, Inc.



The results in this report apply to the samples analyzed in accordance with the chain of custody document. This analytical report must be reproduced in its entirety.

Eagle Environmental Consulting, Inc.
8000 W 44th Ave
Wheat Ridge CO 80033

Martin C Eckert III
Project Number: [none]
Project: Noble - HSR - Gittlein, L #6-3

Origins Laboratory

F-012207-01-R1
Effective Date: 01/09/12

Sample Receipt Checklist

Origins Work Order: Y209235

Client: Eagle Environmental

Client Project ID: HSR-Gittlein, L #6-3

Checklist Completed by: DE

Shipped Via: HO
(UPS, FedEx, Hand Delivered, Pick-up, etc.)

Date/time completed: 09/13/2022

Airbill #: NA

Matrix(s) Received: (Check all that apply): ☒ Soil/Solid ☐ Water ☐ Other: _____

Cooler Number/Temperature: 1 / .9 °C / _____ °C / _____ °C (Describe)

Thermometer ID: T004

Requirement Description	Yes	No	N/A	Comments (if any)
If samples require cooling, was the temperature between 0°C to ≤ 6°C ⁽¹⁾ ?	<input checked="" type="checkbox"/>	<input type="checkbox"/>	<input type="checkbox"/>	
Is there ice present (document if blue ice is used)	<input checked="" type="checkbox"/>	<input type="checkbox"/>	<input type="checkbox"/>	
Are custody seals present on cooler? (if so, document in comments if they are signed and dated, broken or intact)	<input type="checkbox"/>	<input checked="" type="checkbox"/>	<input type="checkbox"/>	
Are custody seals present on each sample container? (if so, document in comments if they are signed and dated, broken or intact)	<input type="checkbox"/>	<input checked="" type="checkbox"/>	<input type="checkbox"/>	
Were all samples received intact ⁽¹⁾ ?	<input checked="" type="checkbox"/>	<input type="checkbox"/>	<input type="checkbox"/>	
Was adequate sample volume provided ⁽¹⁾ ?	<input checked="" type="checkbox"/>	<input type="checkbox"/>	<input type="checkbox"/>	
Are short holding time analytes or samples with HTs due within 48 hours present ⁽¹⁾ ?	<input type="checkbox"/>	<input checked="" type="checkbox"/>	<input type="checkbox"/>	
Is a chain-of-custody (COC) present and filled out completely ⁽¹⁾ ?	<input checked="" type="checkbox"/>	<input type="checkbox"/>	<input type="checkbox"/>	
Does the COC agree with the number and type of sample bottles received ⁽¹⁾ ?	<input checked="" type="checkbox"/>	<input type="checkbox"/>	<input type="checkbox"/>	
Do the sample IDs on the bottle labels match the COC ⁽¹⁾ ?	<input checked="" type="checkbox"/>	<input type="checkbox"/>	<input type="checkbox"/>	
Is the COC properly relinquished by the client with date and time recorded ⁽¹⁾ ?	<input checked="" type="checkbox"/>	<input type="checkbox"/>	<input type="checkbox"/>	
For volatiles in water – is there headspace (> ¼ inch bubble) present? If yes, contact client and note in narrative.	<input type="checkbox"/>	<input type="checkbox"/>	<input checked="" type="checkbox"/>	
Are samples preserved that require preservation and was it checked ⁽¹⁾ ? (note ID of confirmation instrument used in comments) / (preservation is not confirmed for subcontracted analyses in order to insure sample integrity)/(pH <2 for samples preserved with HNO ₃ , HCL, H ₂ SO ₄) / (pH >10 for samples preserved with NaAsO ₂ +NaOH, ZnAc+NaOH)	<input type="checkbox"/>	<input checked="" type="checkbox"/>	<input type="checkbox"/>	
Additional Comments (if any):				

⁽¹⁾If NO, then contact the client before proceeding with analysis and note date/time and person contacted as well as the corrective action to in the additional comments (above) and the case narrative.

Reviewed by (Project Manager) JB

9-14-22
Date/Time Reviewed

Origins Laboratory, Inc.

J. Bynon

The results in this report apply to the samples analyzed in accordance with the chain of custody document. This analytical report must be reproduced in its entirety.

Eagle Environmental Consulting, Inc.
8000 W 44th Ave
Wheat Ridge CO 80033

Martin C Eckert III
Project Number: [none]
Project: Noble - HSR - Gittlein, L #6-3

Background-01@3'

8/19/2022 8:27:00AM

Analyte	Result	Reporting Limit	Units	Dilution	Batch	Analyst	Prepared	Analyzed	Notes
---------	--------	-----------------	-------	----------	-------	---------	----------	----------	-------

Origins Laboratory, Inc. Y209235-01 (Soil)

Table 915 metals by EPA 6020B

Arsenic	2.71	0.0916	mg/kg	5	B211417	CIH	09/14/2022	09/15/2022	
Barium	78.9	9.16	"	"	"	CIH	"	"	
Cadmium	0.111	0.0916	"	"	"	CIH	"	"	
Copper	ND	9.16	"	"	"	CIH	"	"	U
Lead	ND	9.16	"	"	"	CIH	"	"	U
Nickel	ND	9.16	"	"	"	CIH	"	"	U
Selenium	0.166	0.0916	"	"	"	CIH	"	"	
Silver	ND	0.0916	"	"	"	CIH	"	"	U
Zinc	ND	91.6	"	"	"	CIH	"	"	U

Origins Laboratory, Inc.



The results in this report apply to the samples analyzed in accordance with the chain of custody document. This analytical report must be reproduced in its entirety.

Eagle Environmental Consulting, Inc.
8000 W 44th Ave
Wheat Ridge CO 80033

Martin C Eckert III
Project Number: [none]
Project: Noble - HSR - Gittlein, L #6-3

***** DEFAULT GENERAL METHOD *** - Quality Control**
Origins Laboratory, Inc.

Analyte	Result	Reporting Limit	Units	Spike Level	Source Result	%REC	%REC Limits	RPD	RPD Limit	Notes
---------	--------	-----------------	-------	-------------	---------------	------	-------------	-----	-----------	-------

Batch B2I1417 - Default Prep Metals

Blank (B2I1417-BLK1)

Prepared: 09/14/2022 Analyzed: 09/15/2022

Arsenic	ND	0.000100	mg/kg							U
Barium	ND	0.0100	"							U
Cadmium	ND	0.000100	"							U
Copper	ND	0.0100	"							U
Lead	ND	0.0100	"							U
Nickel	ND	0.0100	"							U
Selenium	ND	0.000100	"							U
Silver	ND	0.000100	"							U
Zinc	ND	0.100	"							U

LCS (B2I1417-BS1)

Prepared: 09/14/2022 Analyzed: 09/15/2022

Arsenic	0.0514	0.000100	mg/kg	0.0500	103	80-120
Barium	5.11	0.0100	"	5.00	102	80-120
Cadmium	0.0505	0.000100	"	0.0500	101	80-120
Copper	0.500	0.0100	"	0.500	100	80-120
Lead	0.0501	0.0100	"	0.0500	100	80-120
Nickel	0.0532	0.0100	"	0.0500	106	80-120
Selenium	0.0495	0.000100	"	0.0500	99.0	80-120
Silver	0.0488	0.000100	"	0.0500	97.5	80-120
Zinc	0.498	0.100	"	0.500	99.7	80-120

Matrix Spike (B2I1417-MS1)

Source: Y209228-09

Prepared: 09/14/2022 Analyzed: 09/15/2022

Arsenic	15.2	0.0931	mg/kg	9.31	4.98	109	75-125
Barium	1450	9.31	"	931	343	119	75-125
Cadmium	10.6	0.0931	"	9.31	0.399	109	75-125
Copper	106	9.31	"	93.1	13.5	99.8	75-125
Lead	21.6	9.31	"	9.31	12.4	98.1	75-125

Origins Laboratory, Inc.



The results in this report apply to the samples analyzed in accordance with the chain of custody document. This analytical report must be reproduced in its entirety.

Eagle Environmental Consulting, Inc.
8000 W 44th Ave
Wheat Ridge CO 80033

Martin C Eckert III
Project Number: [none]
Project: Noble - HSR - Gittlein, L #6-3

*** DEFAULT GENERAL METHOD *** - Quality Control
Origins Laboratory, Inc.

Analyte	Result	Reporting Limit	Units	Spike Level	Source Result	%REC	%REC Limits	RPD	RPD Limit	Notes
---------	--------	-----------------	-------	-------------	---------------	------	-------------	-----	-----------	-------

Batch B2I1417 - Default Prep Metals

Matrix Spike (B2I1417-MS1)		Source: Y209228-09			Prepared: 09/14/2022 Analyzed: 09/15/2022					
Nickel	21.0	9.31	mg/kg	9.31	11.1	107	75-125			
Selenium	9.12	0.0931	"	9.31	0.207	95.7	75-125			
Silver	9.88	0.0931	"	9.31	0.156	104	75-125			
Zinc	143	93.1	"	93.1	45.6	105	75-125			
Matrix Spike Dup (B2I1417-MSD1)		Source: Y209228-09			Prepared: 09/14/2022 Analyzed: 09/15/2022					
Arsenic	13.6	0.0840	mg/kg	8.40	4.98	102	75-125	11.1	20	
Barium	1250	8.40	"	840	343	107	75-125	15.0	20	
Cadmium	8.88	0.0840	"	8.40	0.399	101	75-125	17.2	20	
Copper	88.1	8.40	"	84.0	13.5	88.8	75-125	18.9	20	
Lead	21.8	8.40	"	8.40	12.4	112	75-125	1.35	20	
Nickel	18.5	8.40	"	8.40	11.1	88.6	75-125	12.7	20	
Selenium	7.77	0.0840	"	8.40	0.207	90.0	75-125	16.0	20	
Silver	8.35	0.0840	"	8.40	0.156	97.5	75-125	16.9	20	
Zinc	122	84.0	"	84.0	45.6	90.5	75-125	16.1	20	

Origins Laboratory, Inc.



The results in this report apply to the samples analyzed in accordance with the chain of custody document. This analytical report must be reproduced in its entirety.

Eagle Environmental Consulting, Inc.

8000 W 44th Ave

Wheat Ridge CO 80033

Martin C Eckert III

Project Number: [none]

Project: Noble - HSR - Gittlein, L #6-3

Notes and Definitions

U Sample is Non-Detect.

ND Analyte NOT DETECTED at or above the reporting limit

RPD Relative Percent Difference

All soil results are reported at a wet weight basis.

Origins Laboratory, Inc.



The results in this report apply to the samples analyzed in accordance with the chain of custody document. This analytical report must be reproduced in its entirety.