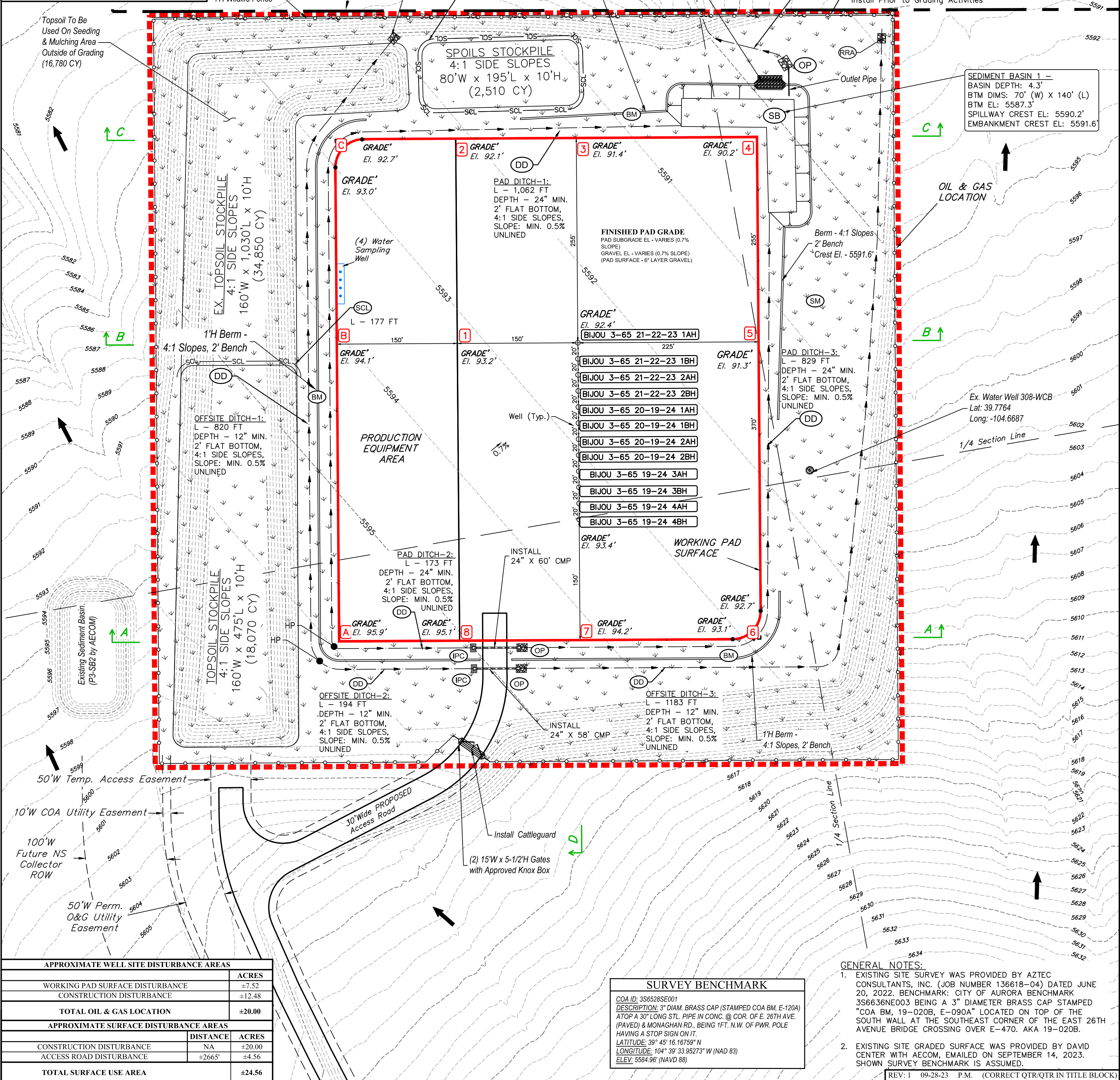


**LEGEND**

HP HIGH POINT ELEVATION  
F.O.7' EL.-17.0' WELL PAD CORNER STAKE  
DESIGN "C" CUT OR "F" FILL AT CORNER STAKE  
EXISTING GROUND ELEV. AT CORNER STAKE (TRUNCATED LESS 5,500 FEET)

DD DIVERSION DITCH  
SB SEDIMENT BASIN  
SM SEEDING AND MULCHING  
BM BERM  
SCL SEDIMENT CONTROL LOG  
IPC RRB FOR CULVERT PROTECTION  
RRA RIP-RAP APRON  
OP OUTLET PROTECTION

FLOW DIRECTION  
PROPOSED WILDLIFE FENCE  
R-O-W  
PROPERTY LINE  
EXISTING MAJOR CONTOUR  
EXISTING MINOR CONTOUR  
WORKING PAD SURFACE  
OIL & GAS LOCATION



APPROXIMATE WELL SITE DISTURBANCE AREAS	
WORKING PAD SURFACE DISTURBANCE	ACRES
CONSTRUCTION DISTURBANCE	±7.52
TOTAL OIL & GAS LOCATION	±20.00
APPROXIMATE SURFACE DISTURBANCE AREAS	
CONSTRUCTION DISTURBANCE	DISTANCE ACRES
ACCESS ROAD DISTURBANCE	NA ±20.00
TOTAL SURFACE USE AREA	±24.56

- NOTES:**
- Rounded corners shown at 35' radius.
  - Contours shown at 1' intervals.
  - Cut/Fill slopes 4:1 (Typ.).
  - Overall Working Pad Surface = 625' x 525'



**UELS, LLC**  
Corporate Office \* 85 South 200 East  
Vernal, UT 84078 \* (435) 789-1017

**SURVEY BENCHMARK**

COA ID: 3S6528SE001  
DESCRIPTION: 3" DIAM. BRASS CAP (STAMPED COA BM, E-120A)  
ATOP A 30" LONG STL. PIPE IN CONC. @ COR. OF E. 26TH AVE.  
(PAVED) & MONAGHAN RD., BEING 1FT. N.W. OF PWR. POLE  
HAVING A STOP SIGN ON IT.  
LATITUDE: 39° 45' 16.16759" N  
LONGITUDE: 104° 39' 33.95273" W (NAD 83)  
ELEV: 5584.96' (NAVD 88)

**GENERAL NOTES:**

1. EXISTING SITE SURVEY WAS PROVIDED BY AZTEC CONSULTANTS, INC. (JOB NUMBER 136618-04) DATED JUNE 20, 2022. BENCHMARK: CITY OF AURORA BENCHMARK 3S6636NE003 BEING A 3" DIAMETER BRASS CAP STAMPED "COA BM, 19-020B, E-090A" LOCATED ON TOP OF THE SOUTH WALL AT THE SOUTHEAST CORNER OF THE EAST 26TH AVENUE BRIDGE CROSSING OVER E-470. AKA 19-020B.
2. EXISTING SITE GRADED SURFACE WAS PROVIDED BY DAVID CENTER WITH AECOM, EMAILED ON SEPTEMBER 14, 2023. SHOWN SURVEY BENCHMARK IS ASSUMED.

REV: 1 09-28-23 P.M. (CORRECT QTR/QTR IN TITLE BLOCK)

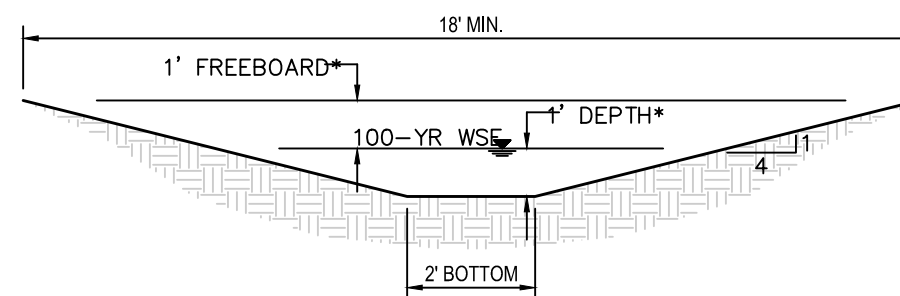
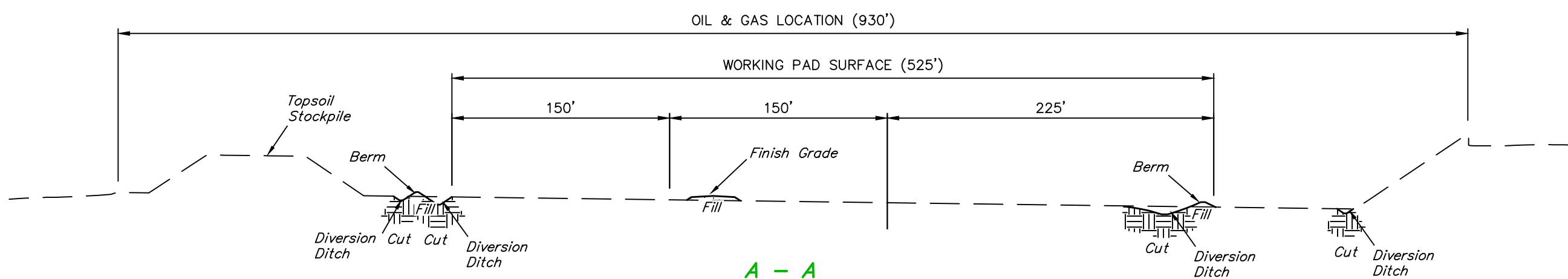
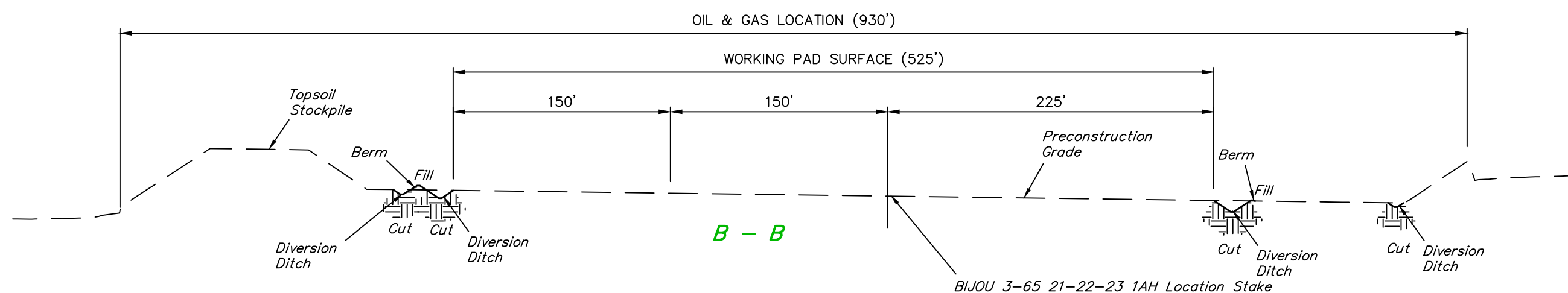
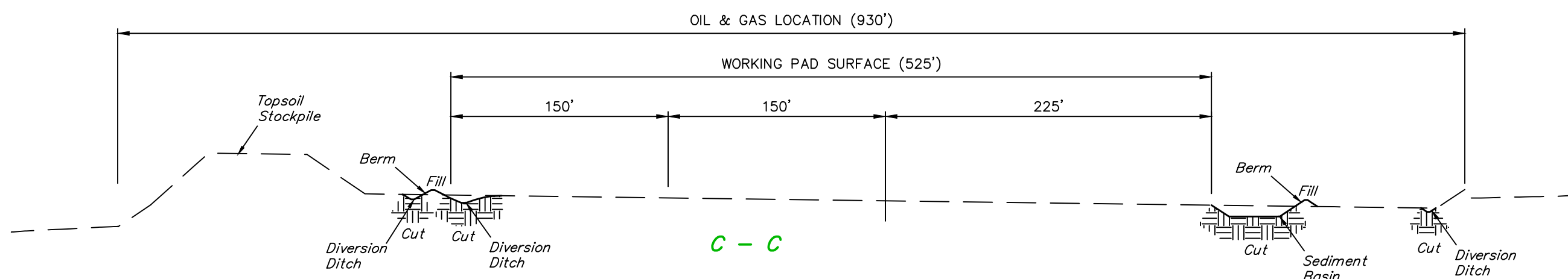
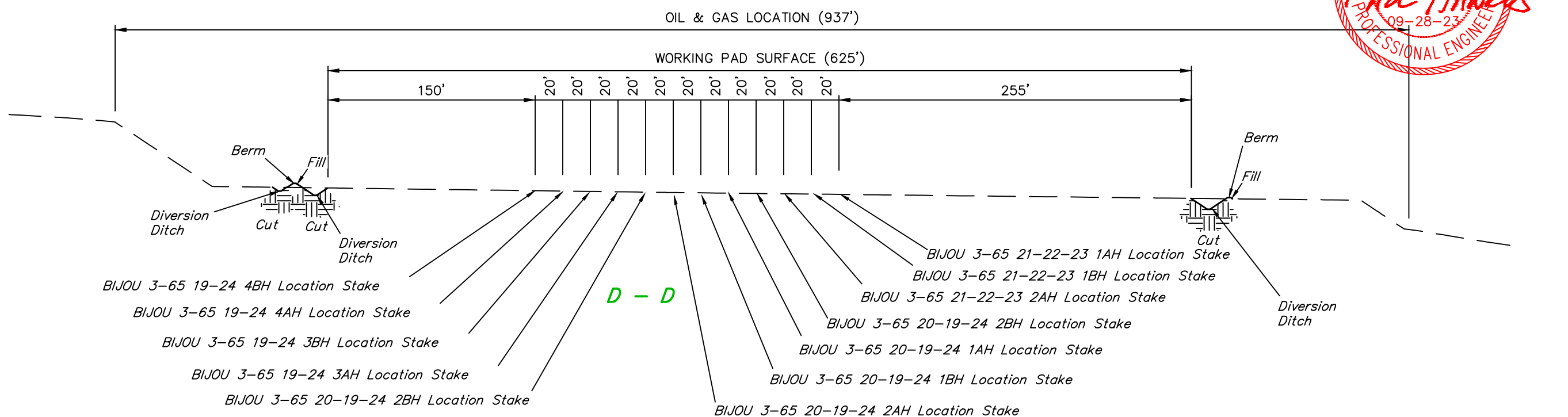
**CRESTONE PEAK  
RESOURCES OPERATING LLC**

**BIJOU 3-65 19-24 NORTH PAD**  
SE 1/4 NW 1/4, SECTION 21, T3S, R65W, 6th P.M.  
ADAMS COUNTY, COLORADO

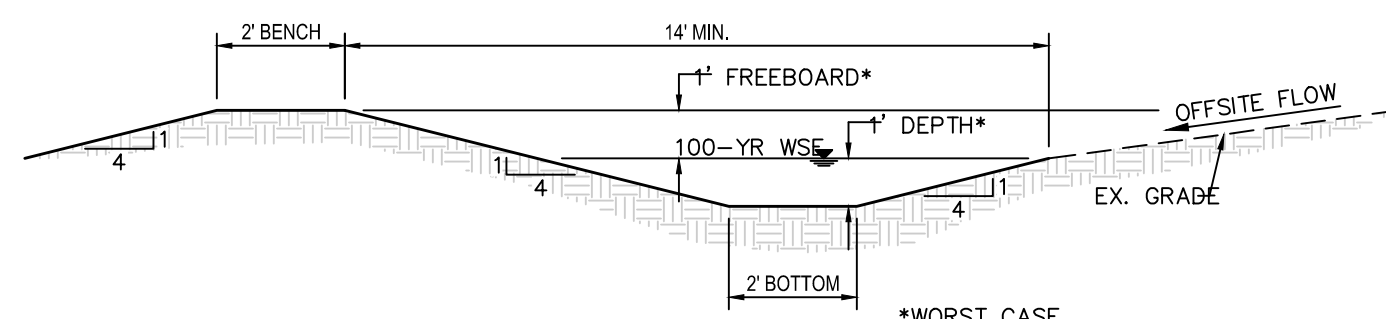
SURVEYED BY	JAYSEN CHILDERS	07-03-23	SCALE
DRAWN BY	K.C.	09-19-23	1" = 80'
<b>CONSTRUCTION LAYOUT - PLAN VIEW</b>			



1" = 30'  
X-Section  
Scale  
1" = 80'



TYPICAL PROPOSED DITCH (≥0.5% GRADE)  
(N.T.S.)



TYPICAL PROPOSED OFFSITE DITCH & BERM (≥0.5% GRADE)  
(N.T.S.)

APPROXIMATE EARTHWORK QUANTITIES	
(13") TOPSOIL STRIPPING	34,850 Cu. Yds.
WELL PAD CUT	2,410 Cu. Yds.
ACCESS ROAD CUT	50 Cu. Yds.
DITCHES & SED BASIN CUT	2,110 Cu. Yds.
<b>TOTAL CUT</b>	<b>39,420 Cu. Yds.</b>
WELL PAD FILL	1,010 Cu. Yds.
ACCESS ROAD FILL	870 Cu. Yds.
DITCHES & SED BASIN FILL	180 Cu. Yds.
<b>TOTAL FILL</b>	<b>2,060 Cu. Yds.</b>
EXCESS MATERIAL	37,360 Cu. Yds.
TOPSOIL USED	16,780 Cu. Yds.
TOPSOIL TO BE STOCKPILED	18,070 Cu. Yds.
<b>SPOILS TO BE STOCKPILED</b>	<b>2,510 Cu. Yds.</b>
GRAVEL BASE ON PAD (6")	6,050 Cu. Yds.
GRAVEL BASE ON ACC RD (6")	1,600 Cu. Yds.

APPROXIMATE WELL SITE DISTURBANCE AREAS	
WORKING PAD SURFACE DISTURBANCE	±7.52 ACRES
CONSTRUCTION DISTURBANCE	±12.48
<b>TOTAL OIL &amp; GAS LOCATION</b>	<b>±20.00</b>
APPROXIMATE SURFACE DISTURBANCE AREAS	
	DISTANCE ACRES
CONSTRUCTION DISTURBANCE	NA ±20.00
ACCESS ROAD DISTURBANCE	±2665' ±4.56
<b>TOTAL SURFACE USE AREA</b>	<b>±24.56</b>

NOTES:

- Fill quantity includes 10% for compaction.
- Calculations based on 13" of topsoil stripping.
- Cut/Fill slopes 4:1 (Typ.).
- Round corners at 35' radius or as needed.



UELS, LLC  
Corporate Office \* 85 South 200 East  
Vernal, UT 84078 \* (435) 789-1017

REV: 1 09-28-23 P.M. (CORRECT QTR/QTR IN TITLE BLOCK)

CRESTONE PEAK  
RESOURCES OPERATING LLC

BIJOU 3-65 19-24 NORTH PAD  
SE 1/4 NW 1/4, SECTION 21, T3S, R65W, 6th P.M.  
ADAMS COUNTY, COLORADO

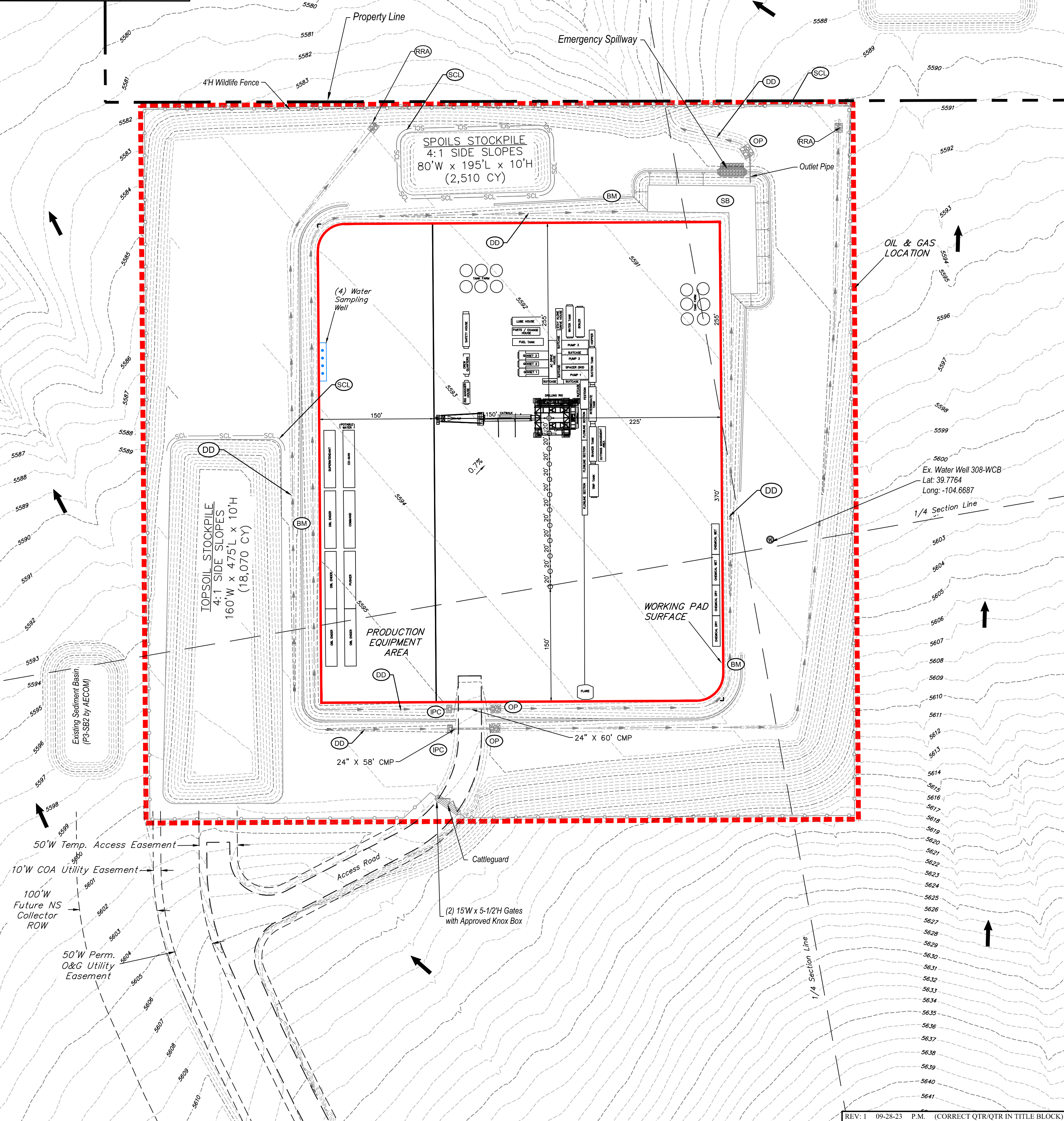
SURVEYED BY	JAYSEN CHILDERS	07-03-23	SCALE
DRAWN BY	K.C.	09-19-23	AS SHOWN

CONSTRUCTION LAYOUT - CROSS SECTIONS



**LEGEND**

- DD DIVERSION DITCH
- SB SEDIMENT BASIN
- BM BERM
- IPC RRB FOR CULVERT PROTECTION
- RRA RIP-RAP APRON
- OP OUTLET PROTECTION
- FLOW DIRECTION
- WILDLIFE FENCE
- R-O-W
- PROPERTY LINE
- EXISTING MAJOR CONTOUR
- EXISTING MINOR CONTOUR
- WORKING PAD SURFACE
- OIL & GAS LOCATION



**NOTES:**

- Rounded corners shown at 35' radius.
- Contours shown at 1' intervals.
- Cut/Fill slopes 4:1 (Typ.).
- Overall Working Pad Surface = 625' x 525'



**UELS, LLC**  
Corporate Office \* 85 South 200 East  
Vernal, UT 84078 \* (435) 789-1017



REV: 1 09-28-23 P.M. (CORRECT QTR/QTR IN TITLE BLOCK)

**CRESTONE PEAK  
RESOURCES OPERATING LLC**

BLJOU 3-65 19-24 NORTH PAD  
SE 1/4 NW 1/4, SECTION 21, T3S, R65W, 6th P.M.  
ADAMS COUNTY, COLORADO

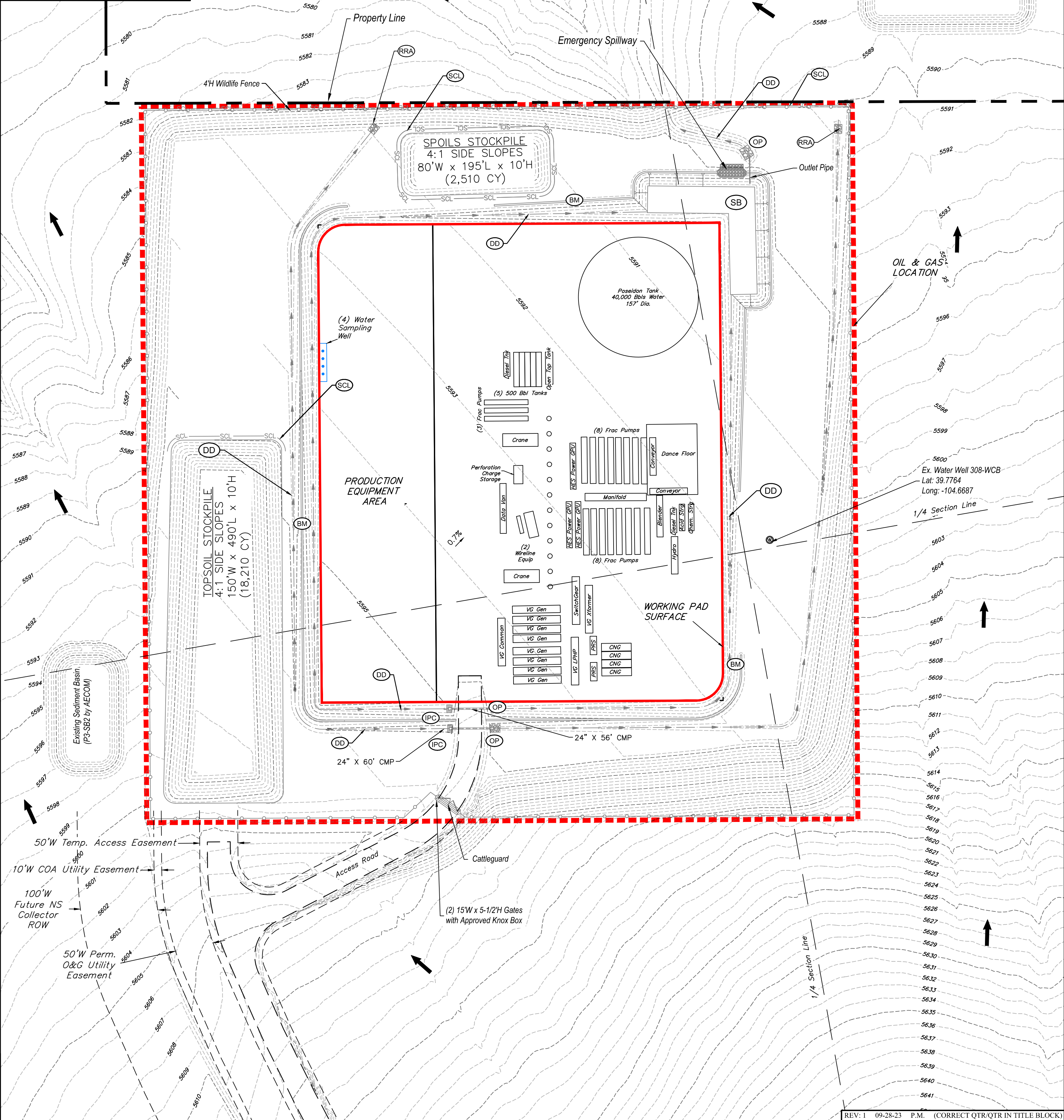
SURVEYED BY	JAYSEN CHILDERS	07-03-23	SCALE
DRAWN BY	K.C.	09-19-23	1" = 80'

**PRELIMINARY DRILL RIG LAYOUT**



**LEGEND**

- DD DIVERSION DITCH
- SB SEDIMENT BASIN
- BM BERM
- IPC RRB FOR CULVERT PROTECTION
- RRA RIP-RAP APRON
- OP OUTLET PROTECTION
- FLOW DIRECTION
- WILDLIFE FENCE
- R-O-W
- PROPERTY LINE
- EXISTING MAJOR CONTOUR
- EXISTING MINOR CONTOUR
- WORKING PAD SURFACE
- OIL & GAS LOCATION



**NOTES:**

- Rounded corners shown at 35' radius.
- Contours shown at 1' intervals.
- Cut/Fill slopes 4:1 (Typ.).
- Overall Working Pad Surface = 625' x 525'



**UELS, LLC**  
Corporate Office \* 85 South 200 East  
Vernal, UT 84078 \* (435) 789-1017



REV: 1 09-28-23 P.M. (CORRECT QTR/QTR IN TITLE BLOCK)

**CRESTONE PEAK  
RESOURCES OPERATING LLC**

**BLJOU 3-65 19-24 NORTH PAD**  
SE 1/4 NW 1/4, SECTION 21, T3S, R65W, 6th P.M.  
ADAMS COUNTY, COLORADO

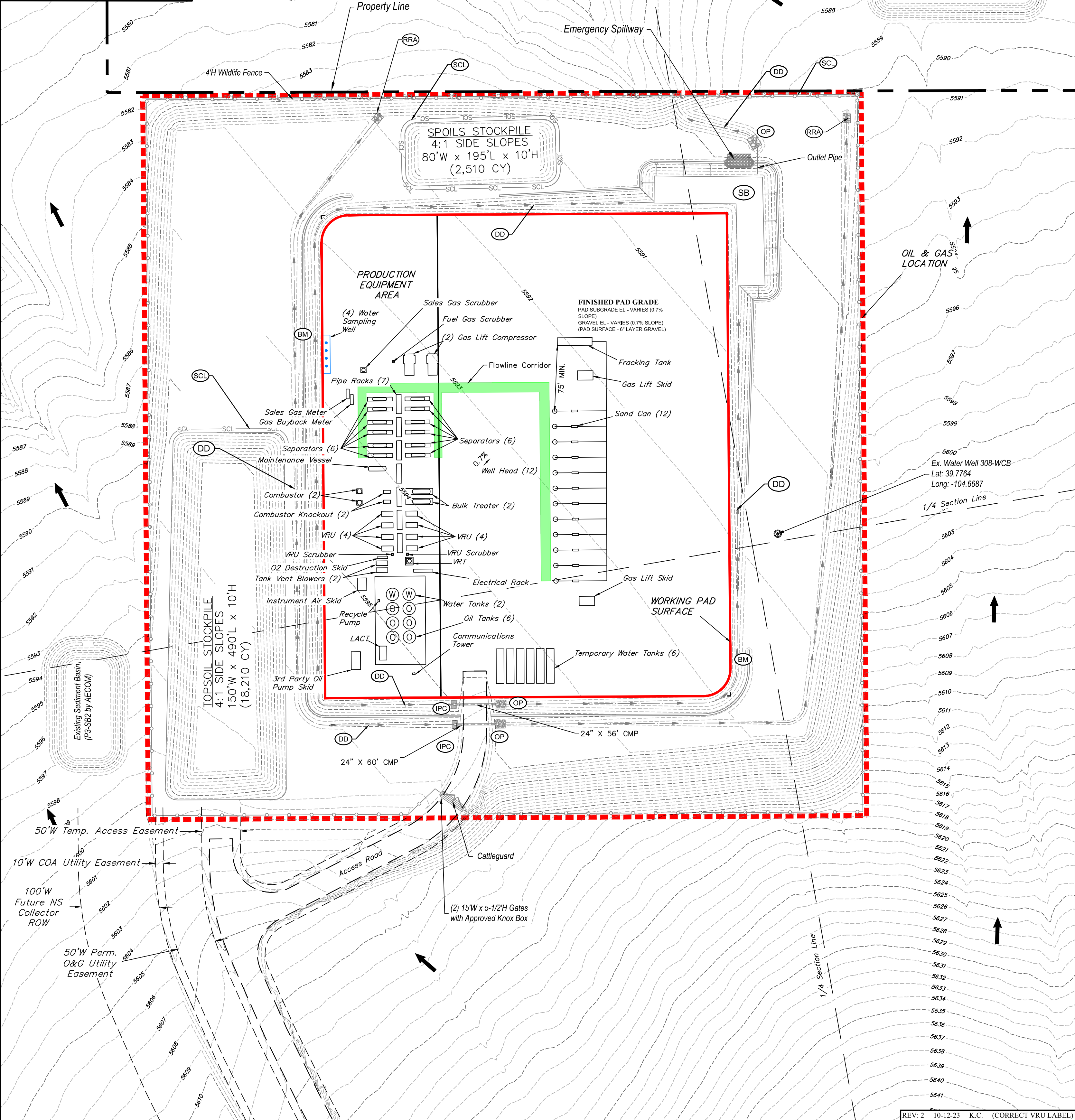
SURVEYED BY	JAYSEN CHILDERS	07-03-23	SCALE
DRAWN BY	K.C.	09-19-23	1" = 80'

**PRELIMINARY WELL COMPLETION & STIMULATION LAYOUT**



**LEGEND**

- DD DIVERSION DITCH
- SB SEDIMENT BASIN
- BM BERM
- IPC RRB FOR CULVERT PROTECTION
- RRA RIP-RAP APRON
- OP OUTLET PROTECTION
- FLOW DIRECTION
- WILDLIFE FENCE
- R-O-W
- PROPERTY LINE
- EXISTING MAJOR CONTOUR
- EXISTING MINOR CONTOUR
- WORKING PAD SURFACE
- OIL & GAS LOCATION
- FLOWLINE CORRIDOR



**NOTES:**

- Rounded corners shown at 35' radius.
- Contours shown at 1' intervals.
- Cut/Fill slopes 4:1 (Typ.).
- Overall Working Pad Surface = 625' x 525'

**UETAH**  
ENGINEERING & LAND SURVEYING

**UELS, LLC**  
Corporate Office \* 85 South 200 East  
Vernal, UT 84078 \* (435) 789-1017



REV: 2 10-12-23 K.C. (CORRECT VRU LABEL)

**CRESTONE PEAK**  
**RESOURCES OPERATING LLC**

BLJOU 3-65 19-24 NORTH PAD  
SE 1/4 NW 1/4, SECTION 21, T3S, R65W, 6th P.M.  
ADAMS COUNTY, COLORADO

SURVEYED BY	JAYSEN CHILDERS	07-03-23	SCALE
DRAWN BY	K.C.	09-19-23	1" = 80'

**PRELIMINARY FLOWBACK EQUIPMENT LAYOUT**

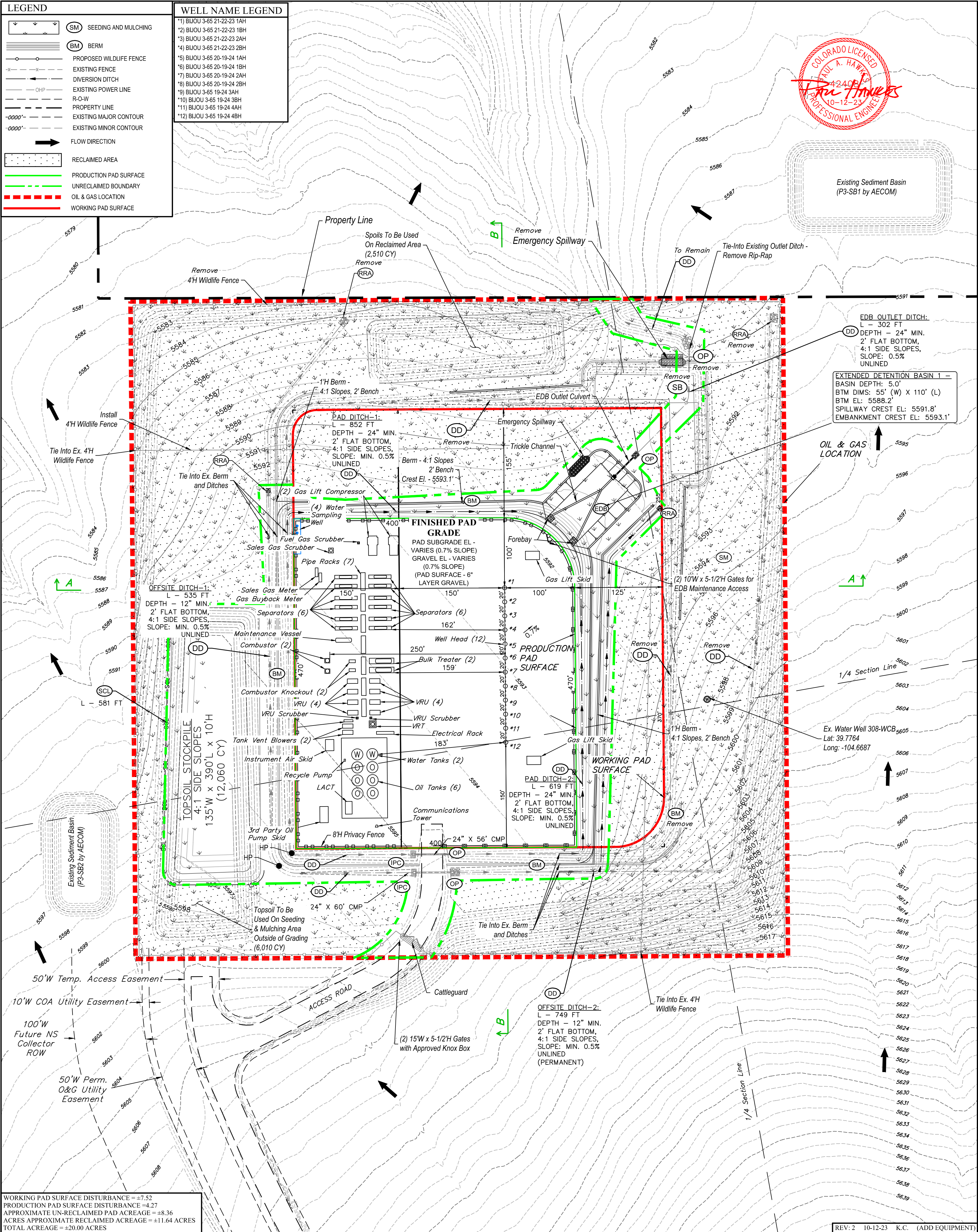


**LEGEND**

SEEDING AND MULCHING  
BERM  
PROPOSED WILDLIFE FENCE  
EXISTING FENCE  
DIVERSION DITCH  
EXISTING POWER LINE  
R-O-W  
PROPERTY LINE  
EXISTING MAJOR CONTOUR  
EXISTING MINOR CONTOUR  
FLOW DIRECTION  
RECLAIMED AREA  
PRODUCTION PAD SURFACE  
UNRECLAIMED BOUNDARY  
OIL & GAS LOCATION  
WORKING PAD SURFACE

**WELL NAME LEGEND**

\*1) BJOU 3-65 21-22-23 1AH  
\*2) BJOU 3-65 21-22-23 1BH  
\*3) BJOU 3-65 21-22-23 2AH  
\*4) BJOU 3-65 21-22-23 2BH  
\*5) BJOU 3-65 20-19-24 1AH  
\*6) BJOU 3-65 20-19-24 1BH  
\*7) BJOU 3-65 20-19-24 2AH  
\*8) BJOU 3-65 20-19-24 2BH  
\*9) BJOU 3-65 19-24 3AH  
\*10) BJOU 3-65 19-24 3BH  
\*11) BJOU 3-65 19-24 4AH  
\*12) BJOU 3-65 19-24 4BH

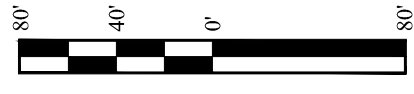


WORKING PAD SURFACE DISTURBANCE = ±7.52  
PRODUCTION PAD SURFACE DISTURBANCE = ±4.27  
APPROXIMATE UN-RECLAIMED PAD ACREAGE = ±8.36  
ACRES APPROXIMATE RECLAIMED ACREAGE = ±11.64 ACRES  
TOTAL ACREAGE = ±20.00 ACRES

- NOTES:**
- Contours shown at 1' intervals.
  - Cut/Fill slopes 4:1 (Typ.).
  - Overall Working Pad Surface = 625' x 525'
  - Overall Production Pad Surface = 470' x 400'



**UELS, LLC**  
Corporate Office \* 85 South 200 East  
Vernal, UT 84078 \* (435) 789-1017



REV: 2 10-12-23 K.C. (ADD EQUIPMENT)

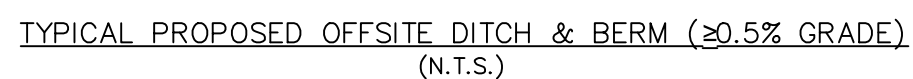
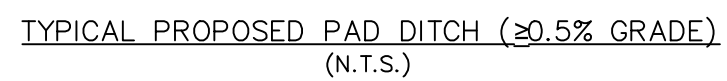
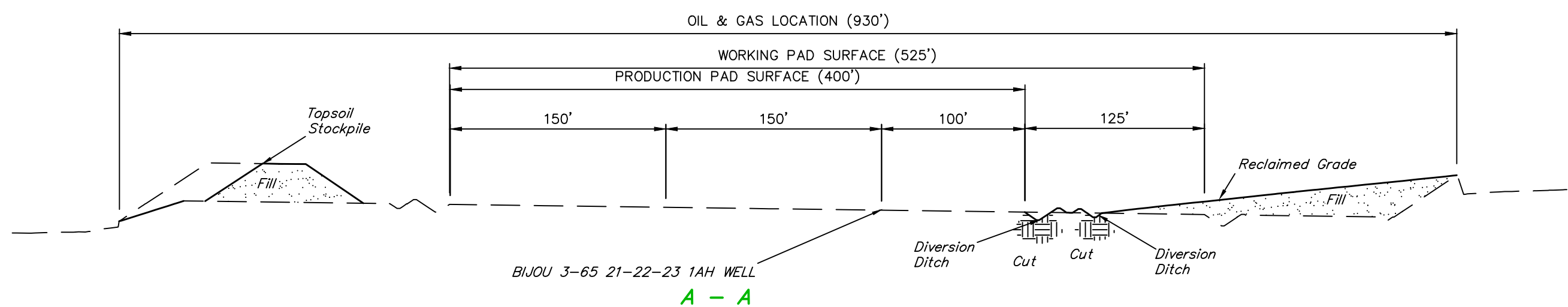
**CRESTONE PEAK  
RESOURCES OPERATING LLC**

BJOU 3-65 19-24 NORTH PAD  
SE 1/4 NW 1/4, SECTION 21, T3S, R65W, 6th P.M.  
ADAMS COUNTY, COLORADO

SURVEYED BY	JAYSEN CHILDERS	07-03-23	SCALE
DRAWN BY	K.C.	09-19-23	1" = 80'

**INTERIM RECLAMATION LAYOUT**





REV: 1 09-28-23 P.M. (CORRECT QTR/QTR IN TITLE BLOCK)

**BIJOU 3-65 19-24 NORTH PAD  
SE 1/4 NW 1/4, SECTION 21, T3S, R65W, 6th P.M.  
ADAMS COUNTY, COLORADO**

## INTERIM RECLAMATION - CROSS SECTIONS



Legend:

- SM SEEDING AND MULCHING
- BM BERM
- PROPOSED WILDLIFE FENCE
- EXISTING FENCE
- DIVERSION DITCH
- EXISTING POWER LINE
- R-O-W
- PROPERTY LINE
- EXISTING MAJOR CONTOUR
- EXISTING MINOR CONTOUR
- FLOW DIRECTION
- RECLAIMED AREA
- PRODUCTION PAD SURFACE
- UNRECLAIMED BOUNDARY
- OIL & GAS LOCATION
- WORKING PAD SURFACE

- \*1) BIJOU 3-65 21-22-23 1AH
- \*2) BIJOU 3-65 21-22-23 1BH
- \*3) BIJOU 3-65 21-22-23 2AH
- \*4) BIJOU 3-65 21-22-23 2BH
- \*5) BIJOU 3-65 20-19-24 1AH
- \*6) BIJOU 3-65 20-19-24 1BH
- \*7) BIJOU 3-65 20-19-24 2AH
- \*8) BIJOU 3-65 20-19-24 2BH
- \*9) BIJOU 3-65 19-24 3AH
- \*10) BIJOU 3-65 19-24 3BH
- \*11) BIJOU 3-65 19-24 4AH
- \*12) BIJOU 3-65 19-24 4BH

WORKING PAD SURFACE DISTURBANCE = ±7.52  
 PRODUCTION PAD SURFACE DISTURBANCE = 4.27  
 APPROXIMATE UN-RECLAIMED PAD ACREAGE = ±8.36  
 ACRES APPROXIMATE RECLAIMED ACREAGE = ±11.64 ACRES  
 TOTAL ACREAGE = ±20.00 ACRES

**NOTES:**

- Overall Working Pad Surface = 625' x 525'
- Overall Production Pad Surface = 470' x 400'



**UINTAH**  
ENGINEERING & LAND SURVEYING

**UELS, LLC**  
Corporate Office \* 85 South 200 East  
Vernal, UT 84078 \* (435) 789-1017

REV: 2 10-12-23 K.C. (ADD PAD SIZE &amp; DIMS

**CRESTONE PEAK  
RESOURCES OPERATING LLC**

**BIJOU 3-65 19-24 NORTH PAD  
SE 1/4 NW 1/4, SECTION 21, T3S, R65W, 6th P.M.  
ADAMS COUNTY, COLORADO**

<b>SURVEYED BY</b>	JAYSEN CHILDERS	07-03-23	<b>SCALE</b>
<b>DRAWN BY</b>	K.C.	09-19-23	1" = 80'

## FACILITY LAYOUT

