



PHOTO: VIEW OF LOCATION STAKES

CAMERA ANGLE: NORTHERLY



PHOTO: VIEW OF LOCATION STAKES

CAMERA ANGLE: EASTERLY

REV: 1 09-28-23 P.M. (CORRECT QTR/QTR IN TITLE BLOCK)

**CRESTONE PEAK
RESOURCES OPERATING LLC**

**BIJOU 3-65 19-24 NORTH PAD
SE 1/4 NW 1/4, SECTION 21, T3S, R65W, 6th P.M.
ADAMS COUNTY, COLORADO**

TAKEN BY	JAYSEN CHILDERS	07-03-23	
DRAWN BY	K.C.	07-26-23	
LOCATION PHOTOS			PHOTO 1



UELS, LLC
Corporate Office * 85 South 200 East
Vernal, UT 84078 * (435) 789-1017



PHOTO: VIEW OF LOCATION STAKES

CAMERA ANGLE: SOUTHERLY

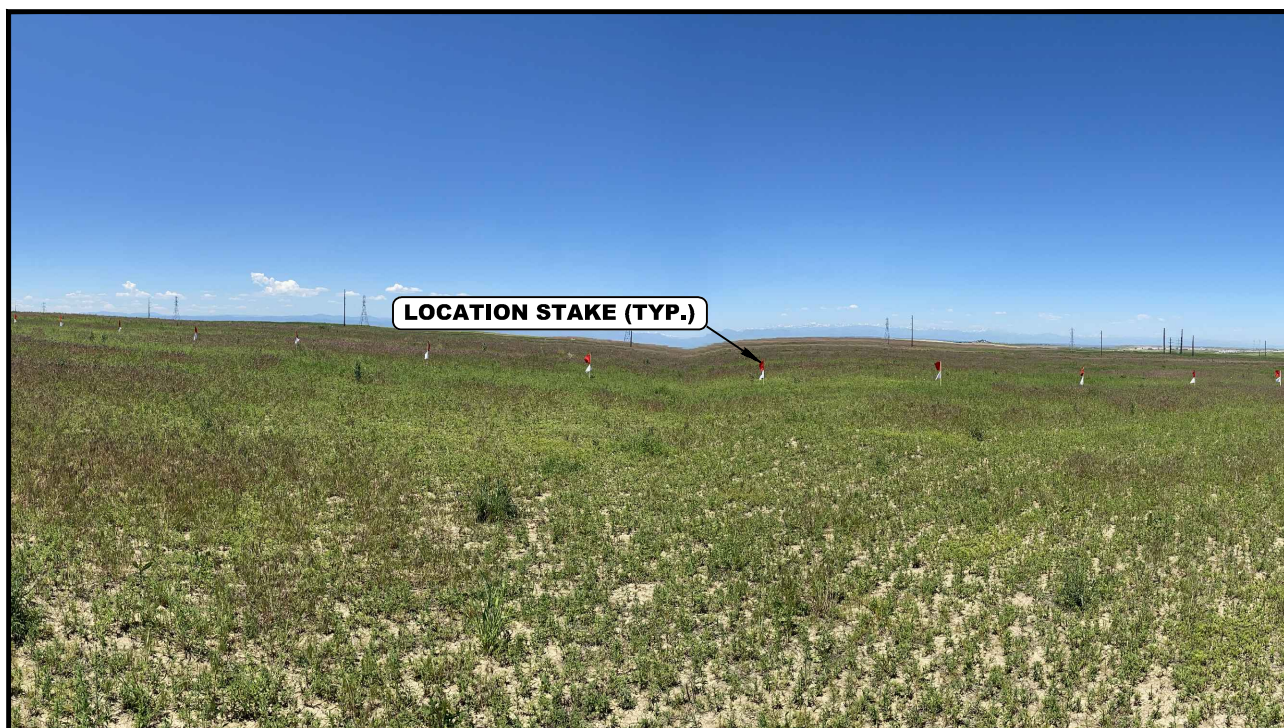


PHOTO: VIEW OF LOCATION STAKES

CAMERA ANGLE: WESTERLY

REV: 1 09-28-23 P.M. (CORRECT QTR/QTR IN TITLE BLOCK)

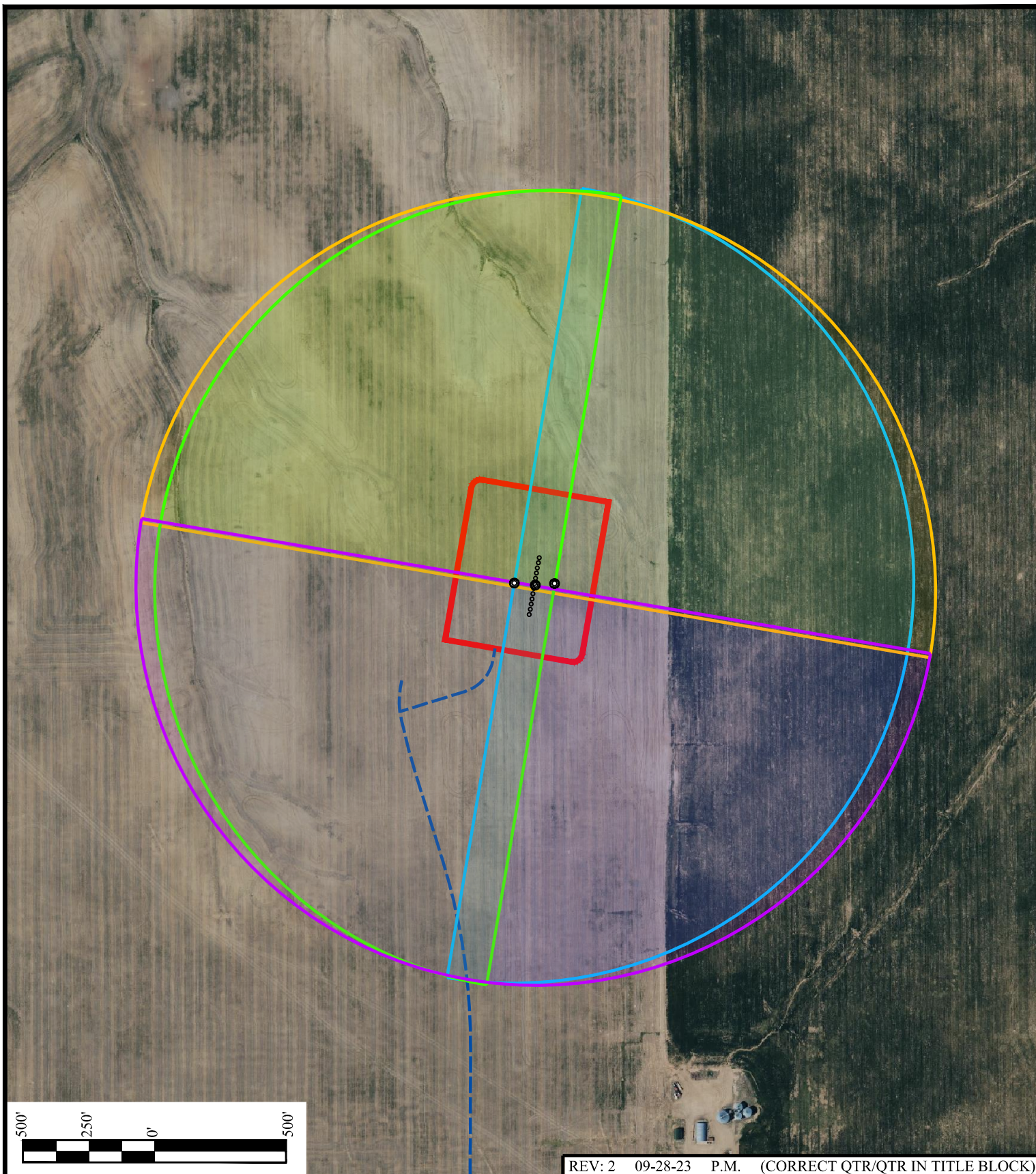
**CRESTONE PEAK
RESOURCES OPERATING LLC**

**BIJOU 3-65 19-24 NORTH PAD
SE 1/4 NW 1/4, SECTION 21, T3S, R65W, 6th P.M.
ADAMS COUNTY, COLORADO**



UELS, LLC
Corporate Office * 85 South 200 East
Vernal, UT 84078 * (435) 789-1017

TAKEN BY	JAYSEN CHILDERS	07-03-23	
DRAWN BY	K.C.	07-26-23	
LOCATION PHOTOS		PHOTO 2	



REV: 2 09-28-23 P.M. (CORRECT QTR/QTR IN TITLE BLOCK)

LEGEND:

- WORKING PAD SURFACE
- - - PROPOSED ACCESS ROAD
- NORTH FIELD OF VIEW
- EAST FIELD OF VIEW
- SOUTH FIELD OF VIEW
- WEST FIELD OF VIEW
- STANDING POINT
- LOCATION STAKE



UELS, LLC
Corporate Office * 85 South 200 East
Vernal, UT 84078 * (435) 789-1017



**CRESTONE PEAK
RESOURCES OPERATING LLC**

BIJOU 3-65 19-24 NORTH PAD
SE 1/4 NW 1/4, SECTION 21, T3S, R65W, 6th P.M.
ADAMS COUNTY, COLORADO

SURVEYED BY	JAYSEN CHILDERS	07-03-23	SCALE
DRAWN BY	K.C.	07-26-23	1" = 500'
LOCATION PHOTOS			AERIAL