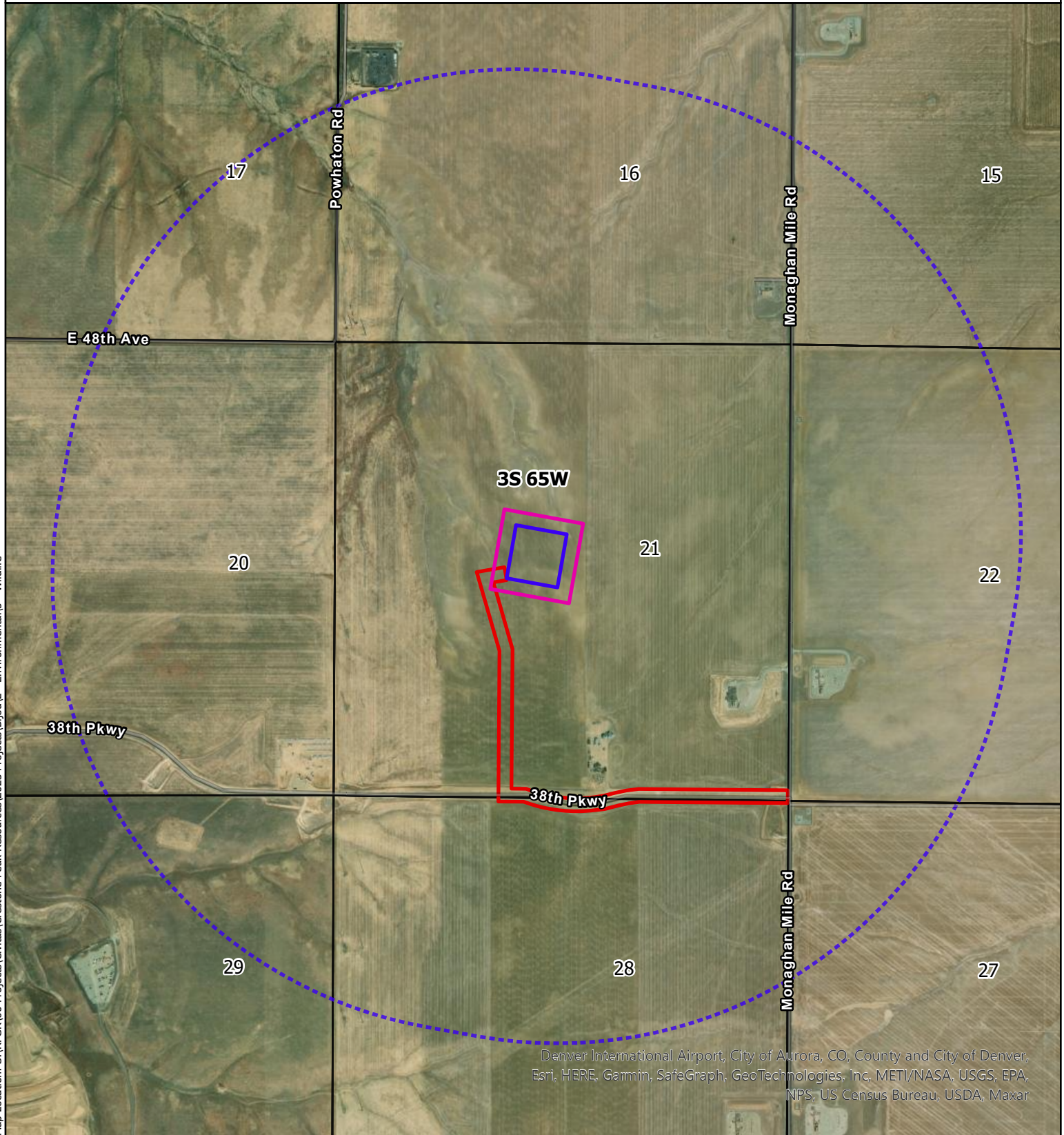


CRESTONE PEAK RESOURCES OPERATING, LLC
BIJOU 3-65 19-24 NORTH PAD
SEC 21, T3S, R65W, 6th P.M.
ADAMS COUNTY, COLORADO







Map Location: S:\RPGR\00 Projects\Civitas\Crestone Peak Resources\Bijou\2 - Environmental\5 - Wildlife



Denver International Airport, City of Aurora, CO, County and City of Denver,
Esri, HERE, Garmin, SafeGraph, GeoTechnologies, Inc, METI/NASA, USGS, EPA,
NPS, US Census Bureau, USDA, Maxar

WILDLIFE HABITAT DRAWING

-  Proposed Access Road
-  Proposed Oil & Gas Location (Disturbance Area)
-  Proposed Working Pad Surface (WPS)
-  1-Mile Buffer from edge of WPS

All pipeline and utility corridors associated with the O&G Location will be permitted and operated by third parties.

Projection: WGS 1984
Date: 07/25/2023
Drafted by: BRH



0 1,000 2,000
Feet

1 inch equals 2,000 feet