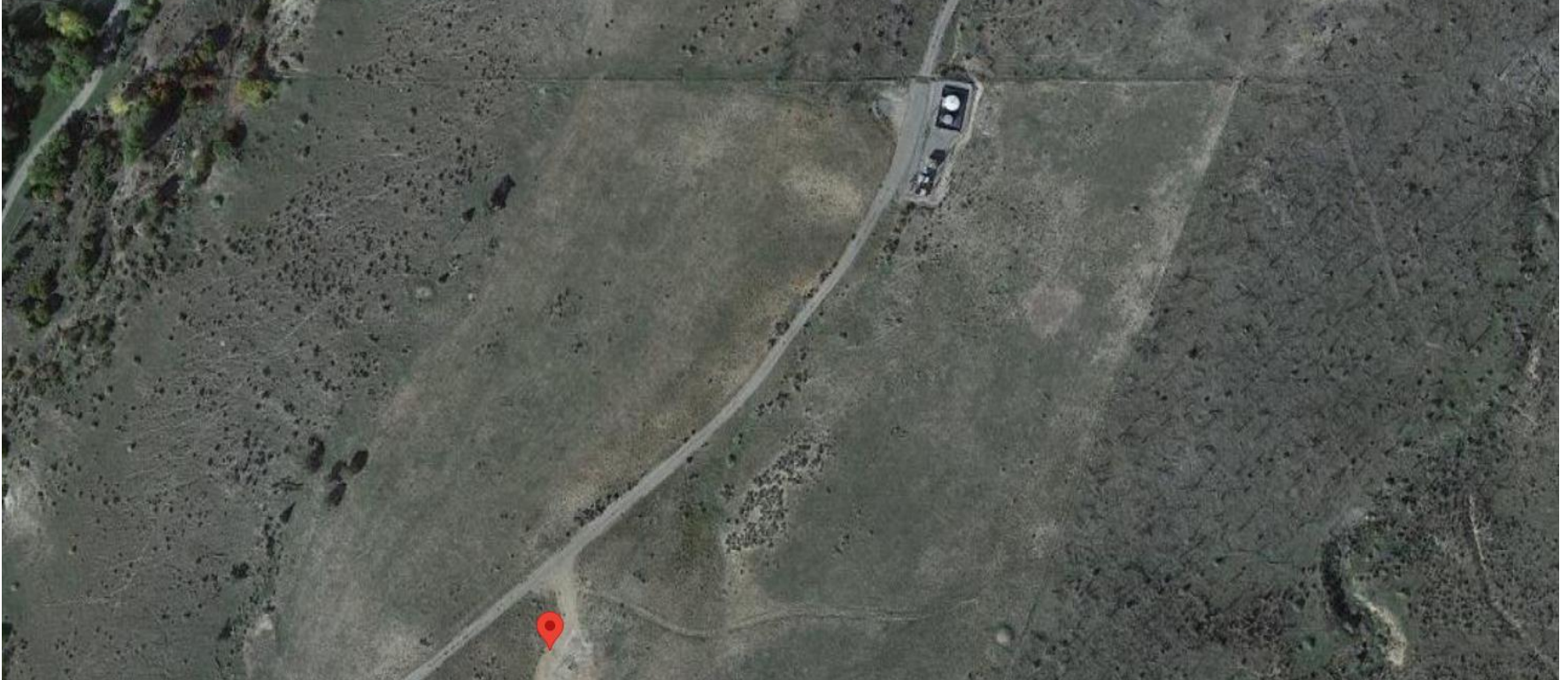


Storm Water Management and Erosion control
Location Name: TEP Rocky Mountain LLC MACKLEY 127-3 Pad
Location # 324083



**Location Overview: Location is within High
Priority/Density/NSO/Black Bear Habitat areas. Location is
approximately 181 yards from Spruce Creek.**

Section/Township/Range: 3 7S94W

Storm water Management and Erosion control
Location Name: TEP Rocky Mountain LLC MACKLEY 127-3 Pad
Location # 324083



North West corner of location.



North East corner of location.



South West corner of location.



South East corner of location.