




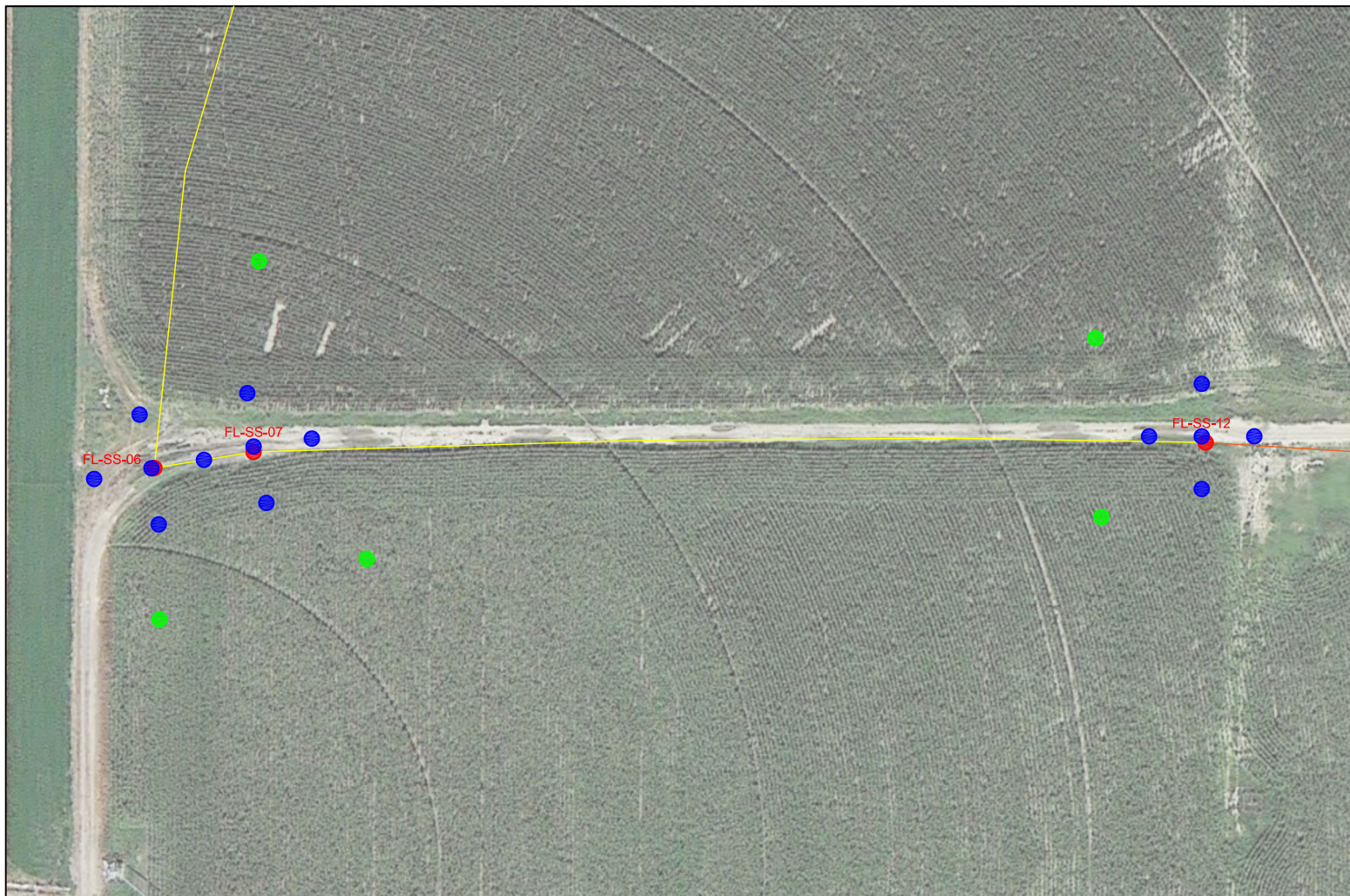


LEGEND

-  APPROXIMATE FLOWLINE LOCATION (REMOVED)
-  APPROXIMATE FLOWLINE LOCATION (ABANDONED)
-  PREVIOUS SOIL SAMPLE LOCATIONS ABOVE ECMC TABLE 915-1 REGULATORY LIMITS
-  PROPOSED SOIL BORING LOCATIONS (14)*
*TO BE COMPLETED AS MONITORING WELLS IF GROUNDWATER IS ENCOUNTERED
-  PROPOSED BACKGROUND SAMPLE LOCATIONS (5)



PROPOSED ASSESSMENT MAP
FOOS C #27-18
CLOSURE ASSESSMENT
40.287208 / -104.536534
NW¼ NE¼ SEC.27 T4N R64W 6PM
WELD COUNTY, COLORADO
API # 05-123-29390
REMEDATION # 28232

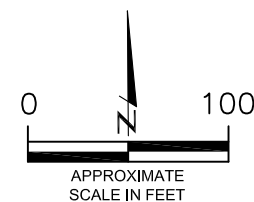


FIGURE NO.
1

DRAWN BY:
GEC



EAGLE
ENVIRONMENTAL
CONSULTING, LLC
8000 W 44th Ave, Wheat Ridge, CO 80033
Ph: 303-433-0479 • F: 303-325-5449