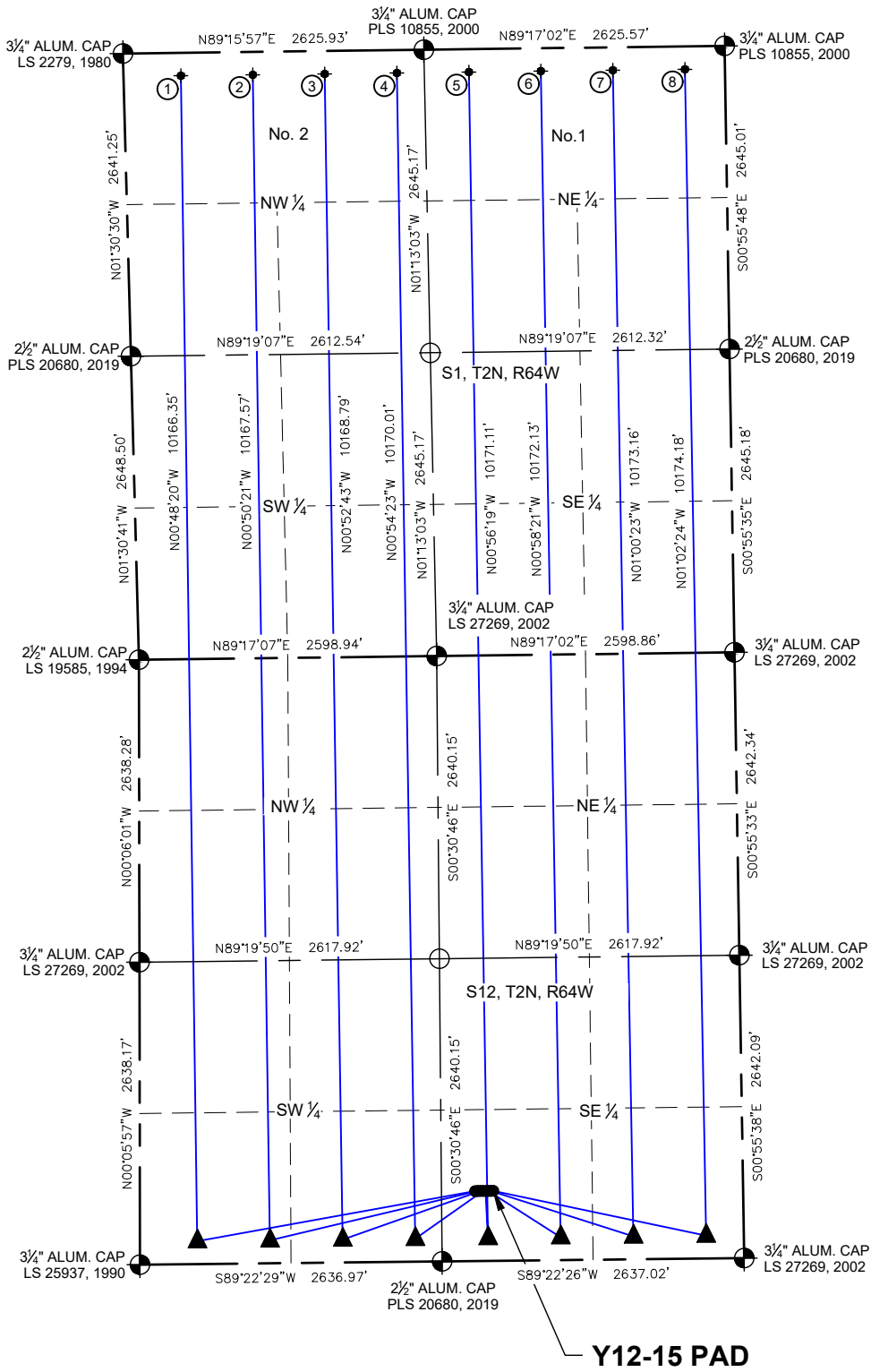
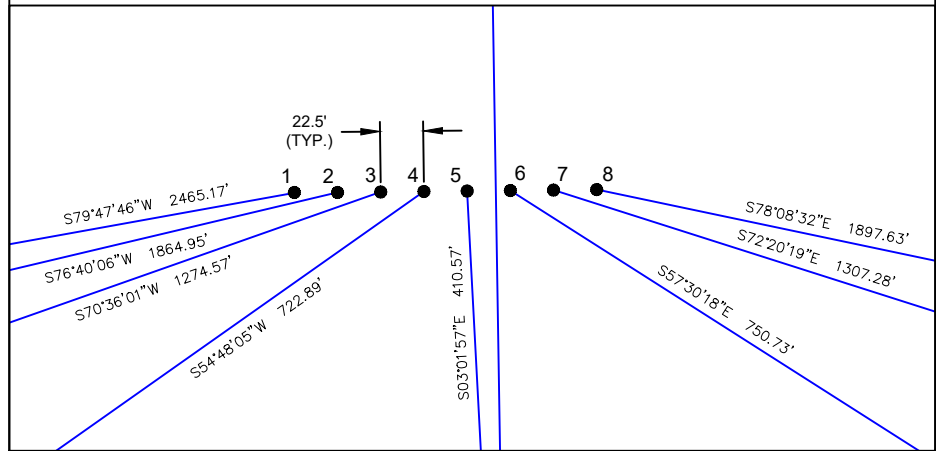


Y12-15 PAD MULTI-WELL LOCATION PLAT T2N R64W SECTION 12



Y12-15 PAD

PROPOSED WELLBORE DIRECTION DATA Y12-15 PAD SLOTS 1-8



LEGEND

- = FOUND MONUMENT
- = CALCULATED POSITION
- = PROPOSED WELL
- = BOTTOM HOLE
- = TOP OF PRODUCTION ZONE

NOTES:

- 1) ALL BEARINGS ARE GRID BEARINGS OF THE COLORADO STATE PLANE COORDINATE SYSTEM, NORTH ZONE, NORTH AMERICAN DATUM 1983/2011. THE LINEAL DIMENSIONS AS SHOWN HEREIN ARE GRID DISTANCES BASED UPON THE "U.S. SURVEY FOOT." TO GET GROUND DISTANCES MULTIPLY SHOWN DISTANCE BY 1.00027289.
- 2) DISTANCES ARE MEASURED AT 90° FROM SECTION LINE OF THE SIXTH PRINCIPAL MERIDIAN, COUNTY OF WELD, STATE OF COLORADO.
- 3) GROUND ELEVATIONS ARE BASED ON AN OBSERVED GPS ELEVATION (NAVD 1988 DATUM).
- 4) SURFACE USE: "RANGELAND"
- 5) INSTRUMENT OPERATOR: LOGAN THIELBERT
- 6) THIS MAP DOES NOT REPRESENT A BOUNDARY SURVEY.

DISCLAIMER:
THIS PLOT DOES NOT REPRESENT A MONUMENTED LAND SURVEY AND SHOULD NOT BE RELIED UPON TO DETERMINE BOUNDARY LINES, PROPERTY OWNERSHIP OR OTHER PROPERTY INTERESTS. PARCEL LINES, IF DEPICTED HAVE NOT BEEN FIELD VERIFIED AND MAY BE BASED UPON PUBLICLY AVAILABLE DATA THAT ALSO HAS NOT BEEN INDEPENDENTLY VERIFIED.

SURFACE HOLE LOCATION									TOP OF PRODUCTION ZONE		BOTTOM HOLE LOCATION	
SLOT	WELL NAME	LATITUDE	LONGITUDE	FOOTAGE		QTR-QTR	ELEV.	PDOP	FOOTAGE		FOOTAGE	
1	GUTTERSEN Y12-782	40.147318°N	104.498797°W	610' FSL	2338' FEL	SWSE	4863'	1.2	200' FSL	500' FWL	200' FNL	500' FWL
2	GUTTERSEN Y12-773	40.147318°N	104.498717°W	610' FSL	2316' FEL	SWSE	2863'	1.2	200' FSL	1134' FWL	200' FNL	1128' FWL
3	GUTTERSEN Y12-763	40.147318°N	104.498636°W	610' FSL	2293' FEL	SWSE	4864'	1.2	200' FSL	1769' FWL	200' FNL	1756' FWL
4	GUTTERSEN Y12-754	40.147317°N	104.498556°W	610' FSL	2271' FEL	SWSE	4864'	1.2	200' FSL	2403' FWL	200' FNL	2385' FWL
5	GUTTERSEN Y12-744	40.147317°N	104.498475°W	610' FSL	2248' FEL	SWSE	4864'	1.2	200' FSL	2233' FEL	200' FNL	2235' FEL
6	GUTTERSEN Y12-734	40.147317°N	104.498395°W	610' FSL	2226' FEL	SWSE	4864'	1.2	200' FSL	1599' FEL	200' FNL	1607' FEL
7	GUTTERSEN Y12-725	40.147317°N	104.498314°W	610' FSL	2203' FEL	SWSE	4864'	1.2	200' FSL	964' FEL	200' FNL	978' FEL
8	GUTTERSEN Y12-715	40.147317°N	104.498234°W	610' FSL	2181' FEL	SWSE	4864'	1.2	200' FSL	330' FEL	200' FNL	350' FEL



FIELD DATE:
10-10-23

DRAWN BY:
GLP

DRAWING DATE:
2-08-24

CHECKED BY:
TRP

SURFACE LOCATION:
SEC. 12, T2N, R64W, 6TH P.M.
WELD COUNTY, COLORADO

PUBLICLY AVAILABLE DATA SOURCES HAVE NOT BEEN INDEPENDENTLY VERIFIED BY ASCENT.

