

NOBLE ENERGY, INC



Location: COLORADO Slot: SLOT#07 Guttersen Y12-725 (610'FSL & 2203'FEL,SEC.12)

Field: WELD COUNTY (NOBLE NAD 83 GRID) Well: Guttersen Y12-725

Facility: SEC.12-T02N-R64W Wellbore: Guttersen Y12-725 PWB

Plot reference wellpath is Guttersen Y12-725 (REV-B.1) PWP

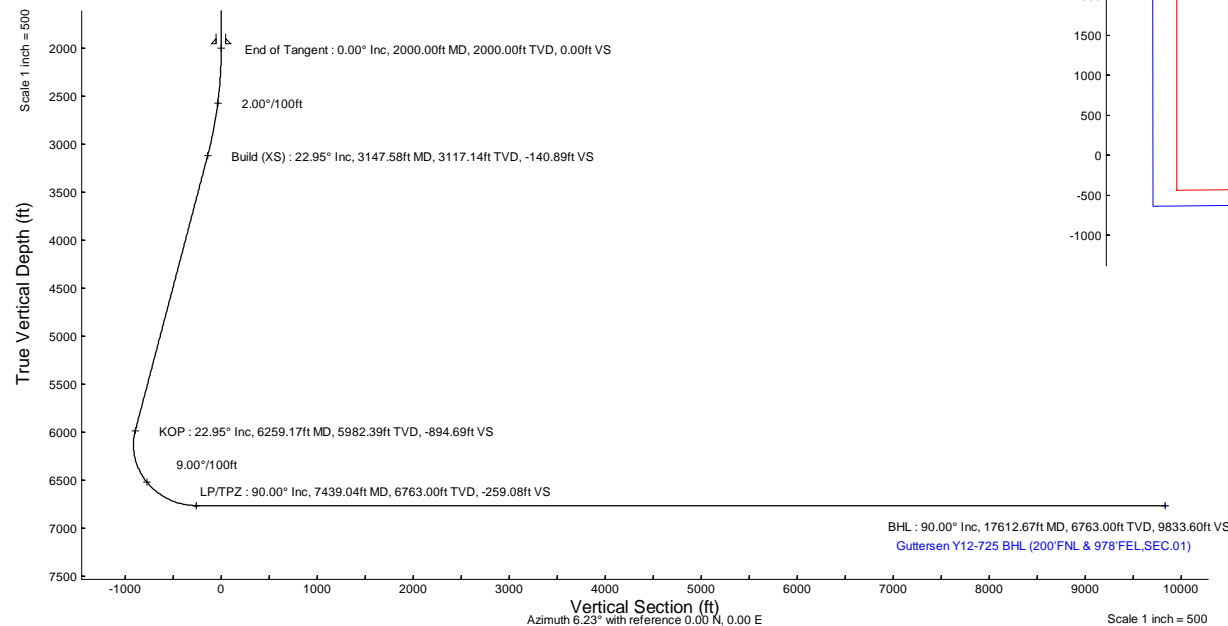
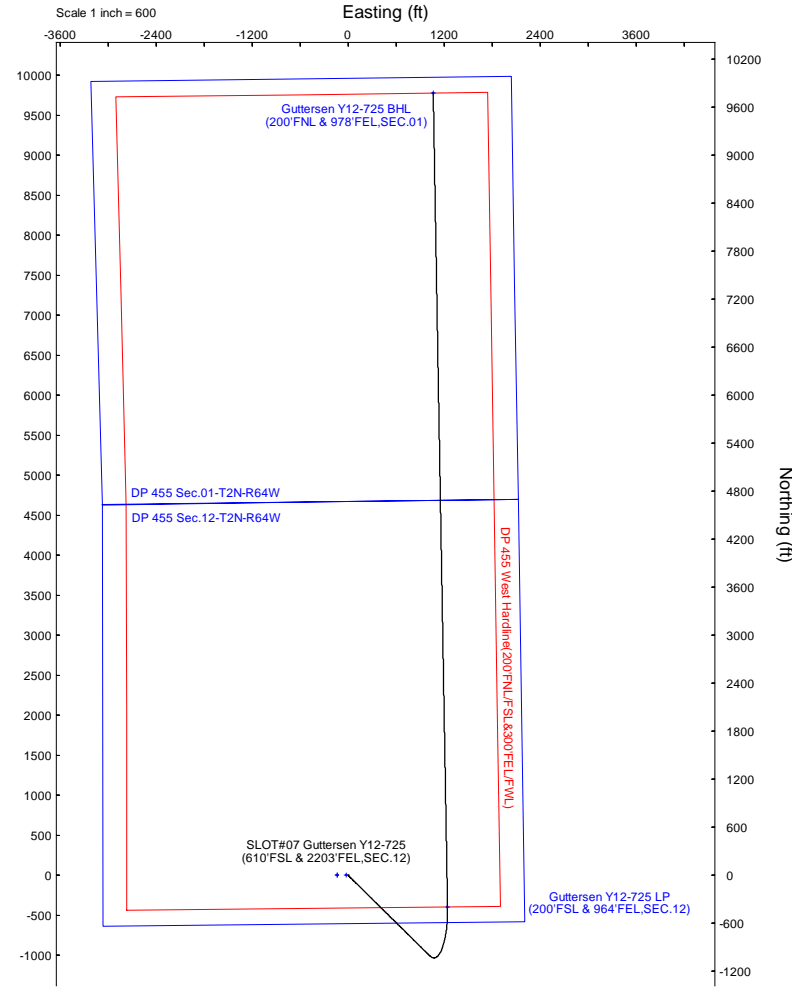
Grid System: NAD83 / Lambert Colorado SP, Northern Zone (501), US feet
 True vertical depths are referenced to RIG (4866'GL+30'KB@4896'RKB) (RKB)
 North Reference: Grid north
 Reference wellpath measured depths are referenced to RIG (4866'GL+30'KB@4896'RKB) (RKB)
 Scale: True distance
 RIG (4866'GL+30'KB@4896'RKB) (RKB) to Mean Sea Level: 4894 feet
 Coordinates are in feet referenced to Slot
 Mean Sea Level to Ground level (At Slot: SLOT#07 Guttersen Y12-725 (610'FSL & 2203'FEL,SEC.12)): 0 feet
 Depths are in feet
 Offset wellpath MDs are referenced to each path's default MD datum
 Created by: gumarier on 2023-12-05; Database: WA_Denver

Location Information						
Facility Name		Grid East (US ft)	Grid North (US ft)	Latitude	Longitude	
SEC.12-T02N-R64W		3279878.757	1298091.404	40°08'50.3448"N	104°29'55.6692"W	
Slot	Local N (ft)	Local E (ft)	Grid East (US ft)	Grid North (US ft)	Latitude	Longitude
SLOT#07 Guttersen Y12-725 (610'FSL & 2203'FEL,SEC.12)	1.16	135.02	3280013.775	1298092.565	40°08'50.3412"N	104°29'53.9304"W
RIG (4866'GL+30'KB@4896'RKB) (RKB) to Ground level (At Slot: SLOT#07 Guttersen Y12-725 (610'FSL & 2203'FEL,SEC.12))				4894ft		
Mean Sea Level to Ground level (At Slot: SLOT#07 Guttersen Y12-725 (610'FSL & 2203'FEL,SEC.12))				0ft		
RIG (4866'GL+30'KB@4896'RKB) (RKB) to Mean Sea Level				4894ft		

Well Profile Data								
Design Comment	MD (ft)	Inc (°)	Az (°)	TVD (ft)	Local N (ft)	Local E (ft)	DLS (°/100ft)	VS (ft)
Tie On	30.00	0.000	134.633	30.00	0.00	0.00	0.00	0.00
End of Tangent	2000.00	0.000	134.633	2000.00	0.00	0.00	0.00	0.00
Build (XS)	3147.58	22.952	134.633	3117.14	-159.34	161.39	2.00	-140.89
KOP	6259.17	22.952	134.633	5982.39	-1011.82	1024.85	0.00	-894.69
LP/TPZ	7439.04	90.000	358.994	6763.00	-396.47	1245.21	9.00	-259.08
BHL	17612.67	90.000	358.994	6763.00	9775.59	1066.57	0.00	9833.60

Targets								
Name	MD (ft)	TVD (ft)	Local N (ft)	Local E (ft)	Grid East (US ft)	Grid North (US ft)	Latitude	Longitude
DP 455 Sec.01-T2N-R64W	N/A	-2.00	-1.16	-135.02	3279878.76	1298091.40	40°08'50.3448"N	104°29'55.6692"W
DP 455 Sec.12-T2N-R64W	N/A	-2.00	-1.16	-135.02	3279878.76	1298091.40	40°08'50.3448"N	104°29'55.6692"W
Guttersen Y12-725 BHL (200'FNL & 978'FEL,SEC.01)	17612.67	6763.00	9775.59	1066.57	3281080.30	1307867.73	40°10'26.8186"N	104°29'38.7687"W
Guttersen Y12-725 LP (200'FSL & 964'FEL,SEC.12)	7439.04	6763.00	-396.47	1245.21	3281258.93	1297696.11	40°08'46.2842"N	104°29'37.9644"W
DP 455 West Handline(200'FNL&300'FEL\FWL)	N/A	6850.00	-0.26	-22.64	3279991.13	1298092.31	40°08'50.3412"N	104°29'54.2220"W

Survey Program					
Start MD (ft)	End MD (ft)	Tool	Model	Log Name/Comment	Wellbore
30.00	1950.00	OWSG MWD rev2	OWSG MWD rev2 (MS+IFR1)		Guttersen Y12-725 PWB
1950.00	17612.67	OWSG MWD rev2	OWSG MWD rev2 (MS+IFR1)		Guttersen Y12-725 PWB



BGGM (1900.0 to 2024.0) Dip: 66.38° Field: 51693.3 nT
 Magnetic North is 7.63 degrees East of True North (at 3/31/2023)
 Grid North is 0.65 degrees East of True North
 To correct azimuth from True to Grid subtract 0.65 degrees
 To correct azimuth from Magnetic to Grid add 0.98 degrees



Planned Wellpath Report

Guttersen Y12-725 (REV-B.1) PWP

Page 1 of 8



REFERENCE WELLPATH IDENTIFICATION

Operator	NOBLE ENERGY, INC	Well	Guttersen Y12-725
Field	WELD COUNTY (NOBLE NAD 83 GRID)	API/Legal	
Facility	SEC.12-T02N-R64W	Wellbore	Guttersen Y12-725 PWB
Slot	SLOT#07 Guttersen Y12-725 (610'FSL & 2203'FEL,SEC.12)		

REPORT SETUP INFORMATION

Projection System	NAD83 / Lambert Colorado SP, Northern Zone (501), US feet	Software System	WellArchitect® 6.0
North Reference	Grid	User	Guenaler
Scale	0.999958	Report Generated	2/12/2024 at 12:34:29 PM
Convergence at slot	0.65° East	Database	WA_Denver

WELLPATH LOCATION

	Local coordinates		Grid coordinates		Geographic coordinates	
	North[ft]	East[ft]	Easting[US ft]	Northing[US ft]	Latitude	Longitude
Slot Location	1.16	135.02	3280013.78	1298092.57	40.1473170°	-104.4983140°
Facility Reference Pt			3279878.76	1298091.40	40.1473180°	-104.4987970°
Field Reference Pt			3000000.00	4454105.15	48.7761986°	-105.5000000°

WELLPATH DATUM

Calculation method	Minimum curvature	RIG (4866'GL+30'KB@4896'RKB) (RKB) to Facility Vertical Datum	4894.00ft
Horizontal Reference Pt	Slot	RIG (4866'GL+30'KB@4896'RKB) (RKB) to Mean Sea Level	4894.00ft
Vertical Reference Pt	RIG (4866'GL+30'KB@4896'RKB) (RKB)	RIG (4866'GL+30'KB@4896'RKB) (RKB) to Ground Level at Slot (SLOT#07 Guttersen Y12-725 (610'FSL & 2203'FEL,SEC.12))	4894.00ft
MD Reference Pt	RIG (4866'GL+30'KB@4896'RKB) (RKB)	Section Origin	N 0.00, E 0.00 ft
Field Vertical Reference	Mean Sea Level	Section Azimuth	6.23°



Planned Wellpath Report

Guttersen Y12-725 (REV-B.1) PWP

Page 2 of 8



REFERENCE WELLPATH IDENTIFICATION

Operator	NOBLE ENERGY, INC	Well	Guttersen Y12-725
Field	WELD COUNTY (NOBLE NAD 83 GRID)	API/Legal	
Facility	SEC.12-T02N-R64W	Wellbore	Guttersen Y12-725 PWB
Slot	SLOT#07 Guttersen Y12-725 (610'FSL & 2203'FEL,SEC.12)		

WELLPATH DATA (192 stations) † = interpolated, ‡ = extrapolated station

MD [ft]	Inclination [°]	Azimuth [°]	TVD [ft]	Vert Sect [ft]	North [ft]	East [ft]	Latitude	Longitude	DLS [°/100ft]	Comments
0.00†	0.000	134.633	0.00	0.00	0.00	0.00	40.1473170	-104.4983140	0.00	
30.00	0.000	134.633	30.00	0.00	0.00	0.00	40.1473170	-104.4983140	0.00	Tie On
130.00†	0.000	134.633	130.00	0.00	0.00	0.00	40.1473170	-104.4983140	0.00	
230.00†	0.000	134.633	230.00	0.00	0.00	0.00	40.1473170	-104.4983140	0.00	
330.00†	0.000	134.633	330.00	0.00	0.00	0.00	40.1473170	-104.4983140	0.00	
430.00†	0.000	134.633	430.00	0.00	0.00	0.00	40.1473170	-104.4983140	0.00	
530.00†	0.000	134.633	530.00	0.00	0.00	0.00	40.1473170	-104.4983140	0.00	
630.00†	0.000	134.633	630.00	0.00	0.00	0.00	40.1473170	-104.4983140	0.00	
730.00†	0.000	134.633	730.00	0.00	0.00	0.00	40.1473170	-104.4983140	0.00	
830.00†	0.000	134.633	830.00	0.00	0.00	0.00	40.1473170	-104.4983140	0.00	
918.33†	0.000	134.633	918.33	0.00	0.00	0.00	40.1473170	-104.4983140	0.00	Upper Pierre Aquifer Top
930.00†	0.000	134.633	930.00	0.00	0.00	0.00	40.1473170	-104.4983140	0.00	
1030.00†	0.000	134.633	1030.00	0.00	0.00	0.00	40.1473170	-104.4983140	0.00	
1130.00†	0.000	134.633	1130.00	0.00	0.00	0.00	40.1473170	-104.4983140	0.00	
1230.00†	0.000	134.633	1230.00	0.00	0.00	0.00	40.1473170	-104.4983140	0.00	
1330.00†	0.000	134.633	1330.00	0.00	0.00	0.00	40.1473170	-104.4983140	0.00	
1430.00†	0.000	134.633	1430.00	0.00	0.00	0.00	40.1473170	-104.4983140	0.00	
1530.00†	0.000	134.633	1530.00	0.00	0.00	0.00	40.1473170	-104.4983140	0.00	
1630.00†	0.000	134.633	1630.00	0.00	0.00	0.00	40.1473170	-104.4983140	0.00	
1638.82†	0.000	134.633	1638.82	0.00	0.00	0.00	40.1473170	-104.4983140	0.00	Upper Pierre Aquifer Base
1730.00†	0.000	134.633	1730.00	0.00	0.00	0.00	40.1473170	-104.4983140	0.00	
1830.00†	0.000	134.633	1830.00	0.00	0.00	0.00	40.1473170	-104.4983140	0.00	
1930.00†	0.000	134.633	1930.00	0.00	0.00	0.00	40.1473170	-104.4983140	0.00	
2000.00	0.000	134.633	2000.00	0.00	0.00	0.00	40.1473170	-104.4983140	0.00	End of Tangent
2030.00†	0.600	134.633	2030.00	-0.10	-0.11	0.11	40.1473167	-104.4983136	2.00	
2130.00†	2.600	134.633	2129.96	-1.83	-2.07	2.10	40.1473112	-104.4983066	2.00	
2230.00†	4.600	134.633	2229.75	-5.73	-6.48	6.57	40.1472990	-104.4982908	2.00	
2330.00†	6.600	134.633	2329.27	-11.79	-13.34	13.51	40.1472800	-104.4982662	2.00	
2430.00†	8.600	134.633	2428.39	-20.01	-22.63	22.92	40.1472542	-104.4982329	2.00	
2530.00†	10.600	134.633	2526.98	-30.37	-34.35	34.79	40.1472216	-104.4981910	2.00	
2630.00†	12.600	134.633	2624.93	-42.86	-48.47	49.10	40.1471824	-104.4981403	2.00	
2730.00†	14.600	134.633	2722.13	-57.47	-64.99	65.83	40.1471366	-104.4980812	2.00	
2830.00†	16.600	134.633	2818.44	-74.17	-83.88	84.96	40.1470841	-104.4980135	2.00	
2930.00†	18.600	134.633	2913.75	-92.96	-105.13	106.48	40.1470251	-104.4979374	2.00	
3030.00†	20.600	134.633	3007.95	-113.80	-128.69	130.35	40.1469597	-104.4978530	2.00	
3130.00†	22.600	134.633	3100.93	-136.66	-154.56	156.55	40.1468879	-104.4977603	2.00	
3147.58	22.952	134.633	3117.14	-140.89	-159.34	161.39	40.1468746	-104.4977432	2.00	Build (XS)
3230.00†	22.952	134.633	3193.03	-160.86	-181.92	184.26	40.1468119	-104.4976623	0.00	
3330.00†	22.952	134.633	3285.11	-185.08	-209.31	212.01	40.1467359	-104.4975641	0.00	
3430.00†	22.952	134.633	3377.20	-209.31	-236.71	239.76	40.1466598	-104.4974660	0.00	
3530.00†	22.952	134.633	3469.28	-233.54	-264.11	267.51	40.1465838	-104.4973678	0.00	
3630.00†	22.952	134.633	3561.36	-257.76	-291.51	295.26	40.1465077	-104.4972697	0.00	
3730.00†	22.952	134.633	3653.45	-281.99	-318.90	323.01	40.1464316	-104.4971716	0.00	
3830.00†	22.952	134.633	3745.53	-306.21	-346.30	350.76	40.1463556	-104.4970734	0.00	
3889.46†	22.952	134.633	3800.28	-320.62	-362.59	367.26	40.1463104	-104.4970151	0.00	Parkman

REFERENCE WELLPATH IDENTIFICATION			
Operator	NOBLE ENERGY, INC	Well	Guttersen Y12-725
Field	WELD COUNTY (NOBLE NAD 83 GRID)	API/Legal	
Facility	SEC.12-T02N-R64W	Wellbore	Guttersen Y12-725 PWB
Slot	SLOT#07 Guttersen Y12-725 (610'FSL & 2203'FEL, SEC.12)		

WELLPATH DATA (192 stations) † = interpolated, ‡ = extrapolated station										
MD [ft]	Inclination [°]	Azimuth [°]	TVD [ft]	Vert Sect [ft]	North [ft]	East [ft]	Latitude	Longitude	DLS [°/100ft]	Comments
3930.00†	22.952	134.633	3837.61	-330.44	-373.70	378.51	40.1462795	-104.4969753	0.00	
4030.00†	22.952	134.633	3929.70	-354.66	-401.09	406.26	40.1462035	-104.4968771	0.00	
4130.00†	22.952	134.633	4021.78	-378.89	-428.49	434.01	40.1461274	-104.4967790	0.00	
4230.00†	22.952	134.633	4113.86	-403.11	-455.89	461.76	40.1460513	-104.4966808	0.00	
4240.98†	22.952	134.633	4123.97	-405.77	-458.89	464.80	40.1460430	-104.4966701	0.00	Sussex
4330.00†	22.952	134.633	4205.95	-427.34	-483.28	489.51	40.1459753	-104.4965827	0.00	
4430.00†	22.952	134.633	4298.03	-451.56	-510.68	517.26	40.1458992	-104.4964845	0.00	
4530.00†	22.952	134.633	4390.11	-475.79	-538.08	545.01	40.1458231	-104.4963864	0.00	
4630.00†	22.952	134.633	4482.20	-500.02	-565.47	572.76	40.1457471	-104.4962882	0.00	
4730.00†	22.952	134.633	4574.28	-524.24	-592.87	600.51	40.1456710	-104.4961901	0.00	
4830.00†	22.952	134.633	4666.36	-548.47	-620.27	628.26	40.1455950	-104.4960920	0.00	
4930.00†	22.952	134.633	4758.45	-572.69	-647.67	656.01	40.1455189	-104.4959938	0.00	
5030.00†	22.952	134.633	4850.53	-596.92	-675.06	683.76	40.1454428	-104.4958957	0.00	
5130.00†	22.952	134.633	4942.61	-621.14	-702.46	711.51	40.1453668	-104.4957975	0.00	
5136.52†	22.952	134.633	4948.62	-622.72	-704.25	713.32	40.1453618	-104.4957911	0.00	Shannon
5230.00†	22.952	134.633	5034.70	-645.37	-729.86	739.26	40.1452907	-104.4956994	0.00	
5330.00†	22.952	134.633	5126.78	-669.59	-757.25	767.01	40.1452146	-104.4956012	0.00	
5430.00†	22.952	134.633	5218.86	-693.82	-784.65	794.76	40.1451386	-104.4955031	0.00	
5530.00†	22.952	134.633	5310.95	-718.05	-812.05	822.51	40.1450625	-104.4954050	0.00	
5630.00†	22.952	134.633	5403.03	-742.27	-839.44	850.26	40.1449865	-104.4953068	0.00	
5730.00†	22.952	134.633	5495.11	-766.50	-866.84	878.01	40.1449104	-104.4952087	0.00	
5830.00†	22.952	134.633	5587.20	-790.72	-894.24	905.76	40.1448343	-104.4951105	0.00	
5930.00†	22.952	134.633	5679.28	-814.95	-921.63	933.51	40.1447583	-104.4950124	0.00	
6030.00†	22.952	134.633	5771.37	-839.17	-949.03	961.26	40.1446822	-104.4949142	0.00	
6130.00†	22.952	134.633	5863.45	-863.40	-976.43	989.01	40.1446061	-104.4948161	0.00	
6230.00†	22.952	134.633	5955.53	-887.62	-1003.83	1016.76	40.1445301	-104.4947180	0.00	
6258.32†	22.952	134.633	5981.61	-894.48	-1011.58	1024.61	40.1445085	-104.4946902	0.00	Teepee Buttes
6259.17	22.952	134.633	5982.39	-894.69	-1011.82	1024.85	40.1445079	-104.4946893	0.00	KOP
6330.00†	19.122	120.347	6048.53	-908.02	-1027.40	1044.71	40.1444645	-104.4946189	9.00	
6430.00†	16.513	91.857	6143.91	-913.65	-1036.15	1073.11	40.1444396	-104.4945177	9.00	
6530.00†	18.362	62.121	6239.50	-903.71	-1029.23	1101.29	40.1444577	-104.4944166	9.00	
6630.00†	23.646	41.543	6332.95	-878.46	-1006.81	1128.57	40.1445184	-104.4943182	9.00	
6730.00†	30.634	28.992	6421.95	-838.52	-969.44	1154.27	40.1446202	-104.4942247	9.00	
6830.00†	38.404	20.927	6504.33	-784.88	-918.04	1177.76	40.1447605	-104.4941386	9.00	
6930.00†	46.562	15.276	6578.04	-718.84	-853.87	1198.47	40.1449360	-104.4940620	9.00	
6975.64†	50.362	13.192	6608.30	-685.02	-820.76	1206.85	40.1450266	-104.4940306	9.00	Sharon Springs
7030.00†	54.931	10.990	6641.28	-642.05	-778.52	1215.87	40.1451423	-104.4939967	9.00	
7038.30†	55.632	10.677	6646.00	-635.25	-771.82	1217.15	40.1451606	-104.4939918	9.00	Top A Chalk, Top A Marl
7108.83†	61.618	8.199	6682.71	-575.16	-712.44	1226.98	40.1453233	-104.4939542	9.00	Top B Chalk
7130.00†	63.423	7.512	6692.48	-556.39	-693.84	1229.54	40.1453743	-104.4939443	9.00	
7213.17†	70.542	4.998	6724.98	-479.90	-617.80	1237.83	40.1455828	-104.4939116	9.00	Top B Marl
7230.00†	71.988	4.519	6730.39	-463.96	-601.91	1239.16	40.1456263	-104.4939062	9.00	
7330.00†	80.594	1.805	6754.07	-367.05	-505.01	1244.47	40.1458922	-104.4938833	9.00	
7430.00†	89.220	359.225	6762.94	-268.05	-405.51	1245.35	40.1461652	-104.4938761	9.00	
7439.04	90.000	358.994	6763.00†	-259.08	-396.47	1245.21	40.1461900	-104.4938762	9.00	LP/TPZ



Planned Wellpath Report

Guttersen Y12-725 (REV-B.1) PWP

Page 4 of 8



REFERENCE WELLPATH IDENTIFICATION

Operator	NOBLE ENERGY, INC	Well	Guttersen Y12-725
Field	WELD COUNTY (NOBLE NAD 83 GRID)	API/Legal	
Facility	SEC.12-T02N-R64W	Wellbore	Guttersen Y12-725 PWB
Slot	SLOT#07 Guttersen Y12-725 (610'FSL & 2203'FEL,SEC.12)		

WELLPATH DATA (192 stations) † = interpolated, ‡ = extrapolated station

MD [ft]	Inclination [°]	Azimuth [°]	TVD [ft]	Vert Sect [ft]	North [ft]	East [ft]	Latitude	Longitude	DLS [°/100ft]	Comments
7530.00†	90.000	358.994	6763.00	-168.84	-305.53	1243.61	40.1464397	-104.4938782	0.00	
7630.00†	90.000	358.994	6763.00	-69.64	-205.54	1241.85	40.1467142	-104.4938805	0.00	
7730.00†	90.000	358.994	6763.00	29.57	-105.56	1240.10	40.1469887	-104.4938827	0.00	
7830.00†	90.000	358.994	6763.00	128.77	-5.57	1238.34	40.1472632	-104.4938849	0.00	
7930.00†	90.000	358.994	6763.00	227.98	94.41	1236.59	40.1475377	-104.4938871	0.00	
8030.00†	90.000	358.994	6763.00	327.18	194.40	1234.83	40.1478122	-104.4938894	0.00	
8130.00†	90.000	358.994	6763.00	426.39	294.38	1233.07	40.1480867	-104.4938916	0.00	
8230.00†	90.000	358.994	6763.00	525.59	394.36	1231.32	40.1483612	-104.4938938	0.00	
8330.00†	90.000	358.994	6763.00	624.79	494.35	1229.56	40.1486357	-104.4938960	0.00	
8430.00†	90.000	358.994	6763.00	724.00	594.33	1227.81	40.1489102	-104.4938982	0.00	
8530.00†	90.000	358.994	6763.00	823.20	694.32	1226.05	40.1491847	-104.4939005	0.00	
8630.00†	90.000	358.994	6763.00	922.41	794.30	1224.29	40.1494592	-104.4939027	0.00	
8730.00†	90.000	358.994	6763.00	1021.61	894.29	1222.54	40.1497337	-104.4939049	0.00	
8830.00†	90.000	358.994	6763.00	1120.82	994.27	1220.78	40.1500082	-104.4939071	0.00	
8930.00†	90.000	358.994	6763.00	1220.02	1094.26	1219.03	40.1502827	-104.4939094	0.00	
9030.00†	90.000	358.994	6763.00	1319.22	1194.24	1217.27	40.1505572	-104.4939116	0.00	
9130.00†	90.000	358.994	6763.00	1418.43	1294.23	1215.52	40.1508317	-104.4939138	0.00	
9230.00†	90.000	358.994	6763.00	1517.63	1394.21	1213.76	40.1511062	-104.4939160	0.00	
9330.00†	90.000	358.994	6763.00	1616.84	1494.20	1212.00	40.1513807	-104.4939183	0.00	
9430.00†	90.000	358.994	6763.00	1716.04	1594.18	1210.25	40.1516552	-104.4939205	0.00	
9530.00†	90.000	358.994	6763.00	1815.25	1694.16	1208.49	40.1519297	-104.4939227	0.00	
9630.00†	90.000	358.994	6763.00	1914.45	1794.15	1206.74	40.1522042	-104.4939249	0.00	
9730.00†	90.000	358.994	6763.00	2013.65	1894.13	1204.98	40.1524787	-104.4939271	0.00	
9830.00†	90.000	358.994	6763.00	2112.86	1994.12	1203.22	40.1527531	-104.4939294	0.00	
9930.00†	90.000	358.994	6763.00	2212.06	2094.10	1201.47	40.1530276	-104.4939316	0.00	
10030.00†	90.000	358.994	6763.00	2311.27	2194.09	1199.71	40.1533021	-104.4939338	0.00	
10130.00†	90.000	358.994	6763.00	2410.47	2294.07	1197.96	40.1535766	-104.4939360	0.00	
10230.00†	90.000	358.994	6763.00	2509.68	2394.06	1196.20	40.1538511	-104.4939383	0.00	
10330.00†	90.000	358.994	6763.00	2608.88	2494.04	1194.45	40.1541256	-104.4939405	0.00	
10430.00†	90.000	358.994	6763.00	2708.08	2594.03	1192.69	40.1544001	-104.4939427	0.00	
10530.00†	90.000	358.994	6763.00	2807.29	2694.01	1190.93	40.1546746	-104.4939449	0.00	
10630.00†	90.000	358.994	6763.00	2906.49	2793.99	1189.18	40.1549491	-104.4939471	0.00	
10730.00†	90.000	358.994	6763.00	3005.70	2893.98	1187.42	40.1552236	-104.4939494	0.00	
10830.00†	90.000	358.994	6763.00	3104.90	2993.96	1185.67	40.1554981	-104.4939516	0.00	
10930.00†	90.000	358.994	6763.00	3204.11	3093.95	1183.91	40.1557726	-104.4939538	0.00	
11030.00†	90.000	358.994	6763.00	3303.31	3193.93	1182.15	40.1560471	-104.4939560	0.00	
11130.00†	90.000	358.994	6763.00	3402.51	3293.92	1180.40	40.1563216	-104.4939583	0.00	
11230.00†	90.000	358.994	6763.00	3501.72	3393.90	1178.64	40.1565961	-104.4939605	0.00	
11330.00†	90.000	358.994	6763.00	3600.92	3493.89	1176.89	40.1568706	-104.4939627	0.00	
11430.00†	90.000	358.994	6763.00	3700.13	3593.87	1175.13	40.1571451	-104.4939649	0.00	
11530.00†	90.000	358.994	6763.00	3799.33	3693.86	1173.38	40.1574196	-104.4939672	0.00	
11630.00†	90.000	358.994	6763.00	3898.54	3793.84	1171.62	40.1576941	-104.4939694	0.00	
11730.00†	90.000	358.994	6763.00	3997.74	3893.83	1169.86	40.1579686	-104.4939716	0.00	
11830.00†	90.000	358.994	6763.00	4096.94	3993.81	1168.11	40.1582431	-104.4939738	0.00	
11930.00†	90.000	358.994	6763.00	4196.15	4093.79	1166.35	40.1585176	-104.4939760	0.00	



Planned Wellpath Report

Guttersen Y12-725 (REV-B.1) PWP
Page 5 of 8



REFERENCE WELLPATH IDENTIFICATION			
Operator	NOBLE ENERGY, INC	Well	Guttersen Y12-725
Field	WELD COUNTY (NOBLE NAD 83 GRID)	API/Legal	
Facility	SEC.12-T02N-R64W	Wellbore	Guttersen Y12-725 PWB
Slot	SLOT#07 Guttersen Y12-725 (610'FSL & 2203'FEL, SEC.12)		

WELLPATH DATA (192 stations) † = interpolated, ‡ = extrapolated station										
MD [ft]	Inclination [°]	Azimuth [°]	TVD [ft]	Vert Sect [ft]	North [ft]	East [ft]	Latitude	Longitude	DLS [°/100ft]	Comments
12030.00†	90.000	358.994	6763.00	4295.35	4193.78	1164.60	40.1587921	-104.4939783	0.00	
12130.00†	90.000	358.994	6763.00	4394.56	4293.76	1162.84	40.1590666	-104.4939805	0.00	
12230.00†	90.000	358.994	6763.00	4493.76	4393.75	1161.08	40.1593411	-104.4939827	0.00	
12330.00†	90.000	358.994	6763.00	4592.97	4493.73	1159.33	40.1596156	-104.4939849	0.00	
12430.00†	90.000	358.994	6763.00	4692.17	4593.72	1157.57	40.1598901	-104.4939872	0.00	
12530.00†	90.000	358.994	6763.00	4791.37	4693.70	1155.82	40.1601645	-104.4939894	0.00	
12630.00†	90.000	358.994	6763.00	4890.58	4793.69	1154.06	40.1604390	-104.4939916	0.00	
12730.00†	90.000	358.994	6763.00	4989.78	4893.67	1152.31	40.1607135	-104.4939938	0.00	
12830.00†	90.000	358.994	6763.00	5088.99	4993.66	1150.55	40.1609880	-104.4939961	0.00	
12930.00†	90.000	358.994	6763.00	5188.19	5093.64	1148.79	40.1612625	-104.4939983	0.00	
13030.00†	90.000	358.994	6763.00	5287.40	5193.63	1147.04	40.1615370	-104.4940005	0.00	
13130.00†	90.000	358.994	6763.00	5386.60	5293.61	1145.28	40.1618115	-104.4940027	0.00	
13230.00†	90.000	358.994	6763.00	5485.80	5393.59	1143.53	40.1620860	-104.4940050	0.00	
13330.00†	90.000	358.994	6763.00	5585.01	5493.58	1141.77	40.1623605	-104.4940072	0.00	
13430.00†	90.000	358.994	6763.00	5684.21	5593.56	1140.01	40.1626350	-104.4940094	0.00	
13530.00†	90.000	358.994	6763.00	5783.42	5693.55	1138.26	40.1629095	-104.4940116	0.00	
13630.00†	90.000	358.994	6763.00	5882.62	5793.53	1136.50	40.1631840	-104.4940138	0.00	
13730.00†	90.000	358.994	6763.00	5981.83	5893.52	1134.75	40.1634585	-104.4940161	0.00	
13830.00†	90.000	358.994	6763.00	6081.03	5993.50	1132.99	40.1637330	-104.4940183	0.00	
13930.00†	90.000	358.994	6763.00	6180.23	6093.49	1131.24	40.1640075	-104.4940205	0.00	
14030.00†	90.000	358.994	6763.00	6279.44	6193.47	1129.48	40.1642820	-104.4940227	0.00	
14130.00†	90.000	358.994	6763.00	6378.64	6293.46	1127.72	40.1645565	-104.4940250	0.00	
14230.00†	90.000	358.994	6763.00	6477.85	6393.44	1125.97	40.1648310	-104.4940272	0.00	
14330.00†	90.000	358.994	6763.00	6577.05	6493.42	1124.21	40.1651055	-104.4940294	0.00	
14430.00†	90.000	358.994	6763.00	6676.26	6593.41	1122.46	40.1653800	-104.4940316	0.00	
14530.00†	90.000	358.994	6763.00	6775.46	6693.39	1120.70	40.1656545	-104.4940339	0.00	
14630.00†	90.000	358.994	6763.00	6874.66	6793.38	1118.94	40.1659290	-104.4940361	0.00	
14730.00†	90.000	358.994	6763.00	6973.87	6893.36	1117.19	40.1662035	-104.4940383	0.00	
14830.00†	90.000	358.994	6763.00	7073.07	6993.35	1115.43	40.1664780	-104.4940405	0.00	
14930.00†	90.000	358.994	6763.00	7172.28	7093.33	1113.68	40.1667525	-104.4940428	0.00	
15030.00†	90.000	358.994	6763.00	7271.48	7193.32	1111.92	40.1670269	-104.4940450	0.00	
15130.00†	90.000	358.994	6763.00	7370.69	7293.30	1110.17	40.1673014	-104.4940472	0.00	
15230.00†	90.000	358.994	6763.00	7469.89	7393.29	1108.41	40.1675759	-104.4940494	0.00	
15330.00†	90.000	358.994	6763.00	7569.09	7493.27	1106.65	40.1678504	-104.4940516	0.00	
15430.00†	90.000	358.994	6763.00	7668.30	7593.26	1104.90	40.1681249	-104.4940539	0.00	
15530.00†	90.000	358.994	6763.00	7767.50	7693.24	1103.14	40.1683994	-104.4940561	0.00	
15630.00†	90.000	358.994	6763.00	7866.71	7793.22	1101.39	40.1686739	-104.4940583	0.00	
15730.00†	90.000	358.994	6763.00	7965.91	7893.21	1099.63	40.1689484	-104.4940605	0.00	
15830.00†	90.000	358.994	6763.00	8065.12	7993.19	1097.87	40.1692229	-104.4940628	0.00	
15930.00†	90.000	358.994	6763.00	8164.32	8093.18	1096.12	40.1694974	-104.4940650	0.00	
16030.00†	90.000	358.994	6763.00	8263.52	8193.16	1094.36	40.1697719	-104.4940672	0.00	
16130.00†	90.000	358.994	6763.00	8362.73	8293.15	1092.61	40.1700464	-104.4940694	0.00	
16230.00†	90.000	358.994	6763.00	8461.93	8393.13	1090.85	40.1703209	-104.4940717	0.00	
16330.00†	90.000	358.994	6763.00	8561.14	8493.12	1089.10	40.1705954	-104.4940739	0.00	
16430.00†	90.000	358.994	6763.00	8660.34	8593.10	1087.34	40.1708699	-104.4940761	0.00	

REFERENCE WELLPATH IDENTIFICATION

Operator	NOBLE ENERGY, INC	Well	Guttersen Y12-725
Field	WELD COUNTY (NOBLE NAD 83 GRID)	API/Legal	
Facility	SEC.12-T02N-R64W	Wellbore	Guttersen Y12-725 PWB
Slot	SLOT#07 Guttersen Y12-725 (610'FSL & 2203'FEL,SEC.12)		

WELLPATH DATA (192 stations) † = interpolated, ‡ = extrapolated station

MD [ft]	Inclination [°]	Azimuth [°]	TVD [ft]	Vert Sect [ft]	North [ft]	East [ft]	Latitude	Longitude	DLS [°/100ft]	Comments
16530.00†	90.000	358.994	6763.00	8759.55	8693.09	1085.58	40.1711444	-104.4940783	0.00	
16630.00†	90.000	358.994	6763.00	8858.75	8793.07	1083.83	40.1714189	-104.4940806	0.00	
16730.00†	90.000	358.994	6763.00	8957.95	8893.05	1082.07	40.1716934	-104.4940828	0.00	
16830.00†	90.000	358.994	6763.00	9057.16	8993.04	1080.32	40.1719679	-104.4940850	0.00	
16930.00†	90.000	358.994	6763.00	9156.36	9093.02	1078.56	40.1722424	-104.4940872	0.00	
17030.00†	90.000	358.994	6763.00	9255.57	9193.01	1076.80	40.1725169	-104.4940895	0.00	
17130.00†	90.000	358.994	6763.00	9354.77	9292.99	1075.05	40.1727914	-104.4940917	0.00	
17230.00†	90.000	358.994	6763.00	9453.98	9392.98	1073.29	40.1730659	-104.4940939	0.00	
17330.00†	90.000	358.994	6763.00	9553.18	9492.96	1071.54	40.1733404	-104.4940961	0.00	
17430.00†	90.000	358.994	6763.00	9652.38	9592.95	1069.78	40.1736148	-104.4940983	0.00	
17530.00†	90.000	358.994	6763.00	9751.59	9692.93	1068.03	40.1738893	-104.4941006	0.00	
17612.67	90.000	358.994	6763.00‡	9833.60	9775.59	1066.57	40.1741163	-104.4941024	0.00	BHL

HOLE & CASING SECTIONS - Ref Wellbore: Guttersen Y12-725 PWB Ref Wellpath: Guttersen Y12-725 (REV-B.1) PWP

String/Diameter	Start MD [ft]	End MD [ft]	Interval [ft]	Start TVD [ft]	End TVD [ft]	Start N/S [ft]	Start E/W [ft]	End N/S [ft]	End E/W [ft]
9.625in Casing Surface	30.00	1950.00	1920.00	30.00	1950.00	0.00	0.00	0.00	0.00
8.5in Open Hole	1950.00	17612.00	15662.00	1950.00	6763.00	0.00	0.00	9774.92	1066.59

TARGETS

Name	MD [ft]	TVD [ft]	North [ft]	East [ft]	Grid East [US ft]	Grid North [US ft]	Latitude	Longitude	Shape
DP 455 Sec.01-T2N-R64W	N/A	-2.00	-1.16	-135.02	3279878.76	1298091.40	40.1473180	-104.4987970	polygon
2D Polygon: dimensions not calculated									
DP 455 Sec.12-T2N-R64W	N/A	-2.00	-1.16	-135.02	3279878.76	1298091.40	40.1473180	-104.4987970	polygon
2D Polygon: dimensions not calculated									
2) Guttersen Y12-725 BHL (200'FNL & 978'FEL,SEC.01)	17612.67	6763.00	9775.59	1066.57	3281080.30	1307867.73	40.1741163	-104.4941024	point
Guttersen Y12-725 BPZ (200'FNL & 978'FEL,SEC.01)	N/A	6763.00	9775.59	1066.57	3281080.30	1307867.73	40.1741163	-104.4941024	point
1) Guttersen Y12-725 LP (200'FSL & 964'FEL,SEC.12)	7439.04	6763.00	-396.47	1245.21	3281258.93	1297696.11	40.1461900	-104.4938762	point
DP 455 West Hardline(200'FNL/FSL&300'FEL/FWL)	N/A	6850.00	-0.26	-22.64	3279991.13	1298092.31	40.1473170	-104.4983950	polygon
2D Polygon: dimensions not calculated									



Planned Wellpath Report

Guttersen Y12-725 (REV-B.1) PWP

Page 7 of 8



REFERENCE WELLPATH IDENTIFICATION			
Operator	NOBLE ENERGY, INC	Well	Guttersen Y12-725
Field	WELD COUNTY (NOBLE NAD 83 GRID)	API/Legal	
Facility	SEC.12-T02N-R64W	Wellbore	Guttersen Y12-725 PWB
Slot	SLOT#07 Guttersen Y12-725 (610'FSL & 2203'FEL, SEC.12)		

SURVEY PROGRAM - Ref Wellbore: Guttersen Y12-725 PWB Ref Wellpath: Guttersen Y12-725 (REV-B.1) PWP				
Start MD [ft]	End MD [ft]	Positional Uncertainty Model	Log Name/Comment	Wellbore
30.00	1950.00	OWSG MWD rev2 (MS+IFR1)		Guttersen Y12-725 PWB
1950.00	17612.67	OWSG MWD rev2 (MS+IFR1)		Guttersen Y12-725 PWB

REFERENCE WELLPATH IDENTIFICATION			
Operator	NOBLE ENERGY, INC	Well	Guttersen Y12-725
Field	WELD COUNTY (NOBLE NAD 83 GRID)	API/Legal	
Facility	SEC.12-T02N-R64W	Wellbore	Guttersen Y12-725 PWB
Slot	SLOT#07 Guttersen Y12-725 (610'FSL & 2203'FEL,SEC.12)		

WELLPATH COMMENTS				
MD [ft]	Inclination [°]	Azimuth [°]	TVD [ft]	Comment
918.33	0.000	134.633	918.33	Upper Pierre Aquifer Top
1638.82	0.000	134.633	1638.82	Upper Pierre Aquifer Base
3889.46	22.952	134.633	3800.28	Parkman
4240.98	22.952	134.633	4123.97	Sussex
5136.52	22.952	134.633	4948.62	Shannon
6258.32	22.952	134.633	5981.61	Teepee Buttes
6975.64	50.362	13.192	6608.30	Sharon Springs
7038.30	55.632	10.677	6646.00	Top A Chalk, Top A Marl
7108.83	61.618	8.199	6682.71	Top B Chalk
7213.17	70.542	4.998	6724.98	Top B Marl

DESIGN COMMENTS				
MD [ft]	Inclination [°]	Azimuth [°]	TVD [ft]	Comment
30.00	0.000	134.633	30.00	Tie On
2000.00	0.000	134.633	2000.00	End of Tangent
3147.58	22.952	134.633	3117.14	Build (XS)
6259.17	22.952	134.633	5982.39	KOP
7439.04	90.000	358.994	6763.00	LP/TPZ
17612.67	90.000	358.994	6763.00	BHL



Closest Approach Clearance Summary Report

Guttersen Y12-725 (REV-B.1) PWP - SPE WPTS Stop Drilling HSE Risk (2017)
Page 1 of 3



REFERENCE WELLPATH IDENTIFICATION			
Operator	NOBLE ENERGY, INC	Well	Guttersen Y12-725
Field	WELD COUNTY (NOBLE NAD 83 GRID)	API/Legal	
Facility	SEC.12-T02N-R64W	Wellbore	Guttersen Y12-725 PWB
Slot	SLOT#07 Guttersen Y12-725 (610'FSL & 2203'FEL,SEC.12)		

REPORT SETUP INFORMATION			
Projection System	NAD83 / Lambert Colorado SP, Northern Zone (501), US feet	Software System	WellArchitect® 6.0
North Reference	Grid	User	Guenaler
Scale	0.999958	Report Generated	2/12/2024 at 10:39:12 AM
Convergence at slot	0.65° East	Database	WA_Denver

WELLPATH LOCATION						
	Local coordinates		Grid coordinates		Geographic coordinates	
	North[ft]	East[ft]	Easting[US ft]	Northing[US ft]	Latitude	Longitude
Slot Location	1.16	135.02	3280013.78	1298092.57	40°08'50.3412"N	104°29'53.9304"W
Facility Reference Pt			3279878.76	1298091.40	40°08'50.3448"N	104°29'55.6692"W
Field Reference Pt			3000000.00	4454105.15	48°46'34.3150"N	105°30'0.0000"W

WELLPATH DATUM			
Calculation method	Minimum Curvature	RIG (4866'GL+30'KB@4896'RKB) (RKB) to Facility Vertical Datum	4894.00ft
Horizontal Reference Pt	Slot	RIG (4866'GL+30'KB@4896'RKB) (RKB) to Mean Sea Level	4894.00ft
Vertical Reference Pt	RIG (4866'GL+30'KB@4896'RKB) (RKB)	RIG (4866'GL+30'KB@4896'RKB) (RKB) to Ground Level at Slot (SLOT#07 Guttersen Y12-725 (610'FSL & 2203'FEL,SEC.12))	4894.00ft
MD Reference Pt	RIG (4866'GL+30'KB@4896'RKB) (RKB)		
Field Vertical Reference	Mean Sea Level		

POSITIONAL UNCERTAINTY CALCULATION SETTINGS					
Ellipse Confidence Limit	3.50 Std Dev	Ellipse Start MD	30.00ft	Surface Position Uncertainty	included
Declination	7.63° East of TN	Dip Angle	66.38°	Mag Field Strength	51693 nT
Slot Surface Uncertainty @1SD		Horizontal	0.100ft	Vertical	1.000ft
Facility Surface Uncertainty @1SD		Horizontal	8.200ft	Vertical	3.000ft
Positional Uncertainty values in the WELLPATH DATA table are the projection of the ellipsoid of uncertainty onto the vertical and horizontal planes					



Closest Approach Clearance Summary Report

Guttersen Y12-725 (REV-B.1) PWP - SPE WPTS Stop Drilling HSE Risk (2017)



REFERENCE WELLPATH IDENTIFICATION			
Operator	NOBLE ENERGY, INC	Well	Guttersen Y12-725
Field	WELD COUNTY (NOBLE NAD 83 GRID)	API/Legal	
Facility	SEC.12-T02N-R64W	Wellbore	Guttersen Y12-725 PWB
Slot	SLOT#07 Guttersen Y12-725 (610'FSL & 2203'FEL, SEC.12)		

PROXIMITY-SCAN RULE			
Rule Name	SPE WPTS Stop Drilling HSE Risk (2017)	Rule Based On	Ratio
Plane of Rule	Closest Approach	Threshold Value	1.00
Include Casing & Hole Size	yes	Apply Cone of Safety	no

HOLE & CASING SECTIONS - Ref Wellbore: Guttersen Y12-725 PWB Ref Wellpath: Guttersen Y12-725 (REV-B.1) PWP									
String/Diameter	Start MD [ft]	End MD [ft]	Interval [ft]	Start TVD [ft]	End TVD [ft]	Start N/S [ft]	Start E/W [ft]	End N/S [ft]	End E/W [ft]
9.625in Casing Surface	30.00	1950.00	1920.00	30.00	1950.00	0.00	0.00	0.00	0.00
8.5in Open Hole	1950.00	17612.00	15662.00	1950.00	6763.00	0.00	0.00	9774.92	1066.59

SURVEY PROGRAM - Ref Wellbore: Guttersen Y12-725 PWB Ref Wellpath: Guttersen Y12-725 (REV-B.1) PWP				
Start MD [ft]	End MD [ft]	Positional Uncertainty Model	Log Name/Comment	Wellbore
30.00	1950.00	OWSG MWD rev2 (MS+IFR1)		Guttersen Y12-725 PWB
1950.00	17612.67	OWSG MWD rev2 (MS+IFR1)		Guttersen Y12-725 PWB



Closest Approach Clearance Summary Report

Guttersen Y12-725 (REV-B.1) PWP - SPE WPTS Stop Drilling HSE Risk (2017)



REFERENCE WELLPATH IDENTIFICATION			
Operator	NOBLE ENERGY, INC	Well	Guttersen Y12-725
Field	WELD COUNTY (NOBLE NAD 83 GRID)	API/Legal	
Facility	SEC.12-T02N-R64W	Wellbore	Guttersen Y12-725 PWB
Slot	SLOT#07 Guttersen Y12-725 (610'FSL & 2203'FEL,SEC.12)		

CALCULATION RANGE & CUTOFF		
From: 30.00ft MD	To: 17612.67ft MD	C-C Cutoff: (none)

OFFSET WELL CLEARANCE SUMMARY (16 Offset Wellpaths selected) Ratios are calculated in Closest Approach plane

Offset Facility	Offset Slot	Offset Well	Offset Wellbore	Offset Wellpath	Wellbore Status	C-C Clearance Distance			Rule Separation Ratio			
						Ref MD [ft]	Min C-C Clear Dist [ft]	Diverging from MD [ft]	Ref MD of Min Ratio [ft]	Min Ratio	Min Ratio Dvrg from [ft]	Rule Status
SEC.12-T02N-R64W	SLOT#08 Guttersen Y12-715 (610'FSL & 2181'FEL,SEC.12)	Guttersen Y12-715	Guttersen Y12-715 PWB	Guttersen Y12-715 (REV-B.1) PWP	Planned	30.00	22.36	17612.67	2004.66	1.14	17612.67	PASS
SEC.12-T02N-R64W	SLOT#06 Guttersen Y12-734 (610'FSL & 2226'FEL,SEC.12)	Guttersen Y12-734	Guttersen Y12-734 PWB	Guttersen Y12-734 (REV-B.1) PWP	Planned	30.00	22.64	17612.67	2002.30	1.16	17612.67	PASS
SEC.12-T02N-R64W	SLOT#05 Guttersen Y12-744 (610'FSL & 2248'FEL,SEC.12)	Guttersen Y12-744	Guttersen Y12-744 PWB	Guttersen Y12-744 (REV-B.1) PWP	Planned	30.00	45.01	17612.67	2001.75	2.39	17612.67	PASS
SEC.12-T02N-R64W	SLOT#04 Guttersen Y12-754 (610'FSL & 2271'FEL,SEC.12)	Guttersen Y12-754	Guttersen Y12-754 PWB	Guttersen Y12-754 (REV-B.1) PWP	Planned	30.00	67.65	17612.67	2001.61	3.64	17612.67	PASS
SEC.25-T03N-R64W	SLOT#26 GUTTERSEN STATE D36-733 (1729'FNL & 1169'FEL,SEC.25)	GUTTERSEN STATE D36-733 (05-123-48639)	GUTTERSEN STATE D36-733 AWB	GUTTERSEN STATE D36-733 AWP	Drilling	17612.67	651.96	17612.67	17612.67	3.74	17612.67	PASS
SEC.25-T03N-R64W	SLOT#24 GUTTERSEN STATE D36-714 (1730'FNL & 1094'FEL,SEC.25)	GUTTERSEN STATE D36-714 (05-123-48842)	GUTTERSEN STATE D36-714 AWB	GUTTERSEN STATE D36-714 AWP	Drilling	17612.67	820.37	17612.67	17612.67	4.50	17612.67	PASS
SEC.25-T03N-R64W	SLOT#25 GUTTERSEN STATE D36-724 (1730'FNL & 1131'FEL,SEC.25)	GUTTERSEN STATE D36-724 (05-123-48633)	GUTTERSEN STATE D36-724 AWB	GUTTERSEN STATE D36-724 AWP	Drilling	17612.67	410.72	17612.67	17612.67	4.79	17612.67	PASS
SEC.12-T02N-R64W	SLOT#03 Guttersen Y12-763 (610'FSL & 2293'FEL,SEC.12)	Guttersen Y12-763	Guttersen Y12-763 PWB	Guttersen Y12-763 (REV-B.1) PWP	Planned	30.00	90.02	17612.67	2001.75	4.88	17612.67	PASS
SEC.12-T02N-R64W	SLOT#02 Guttersen Y12-773 (610'FSL & 2316'FEL,SEC.12)	Guttersen Y12-773	Guttersen Y12-773 PWB	Guttersen Y12-773 (REV-B.1) PWP	Planned	30.00	112.66	17612.67	2050.73	6.04	17612.67	PASS
SEC.25-T03N-R64W	SLOT#27 GUTTERSEN STATE D36-743 (1729'FNL & 1206'FEL,SEC.25)	GUTTERSEN STATE D36-743 (05-123-48638)	GUTTERSEN STATE D36-743 AWB	GUTTERSEN STATE D36-743 AWP	Drilling	17612.67	1220.01	17612.67	17612.67	6.13	17612.67	PASS
SEC.30-T03N-R63W	SLOT#09 GUTTERSEN YY06 -785 (601'FSL & 2502'FWL,SEC.30)	GUTTERSEN YY06 -785 (05-123-48640)	GUTTERSEN YY06 -785 AWB	GUTTERSEN YY06 -785 AWP	Drilling	12987.26	1333.14	17612.67	13015.06	7.12	17612.67	PASS
SEC.12-T02N-R64W	SLOT#01 Guttersen Y12-782 (610'FSL & 2338'FEL,SEC.12)	Guttersen Y12-782	Guttersen Y12-782 PWB	Guttersen Y12-782 (REV-B.1) PWP	Planned	30.00	135.03	17612.67	2002.87	7.36	17612.67	PASS
SEC.25-T03N-R64W	SLOT#28 GUTTERSEN STATE D36-752 (1322'FNL & 2088'FWL,SEC.25)	GUTTERSEN STATE D36-752 (05-123-48625)	GUTTERSEN STATE D36-752 AWB	GUTTERSEN STATE D36-752 AWP	Drilling	17612.67	1846.52	17612.67	17612.67	9.00	17612.67	PASS
SEC.25-T03N-R64W	SLOT#29 GUTTERSEN STATE D36-762 (1295'FNL & 2062'FWL,SEC.25)	GUTTERSEN STATE D36-762 (05-123-48632)	GUTTERSEN STATE D36-762 AWB	GUTTERSEN STATE D36-762 AWP	Drilling	17612.67	2395.73	17612.67	17612.67	11.55	17612.67	PASS
SEC.25-T03N-R64W	SLOT#30 GUTTERSEN STATE D36-771 (1268'FNL & 2035'FWL,SEC.25)	GUTTERSEN STATE D36-771 (05-123-48629)	GUTTERSEN STATE D36-771 AWB	GUTTERSEN STATE D36-771 AWP	Drilling	17612.67	3068.41	17612.67	17612.67	14.73	17612.67	PASS
SEC.25-T03N-R64W	SLOT#31 GUTTERSEN STATE D36-781 (1242'FNL & 2009'FWL,SEC.25)	GUTTERSEN STATE D36-781 (05-123-48626)	GUTTERSEN STATE D36-781 AWB	GUTTERSEN STATE D36-781 AWP	Drilling	17612.67	3672.01	17612.67	17612.67	17.58	17612.67	PASS