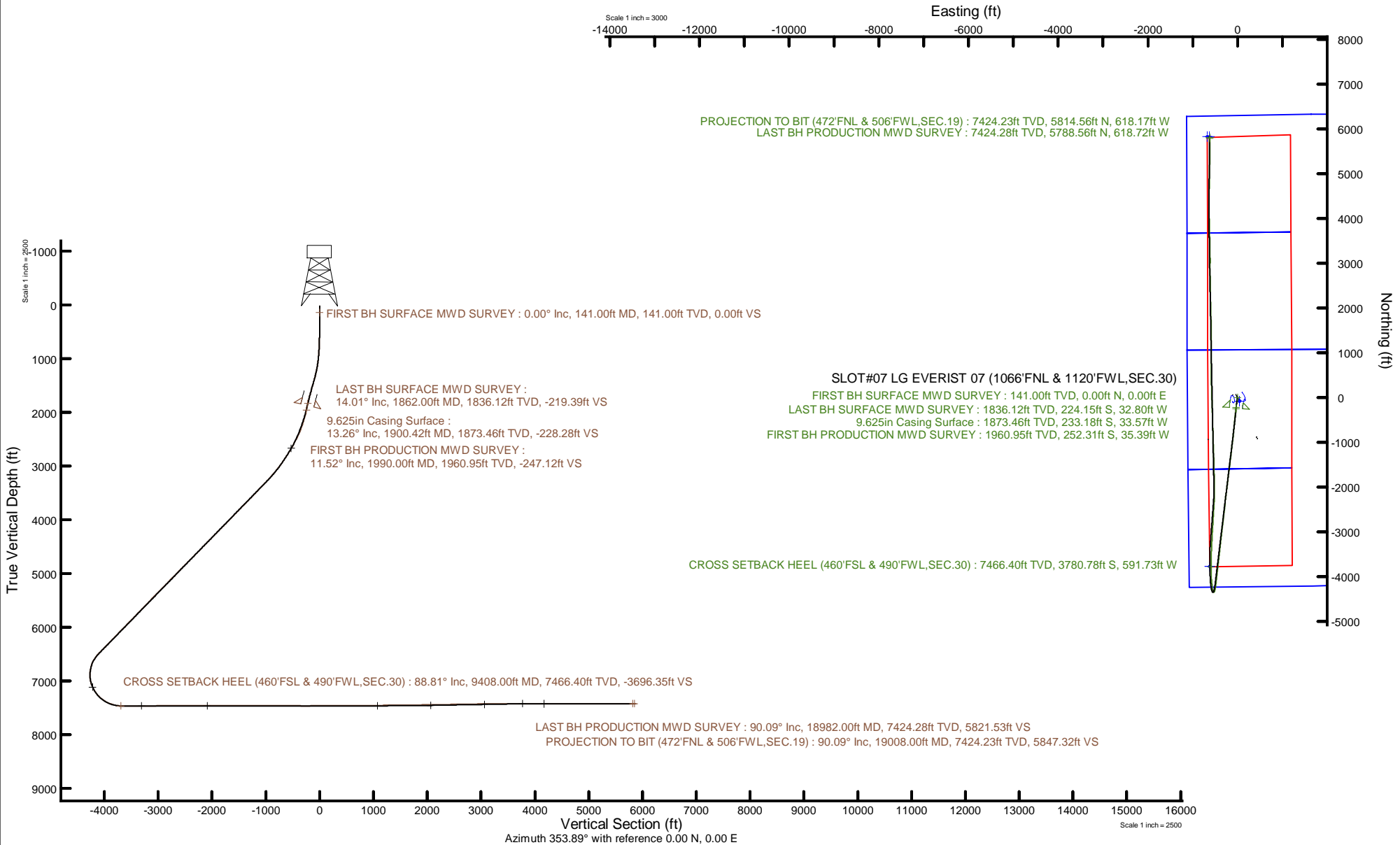


PETRO OPERATING CO, LLC

Location: COLORADO Slot: SLOT#07 LG EVERIST 07 (1066'FNL & 1120'FWL,SEC.30)
 Field: WELD COUNTY (NAD83/GRID) Well: LG EVERIST 07
 Facility: SEC.30-T02N-R66W Wellbore: LG EVERIST 07 PWB



Plot reference wellpath is LG EVERIST 07 PWP Rev-B.0	Grid System: NAD83 / Lambert Colorado SP, Northern Zone (G01), US feet
True vertical depths are referenced to Ensign 140 (23.5) (RKB)	North Reference: Grid north
Reference wellpath measured depths are referenced to Ensign 140 (23.5) (RKB)	Scale: True distance
Ensign 140 (23.5) (RKB) to Mean Sea Level: 4897.5 feet	Coordinates are in feet referenced to Slot
Mean Sea Level to Ground level (At Slot: SLOT#07 LG EVERIST 07 (1066'FNL & 1120'FWL,SEC.30)): 4874 feet	Depths are in feet
Offset wellpath MDs are referenced to each path's default MD datum	Created by: pairsetr on 2023-12-19; Database: WellArchitectDB





Actual Wellpath Report

LG EVERIST 07 AWP

Page 1 of 8



REFERENCE WELLPATH IDENTIFICATION			
Operator	PETRO OPERATING CO, LLC	Well	LG EVERIST 07
Field	WELD COUNTY (NAD83/GRID)	API	0512352230
Facility	SEC.30-T02N-R66W	Wellbore	LG EVERIST 07 AWB
Slot	SLOT#07 LG EVERIST 07 (1066'FNL & 1120'FWL,SEC.30)		

REPORT SETUP INFORMATION			
Projection System	NAD83 / Lambert Colorado SP, Northern Zone (501), US feet	Software System	WellArchitect® 6.0
North Reference	Grid	User	Painsetr
Scale	0.999960	Report Generated	12/19/2023 at 11:21:54 AM
Convergence at slot	0.44° East	Database	WellArchitectDB

WELLPATH LOCATION						
	Local coordinates		Grid coordinates		Geographic coordinates	
	North[ft]	East[ft]	Easting[US ft]	Northing[US ft]	Latitude	Longitude
Slot Location	78.28	-44.43	3188501.39	1284885.29	40.1134362°	-104.8260223°
Facility Reference Pt			3188545.81	1284807.01	40.1132204°	-104.8258656°
Field Reference Pt			3188545.81	1284807.01	40.1132204°	-104.8258656°

WELLPATH DATUM			
Calculation method	Minimum curvature	Ensign 140 (23.5') (RKB) to Facility Vertical Datum	4897.50ft
Horizontal Reference Pt	Slot	Ensign 140 (23.5') (RKB) to Mean Sea Level	4897.50ft
Vertical Reference Pt	Ensign 140 (23.5') (RKB)	Ensign 140 (23.5') (RKB) to Ground Level at Slot (SLOT#07 LG EVERIST 07 (1066'FNL & 1120'FWL,SEC.30))	23.50ft
MD Reference Pt	Ensign 140 (23.5') (RKB)	Section Origin	N 0.00, E 0.00 ft
Field Vertical Reference	Mean Sea Level	Section Azimuth	353.89°



Actual Wellpath Report

LG EVERIST 07 AWP

Page 2 of 8



REFERENCE WELLPATH IDENTIFICATION			
Operator	PETRO OPERATING CO, LLC	Well	LG EVERIST 07
Field	WELD COUNTY (NAD83/GRID)	API	0512352230
Facility	SEC.30-T02N-R66W	Wellbore	LG EVERIST 07 AWB
Slot	SLOT#07 LG EVERIST 07 (1066'FNL & 1120'FWL,SEC.30)		

WELLPATH DATA (216 stations) † = interpolated, ‡ = extrapolated station												
MD [ft]	Inclination [°]	Azimuth [°]	TVD [ft]	Vert Sect [ft]	North [ft]	East [ft]	Grid East [US ft]	Grid North [US ft]	Latitude	Longitude	DLS [°/100ft]	Comments
0.00†	0.000	N/A	0.00	0.00	0.00	0.00	3188501.39	1284885.29	40.1134362	-104.8260223	0.00	
23.50	0.000	N/A	23.50	0.00	0.00	0.00	3188501.39	1284885.29	40.1134362	-104.8260223	0.00	
141.00	0.530	N/A	141.00	0.00	0.00	0.00	3188501.39	1284885.29	40.1134362	-104.8260223	0.00	FIRST BH SURFACE MWD SURVEY
236.00	0.390	161.340	236.00	-0.32	-0.31	0.10	3188501.49	1284884.98	40.1134354	-104.8260219	0.41	
331.00	0.350	121.930	331.00	-0.81	-0.77	0.45	3188501.84	1284884.52	40.1134341	-104.8260207	0.27	
421.00	0.420	169.160	420.99	-1.31	-1.24	0.75	3188502.13	1284884.05	40.1134328	-104.8260197	0.35	
510.00	0.360	168.810	509.99	-1.91	-1.83	0.86	3188502.25	1284883.46	40.1134312	-104.8260193	0.07	
599.00	0.740	236.760	598.99	-2.45	-2.42	0.44	3188501.82	1284882.87	40.1134295	-104.8260208	0.78	
688.00	1.910	201.650	687.96	-4.03	-4.11	-0.59	3188500.80	1284881.17	40.1134249	-104.8260245	1.54	
778.00	3.030	196.390	777.88	-7.55	-7.79	-1.81	3188499.57	1284877.50	40.1134149	-104.8260290	1.27	
867.00	4.030	191.310	866.71	-12.71	-13.11	-3.09	3188498.29	1284872.17	40.1134003	-104.8260337	1.18	
957.00	5.650	188.810	956.39	-20.01	-20.59	-4.39	3188496.99	1284864.70	40.1133798	-104.8260386	1.81	
1047.00	7.170	191.180	1045.82	-29.65	-30.48	-6.16	3188495.23	1284854.81	40.1133527	-104.8260452	1.71	
1137.00	8.940	188.970	1134.93	-41.77	-42.90	-8.34	3188493.05	1284842.39	40.1133186	-104.8260533	2.00	
1226.00	12.540	187.950	1222.36	-57.82	-59.30	-10.75	3188490.63	1284825.98	40.1132736	-104.8260624	4.05	
1315.00	15.030	189.540	1308.79	-78.31	-80.26	-14.00	3188487.38	1284805.03	40.1132162	-104.8260745	2.83	
1404.00	16.090	189.000	1394.52	-101.33	-103.82	-17.84	3188483.54	1284781.47	40.1131516	-104.8260889	1.20	
1494.00	16.160	188.480	1480.98	-125.49	-128.53	-21.64	3188479.74	1284756.77	40.1130838	-104.8261032	0.18	
1583.00	16.140	187.640	1566.47	-149.49	-153.04	-25.11	3188476.27	1284732.26	40.1130166	-104.8261162	0.26	
1672.00	15.300	186.620	1652.14	-172.96	-176.96	-28.11	3188473.27	1284708.33	40.1129510	-104.8261276	0.99	
1762.00	14.290	185.660	1739.16	-195.42	-199.81	-30.58	3188470.81	1284685.49	40.1128884	-104.8261371	1.15	
1862.00	14.010	184.770	1836.12	-219.39	-224.15	-32.80	3188468.59	1284661.14	40.1128216	-104.8261457	0.35	LAST BH SURFACE MWD SURVEY
1990.00	11.520	185.840	1960.95	-247.12	-252.31	-35.39	3188466.00	1284632.98	40.1127443	-104.8261557	1.95	FIRST BH PRODUCTION MWD SURVEY
2079.00	15.800	187.530	2047.41	-267.59	-273.18	-37.88	3188463.50	1284612.12	40.1126871	-104.8261652	4.83	
2169.00	15.400	186.230	2134.10	-291.18	-297.20	-40.79	3188460.60	1284588.10	40.1126212	-104.8261762	0.59	
2258.00	17.940	186.110	2219.35	-316.12	-322.58	-43.53	3188457.86	1284562.72	40.1125516	-104.8261867	2.85	
2348.00	21.760	185.730	2303.99	-346.01	-352.98	-46.67	3188454.72	1284532.33	40.1124683	-104.8261987	4.25	
2438.00	25.480	188.360	2386.43	-381.09	-388.74	-51.15	3188450.24	1284496.56	40.1123702	-104.8262157	4.30	
2527.00	26.240	185.900	2466.52	-418.87	-427.25	-55.96	3188445.43	1284458.05	40.1122646	-104.8262340	1.48	
2616.00	27.990	185.810	2545.74	-458.56	-467.61	-60.09	3188441.29	1284417.70	40.1121539	-104.8262499	1.97	
2706.00	29.420	185.440	2624.68	-500.88	-510.62	-64.33	3188437.06	1284374.68	40.1120359	-104.8262662	1.60	
2795.00	31.030	185.720	2701.57	-544.75	-555.21	-68.69	3188432.70	1284330.10	40.1119136	-104.8262830	1.82	
2884.00	32.660	185.700	2777.18	-590.71	-601.94	-73.36	3188428.03	1284283.38	40.1117854	-104.8263009	1.83	
2974.00	34.290	185.820	2852.24	-639.29	-651.32	-78.34	3188423.05	1284233.99	40.1116500	-104.8263201	1.81	
3063.00	35.840	185.720	2925.09	-689.33	-702.20	-83.48	3188417.91	1284183.12	40.1115104	-104.8263398	1.74	
3153.00	37.380	185.430	2997.33	-741.88	-755.61	-88.69	3188412.70	1284129.71	40.1113639	-104.8263599	1.72	
3242.00	38.900	185.940	3067.33	-795.69	-810.30	-94.14	3188407.25	1284075.02	40.1112139	-104.8263809	1.74	
3332.00	40.560	185.520	3136.54	-851.99	-867.54	-99.88	3188401.51	1284017.78	40.1110569	-104.8264030	1.87	
3421.00	42.010	186.760	3203.42	-909.37	-925.92	-106.17	3188395.22	1283959.40	40.1108968	-104.8264270	1.87	
3511.00	45.560	187.130	3268.38	-970.02	-987.73	-113.71	3188387.68	1283897.60	40.1107273	-104.8264556	3.95	
3600.00	43.360	187.740	3331.90	-1030.62	-1049.54	-121.76	3188379.63	1283835.79	40.1105578	-104.8264861	2.52	
3690.00	45.070	184.960	3396.41	-1091.90	-1111.90	-128.68	3188372.71	1283773.43	40.1103868	-104.8265126	2.87	
3780.00	43.150	188.510	3461.04	-1152.96	-1174.10	-135.99	3188365.40	1283711.24	40.1102162	-104.8265404	3.48	
3869.00	45.080	186.250	3524.94	-1213.20	-1235.53	-143.93	3188357.46	1283649.81	40.1100477	-104.8265704	2.80	
3959.00	45.390	187.040	3588.32	-1275.52	-1299.00	-151.32	3188350.07	1283586.35	40.1098737	-104.8265986	0.71	



Actual Wellpath Report

LG EVERIST 07 AWP

Page 3 of 8



REFERENCE WELLPATH IDENTIFICATION			
Operator	PETRO OPERATING CO, LLC	Well	LG EVERIST 07
Field	WELD COUNTY (NAD83/GRID)	API	0512352230
Facility	SEC.30-T02N-R66W	Wellbore	LG EVERIST 07 AWB
Slot	SLOT#07 LG EVERIST 07 (1066'FNL & 1120'FWL,SEC.30)		

WELLPATH DATA (216 stations)												
MD [ft]	Inclination [°]	Azimuth [°]	TVD [ft]	Vert Sect [ft]	North [ft]	East [ft]	Grid East [US ft]	Grid North [US ft]	Latitude	Longitude	DLS [°/100ft]	Comments
4048.00	45.100	187.250	3650.98	-1337.04	-1361.71	-159.18	3188342.21	1283523.64	40.1097017	-104.8266284	0.37	
4138.00	45.540	185.550	3714.26	-1399.51	-1425.30	-166.31	3188335.08	1283460.05	40.1095273	-104.8266556	1.43	
4227.00	43.910	187.580	3777.50	-1460.61	-1487.51	-173.46	3188327.94	1283397.84	40.1093567	-104.8266828	2.44	
4317.00	44.770	186.800	3841.87	-1521.82	-1549.92	-181.33	3188320.07	1283335.44	40.1091855	-104.8267126	1.13	
4406.00	45.470	188.050	3904.67	-1583.13	-1612.45	-189.48	3188311.91	1283272.91	40.1090140	-104.8267435	1.27	
4496.00	44.780	188.460	3968.17	-1644.91	-1675.57	-198.64	3188302.76	1283209.79	40.1088410	-104.8267779	0.83	
4585.00	45.070	186.530	4031.19	-1706.00	-1737.87	-206.83	3188294.56	1283147.49	40.1086701	-104.8268089	1.57	
4675.00	45.140	186.780	4094.71	-1768.18	-1801.20	-214.22	3188287.18	1283084.16	40.1084964	-104.8268371	0.21	
4764.00	45.170	186.500	4157.47	-1829.72	-1863.88	-221.52	3188279.88	1283021.49	40.1083245	-104.8268648	0.23	
4854.00	45.650	186.600	4220.65	-1892.26	-1927.55	-228.83	3188272.57	1282957.82	40.1081499	-104.8268927	0.54	
4943.00	45.330	186.870	4283.05	-1954.14	-1990.58	-236.27	3188265.13	1282894.79	40.1079771	-104.8269210	0.42	
5033.00	44.900	187.210	4346.56	-2016.24	-2053.87	-244.08	3188257.31	1282831.50	40.1078035	-104.8269507	0.55	
5122.00	44.860	187.500	4409.62	-2077.31	-2116.15	-252.12	3188249.27	1282769.22	40.1076327	-104.8269811	0.23	
5212.00	45.060	187.280	4473.31	-2139.15	-2179.22	-260.30	3188241.09	1282706.16	40.1074598	-104.8270121	0.28	
5301.00	44.880	186.260	4536.27	-2200.46	-2241.68	-267.72	3188233.68	1282643.70	40.1072885	-104.8270403	0.83	
5391.00	45.090	185.530	4599.93	-2262.69	-2304.96	-274.25	3188227.14	1282580.42	40.1071149	-104.8270653	0.62	
5481.00	44.960	185.420	4663.54	-2325.07	-2368.34	-280.33	3188221.07	1282517.05	40.1069410	-104.8270888	0.17	
5570.00	45.440	185.700	4726.25	-2386.91	-2431.20	-286.45	3188214.95	1282454.19	40.1067686	-104.8271124	0.58	
5659.00	45.430	186.270	4788.71	-2448.91	-2494.26	-293.06	3188208.34	1282391.13	40.1065957	-104.8271377	0.46	
5749.00	45.270	187.170	4851.96	-2511.34	-2557.84	-300.55	3188200.85	1282327.55	40.1064213	-104.8271662	0.73	
5839.00	45.270	187.480	4915.30	-2573.53	-2621.26	-308.70	3188192.70	1282264.14	40.1062474	-104.8271971	0.24	
5928.00	45.040	186.540	4978.06	-2634.98	-2683.89	-316.40	3188185.00	1282201.51	40.1060756	-104.8272263	0.79	
6018.00	44.860	186.440	5041.75	-2697.04	-2747.07	-323.59	3188177.81	1282138.34	40.1059024	-104.8272537	0.21	
6107.00	45.330	185.860	5104.58	-2758.64	-2809.74	-330.34	3188171.06	1282075.67	40.1057305	-104.8272795	0.70	
6197.00	45.090	187.320	5167.99	-2820.94	-2873.19	-337.67	3188163.73	1282012.22	40.1055565	-104.8273075	1.18	
6286.00	44.390	186.970	5231.21	-2881.92	-2935.35	-345.46	3188155.94	1281950.06	40.1053860	-104.8273370	0.83	
6376.00	44.950	186.130	5295.21	-2943.65	-2998.20	-352.68	3188148.72	1281887.21	40.1052136	-104.8273645	0.90	
6465.00	45.220	186.380	5358.05	-3005.22	-3060.85	-359.55	3188141.85	1281824.56	40.1050418	-104.8273907	0.36	
6555.00	45.170	186.390	5421.47	-3067.56	-3124.31	-366.65	3188134.75	1281761.10	40.1048677	-104.8274179	0.06	
6644.00	45.050	186.320	5484.28	-3129.13	-3186.98	-373.63	3188127.77	1281698.44	40.1046959	-104.8274445	0.15	
6734.00	44.890	186.700	5547.96	-3191.20	-3250.18	-380.84	3188120.56	1281635.25	40.1045225	-104.8274720	0.35	
6823.00	44.310	186.780	5611.33	-3252.12	-3312.24	-388.17	3188113.23	1281573.19	40.1043523	-104.8274999	0.65	
6913.00	44.210	185.710	5675.78	-3313.48	-3374.67	-395.00	3188106.40	1281510.76	40.1041811	-104.8275260	0.84	
7002.00	45.230	186.190	5739.02	-3374.72	-3436.96	-401.50	3188099.90	1281448.47	40.1040103	-104.8275509	1.21	
7092.00	44.650	187.020	5802.73	-3436.73	-3500.11	-408.81	3188092.59	1281385.33	40.1038371	-104.8275788	0.92	
7181.00	44.730	186.350	5866.00	-3497.77	-3562.27	-416.09	3188085.31	1281323.16	40.1036666	-104.8276065	0.54	
7271.00	45.190	186.370	5929.69	-3559.87	-3625.48	-423.14	3188078.26	1281259.96	40.1034932	-104.8276334	0.51	
7360.00	44.610	186.190	5992.73	-3621.23	-3687.92	-430.01	3188071.39	1281197.52	40.1033220	-104.8276596	0.67	
7450.00	44.840	186.470	6056.67	-3683.07	-3750.87	-436.99	3188064.41	1281134.58	40.1031493	-104.8276863	0.34	
7539.00	45.190	186.550	6119.59	-3744.50	-3813.41	-444.13	3188057.27	1281072.04	40.1029778	-104.8277135	0.40	
7629.00	44.930	186.850	6183.16	-3806.62	-3876.68	-451.56	3188049.84	1281008.77	40.1028043	-104.8277418	0.37	
7718.00	44.670	186.540	6246.31	-3867.77	-3938.97	-458.88	3188042.53	1280946.49	40.1026335	-104.8277696	0.38	
7808.00	44.470	186.530	6310.43	-3929.40	-4001.72	-466.06	3188035.34	1280883.74	40.1024614	-104.8277970	0.22	
7897.00	44.830	186.250	6373.74	-3990.47	-4063.88	-473.02	3188028.38	1280821.58	40.1022909	-104.8278236	0.46	
7987.00	44.900	186.240	6437.53	-4052.49	-4126.99	-479.93	3188021.47	1280758.47	40.1021178	-104.8278500	0.08	



Actual Wellpath Report

LG EVERIST 07 AWP

Page 4 of 8



REFERENCE WELLPATH IDENTIFICATION			
Operator	PETRO OPERATING CO, LLC	Well	LG EVERIST 07
Field	WELD COUNTY (NAD83/GRID)	API	0512352230
Facility	SEC.30-T02N-R66W	Wellbore	LG EVERIST 07 AWB
Slot	SLOT#07 LG EVERIST 07 (1066'FNL & 1120'FWL,SEC.30)		

WELLPATH DATA (216 stations) † = interpolated, ‡ = extrapolated station												
MD [ft]	Inclination [°]	Azimuth [°]	TVD [ft]	Vert Sect [ft]	North [ft]	East [ft]	Grid East [US ft]	Grid North [US ft]	Latitude	Longitude	DLS [°/100ft]	Comments
8076.00	45.150	186.490	5500.44	-4113.96	-4189.56	-486.91	3188014.50	1280695.90	40.1019462	-104.8278766	0.34	
8165.00	35.440	189.740	5568.25	-4169.71	-4246.48	-494.86	3188006.54	1280638.99	40.1017901	-104.8279066	11.16	
8255.00	25.960	192.610	5645.55	-4213.57	-4291.53	-503.60	3187997.81	1280593.94	40.1016666	-104.8279390	10.66	
8344.00	17.760	199.050	5728.09	-4244.36	-4323.43	-512.30	3187989.11	1280562.04	40.1015792	-104.8279710	9.59	
8434.00	11.740	216.820	5815.13	-4263.52	-4343.76	-522.28	3187979.13	1280541.71	40.1015236	-104.8280072	8.29	
8523.00	7.190	277.300	5903.08	-4268.87	-4350.32	-533.26	3187968.15	1280535.15	40.1015059	-104.8280467	11.56	
8613.00	12.700	329.080	5991.85	-4258.56	-4341.09	-543.96	3187957.45	1280544.38	40.1015314	-104.8280846	11.08	
8702.00	19.620	343.880	7077.32	-4234.93	-4318.31	-553.15	3187948.26	1280567.16	40.1015941	-104.8281169	8.99	
8792.00	28.910	349.380	7159.29	-4198.28	-4282.32	-561.37	3187940.04	1280603.14	40.1016931	-104.8281453	10.61	
8881.00	38.250	354.920	7233.37	-4149.16	-4233.62	-567.79	3187933.62	1280651.85	40.1018269	-104.8281669	11.04	
8971.00	45.300	355.240	7300.45	-4089.26	-4173.92	-572.92	3187928.49	1280711.54	40.1019909	-104.8281836	7.84	
9060.00	55.170	353.810	7357.31	-4020.94	-4105.91	-579.50	3187921.91	1280779.55	40.1021777	-104.8282053	11.16	
9150.00	64.030	357.480	7402.82	-3943.45	-4028.60	-585.27	3187916.14	1280856.86	40.1023900	-104.8282239	10.45	
9239.00	71.320	356.980	7436.60	-3861.31	-3946.42	-589.26	3187912.15	1280939.03	40.1026157	-104.8282359	8.21	
9329.00	80.120	359.550	7458.78	-3774.44	-3859.34	-591.86	3187909.55	1281026.11	40.1028548	-104.8282428	10.16	
9408.00†	88.810	0.625	7466.40	-3696.35	-3780.78	-591.73	3187909.68	1281104.67	40.1030704	-104.8282402	11.08	CROSS SETBACK HEEL (460'FSL & 490'FWL,SEC.30)
9418.00	89.910	0.760	7466.51	-3686.42	-3770.78	-591.61	3187909.80	1281114.66	40.1030979	-104.8282395	11.08	
9508.00	89.920	0.940	7466.64	-3597.08	-3680.79	-590.28	3187911.14	1281204.65	40.1033449	-104.8282323	0.20	
9597.00	89.820	0.940	7466.84	-3508.76	-3591.80	-588.82	3187912.60	1281293.63	40.1035891	-104.8282247	0.11	
9687.00	90.310	2.890	7466.74	-3419.64	-3501.86	-585.81	3187915.60	1281383.58	40.1038359	-104.8282115	2.23	
9776.00	89.850	2.390	7466.62	-3331.68	-3412.95	-581.71	3187919.70	1281472.48	40.1040799	-104.8281945	0.76	
9866.00	90.160	2.800	7466.61	-3242.71	-3323.05	-577.63	3187923.78	1281562.38	40.1043266	-104.8281775	0.57	
9955.00	90.740	2.230	7465.91	-3154.72	-3234.14	-573.73	3187927.68	1281651.29	40.1045706	-104.8281611	0.91	
10045.00	90.310	1.600	7465.09	-3065.61	-3144.19	-570.72	3187930.69	1281741.23	40.1048174	-104.8281479	0.85	
10134.00	90.430	4.430	7464.51	-2977.75	-3055.33	-566.04	3187935.37	1281830.09	40.1050612	-104.8281288	3.18	
10223.00	90.740	3.550	7463.60	-2890.13	-2966.55	-559.85	3187941.56	1281918.87	40.1053048	-104.8281042	1.05	
10312.00	90.400	3.370	7462.72	-2802.37	-2877.71	-554.48	3187946.93	1282007.70	40.1055485	-104.8280826	0.43	
10402.00	89.750	3.000	7462.60	-2713.55	-2787.85	-549.48	3187951.93	1282097.55	40.1057951	-104.8280623	0.83	
10491.00	90.220	3.120	7462.62	-2625.69	-2698.98	-544.73	3187956.68	1282186.42	40.1060390	-104.8280429	0.55	
10581.00	90.180	3.240	7462.31	-2536.87	-2609.12	-539.73	3187961.68	1282276.28	40.1062855	-104.8280226	0.14	
10670.00	90.430	3.470	7461.83	-2449.08	-2520.27	-534.52	3187966.88	1282365.12	40.1065293	-104.8280016	0.38	
10760.00	90.150	3.610	7461.38	-2360.36	-2430.45	-528.97	3187972.44	1282454.94	40.1067757	-104.8279793	0.35	
10849.00	89.530	3.890	7461.63	-2272.67	-2341.64	-523.15	3187978.26	1282543.75	40.1070194	-104.8279561	0.76	
10939.00	89.990	1.950	7462.00	-2183.79	-2251.76	-518.56	3187982.84	1282633.62	40.1072660	-104.8279373	2.22	
11028.00	89.690	1.460	7462.25	-2095.62	-2162.80	-515.91	3187985.49	1282722.58	40.1075101	-104.8279254	0.65	
11070.00	89.870	0.350	7462.41	-2053.94	-2120.81	-515.25	3187986.16	1282764.57	40.1076254	-104.8279219	2.68	
11159.00	89.710	1.240	7462.74	-1965.58	-2031.82	-514.02	3187987.39	1282853.56	40.1078697	-104.8279151	1.02	
11249.00	89.780	357.980	7463.14	-1876.04	-1941.83	-514.63	3187986.78	1282943.54	40.1081167	-104.8279148	3.62	
11338.00	89.710	358.030	7463.54	-1787.27	-1852.89	-517.73	3187983.68	1283032.48	40.1083609	-104.8279235	0.10	
11428.00	89.840	358.070	7463.89	-1697.51	-1762.94	-520.79	3187980.62	1283122.42	40.1086079	-104.8279320	0.15	
11518.00	90.140	357.970	7463.91	-1607.75	-1672.99	-523.90	3187977.51	1283212.36	40.1088548	-104.8279407	0.35	
11607.00	89.990	358.680	7463.81	-1519.01	-1584.03	-526.50	3187974.91	1283301.32	40.1090991	-104.8279476	0.82	
11697.00	90.140	358.930	7463.70	-1429.34	-1494.05	-528.38	3187973.03	1283391.30	40.1093461	-104.8279518	0.32	
11787.00	90.260	358.220	7463.39	-1339.65	-1404.08	-530.62	3187970.79	1283481.27	40.1095931	-104.8279574	0.80	
11876.00	90.020	358.040	7463.17	-1250.89	-1315.13	-533.52	3187967.89	1283570.21	40.1098373	-104.8279654	0.34	



Actual Wellpath Report

LG EVERIST 07 AWP

Page 5 of 8



REFERENCE WELLPATH IDENTIFICATION			
Operator	PETRO OPERATING CO, LLC	Well	LG EVERIST 07
Field	WELD COUNTY (NAD83/GRID)	API	0512352230
Facility	SEC.30-T02N-R66W	Wellbore	LG EVERIST 07 AWB
Slot	SLOT#07 LG EVERIST 07 (1066'FNL & 1120'FWL,SEC.30)		

WELLPATH DATA (216 stations)												
MD [ft]	Inclination [°]	Azimuth [°]	TVD [ft]	Vert Sect [ft]	North [ft]	East [ft]	Grid East [US ft]	Grid North [US ft]	Latitude	Longitude	DLS [°/100ft]	Comments
11965.00	89.740	358.510	7463.36	-1162.15	-1226.17	-536.20	3187965.21	1283659.17	40.1100816	-104.8279725	0.61	
12055.00	90.080	357.770	7463.50	-1072.40	-1136.22	-539.12	3187962.29	1283749.12	40.1103286	-104.8279805	0.90	
12144.00	90.080	357.730	7463.38	-983.60	-1047.29	-542.61	3187958.79	1283838.05	40.1105727	-104.8279906	0.04	
12234.00	89.830	358.790	7463.45	-893.86	-957.33	-545.35	3187956.06	1283928.00	40.1108197	-104.8279979	1.21	
12323.00	90.040	358.190	7463.55	-805.15	-868.36	-547.69	3187953.72	1284016.96	40.1110640	-104.8280039	0.71	
12413.00	89.890	358.580	7463.60	-715.43	-778.40	-550.23	3187951.18	1284106.92	40.1113110	-104.8280106	0.46	
12502.00	89.610	358.520	7463.99	-626.72	-689.43	-552.48	3187948.93	1284195.89	40.1115553	-104.8280162	0.32	
12592.00	89.890	358.560	7464.38	-537.02	-599.46	-554.77	3187946.64	1284285.86	40.1118023	-104.8280220	0.31	
12681.00	89.980	357.550	7464.48	-448.25	-510.51	-557.79	3187943.61	1284374.80	40.1120465	-104.8280303	1.14	
12771.00	89.580	358.530	7464.83	-358.49	-420.56	-560.87	3187940.54	1284464.74	40.1122935	-104.8280389	1.18	
12860.00	89.830	358.590	7465.29	-269.79	-331.59	-563.11	3187938.30	1284553.71	40.1125377	-104.8280445	0.29	
12949.00	90.660	357.360	7464.91	-181.02	-242.65	-566.25	3187935.16	1284642.65	40.1127819	-104.8280533	1.67	
13039.00	89.890	358.080	7464.40	-91.22	-152.72	-569.83	3187931.58	1284732.57	40.1130288	-104.8280637	1.10	
13128.00	90.190	358.020	7464.27	-2.46	-63.78	-572.86	3187928.55	1284821.51	40.1132731	-104.8280721	0.25	
13218.00	89.830	357.850	7464.26	87.32	26.16	-576.11	3187925.30	1284911.45	40.1135200	-104.8280813	0.44	
13307.00	90.470	358.310	7464.02	176.08	115.11	-579.09	3187922.32	1285000.40	40.1137642	-104.8280895	0.89	
13396.00	90.320	359.100	7463.41	264.76	204.09	-581.10	3187920.31	1285089.37	40.1140085	-104.8280943	0.90	
13486.00	90.440	358.370	7462.81	354.44	294.06	-583.09	3187918.32	1285179.34	40.1142555	-104.8280990	0.82	
13575.00	90.100	358.960	7462.39	443.13	383.04	-585.16	3187916.25	1285268.31	40.1144998	-104.8281040	0.77	
13665.00	90.500	358.330	7461.92	532.82	473.01	-587.29	3187914.12	1285358.28	40.1147468	-104.8281091	0.83	
13754.00	90.250	359.630	7461.34	621.46	561.99	-588.87	3187912.54	1285447.26	40.1149911	-104.8281124	1.49	
13844.00	89.820	358.730	7461.29	711.08	651.98	-590.16	3187911.25	1285537.24	40.1152382	-104.8281146	1.11	
13933.00	89.760	0.860	7461.61	799.60	740.98	-590.48	3187910.93	1285626.23	40.1154824	-104.8281133	2.39	
14023.00	90.130	1.140	7461.70	888.91	830.96	-588.91	3187912.50	1285716.21	40.1157294	-104.8281052	0.52	
14112.00	90.680	1.260	7461.07	977.18	919.94	-587.04	3187914.37	1285805.19	40.1159736	-104.8280962	0.63	
14202.00	91.480	359.800	7459.37	1066.56	1009.92	-586.21	3187915.20	1285895.16	40.1162206	-104.8280907	1.85	
14291.00	91.240	0.040	7457.26	1155.05	1098.89	-586.33	3187915.08	1285984.13	40.1164648	-104.8280888	0.38	
14381.00	91.360	359.790	7455.22	1244.53	1188.87	-586.47	3187914.94	1286074.11	40.1167118	-104.8280868	0.31	
14471.00	90.310	359.630	7453.91	1334.05	1278.86	-586.92	3187914.49	1286164.09	40.1169588	-104.8280860	1.18	
14560.00	90.590	359.730	7453.21	1422.59	1367.85	-587.42	3187913.99	1286253.08	40.1172031	-104.8280854	0.33	
14650.00	90.620	0.170	7452.26	1512.09	1457.85	-587.50	3187913.91	1286343.07	40.1174502	-104.8280832	0.49	
14739.00	90.680	358.630	7451.25	1600.67	1546.83	-588.43	3187912.98	1286432.06	40.1176944	-104.8280841	1.73	
14829.00	90.500	358.650	7450.32	1690.35	1636.80	-590.57	3187910.84	1286522.02	40.1179415	-104.8280893	0.20	
14918.00	90.680	358.590	7449.40	1779.05	1725.77	-592.71	3187908.70	1286610.99	40.1181857	-104.8280946	0.21	
15007.00	90.560	358.810	7448.44	1867.73	1814.75	-594.73	3187906.68	1286699.96	40.1184300	-104.8280994	0.28	
15097.00	90.650	358.520	7447.49	1957.41	1904.72	-596.83	3187904.58	1286789.92	40.1186770	-104.8281045	0.34	
15186.00	91.020	358.230	7446.19	2046.13	1993.67	-599.35	3187902.06	1286878.87	40.1189212	-104.8281111	0.53	
15276.00	91.050	358.760	7444.57	2135.82	2083.62	-601.71	3187899.70	1286968.82	40.1191682	-104.8281171	0.59	
15365.00	90.890	359.230	7443.06	2224.46	2172.60	-603.27	3187898.14	1287057.79	40.1194124	-104.8281203	0.56	
15455.00	90.830	358.390	7441.71	2314.11	2262.57	-605.14	3187896.27	1287147.76	40.1196594	-104.8281245	0.94	
15544.00	90.960	359.150	7440.32	2402.78	2351.53	-607.05	3187894.36	1287236.72	40.1199037	-104.8281289	0.87	
15634.00	90.920	359.300	7438.84	2492.38	2441.51	-608.27	3187893.14	1287326.70	40.1201507	-104.8281308	0.17	
15724.00	90.920	358.940	7437.40	2581.99	2531.49	-609.65	3187891.76	1287416.67	40.1203977	-104.8281333	0.40	
15813.00	90.990	359.200	7435.92	2670.62	2620.47	-611.10	3187890.31	1287505.64	40.1206420	-104.8281361	0.30	
15902.00	90.800	358.810	7434.53	2759.25	2709.44	-612.64	3187888.77	1287594.62	40.1208863	-104.8281392	0.49	



Actual Wellpath Report

LG EVERIST 07 AWP

Page 6 of 8



REFERENCE WELLPATH IDENTIFICATION				
Operator	PETRO OPERATING CO, LLC		Well	LG EVERIST 07
Field	WELD COUNTY (NAD83/GRID)		API	0512352230
Facility	SEC.30-T02N-R66W		Wellbore	LG EVERIST 07 AWB
Slot	SLOT#07 LG EVERIST 07 (1066'FNL & 1120'FWL,SEC.30)			

WELLPATH DATA (216 stations) † = interpolated, ‡ = extrapolated station												
MD [ft]	Inclination [°]	Azimuth [°]	TVD [ft]	Vert Sect [ft]	North [ft]	East [ft]	Grid East [US ft]	Grid North [US ft]	Latitude	Longitude	DLS [°/100ft]	Comments
15991.00	91.050	359.770	7433.09	2847.84	2798.42	-613.74	3187887.67	1287683.59	40.1211305	-104.8281407	1.11	
16081.00	91.110	0.020	7431.39	2937.33	2888.41	-613.91	3187887.50	1287773.57	40.1213775	-104.8281389	0.29	
16170.00	90.920	0.880	7429.82	3025.74	2977.39	-613.21	3187888.20	1287862.55	40.1216218	-104.8281340	0.99	
16260.00	90.830	359.950	7428.44	3115.14	3067.38	-612.56	3187888.85	1287952.53	40.1218688	-104.8281292	1.04	
16350.00	90.980	358.340	7427.02	3204.75	3157.35	-613.90	3187887.51	1288042.51	40.1221158	-104.8281316	1.80	
16439.00	89.690	358.810	7426.50	3293.45	3246.32	-616.11	3187885.30	1288131.47	40.1223600	-104.8281371	1.54	
16529.00	90.000	359.130	7426.74	3383.10	3336.31	-617.73	3187883.68	1288221.45	40.1226071	-104.8281404	0.50	
16618.00	90.210	358.610	7426.58	3471.76	3425.29	-619.49	3187881.92	1288310.43	40.1228514	-104.8281443	0.63	
16708.00	90.210	359.090	7426.25	3561.42	3515.27	-621.29	3187880.12	1288400.41	40.1230984	-104.8281483	0.53	
16797.00	89.750	358.530	7426.28	3650.09	3604.25	-623.14	3187878.27	1288489.38	40.1233427	-104.8281525	0.81	
16887.00	90.430	359.170	7426.14	3739.76	3694.23	-624.95	3187876.46	1288579.36	40.1235897	-104.8281565	1.04	
16976.00	90.580	359.230	7425.35	3828.37	3783.22	-626.19	3187875.22	1288668.34	40.1238340	-104.8281586	0.18	
17066.00	88.640	358.000	7425.97	3918.06	3873.18	-628.37	3187873.05	1288758.31	40.1240810	-104.8281639	2.55	
17155.00	88.740	357.770	7428.00	4006.82	3962.10	-631.65	3187869.76	1288847.22	40.1243251	-104.8281732	0.28	
17244.00	89.780	357.270	7429.15	4095.63	4051.01	-635.50	3187865.91	1288936.12	40.1245693	-104.8281846	1.30	
17334.00	90.000	358.200	7429.32	4185.43	4140.94	-639.06	3187862.35	1289026.05	40.1248162	-104.8281949	1.06	
17423.00	89.780	0.050	7429.50	4274.05	4229.92	-640.42	3187861.00	1289115.03	40.1250605	-104.8281973	2.09	
17512.00	90.030	1.040	7429.64	4362.45	4318.92	-639.57	3187861.84	1289204.02	40.1253047	-104.8281919	1.15	
17602.00	91.010	0.530	7428.83	4451.80	4408.90	-638.34	3187863.08	1289294.00	40.1255517	-104.8281850	1.23	
17691.00	90.700	0.800	7427.50	4540.16	4497.89	-637.30	3187864.11	1289382.98	40.1257960	-104.8281789	0.46	
17781.00	90.950	1.970	7426.20	4629.38	4587.85	-635.13	3187866.28	1289472.94	40.1260429	-104.8281687	1.33	
17871.00	89.690	1.260	7425.70	4718.56	4677.81	-632.59	3187868.82	1289562.90	40.1262897	-104.8281572	1.61	
17960.00	89.130	1.400	7426.62	4806.81	4766.78	-630.53	3187870.88	1289651.87	40.1265339	-104.8281474	0.65	
18050.00	89.410	1.070	7427.76	4896.06	4856.75	-628.59	3187872.82	1289741.83	40.1267808	-104.8281380	0.48	
18140.00	89.260	0.920	7428.81	4985.37	4946.73	-627.03	3187874.39	1289831.81	40.1270278	-104.8281300	0.24	
18229.00	89.560	1.060	7429.72	5073.68	5035.71	-625.49	3187875.92	1289920.79	40.1272720	-104.8281221	0.37	
18318.00	90.030	0.420	7430.04	5162.04	5124.71	-624.34	3187877.07	1290009.78	40.1275163	-104.8281156	0.89	
18408.00	90.300	1.970	7429.78	5251.31	5214.68	-622.46	3187878.95	1290099.75	40.1277632	-104.8281064	1.75	
18497.00	90.580	0.310	7429.10	5339.59	5303.66	-620.69	3187880.72	1290188.72	40.1280074	-104.8280977	1.89	
18587.00	91.380	1.410	7427.56	5428.91	5393.63	-619.34	3187882.07	1290278.69	40.1282544	-104.8280904	1.51	
18676.00	91.070	0.680	7425.66	5517.20	5482.60	-617.72	3187883.69	1290367.65	40.1284985	-104.8280822	0.89	
18766.00	90.920	359.490	7424.09	5606.66	5572.58	-617.58	3187883.83	1290457.63	40.1287455	-104.8280793	1.33	
18855.00	89.720	359.040	7423.60	5695.27	5661.57	-618.73	3187882.69	1290546.62	40.1289898	-104.8280810	1.44	
18945.00	89.560	0.340	7424.16	5784.80	5751.57	-619.21	3187882.20	1290636.61	40.1292369	-104.8280803	1.46	
18982.00	90.090	1.200	7424.28	5821.53	5788.56	-618.72	3187882.70	1290673.60	40.1293384	-104.8280775	2.73	LAST BH PRODUCTION MWD SURVEY
19008.00	90.090	1.200	7424.23	5847.32	5814.56	-618.17	3187883.24	1290699.60	40.1294098	-104.8280748	0.00	PROJECTION TO BIT (472'FNL & 506'FWL,SEC.19)

HOLE & CASING SECTIONS - Ref Wellbore: LG EVERIST 07 AWB Ref Wellpath: LG EVERIST 07 AWP									
String/Diameter	Start MD [ft]	End MD [ft]	Interval [ft]	Start TVD [ft]	End TVD [ft]	Start N/S [ft]	Start E/W [ft]	End N/S [ft]	End E/W [ft]
9.625in Casing Surface	23.50	1900.42	1876.92	23.50	1873.46	0.00	0.00	-233.18	-33.57



Actual Wellpath Report

LG EVERIST 07 AWP

Page 7 of 8



REFERENCE WELLPATH IDENTIFICATION			
Operator	PETRO OPERATING CO, LLC	Well	LG EVERIST 07
Field	WELD COUNTY (NAD83/GRID)	API	0512352230
Facility	SEC.30-T02N-R66W	Wellbore	LG EVERIST 07 AWB
Slot	SLOT#07 LG EVERIST 07 (1066'FNL & 1120'FWL,SEC.30)		

TARGETS								
Name	TVD [ft]	North [ft]	East [ft]	Grid East [US ft]	Grid North [US ft]	Latitude	Longitude	Shape
SEC.19-T02N-R66W	0.00	-78.28	44.42	3188545.81	1284807.01	40.1132204	-104.8258656	polygon
	2D Polygon: dimensions not calculated							
SEC.19-T02N-R66W 1/2 LINE	0.00	-78.28	44.42	3188545.81	1284807.01	40.1132204	-104.8258656	polygon
	2D Polygon: dimensions not calculated							
SEC.19/30-T02N-R66W (SB 460')	0.00	-78.28	44.42	3188545.81	1284807.01	40.1132204	-104.8258656	polygon
	2D Polygon: dimensions not calculated							
SEC.30-T02N-R66W	0.00	-78.28	44.42	3188545.81	1284807.01	40.1132204	-104.8258656	polygon
	2D Polygon: dimensions not calculated							
SEC.30-T02N-R66W 1/2 LINE	0.00	-78.28	44.42	3188545.81	1284807.01	40.1132204	-104.8258656	polygon
	2D Polygon: dimensions not calculated							
LG EVERIST 07 BHL REV-1(459'FNL & 462'FWL,SEC.19)	7396.00	5828.91	-673.80	3187827.62	1290713.95	40.1294503	-104.8282734	point
LG EVERIST 07 BHL REV-2(459'FNL & 512'FWL,SEC.19)	7427.00	5828.91	-623.80	3187877.61	1290713.95	40.1294493	-104.8280946	point
LG EVERIST 07 LP REV-1(463'FSL & 464'FWL,SEC.30)	7456.00	-3776.85	-618.14	3187883.27	1281108.60	40.1030818	-104.8283345	point
LG EVERIST 07 LP REV-2(463'FSL & 464'FWL,SEC.30)	7467.00	-3776.85	-618.14	3187883.27	1281108.60	40.1030818	-104.8283345	point

WELLPATH COMPOSITION - Ref Wellbore: LG EVERIST 07 AWB Ref Wellpath: LG EVERIST 07 AWP					
Start MD [ft]	End MD [ft]	Positional Uncertainty Model	Log Name/Comment	Wellbore	Survey Date
23.50	141.00	BH MWD - Inclination Only (Standard)	BH MWD - Inclination Only 13-1/2" <141>	LG EVERIST 07 AWB	11/14/2023
141.00	1862.00	OWSG MWD rev2 + IFR1 + Sag + Multi-Station Correction	OWSG MWD rev2+IFR1+MS+SAG 13-1/2" <236 - 1862>	LG EVERIST 07 AWB	11/14/2023
1862.00	19008.00	OWSG MWD rev2 + IFR1 + Sag + Multi-Station Correction	OWSG MWD rev2+IFR1+MS+SAG 8-1/2" <1990 - 18982>	LG EVERIST 07 AWB	12/7/2023



Actual Wellpath Report

LG EVERIST 07 AWP

Page 8 of 8



REFERENCE WELLPATH IDENTIFICATION			
Operator	PETRO OPERATING CO, LLC	Well	LG EVERIST 07
Field	WELD COUNTY (NAD83/GRID)	API	0512352230
Facility	SEC.30-T02N-R66W	Wellbore	LG EVERIST 07 AWB
Slot	SLOT#07 LG EVERIST 07 (1066'FNL & 1120'FWL,SEC.30)		

WELLPATH COMMENTS				
MD [ft]	Inclination [°]	Azimuth [°]	TVD [ft]	Comment
141.00	0.000	N/A	141.00	FIRST BH SURFACE MWD SURVEY
1862.00	14.010	184.770	1836.12	LAST BH SURFACE MWD SURVEY
1990.00	11.520	185.840	1960.95	FIRST BH PRODUCTION MWD SURVEY
9408.00	88.810	0.625	7466.40	CROSS SETBACK HEEL (460'FSL & 490'FWL,SEC.30)
18982.00	90.090	1.200	7424.28	LAST BH PRODUCTION MWD SURVEY
19008.00	90.090	1.200	7424.23	PROJECTION TO BIT (472'FNL & 506'FWL,SEC.19)