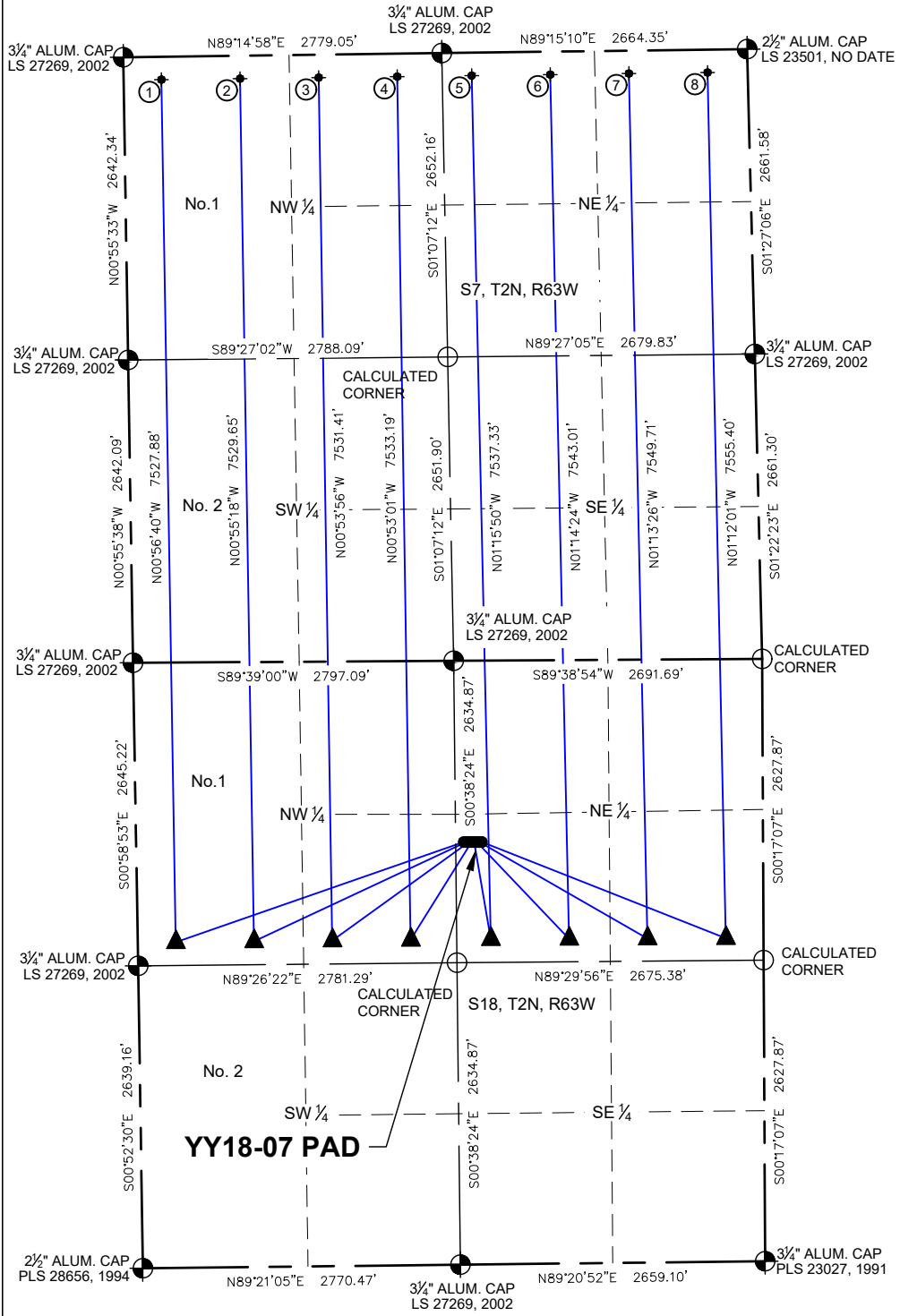
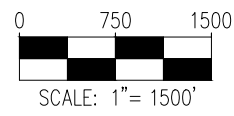
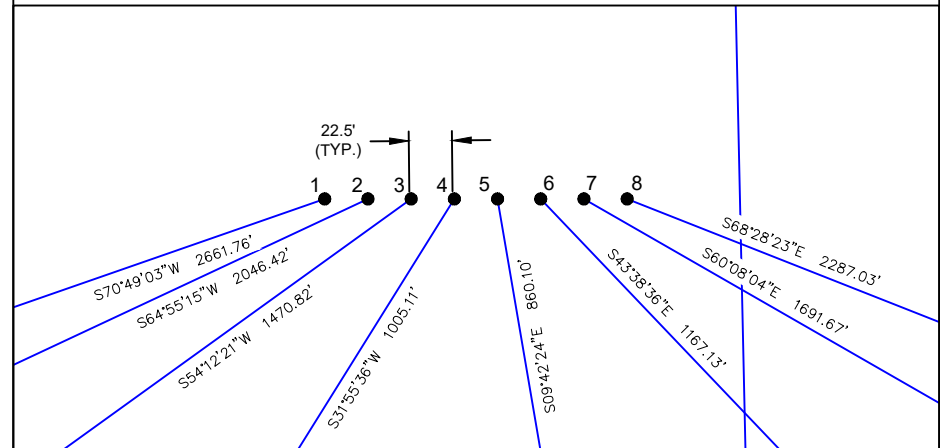


# YY18-07 PAD MULTI-WELL LOCATION PLAT T2N R63W SECTION 18



## PROPOSED WELLBORE DIRECTION DATA YY18-07 PAD SLOTS 1-8



### LEGEND

- = FOUND MONUMENT
- = PROPOSED WELL
- = CALCULATED POSITION
- = BOTTOM HOLE
- = TOP OF PRODUCTION ZONE

### NOTES:

- 1) ALL BEARINGS ARE GRID BEARINGS OF THE COLORADO STATE PLANE COORDINATE SYSTEM, NORTH ZONE, NORTH AMERICAN DATUM 1983/2011. THE LINEAL DIMENSIONS AS SHOWN HEREIN ARE GRID DISTANCES BASED UPON THE "U.S. SURVEY FOOT." TO GET GROUND DISTANCES MULTIPLY SHOWN DISTANCE BY 1.00027289.
- 2) DISTANCES ARE MEASURED AT 90° FROM SECTION LINE OF THE SIXTH PRINCIPAL MERIDIAN, COUNTY OF WELD, STATE OF COLORADO.
- 3) GROUND ELEVATIONS ARE BASED ON AN OBSERVED GPS ELEVATION (NAVD 1988 DATUM).
- 4) SURFACE USE: "RANGELAND"
- 5) INSTRUMENT OPERATOR: LOGAN THIELBERT
- 6) THIS MAP DOES NOT REPRESENT A BOUNDARY SURVEY.

**DISCLAIMER:**  
THIS PLAT DOES NOT REPRESENT A MONUMENTED LAND SURVEY AND SHOULD NOT BE RELIED UPON TO DETERMINE BOUNDARY LINES, PROPERTY OWNERSHIP OR OTHER PROPERTY INTERESTS. PARCEL LINES, IF DEPICTED HAVE NOT BEEN FIELD VERIFIED AND MAY BE BASED UPON PUBLICLY AVAILABLE DATA THAT ALSO HAS NOT BEEN INDEPENDENTLY VERIFIED.

SURFACE HOLE LOCATION									TOP OF PRODUCTION ZONE		BOTTOM HOLE LOCATION	
SLOT	WELL NAME	LATITUDE	LONGITUDE	FOOTAGE		QTR-QTR	ELEV.	PDOP	FOOTAGE		FOOTAGE	
1	GUTTERSEN YY18-785	40.141256°N	104.480165°W	1582' FNL	2611' FEL	SWNE	4898'	1.2	2441' FNL	330' FWL	200' FNL	330' FWL
2	GUTTERSEN YY18-775	40.141255°N	104.480085°W	1582' FNL	2588' FEL	SWNE	4897'	1.2	2438' FNL	1013' FWL	200' FNL	1016' FWL
3	GUTTERSEN YY18-764	40.141254°N	104.480004°W	1582' FNL	2566' FEL	SWNE	4897'	1.2	2435' FNL	1696' FWL	200' FNL	1702' FWL
4	GUTTERSEN YY18-754	40.141253°N	104.479924°W	1582' FNL	2543' FEL	SWNE	4897'	1.2	2432' FNL	2380' FWL	200' FNL	2388' FWL
5	GUTTERSEN YY18-746	40.141253°N	104.479843°W	1582' FNL	2521' FEL	SWNE	4897'	1.2	2431' FNL	2380' FEL	200' FNL	2408' FEL
6	GUTTERSEN YY18-736	40.141252°N	104.479763°W	1582' FNL	2498' FEL	SWNE	4897'	1.2	2432' FNL	1697' FEL	200' FNL	1722' FEL
7	GUTTERSEN YY18-726	40.141251°N	104.479682°W	1583' FNL	2476' FEL	SWNE	4896'	1.2	2434' FNL	1013' FEL	200' FNL	1036' FEL
8	GUTTERSEN YY18-715	40.141251°N	104.479602°W	1583' FNL	2453' FEL	SWNE	4896'	1.2	2435' FNL	330' FEL	200' FNL	350' FEL



FIELD DATE: 10-10-23  
DRAWING DATE: 2-08-24  
DRAWN BY: GLP  
CHECKED BY: TRP

**SURFACE LOCATION:**  
SEC. 18, T2N, R63W, 6TH P.M.  
WELD COUNTY, COLORADO

PUBLICLY AVAILABLE DATA SOURCES HAVE NOT BEEN INDEPENDENTLY VERIFIED BY ASCENT.

