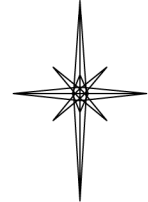


R. 93 W.

N



GRID NORTH
SCALE' 1" = 1000'
0 1000'

T. 9 S.

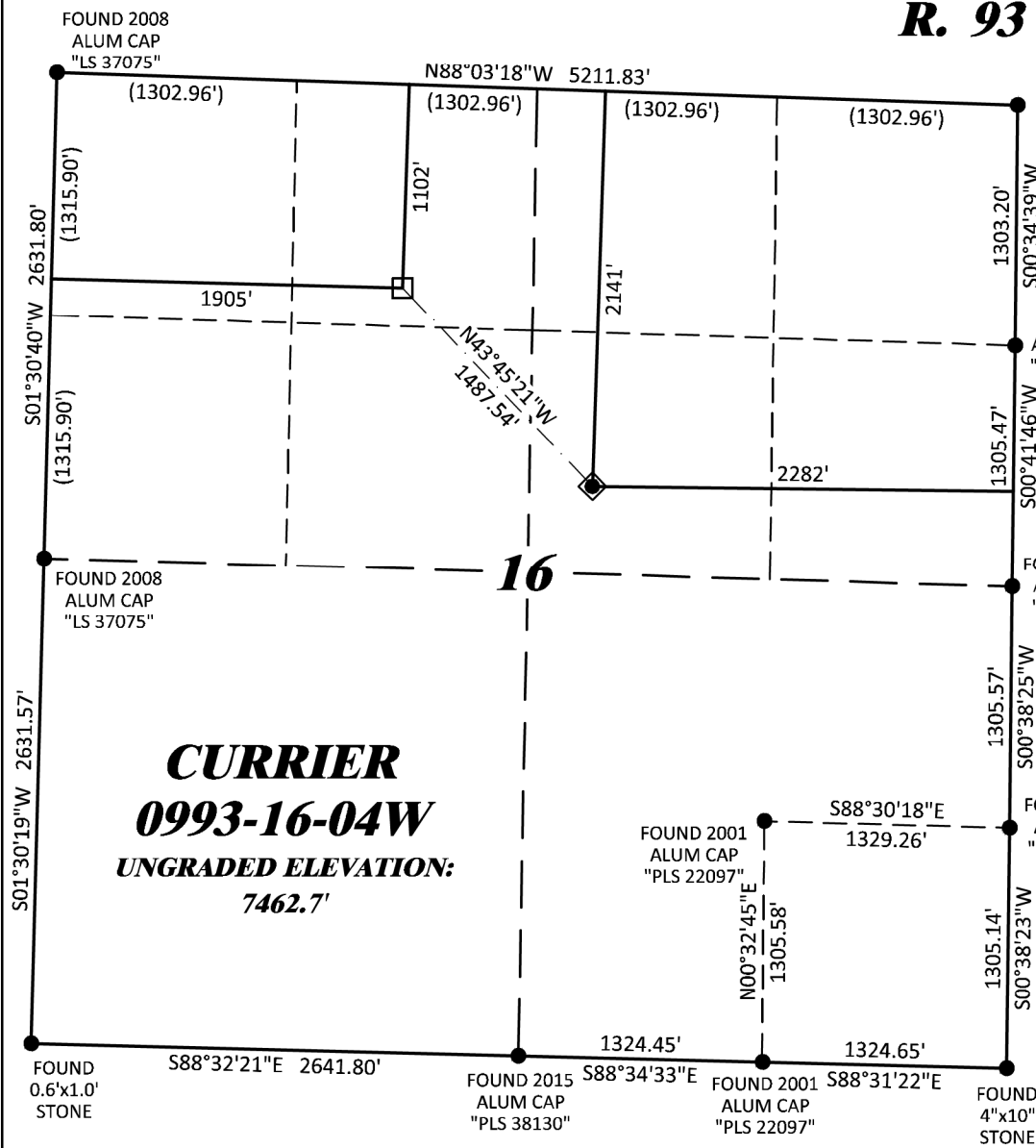
SHL

LATITUDE (NAD 83)
NORTH 39.278107 DEG.
LONGITUDE (NAD 83)
WEST 107.773310 DEG.
NORTHING (NAD 83)
1534234.90
EASTING (NAD 83)
2356552.13

BHL/TPZ
LATITUDE (NAD 83)
NORTH 39.280985 DEG.
LONGITUDE (NAD 83)
WEST 107.777038 DEG.
NORTHING (NAD 83)
1535309
EASTING (NAD 83)
2355523

BASIS OF BEARING/DATUM
SPCS CO CENTRAL ZONE NAD 27 BASED
ON GPS STATIC OBSERVATIONS AND
OPUS SOLUTION ON DRG CONTROL
POINT "CP 16-9-93" HAVING A
POSITION OF:
NAD83(2011)
LAT 39° 16' 16.64" NORTH
LONG 107° 46' 11.24" WEST
NAVD88 ELEVATION: 7245.29

THE SOUTH LINE OF THE SW¼ OF
SECTION 16, MONUMENTED AS
SHOWN AND BEARING S 88°32'21" E.



CURRIER
0993-16-04W
UNGRADED ELEVATION:
7462.7'

16

NOTES

- 1. GPS OPERATOR T. SHERRILL OBSERVED A PDOF OF 1.2.
- 2. ALL GPS OBSERVATIONS ARE IN COMPLIANCE WITH COGCC RULE No.215.
- 3. EXISTING IMPROVEMENTS WITHIN 2000' OF LOCATION. SEE LOC. DRAWING.
- 4. SURROUNDING SURFACE USE IS NATIVE BRUSH, NON CROP RANGELAND.

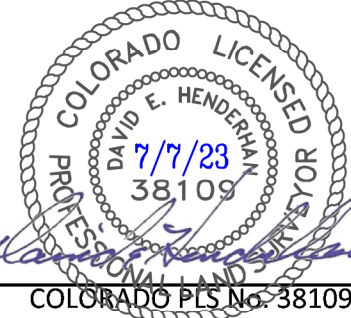
SURVEYOR'S STATEMENT

I, DAVID E. HENDERHAN, AN EMPLOYEE AND AGENT ON BEHALF OF D.R. GRIFFIN & ASSOCIATES, INC. STATE THE PLAT HEREON IS A CORRECT REPRESENTATION OF A SURVEY MADE UNDER MY SUPERVISION ON THE 1st DAY OF MAY, 2023 OF THE SHOWN CURRIER 0993-16-04W AND THAT THE LOCATION HAS BEEN STAKED ON THE GROUND AS SHOWN ON THIS PLAT.

Notice: In accordance with Colorado State Law, any legal action based upon any defect in this survey plat must commence within three (3) years after first discovery of such defect. In no event, may any action based upon any defect in this survey plat be commenced more than ten (10) years from the date of certification shown hereon.

LEGEND

- ◆ WELL LOCATION
- APPROX. BHL/TPZ
- FOUND MONUMENT



CURRIER BCU 0993-16-07 PAD

COLORADO PLS No. 38109



PLAT OF DRILLING LOCATION IN
SWNE, SECTION 16, FOR
LARAMIE ENERGY, LLC
2141' F/NL, & 2282' F/EL, SECTION 16,
T. 9 S., R. 93 W., 6TH P.M.,
MESA COUNTY, COLORADO

DRAWN: 7/5/2023 - DEH	SCALE: 1" = 1000'
REVISED: N/A	DRG JOB No. 22254
	A21-16-04W