

Project: Mesa County, CO
 Site: Currier 0993-16-07 Pad
 Well: Currier 0993-16-01W
 Wellbore: OH
 Design: Design #1
 Latitude: 39.278122
 Longitude: -107.773290
 Ground Level: 7457.0
 RKB=30' @ 7487.0usft (TBD)

PROJECT DETAILS: Mesa County, CO

Geodetic System: US State Plane 1983
 Datum: North American Datum 1983
 Ellipsoid: GRS 1980
 Zone: Colorado Central Zone
 System Datum: Mean Sea Level

REFERENCE INFORMATION

Vertical (TVD) Reference: RKB=30' @ 7487.0usft (TBD)
 Section (VS) Reference: Slot - A-22(0.0N, 0.0E)
 Measured Depth Reference: RKB=30' @ 7487.0usft (TBD)
 Calculation Method: Minimum Curvature

SECTION DETAILS

MD	Inc	Azi	TVD	+N-S	+E-W	Dleg	TFace	Vsect	Annotation
0.0	0.00	0.00	0.0	0.0	0.0	0.00	0.00	0.0	
225.0	0.00	0.00	225.0	0.0	0.0	0.00	0.00	0.0	KOP (Build 2.5' / 100)
1265.9	26.02	331.93	1230.4	205.0	-109.3	2.50	331.93	232.3	EOB @ 26.02° Inc. / 331.93° Azm
5395.6	26.02	331.93	4941.6	1803.7	-961.8	0.00	0.00	2044.1	Drop 2.5' / 100'
6436.5	0.00	0.00	5947.0	2008.7	-1071.1	2.50	180.00	2276.4	EOD @ Vertical
9047.5	0.00	0.00	8558.0	2008.7	-1071.1	0.00	0.00	2276.4	TD @ 9047.5' MD / 8558.0' TVD

FORMATION TOP DETAILS

TVDPath	MDPath	Formation
2756.0	2963.5	Wasatch 'G' Sand
3205.0	3463.2	Fort Union
4182.0	4550.4	Lower Wasatch
4908.0	5358.3	Ohio Creek
5114.0	5583.9	Williams Fork
5947.0	6436.5	TOG
7161.0	7650.5	Cameo
7637.0	8126.5	Rollins
8174.0	8663.5	Cozzette
8348.0	8837.5	Corcoran

Azimuths to True North
 Magnetic North: 8.68°

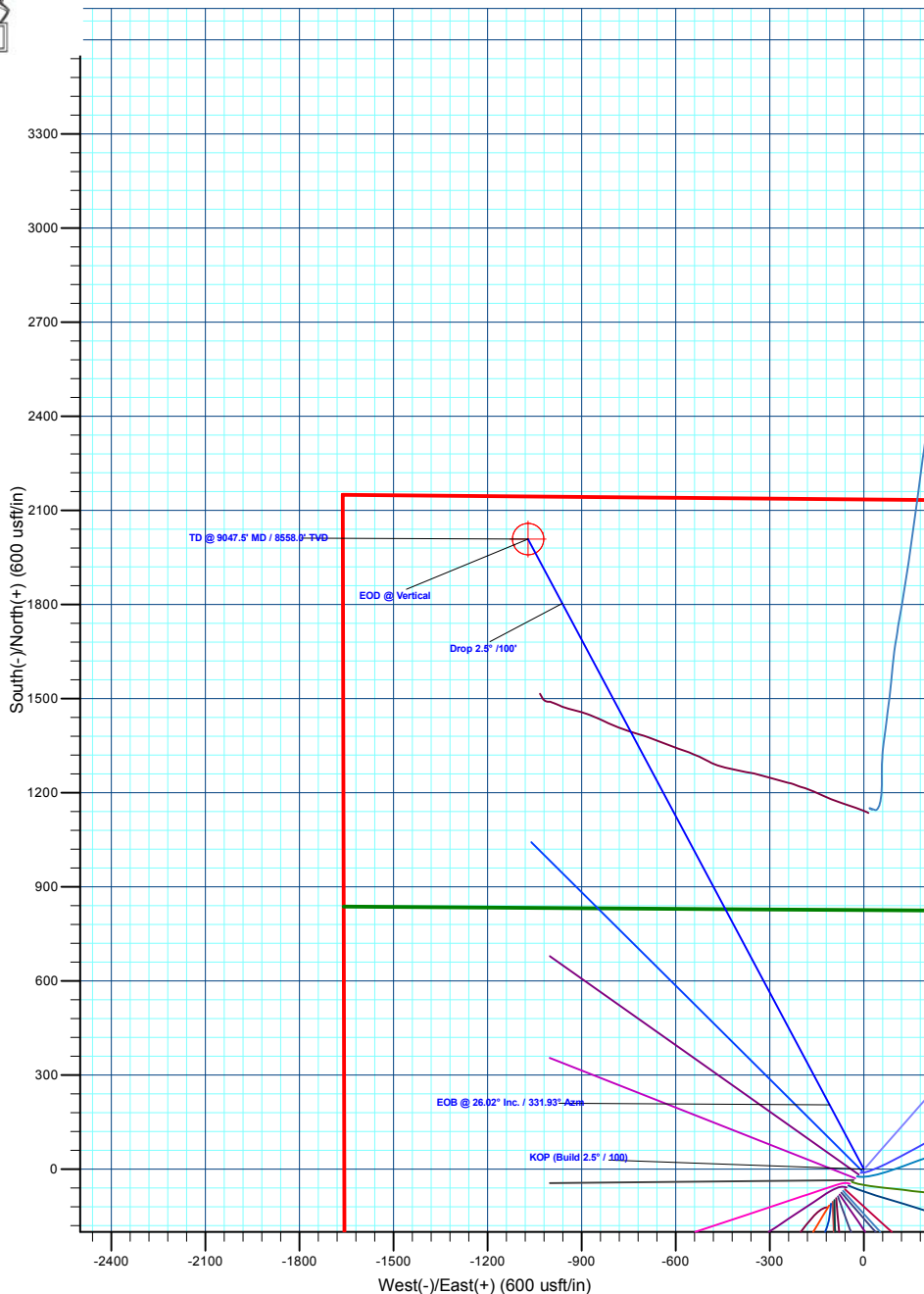
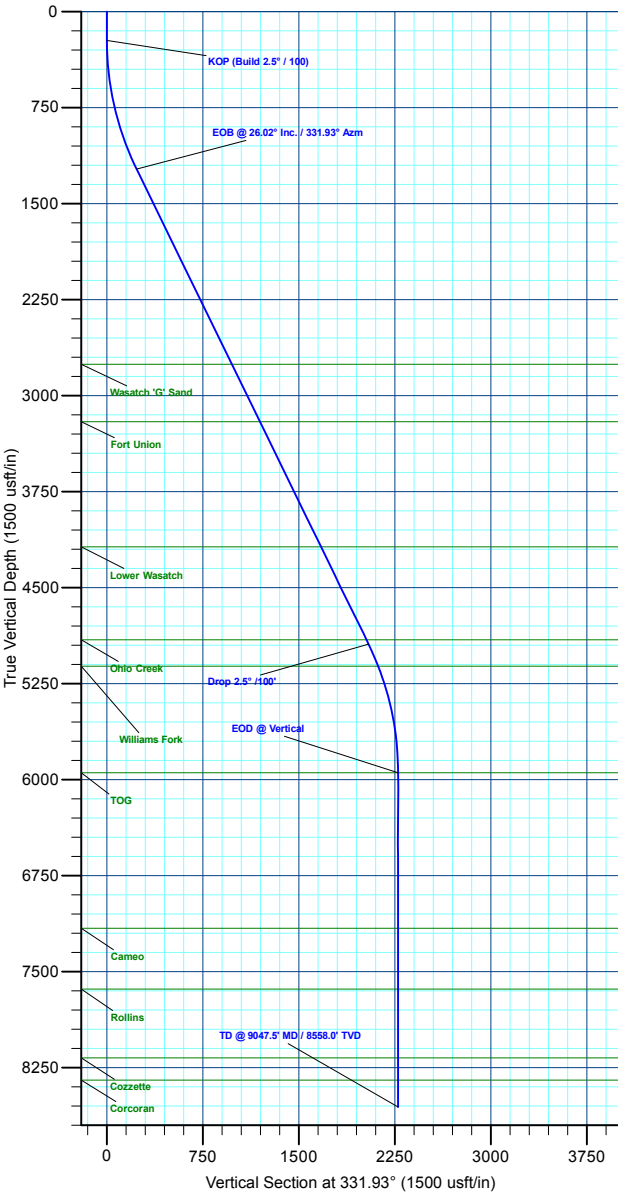
Magnetic Field
 Strength: 50856.3nT
 Dip Angle: 65.13°
 Date: 7/13/2023
 Model: HDGM2023

DESIGN TARGET DETAILS

Name	TVD	+N-S	+E-W	Northing	Easting	Latitude	Longitude
PBHL - Currier 16-0858.0	2008.0	2008.7	-1071.1	1536275.23	2355537.37	39.283637	-107.777074

WELL DETAILS: Currier 0993-16-01W

+N-S	+E-W	Ground Level : Northing	Easting	Latitude	Longitude	
0.0	0.0	1534240.36	235657.85	39.278122	-107.773290	A-22



Plan: Design #1 (Currier 0993-16-01W/OH)

Created By: Will Jircik Date: 0:51, July 14 2023