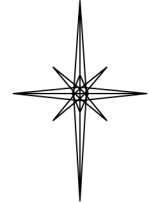


R. 93 W.

N



GRID NORTH
SCALE' 1" = 1000'

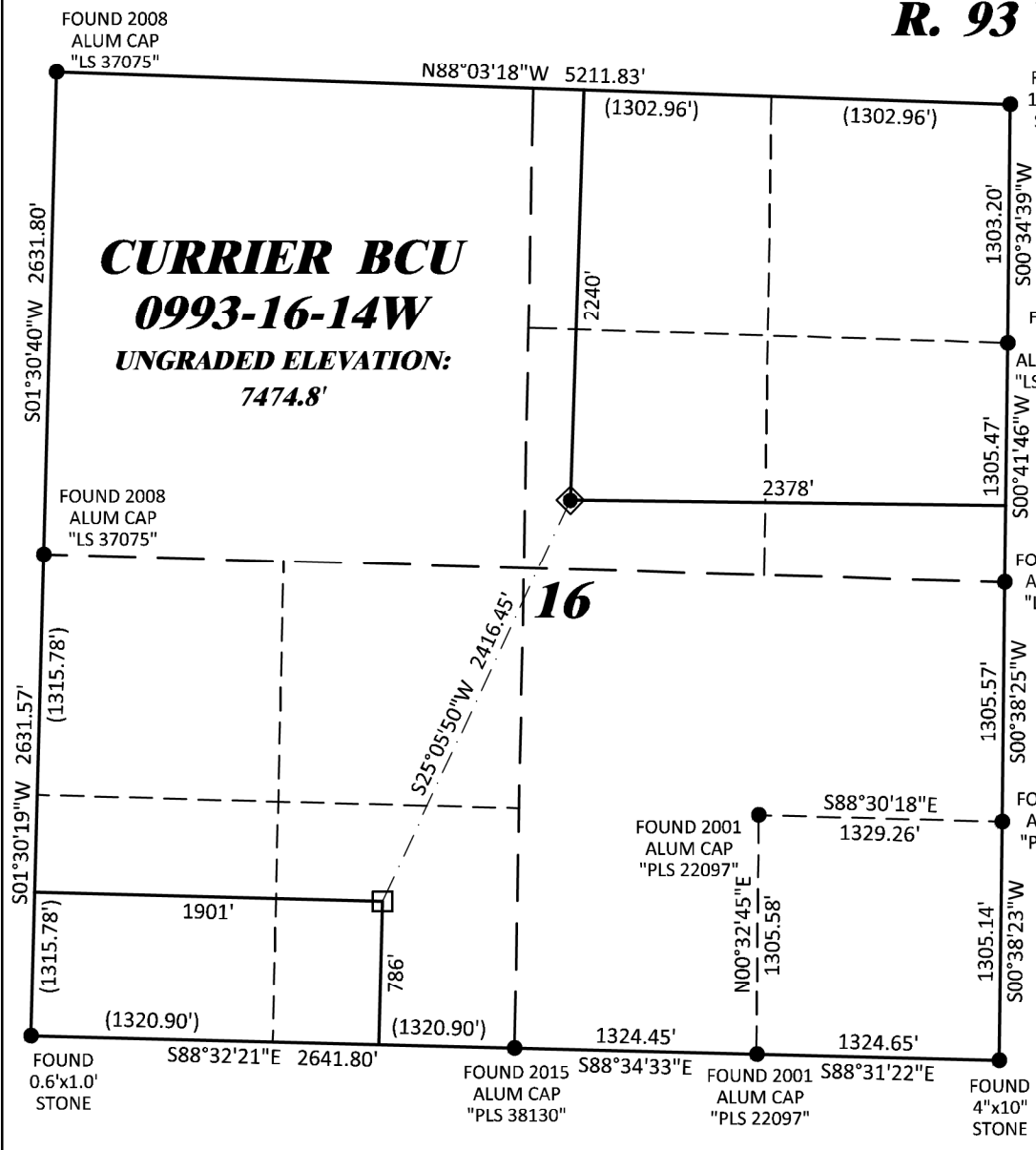
T. 9 S.

SHL
LATITUDE (NAD 83)
NORTH 39.277837 DEG.
LONGITUDE (NAD 83)
WEST 107.773642 DEG.
NORTHING (NAD 83)
1534139.07
EASTING (NAD 83)
2356455.62

BHL/TPZ
LATITUDE (NAD 83)
NORTH 39.271760 DEG.
LONGITUDE (NAD 83)
WEST 107.777068 DEG.
NORTHING (NAD 83)
1531951
EASTING (NAD 83)
2355431

BASIS OF BEARING/DATUM
SPCS CO CENTRAL ZONE NAD 27 BASED
ON GPS STATIC OBSERVATIONS AND
OPUS SOLUTION ON DRG CONTROL
POINT "CP 16-9-93" HAVING A
POSITION OF:
NAD83(2011)
LAT 39° 16' 16.64" NORTH
LONG 107° 46' 11.24" WEST
NAVD88 ELEVATION: 7245.29

THE SOUTH LINE OF THE SW¼ OF
SECTION 16, MONUMENTED AS
SHOWN AND BEARING S 88°32'21" E.



NOTES

- 1. GPS OPERATOR T. SHERRILL OBSERVED A PDOF OF 1.6.
- 2. ALL GPS OBSERVATIONS ARE IN COMPLIANCE WITH COGCC RULE No.215.
- 3. EXISTING IMPROVEMENTS WITHIN 2000' OF LOCATION. SEE LOC. DRAWING.
- 4. SURROUNDING SURFACE USE IS NATIVE BRUSH, NON CROP RANGELAND.

SURVEYOR'S STATEMENT

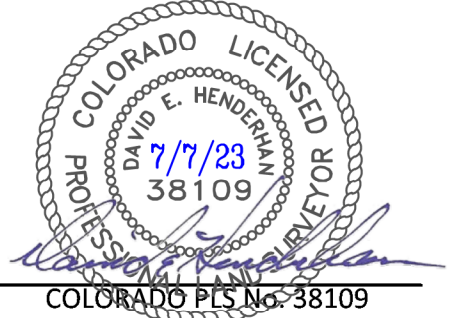
I, DAVID E. HENDERHAN, AN EMPLOYEE AND AGENT ON BEHALF OF D.R. GRIFFIN & ASSOCIATES, INC. STATE THE PLAT HEREON IS A CORRECT REPRESENTATION OF A SURVEY MADE UNDER MY SUPERVISION ON THE 1st DAY OF MAY, 2023 OF THE SHOWN CURRIER BCU 0993-16-14W AND THAT THE LOCATION HAS BEEN STAKED ON THE GROUND AS SHOWN ON THIS PLAT.

Notice: In accordance with Colorado State Law, any legal action based upon any defect in this survey plat must commence within three (3) years after first discovery of such defect. In no event, may any action based upon any defect in this survey plat be commenced more than ten (10) years from the date of certification shown hereon.

LEGEND

- ◆ WELL LOCATION
- APPROX. BHL/TPZ
- FOUND MONUMENT

CURRIER BCU 0993-16-07 PAD



DRG RIFFIN & ASSOCIATES, INC.
(307) 362-5028 1414 ELK ST., ROCK SPRINGS, WY 82901

**PLAT OF DRILLING LOCATION IN
SWNE, SECTION 16, FOR
LARAMIE ENERGY, LLC
2240' F/NL, & 2378' F/EL, SECTION 16,
T. 9 S., R. 93 W., 6TH P.M.,
MESA COUNTY, COLORADO**

DRAWN: 7/5/2023 - DEH	SCALE: 1" = 1000'
REVISED: N/A	DRG JOB No. 22254
	A4-16-14W