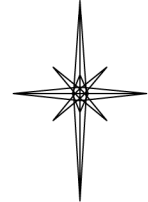


R. 93 W.

N



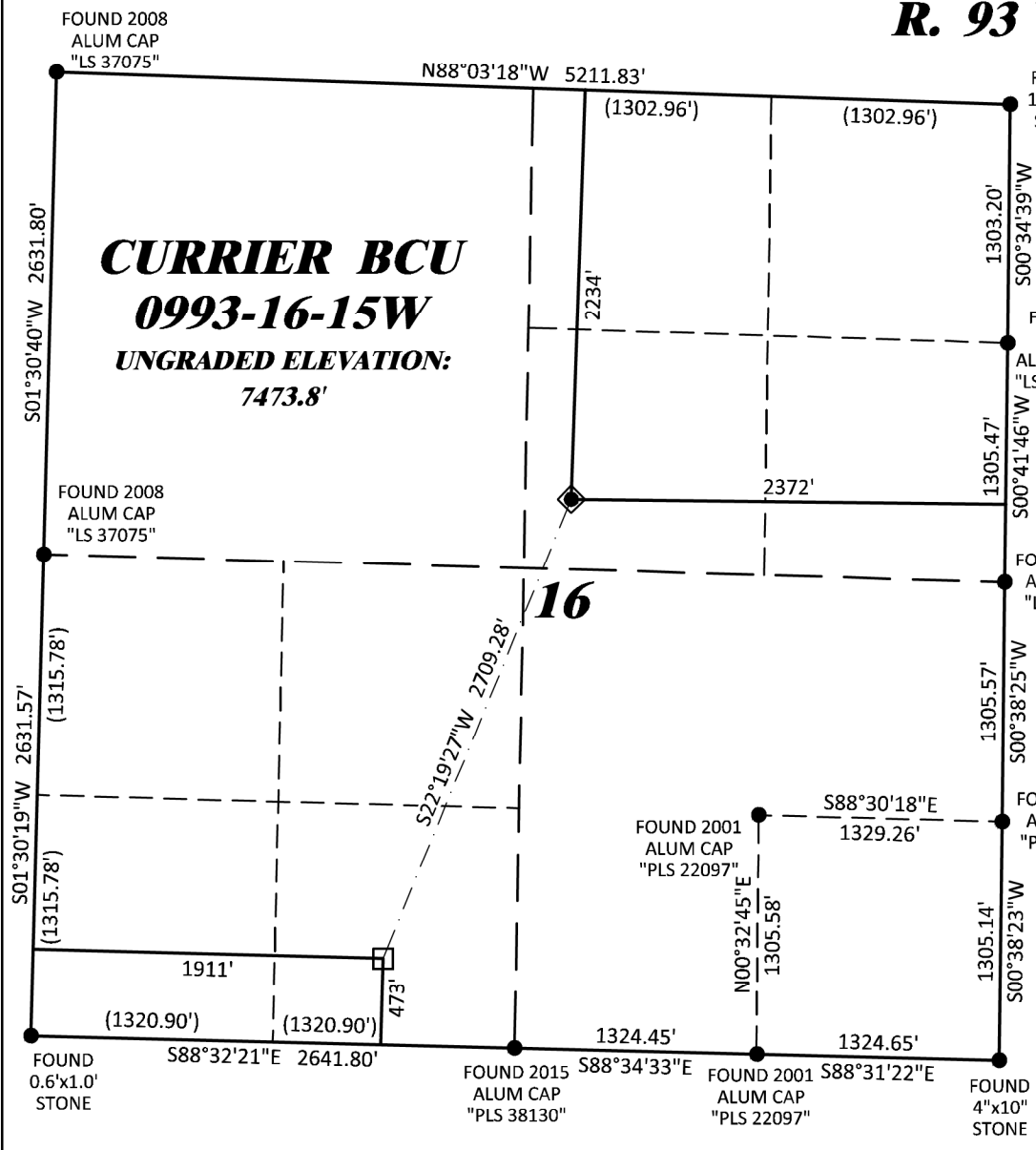
GRID NORTH  
SCALE' 1" = 1000'  
0 1000'

T. 9 S.

SHL  
LATITUDE (NAD 83)  
NORTH 39.277853 DEG.  
LONGITUDE (NAD 83)  
WEST 107.773623 DEG.  
NORTHING (NAD 83)  
1534144.71  
EASTING (NAD 83)  
2356461.30

BHL/TPZ  
LATITUDE (NAD 83)  
NORTH 39.270903 DEG.  
LONGITUDE (NAD 83)  
WEST 107.777035 DEG.  
NORTHING (NAD 83)  
1531638  
EASTING (NAD 83)  
2355432

**BASIS OF BEARING/DATUM**  
SPCS CO CENTRAL ZONE NAD 27 BASED  
ON GPS STATIC OBSERVATIONS AND  
OPUS SOLUTION ON DRG CONTROL  
POINT "CP 16-9-93" HAVING A  
POSITION OF:  
NAD83(2011)  
LAT 39° 16' 16.64" NORTH  
LONG 107° 46' 11.24" WEST  
NAVD88 ELEVATION: 7245.29  
  
THE SOUTH LINE OF THE SW¼ OF  
SECTION 16, MONUMENTED AS  
SHOWN AND BEARING S 88°32'21" E.



**NOTES**

- 1. GPS OPERATOR T. SHERRILL OBSERVED A PDOF OF 1.6.
- 2. ALL GPS OBSERVATIONS ARE IN COMPLIANCE WITH COGCC RULE No.215.
- 3. EXISTING IMPROVEMENTS WITHIN 2000' OF LOCATION. SEE LOC. DRAWING.
- 4. SURROUNDING SURFACE USE IS NATIVE BRUSH, NON CROP RANGELAND.

**SURVEYOR'S STATEMENT**

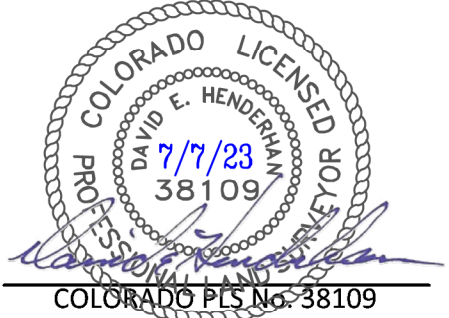
I, DAVID E. HENDERHAN, AN EMPLOYEE AND AGENT ON BEHALF OF D.R. GRIFFIN & ASSOCIATES, INC. STATE THE PLAT HEREON IS A CORRECT REPRESENTATION OF A SURVEY MADE UNDER MY SUPERVISION ON THE 1st DAY OF MAY, 2023 OF THE SHOWN CURRIER BCU 0993-16-15W AND THAT THE LOCATION HAS BEEN STAKED ON THE GROUND AS SHOWN ON THIS PLAT.

Notice: In accordance with Colorado State Law, any legal action based upon any defect in this survey plat must commence within three (3) years after first discovery of such defect. In no event, may any action based upon any defect in this survey plat be commenced more than ten (10) years from the date of certification shown hereon.

**LEGEND**

- ◆ WELL LOCATION
- APPROX. BHL/TPZ
- FOUND MONUMENT

CURRIER BCU 0993-16-07 PAD



**DRG** RIFFIN & ASSOCIATES, INC.  
(307) 362-5028 1414 ELK ST., ROCK SPRINGS, WY 82901

**PLAT OF DRILLING LOCATION IN  
SWNE, SECTION 16, FOR  
LARAMIE ENERGY, LLC**

DRAWN: 7/5/2023 - DEH	SCALE: 1" = 1000'
REVISED: N/A	DRG JOB No. 22254
	A5-16-15W

2234' F/NL, & 2372' F/EL, SECTION 16,  
T. 9 S., R. 93 W., 6TH P.M.,  
MESA COUNTY, COLORADO