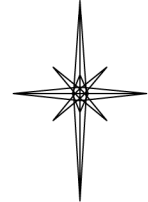


R. 93 W.

N



GRID NORTH
SCALE' 1" = 1000'
500' 0 1000'

T. 9 S.

SHL

LATITUDE (NAD 83)
NORTH 39.277996 DEG.
LONGITUDE (NAD 83)
WEST 107.773447 DEG.
NORTHING (NAD 83)
1534195.44
EASTING (NAD 83)
2356512.39

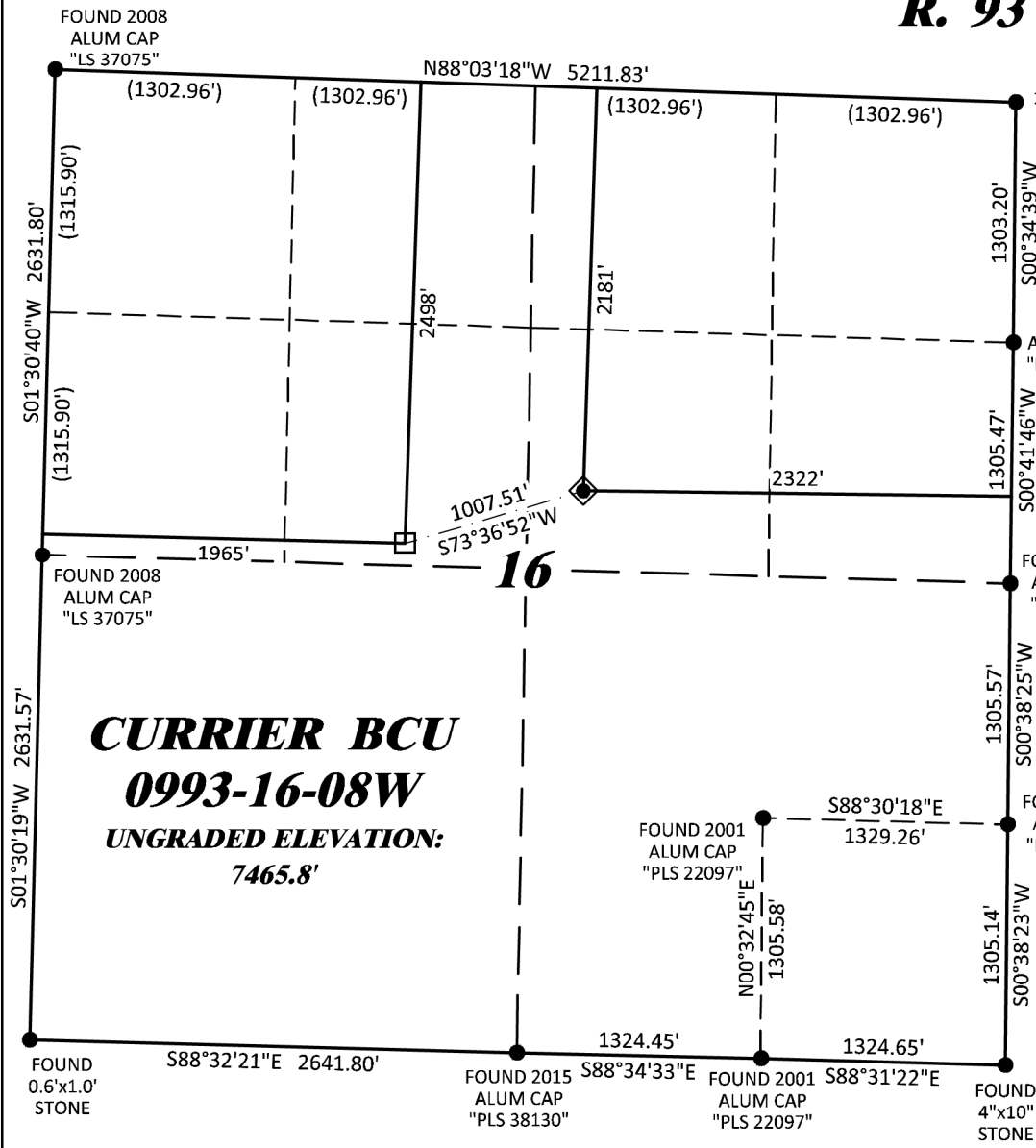
BHL/TPZ

LATITUDE (NAD 83)
NORTH 39.277149 DEG.
LONGITUDE (NAD 83)
WEST 107.776835 DEG.
NORTHING (NAD 83)
1533911
EASTING (NAD 83)
2355546

BASIS OF BEARING/DATUM

SPCS CO CENTRAL ZONE NAD 27 BASED ON GPS STATIC OBSERVATIONS AND OPUS SOLUTION ON DRG CONTROL POINT "CP 16-9-93" HAVING A POSITION OF:
NAD83(2011)
LAT 39° 16' 16.64" NORTH
LONG 107° 46' 11.24" WEST
NAVD88 ELEVATION: 7245.29

THE SOUTH LINE OF THE SW¼ OF SECTION 16, MONUMENTED AS SHOWN AND BEARING S 88°32'21" E.



CURRIER BCU
0993-16-08W
UNGRADED ELEVATION:
7465.8'

16

NOTES

- 1. GPS OPERATOR T. SHERRILL OBSERVED A PDOF OF 1.5.
- 2. ALL GPS OBSERVATIONS ARE IN COMPLIANCE WITH COGCC RULE No.215.
- 3. EXISTING IMPROVEMENTS WITHIN 2000' OF LOCATION. SEE LOC. DRAWING.
- 4. SURROUNDING SURFACE USE IS NATIVE BRUSH, NON CROP RANGELAND.

LEGEND

- ◆ WELL LOCATION
- APPROX. BHL/TPZ
- FOUND MONUMENT

SURVEYOR'S STATEMENT

I, DAVID E. HENDERHAN, AN EMPLOYEE AND AGENT ON BEHALF OF D.R. GRIFFIN & ASSOCIATES, INC. STATE THE PLAT HEREON IS A CORRECT REPRESENTATION OF A SURVEY MADE UNDER MY SUPERVISION ON THE 1st DAY OF MAY, 2023 OF THE SHOWN CURRIER BCU 0993-16-08W AND THAT THE LOCATION HAS BEEN STAKED ON THE GROUND AS SHOWN ON THIS PLAT.

Notice: In accordance with Colorado State Law, any legal action based upon any defect in this survey plat must commence within three (3) years after first discovery of such defect. In no event, may any action based upon any defect in this survey plat be commenced more than ten (10) years from the date of certification shown hereon.



CURRIER BCU 0993-16-07 PAD

COLORADO PLS No. 38109



PLAT OF DRILLING LOCATION IN SWNE, SECTION 16, FOR LARAMIE ENERGY, LLC

DRAWN: 7/5/2023 - DEH	SCALE: 1" = 1000'
REVISED: N/A	DRG JOB No. 22254
	A14-16-08W

2181' F/NL, & 2322' F/EL, SECTION 16, T. 9 S., R. 93 W., 6TH P.M., MESA COUNTY, COLORADO