

Interim Reclamation and Stormwater Inspection

Date: 2/7/24

Operator: Noble Energy Inc. - 100322

Location ID: 437468

Inspection Document #: 713900350

Weld County, CO

Logan Hansen
Reclamation Specialist, ECMC



COLORADO
Energy & Carbon Management
Commission
Department of Natural Resources

Inspection Photos

Location Name: Heartland State G36-75-1HN

MLTI

Location ID: 437468



Photo 1. The photo was taken at the location entrance facing Northwest. The photo illustrates the location operator signs.



Photo 2. The photo was taken at the tank battery location facing Northeast. The photo illustrates cattle guards being stored on location.

Inspection Photos

Location Name: Heartland State G36-75-1HN

MLTI

Location ID: 437468



Photo 3. The photo was taken at the Northwest corner of the tank battery location facing Northeast. The photo illustrates some rilling along the working pad into the interim reclaim areas due to the filter wattle not being properly installed. Stakes were not driven all the way into the soil below.



Photo 4. The photo was taken at the tank battery location facing South. The photo illustrates the boundary of the working pad surface and illustrates how the interim is dominated by Cereal rye and Russian thistle.

Inspection Photos

Location Name: Heartland State G36-75-1HN

MLTI

Location ID: 437468



Photo 5. The photo was taken at the Eastern wellhead group facing Southwest. The photo illustrates the working pad for the group of 5 wellheads.



Photo 6. The photo was taken at the Western wellhead group facing East. The photo illustrates the working pad for the group of 4 wellheads.

Inspection Photos

Location Name: Heartland State G36-75-1HN

MLTI

Location ID: 437468



Photo 7. The photo was taken at the tank battery entrance facing South. The photo illustrates subsidence at the entrance.

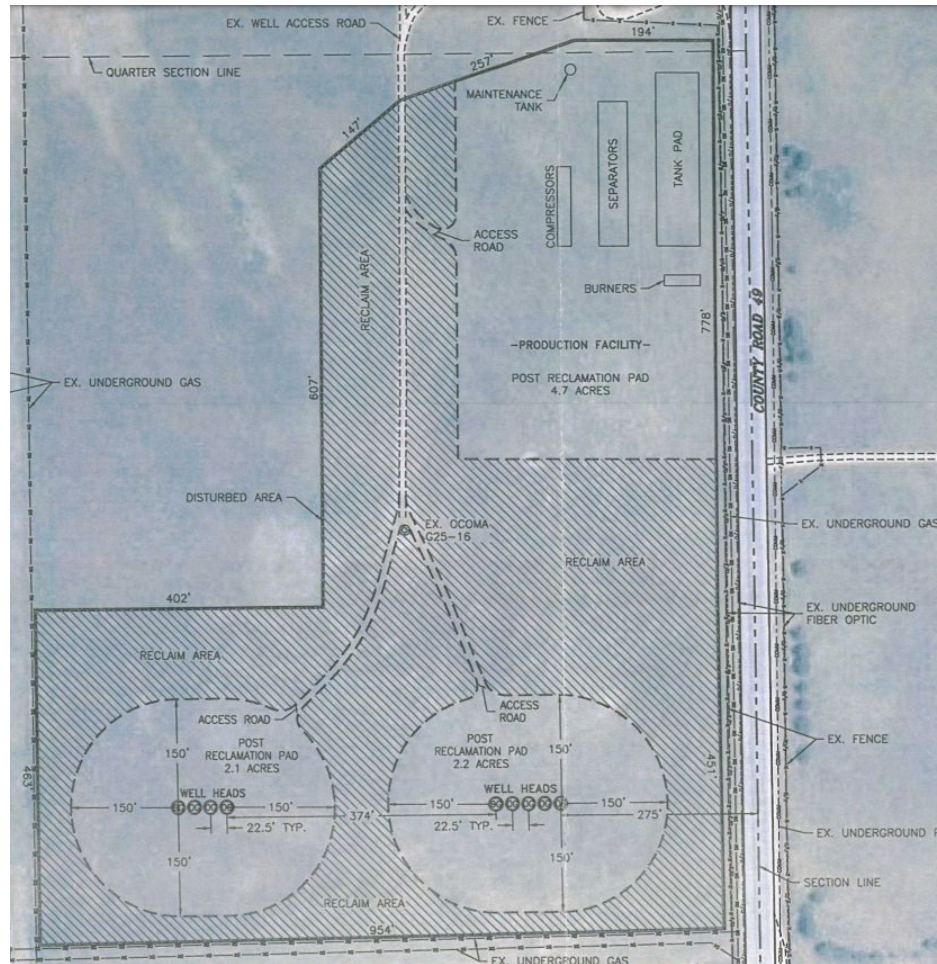


Photo 8. The photo was used from Doc. #400591390 to show the original location drawings.

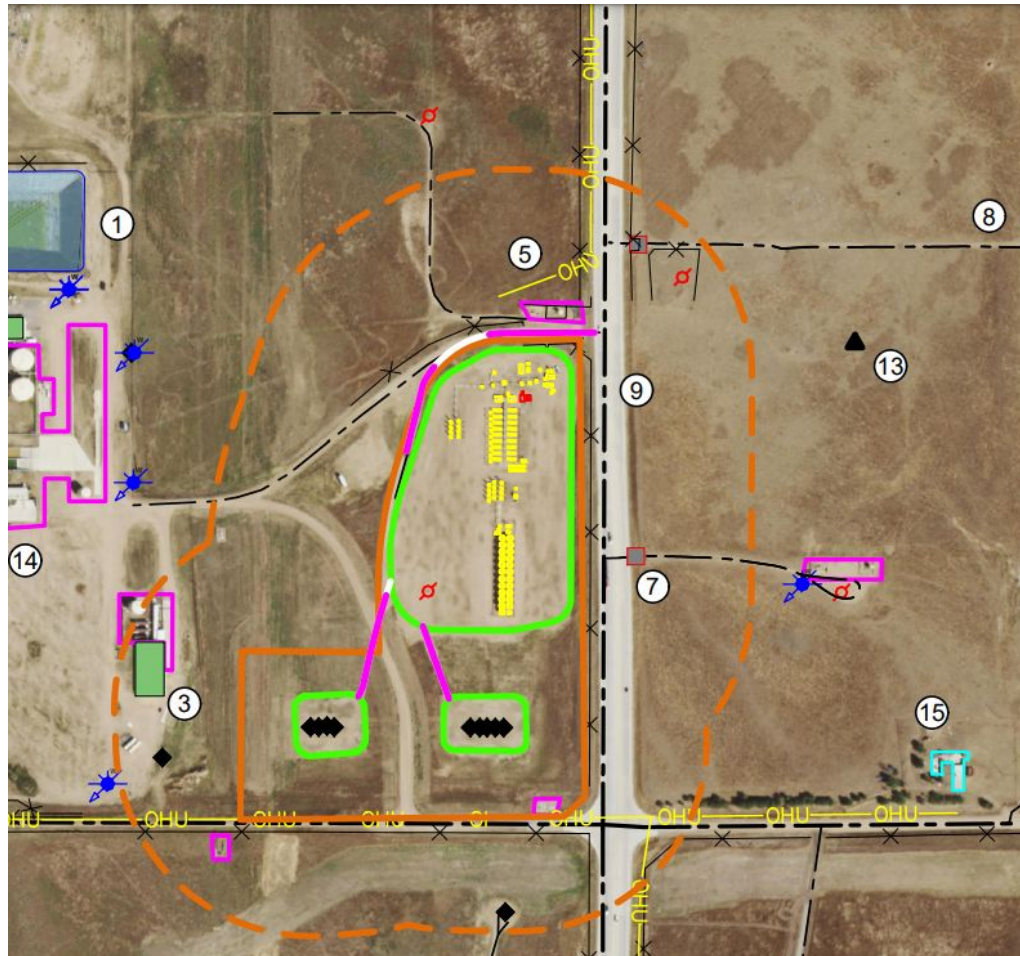


Photo 9. The photo was used from Doc. #402852422 to show the updated location layout drawing that has been approved.