



# **NueVida Resources, LLC**

## **INTERMEDIATE POST JOB REPORT**

**Ardourel 33081718 3HL 05-067-10037**  
**S:18 T:33N R:8W La Plata CO**

CallSheet #: 88030  
Proposal #: 70278



**INTERMEDIATE Post Job Report**

**Attention:** Mr. Pyeboone Arunakul | (720) 630-4157 | parunakul@seideltech.com  
NueVida Resources, LLC  
332 Co Road 3100 | Aztec, NM 87410

---

Dear Mr. Pyeboone Arunakul,

Thank you for the opportunity to provide cementing services on this well. American Cementing strives to achieve complete customer satisfaction. If you have any questions regarding the services or data provided, please contact American Cementing at any time.

Sincerely,

**Zen Keith**

SME North | (307) 757-7178 | zen.keith@americacementing.com

**Field Office**      28730 US-6, Rifle, CO 81650  
Phone: (970) 657-1187

## STAGE-1

### Job Details & Summary

#### Geometry

Type	Function	OD (in)	ID (in)	Weight (lb/ft)	Thread	Top (ft)	Bottom (ft)	Excess (%)
Casing	Outer	13.375	12.615	54.5	n/a	0	500	0
Open Hole	Outer	n/a	12.25	n/a	n/a	500	6292	80
Casing	Inner	9.625	8.835	40	Buttress	0	6274	0

#### Timing

Event	Date/Time
Call Out	8/23/2023 00:00
Depart Facility	8/23/2023 03:00
On Location	8/23/2023 13:30
Rig Up Iron	8/23/2023 15:30
Job Started	8/23/2023 17:58
Job Completed	8/23/2023 21:05
Rig Down Iron	8/23/2023 21:06
Depart Location	8/23/2023 21:07

#### Equipment / People

Unit Type	Unit	Power Unit	Employee #1
Cement Trailer Float	CTF-108	TRC-195	Lynn Wall
Cement Trailer Float	CTF-249	TRC-244	Jacob Kirchenwitz
Cement Pump Float	CPF-136	TRH-1137	Eric Brown
Light Duty Vehicles	LDV-022		Gerron McClure
Tractors	TRC-249		Steven Richey

#### General Job Information

Metrics	Value
Well Fluid Density	9.2 lb/gal
Well Fluid Type	WBM
Rig Circulation Vol	700 bbls
Rig Circulation Time	2 hours
Calculated Displacement	468.3 bbls
Actual Displacement	468 bbls
Total Spacer to Surface	40 bbls
Total CMT to Surface	71 bbls
Well Topped Out	N/A
Top Out Volume	NO bbls

#### Job Details

Metrics	Value
Flare Prior to Job	No
Flare Prior to Job	N/A units
Flare During Job	No
Flare During Job	N/A units
Flare at End of Job	No
Flare at End of Job	N/A units
Well Full Prior to Job	Yes
Well Fluid Density Into Well	9.6 lb/gal
Well Fluid Density Out of Well	9.6 lb/gal

#### Job Details (cont.)

Metrics	Value
BHCT	163 °F
BHST	225 °F

#### Water Analysis

Metrics	Value	Recommended
Water Source	None	
Temperature	68 °F	50-80 °F
pH Level	6	5.5-8.5
Chlorides	200 mg/L	0-3000 mg/L
Total Alkalinity	200	0-1000
Total Hardness	100 mg/L	0-500 mg/L
Carbonates	10 mg/L	0-100 mg/L
Sulfates	200 mg/L	0-1500 mg/L
Potassium	200 mg/L	0-3000 mg/L
Iron	10 mg/L	0-300 mg/L

#### Circulation

Lost Circulation Experienced
No

## Job Execution Information

Fluid	Product	Function	Density (lb/gal)	Yield (ft <sup>3</sup> /sk)	Water Rq. (gal/sk)	Water Rq. (gal/bbl)	Volume (sks)	Volume (bbl)	Designed Top (ft)
1	IntegraGuard EZ LCM	Spacer	9.50			36.63		40.00	4477
2	Stage-1 Lead	Lead	12.30	2.43	13.42		160.00	69.18	4875
3	Stage-1 Tail	Tail	15.80	1.16	4.83		359.00	74.27	5561
4	Displacement	DisplacementFinal	9.60			42.00		468.30	0

## Job Fluid Details

Fluid	Type	Fluid	Product	Function	Conc.	Uom
1	Spacer	IntegraGuard EZ LCM	S-8	Heavyweight	60.25	lb/bbl
1	Spacer	IntegraGuard EZ LCM	AVIS-616	Viscosifier	13.70	lb/bbl
1	Spacer	IntegraGuard EZ LCM	FP-24	Defoamer	0.50	lb/bbl
1	Spacer	IntegraGuard EZ LCM	IntegraGuard STAR PLUS 3K	LostCirculation	15.00	lb/bbl
1	Spacer	IntegraGuard EZ LCM	SS-201	Surfactant	0.50	gal/bbl
2	Lead	Stage-1 Lead	ASTM TYPE IL	Cement	100.00	%
2	Lead	Stage-1 Lead	A-5	Accelerator	3.00	%BWOW
2	Lead	Stage-1 Lead	BA-90	BondEnhancer	10.00	lb/sk
2	Lead	Stage-1 Lead	FL-66	FluidLoss	0.30	%BWOB
2	Lead	Stage-1 Lead	FP-24	Defoamer	0.30	%BWOB
2	Lead	Stage-1 Lead	GW-86	Viscosifier	0.10	%BWOB
2	Lead	Stage-1 Lead	IntegraSeal PHENO	LostCirculation	4.00	lb/sk
2	Lead	Stage-1 Lead	IntegraSeal POLI	LostCirculation	0.13	lb/sk
2	Lead	Stage-1 Lead	R-21L	Retarder	0.01	gal/sk
2	Lead	Stage-1 Lead	R-3	Retarder	0.70	%BWOB
2	Lead	Stage-1 Lead	STATIC FREE	Other	0.01	lb/sk
3	Tail	Stage-1 Tail	CLASS G	Cement	100.00	%
3	Tail	Stage-1 Tail	FL-66	FluidLoss	0.40	%BWOB
3	Tail	Stage-1 Tail	IntegraSeal PHENO	LostCirculation	2.00	lb/sk
3	Tail	Stage-1 Tail	IntegraSeal POLI	LostCirculation	0.25	lb/sk
3	Tail	Stage-1 Tail	R-3	Retarder	0.40	%BWOB

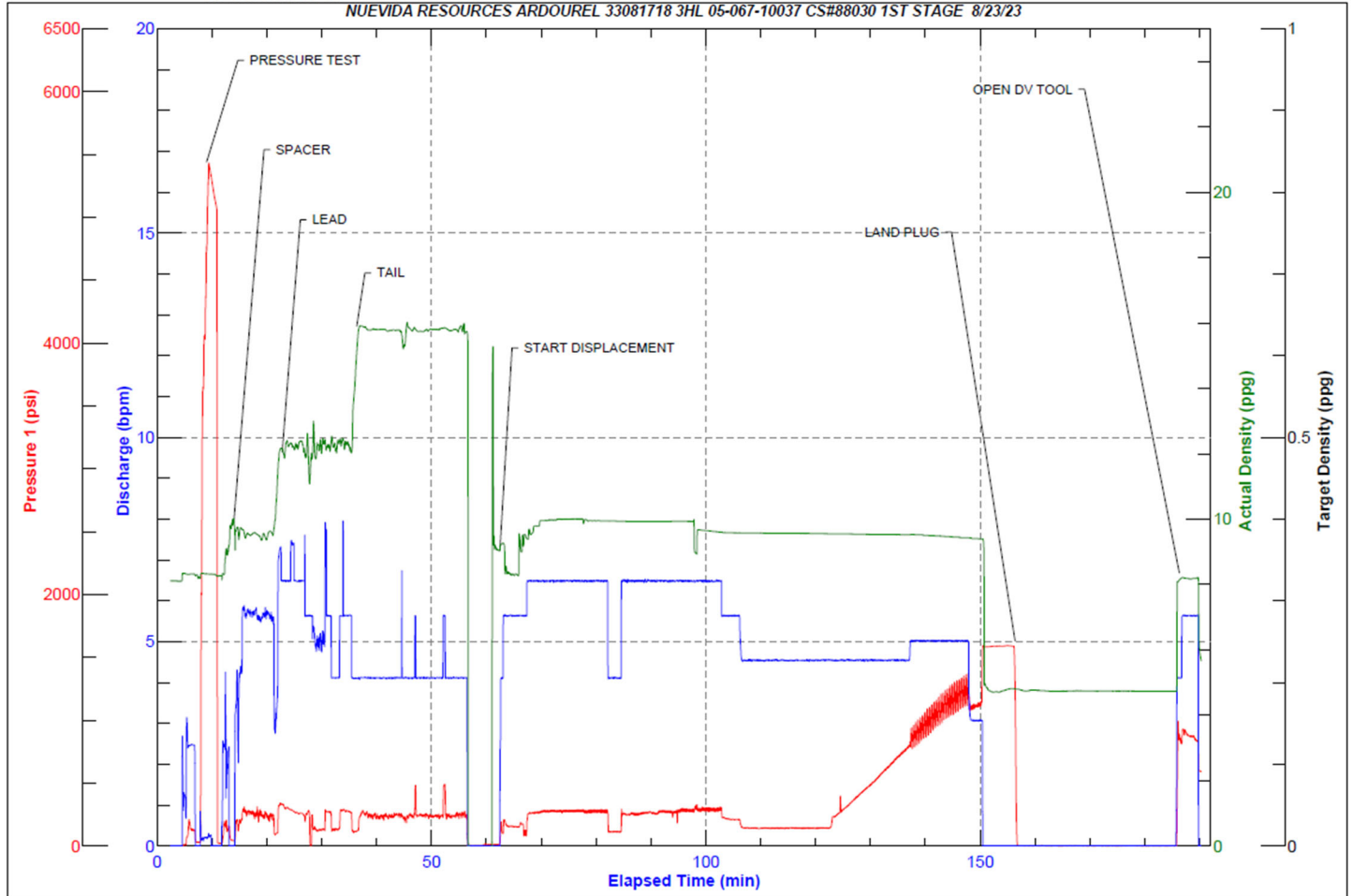
## Job Logs

Line	Event	Date (MM/DD/YY)	Time (HH:MM)	Density (lb/gal)	Pump Rate (bpm)	Pump Volume (bbls)	Pipe Pressure (psi)	Comment
1	ARRIVED ON LOCATION	8/23/2023	13:30					ARRIVED ON LOCATION
2	HAZARD ASSESMENT	8/23/2023	13:35					
3	SPOT EQUIPMENT	8/23/2023	13:45					
4	PRE RIG UP SAFETY MEETING	8/23/2023	14:00					
5	STAB HEAD	8/23/2023	17:30					
6	PRE JOB SAFETY MEETING	8/23/2023	17:45					
7	START JOB	8/23/2023	17:58					START JOB
8	PRESSURE TEST LINES 4000	8/23/2023	18:00	8.34	1	1	4000	PRESSURE TESTED LINES 4000 PSI
9	40 BBL INTRAGUARD SPACER	8/23/2023	18:05	9.5	5	40	250	40 BBL INTRAGUARD SPACER WITH SS201@ 9.5 PPG
10	START LEAD CEMENT @ 12.3	8/23/2023	18:13	12.3	5	1	259	LEAD CEMENT @ 12.3 (2.43,13.42) 69.2 BBLs OR 160 SACKS
11	50 GONE ON LEAD	8/23/2023	18:22	12.3	5	50	202	
12	END OF LEAD CEMENT	8/23/2023	18:29	12.3	4	69	138	
13	START TAIL CEMENT @ 15.8	8/23/2023	18:29	15.8	4	1	115	STARTED TAIL CEMENT @ 15.8 (1.16,4.83) 359 SACKS OR 74.1 BBLs
14	50 GONE ON TAIL	8/23/2023	18:41	15.8	4	50	202	
15	END OF TAIL CEMENT	8/23/2023	18:50	15.8	3	74	90	END OF TAIL CEMENT
16	SHUTDOWN/ DROP PLUG	8/23/2023	18:51					SHUTDOWN/ DROP PLUG
17	START 468.3 BBL DISPLACEMENT	8/23/2023	18:56	8.34	5	1	159	20 BBL FW/ 110 BBL BRINE WATER/ 338 BBL MUD
18	50 GONE ON DISPLACEMENT	8/23/2023	19:04	10	6.5	50	260	
19	100 GONE ON DISPLACEMENT	8/23/2023	19:12	10	6.5	100	268	
20	150 GONE ON DISPLACEMENT	8/23/2023	19:21	9.6	6.5	150	252	
21	200 GONE ON DISPLACEMENT	8/23/2023	19:28	9.6	6.5	200	275	
22	250 GONE ON DISPLACEMENT	8/23/2023	19:36	9.6	6.5	250	215	SLOWED RATE FROM 6.5 BPM TO 4.5 BPM PER CUSTOMER REQUEST
23	300 GONE ON DISPLACEMENT	8/23/2023	19:49	9.6	4.5	300	140	
24	CAUGHT CEMENT	8/23/2023	19:53	9.6	4.5	338	263	CAUGHT CEMENT @ 338 BBLs GONE (4.5/263)
25	350 GONE ON DISPLACEMENT	8/23/2023	20:01	9.6	4.5	350	398	
26	400 GONE ON DISPLACEMENT	8/23/2023	20:14	9.6	4.5	400	855	
27	PRESSURE BEFORE SLOW RATE	8/23/2023	20:22	9.6	4.5	440	1220	PRESSURE BEFORE SLOW RATE
28	SLOW RATE PRESSURE	8/23/2023	20:22	9.6	3	440	1109	SLOW RATE PRESSURE
29	PRESSURE BEFORE LANDING PLUG	8/23/2023	20:26	9.6	3	468	1120	FINAL LIFT PRESSURE BEFORE LANDING PLUG
30	LAND PLUG	8/23/2023	20:26	9.6	3	468	1527	BUMPED PLUG TO 1527 PSI
31	CHECK FLOAT	8/23/2023	20:31	9.6				
32	DROP OPENING PLUG	8/23/2023	20:35					DROPPED OPENING PLUG/ WAITED 25 MINUTE FREE FALL
33	OPEN DV TOOL	8/23/2023	21:00	9.6			725	OPENED DV TOOL (4BPM/725 PSI)
34	CIRCULATE 20 BBLs/ SWAP OVER	8/23/2023	21:01	9.6				
35	END OF 1ST STAGE	8/23/2023	21:05					END OF FIRST STAGE

## Pump Diagrams



JobMaster Program Version 5.01C1  
Job Number: 88030  
Customer: NUEVIDA  
Well Name: ARDOUREL 3HL



Job Start: Wednesday, August 23, 2023

Stage-1

## STAGE-2

### Job Details & Summary

#### Geometry

Type	Function	OD (in)	ID (in)	Weight (lb/ft)	Thread	Top (ft)	Bottom (ft)	Excess (%)
Casing	Outer	13.375	12.615	54.5	n/a	0	500	0
Open Hole	Outer	n/a	12.25	n/a	n/a	500	4875	80
Casing	Inner	9.625	8.835	40	Buttress	0	4639	0

#### Equipment / People

Unit Type	Unit	Power Unit	Employee #1
Cement Trailer Float	CTF-108	TRC-195	Lynn Wall
Field Storage Float	FSF-013		
Light Duty Vehicles	LDV-022		Gerron McClure
Cement Pump Float	CPF-136	TRH-1137	Eric Brown
Tractors	TRC-244		Jacob Kirchenwitz
Tractors	TRC-249		Steven Richey

#### Timing

Event	Date/Time
Call Out	8/23/2023 21:11
Depart Facility	8/23/2023 21:12
On Location	8/23/2023 21:13
Rig Up Iron	8/23/2023 21:14
Job Started	8/23/2023 21:15
Job Completed	8/24/2023 05:15
Rig Down Iron	8/24/2023 05:16
Depart Location	8/24/2023 05:17

#### General Job Information

Metrics	Value
Well Fluid Density	9.2 lb/gal
Well Fluid Type	WBM
Rig Circulation Vol	700 bbls
Rig Circulation Time	6 hours
Calculated Displacement	350.1 bbls
Actual Displacement	350 bbls
Total Spacer to Surface	20 bbls
Total CMT to Surface	50 bbls
Well Topped Out	No
Top Out Volume	N/A bbls

#### Job Details

Metrics	Value
Flare Prior to Job	No
Flare During Job	No
Flare at End of Job	No
Well Full Prior to Job	Yes
Well Fluid Density Into Well	9.55 lb/gal
Well Fluid Density Out of Well	9.2 lb/gal

#### Job Details (cont.)

Metrics	Value
BHCT	135 °F
BHST	186 °F

#### Water Analysis

Metrics	Value	Recommended
Water Source	None	
Temperature	68 °F	50-80 °F
pH Level	6	5.5-8.5
Chlorides	200 mg/L	0-3000 mg/L
Total Alkalinity	200	0-1000
Total Hardness	100 mg/L	0-500 mg/L
Carbonates	10 mg/L	0-100 mg/L
Sulfates	200 mg/L	0-1500 mg/L
Potassium	200 mg/L	0-3000 mg/L
Iron	10 mg/L	0-300 mg/L

#### Circulation

Lost Circulation Experienced
No

## Job Execution Information

Fluid	Product	Function	Density (lb/gal)	Yield (ft <sup>3</sup> /sk)	Water Rq. (gal/sk)	Water Rq. (gal/bbl)	Volume (sks)	Volume (bbl)	Designed Top (ft)
1	IntegraGuard EZ LCM	Spacer	9.50			36.63		40.00	2276
2	Stage-2 Lead	Lead	12.30	2.43	13.42		326.00	140.95	2674
3	Stage-2 Tail	Tail	13.50	1.49	7.22		302.00	80.35	4075
4	Displacement	DisplacementFinal	8.34			42.00		351.30	0

## Job Fluid Details

Fluid	Type	Fluid	Product	Function	Conc.	Uom
1	Spacer	IntegraGuard EZ LCM	S-8	Heavyweight	60.25	lb/bbl
1	Spacer	IntegraGuard EZ LCM	AVIS-616	Viscosifier	13.70	lb/bbl
1	Spacer	IntegraGuard EZ LCM	FP-24	Defoamer	0.50	lb/bbl
1	Spacer	IntegraGuard EZ LCM	IntegraGuard STAR PLUS 3K	LostCirculation	15.00	lb/bbl
1	Spacer	IntegraGuard EZ LCM	SS-201	Surfactant	0.50	gal/bbl
2	Lead	Stage-2 Lead	ASTM TYPE IL	Cement	100.00	%
2	Lead	Stage-2 Lead	A-5	Accelerator	3.00	%BWOW
2	Lead	Stage-2 Lead	BA-90	BondEnhancer	10.00	lb/sk
2	Lead	Stage-2 Lead	FL-66	FluidLoss	0.30	%BWOB
2	Lead	Stage-2 Lead	FP-24	Defoamer	0.30	%BWOB
2	Lead	Stage-2 Lead	GW-86	Viscosifier	0.10	%BWOB
2	Lead	Stage-2 Lead	IntegraSeal PHENO	LostCirculation	4.00	lb/sk
2	Lead	Stage-2 Lead	IntegraSeal POLI	LostCirculation	0.13	lb/sk
2	Lead	Stage-2 Lead	R-21L	Retarder	0.01	gal/sk
2	Lead	Stage-2 Lead	R-3	Retarder	0.70	%BWOB
2	Lead	Stage-2 Lead	STATIC FREE	Other	0.01	lb/sk
3	Tail	Stage-2 Tail	CLASS G	Cement	50.00	%
3	Tail	Stage-2 Tail	FLY ASH (POZZOLAN)	Extender	50.00	%
3	Tail	Stage-2 Tail	A-10	Accelerator	3.00	%BWOB
3	Tail	Stage-2 Tail	A-2	Accelerator	0.30	lb/sk
3	Tail	Stage-2 Tail	BA-90	BondEnhancer	3.00	lb/sk
3	Tail	Stage-2 Tail	FL-66	FluidLoss	0.40	%BWOB
3	Tail	Stage-2 Tail	FP-24	Defoamer	0.30	%BWOB
3	Tail	Stage-2 Tail	IntegraSeal POLI	LostCirculation	0.25	lb/sk



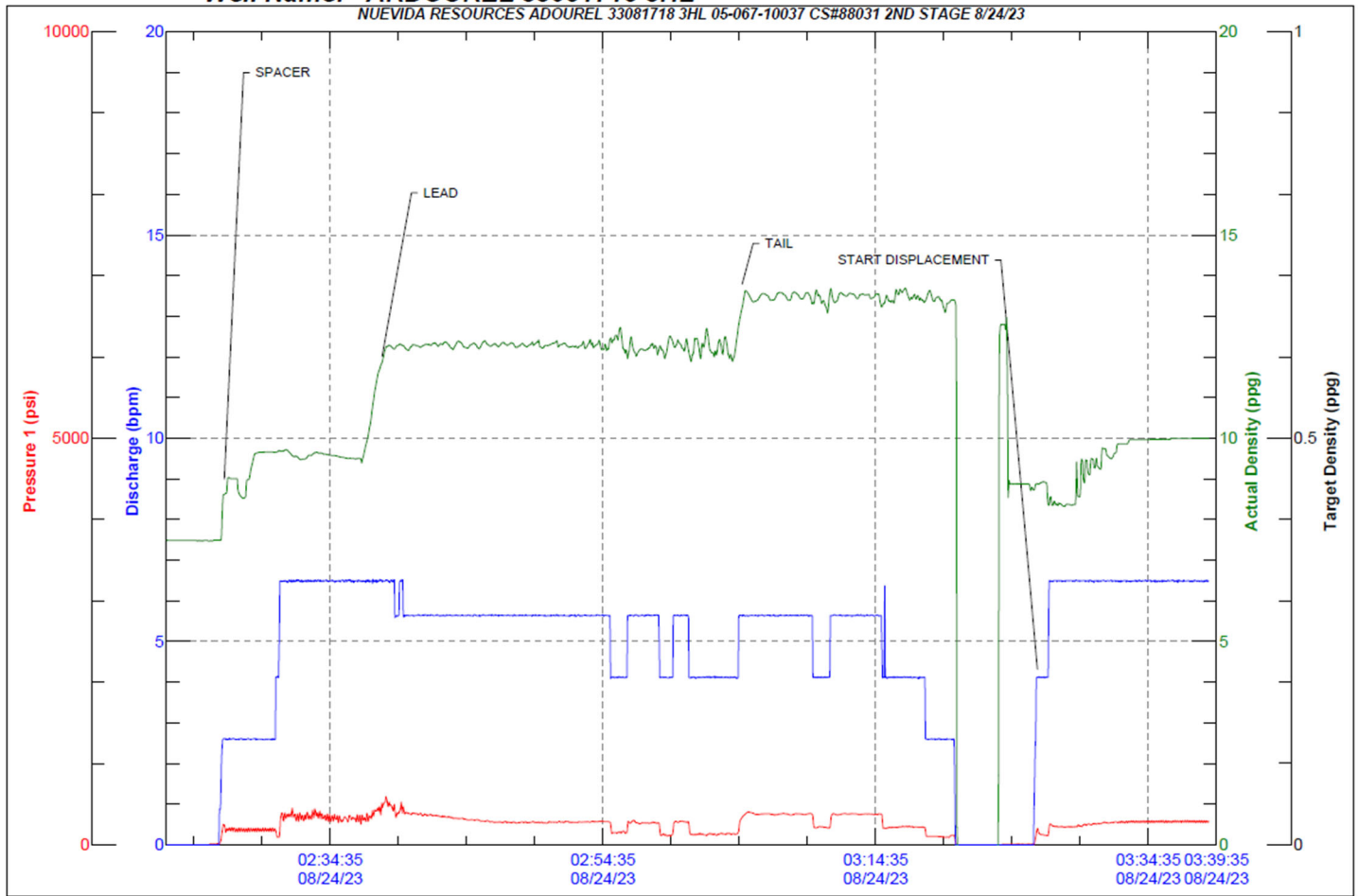
## Job Logs

Line	Event	Date (MM/DD/YY)	Time (HH:MM)	Density (lb/gal)	Pump Rate (bpm)	Pump Volume (bbls)	Pipe Pressure (psi)	Comment
1	START SECOND STAGE	8/23/2023	21:15					START SECOND STAGE
2	PRE JOB SAFETY MEETING	8/24/2023	02:00					
3	SWAP OVER LINES	8/24/2023	02:25					SWAP OVER FROM RIG CIRCULATION
4	BREAK CIRCULATION	8/24/2023	02:30	8.34	5	10	211	BREAK CIRCULATION
5	40 BBL INTRAGUARD SPACER	8/24/2023	02:35	9.5	5	40	342	40 BBL INTRAGUARD SPACER @ 9.5 W SS201
6	START 141 BBL LEAD @ 12.3	8/24/2023	02:36	12.3	6	1	292	START 141 BBL LEAD SLURRY @ 12.3 (2.43,13.42) 326 SACKS
7	50 BBL LEAD GONE	8/24/2023	02:46	12.3	6	50	300	
8	100 BBL LEAD GONE	8/24/2023	02:56	12.3	6	100	265	
9	END OF LEAD SLURRY	8/24/2023	03:03	12.3	6	141	300	END OF LEAD SLURRY
10	START 80 BBL TAIL SLURRY @ 13.5	8/24/2023	03:03	13.5	5	1	336	START 81 BBL TAIL SLURRY @13.5 (1.49,7.22) 302 SACKS
11	50 BBL TAIL SLURRY GONE	8/24/2023	03:10	13.5	5	50	380	
12	END OF TAIL SLURRY	8/24/2023	03:20	13.5	3	81	117	END OF TAIL SLURRY
13	SHUTDOWN/ DROP CLOSING PLUG	8/24/2023	03:21					
14	START 351.6 BBL DISPLACEMENT	8/24/2023	03:27	8.34	3	1	97	START 351.3 BBL DISPLACEMENT (20 BBL FW/190 BRINE/141 MUD)
15	50 BBL GONE ON DISPLACEMENT	8/24/2023	03:33	10	6.5	50	274	
16	100 BBL GONE ON DISPLACEMENT	8/24/2023	03:41	10	6.5	100	266	
17	SLOWED RATE THRU TOOL @	8/24/2023	03:46	10	3	140	81	SLOWED RATE THRU TOOL
18	150 BBL GONE ON DISPLACEMENT	8/24/2023	03:50	10	3	150	80	
19	CAUGHT CEMENT @ 178 GONE	8/24/2023	03:54	10	6.5	178	346	CAUGHT CEMENT @ 178 BBLS GONE
20	200 BBL GONE ON DISPLACEMENT	8/24/2023	04:00	10	5	200	493	
21	250 BBL GONE OPN DISPLACEMENT	8/24/2023	04:11	9.55	5	250	813	
22	300 BBL GONE O N DISPLACEMENT	8/24/2023	04:23	9.55	5	300	855	
23	PRESSURE BEFORE SLOW RATE	8/24/2023	04:31	9.55	5	330	1120	PRESSURE BEFORE SLOWING RATE
24	SLOW RATE PRESSURE	8/24/2023	04:32	9.55	4.5	330	988	SLOW RATE PRESSURE
25	PRESSURE BEFORE LANDING PLUG	8/24/2023	04:34	9.55	4.5	351	1034	FINAL LIFT PRESSURE 1034
26	LAND PLUG	8/24/2023	04:34	9.55	4.5	351	2661	LANDED PLUG @ 2661
27	CHECK FLOAT	8/24/2023	04:39	9.55				RETURNED 2 BBLS UPON TOOL CLOSURE
28	DROP OPENING PLUG	8/24/2023	04:42	9.55				DROP OPENING PLUG WAIT 15 MINUTE FREE FALL
29	OPEN DV TOOL	8/24/2023	04:58	9.55	4	1	700	OPEN DV TOOL @ 700
30	CIRCULATE 20 BBLS SWAP OVER	8/24/2023	05:00	9.55	5	20	420	BREAK CIRCULATION AND CIRCULATE 20 BBLS BEFORE SWAP OVER TO RIG
31	END OF SECOND STAGE	8/24/2023	05:05					END OF SECOND STAGE

## Pump Diagrams



JobMaster Program Version 5.01C1  
Job Number: 88031  
Customer: NUEVIDA  
Well Name: ARDOUREL 33081718 3HL



Job Start: Thursday, August 24, 2023

Stage-2

## STAGE-3

### Job Details & Summary

#### Geometry

Type	Function	OD (in)	ID (in)	Weight (lb/ft)	Thread	Top (ft)	Bottom (ft)	Excess (%)
Casing	Outer	13.375	12.615	54.5	n/a	0	500	0
Open Hole	Outer	n/a	12.25	n/a	n/a	500	2674	107
Casing	Inner	9.625	8.835	40	Buttress	0	2021	0

#### Equipment / People

Unit Type	Unit	Employee #1
Cement Trailer Float	CTF-108	Lynn Wall
Field Storage Float	FSF-014	
Cement Trailer Float	CTF-576	Steven Richey
Light Duty Vehicles	LDV-022	Gerron McClure
Cement Pump Float	CPF-136	Eric Brown
Tractors	TRC-244	Jacob Kirchenwitz

#### Timing

Event	Date/Time
Call Out	8/24/2023 05:01
Depart Facility	8/24/2023 05:02
On Location	8/24/2023 05:03
Rig Up Iron	8/24/2023 05:04
Job Started	8/24/2023 05:05
Job Completed	8/24/2023 12:30
Rig Down Iron	8/24/2023 13:30
Depart Location	8/24/2023 14:00

#### General Job Information

Metrics	Value
Well Fluid Density	9.55 lb/gal
Well Fluid Type	OBM
Rig Circulation Vol	700 bbls
Rig Circulation Time	6 hours
Calculated Displacement	153.1 bbls
Actual Displacement	153.1 bbls
Total Spacer to Surface	20 bbls
Total CMT to Surface	73 bbls
Well Topped Out	No
Top Out Volume	N/A bbls

#### Job Details

Metrics	Value
Flare Prior to Job	No
Flare Prior to Job	N/A units
Flare During Job	No
Flare During Job	N/A units
Flare at End of Job	No
Flare at End of Job	N/A units
Well Full Prior to Job	Yes
Well Fluid Density Into Well	9.55 lb/gal
Well Fluid Density Out of Well	9.55 lb/gal

#### Job Details (cont.)

Metrics	Value
BHCT	100 °F
BHST	135 °F

#### Water Analysis

Metrics	Value	Recommended
Water Source	None	
Temperature	68 °F	50-80 °F
pH Level	6	5.5-8.5
Chlorides	200 mg/L	0-3000 mg/L
Total Alkalinity	200	0-1000
Total Hardness	10 mg/L	0-500 mg/L
Carbonates	10 mg/L	0-100 mg/L
Sulfates	200 mg/L	0-1500 mg/L
Potassium	500 mg/L	0-3000 mg/L
Iron	10 mg/L	0-300 mg/L

#### Circulation

Lost Circulation Experienced
No

### Job Execution Information

Fluid	Product	Function	Density (lb/gal)	Yield (ft <sup>3</sup> /sk)	Water Rq. (gal/sk)	Water Rq. (gal/bbl)	Volume (sks)	Volume (bbl)	Designed Top (ft)
1	IntegraGuard EZ LCM	Spacer	9.50			36.63		40.00	0
2	Stage-3 Lead	Lead	12.00	2.49	14.30		384.00	170.55	0
3	Stage-3 Lead Additional	Lead	12.00	2.46	14.42		74.00	32.42	1697
4	Stage-3 Tail	Tail	13.00	1.95	10.50		232.00	80.39	1978
5	Displacement	DisplacementFinal	8.34			42.00		153.10	0
6	Top Out	Topout	15.80	1.15	5.00		200.00	40.89	0

### Job Fluid Details

Fluid	Type	Fluid	Product	Function	Conc.	Uom
1	Spacer	IntegraGuard EZ LCM	S-8	Heavyweight	60.25	lb/bbl
1	Spacer	IntegraGuard EZ LCM	AVIS-616	Viscosifier	13.70	lb/bbl
1	Spacer	IntegraGuard EZ LCM	FP-24	Defoamer	0.50	lb/bbl
1	Spacer	IntegraGuard EZ LCM	IntegraGuard STAR PLUS 3K	LostCirculation	15.00	lb/bbl
1	Spacer	IntegraGuard EZ LCM	SS-201	Surfactant	0.50	gal/bbl
2	Lead	Stage-3 Lead	ASTM TYPE IL	Cement	100.00	%
2	Lead	Stage-3 Lead	A-10	Accelerator	5.00	%BWOB
2	Lead	Stage-3 Lead	A-2	Accelerator	3.00	lb/sk
2	Lead	Stage-3 Lead	FP-24	Defoamer	0.30	%BWOB
2	Lead	Stage-3 Lead	IntegraSeal PHENO	LostCirculation	4.00	lb/sk
2	Lead	Stage-3 Lead	IntegraSeal POLI	LostCirculation	0.13	lb/sk
2	Lead	Stage-3 Lead	STATIC FREE	Other	0.01	lb/sk
3	Lead	Stage-3 Lead Additional	ASTM TYPE IL	Cement	100.00	%
3	Lead	Stage-3 Lead Additional	A-10	Accelerator	5.00	%BWOB
3	Lead	Stage-3 Lead Additional	A-2	Accelerator	3.00	lb/sk
3	Lead	Stage-3 Lead Additional	FP-24	Defoamer	0.30	%BWOB
3	Lead	Stage-3 Lead Additional	IntegraSeal POLI	LostCirculation	0.13	lb/sk
3	Lead	Stage-3 Lead Additional	STATIC FREE	Other	0.01	lb/sk
4	Tail	Stage-3 Tail	ASTM TYPE IL	Cement	100.00	%
4	Tail	Stage-3 Tail	A-10	Accelerator	5.00	%BWOB
4	Tail	Stage-3 Tail	A-2	Accelerator	2.00	lb/sk
4	Tail	Stage-3 Tail	A-7P	Accelerator	2.00	lb/sk
4	Tail	Stage-3 Tail	FP-24	Defoamer	0.30	%BWOB
4	Tail	Stage-3 Tail	IntegraSeal POLI	LostCirculation	0.25	lb/sk
6	Topout	Top Out	CLASS G	Cement	100.00	%

## Job Logs

Line	Event	Date (MM/DD/YY)	Time (HH:MM)	Density (lb/gal)	Pump Rate (bpm)	Pump Volume (bbls)	Pipe Pressure (psi)	Comment
1	START THIRD STAGE	8/24/2023	05:05					START 3RD STAGE CEMENTING APPLICATION
2	PRE JOB SAFETY MEETING	8/24/2023	10:00					
3	SWAP OVER FROM RIG	8/24/2023	10:45					SWAP OVER FROM RIG CIRCULATION
4	BREAK CIRCULATION	8/24/2023	10:49	8.34	5	10	102	BREAK CIRCULATION
5	40 BBL INTRAGUARD SPACER	8/24/2023	10:53	9.5	5	40	300	40 BBL INTAGUARD SPACER @ 9.5 W SS201
6	START 203 BBL LEAD CEMENT @ 12.00	8/24/2023	11:01	12	5	1	212	START 203.1 BBL LEAD CEMENT @ 12.0 (2.49,14.30) 384 SACKS, AND ADDITIONAL 74 SACKS @ 12.0 (2.46,14.42)
7	50 GONE ON LEAD	8/24/2023	11:09	12	6	50	320	
8	100 GONE ON LEAD	8/24/2023	11:19	12	6	100	314	
9	150 GONE ON LEAD	8/24/2023	11:27	12	6	150	325	
10	END OF LEAD CEMENT	8/24/2023	11:36	12	6	203	341	END OF LEAD CEMENT
11	START 80.5 BBL TAIL CEMENT @ 13.0	8/24/2023	11:36	13	5	1	341	START 80.5 BBL TAIL SLURRY @ 13.0 (1.95,10.50) 232 SACKS
12	50 BBL GONE ON TAIL	8/24/2023	11:44	13	5	50	323	
13	END OF TAIL CEMENT	8/24/2023	11:52	13	3	81	114	END OF TAIL CEMENT
14	SHUTDOWN/ DROP CLOSING PLUG	8/24/2023	11:52					
15	START 153.1 BBL DISPLACEMENT	8/24/2023	11:57	10	5	1	359	START 153.1 BRINE WATER DISPLACEMENT
16	50 BBL GONE ON DISPLACEMENT	8/24/2023	12:05	10	6.5	50	412	
17	100 BBL GONE ON DISPLACEMENT	8/24/2023	12:13	10	6.5	100	742	
18	PRESSURE BEFORE SLOW RATE	8/24/2023	12:16	10	6.5	120	765	PRESSURE BEFORE SLOWING RATE
19	SLOW RATE PRESSURE	8/24/2023	12:16	10	4.5	120	656	SLOW RATE PRESSURE
20	PRESSURE BEFORE LAND PLUG	8/24/2023	12:25	10	4.5	153	756	FINAL LIFT PRESSURE TO LAND PLUG
21	LAND PLUG	8/24/2023	12:25	10	4.5	153	3205	LANDED CLOSING PLUG @ 3205
22	CHECK TOOL CLOSED	8/24/2023	12:30					RETURNED 2 BBLs BACK UPON CHECK OT TOOL CLOSURE
23	END OF SERVICES	8/24/2023	12:30					END OF CEMENTING SERVICES
24	POST JOB SAFETY MEETING	8/24/2023	12:45					
25	RIGGED DOWN	8/24/2023	13:30					
26	PRE CONVOY SAFETY MEETING	8/24/2023	14:00					
27	DEPART LOCATION	8/24/2023	14:00					
28	END OF JOB	8/24/2023	14:00					END OF JOB

## Pump Diagrams

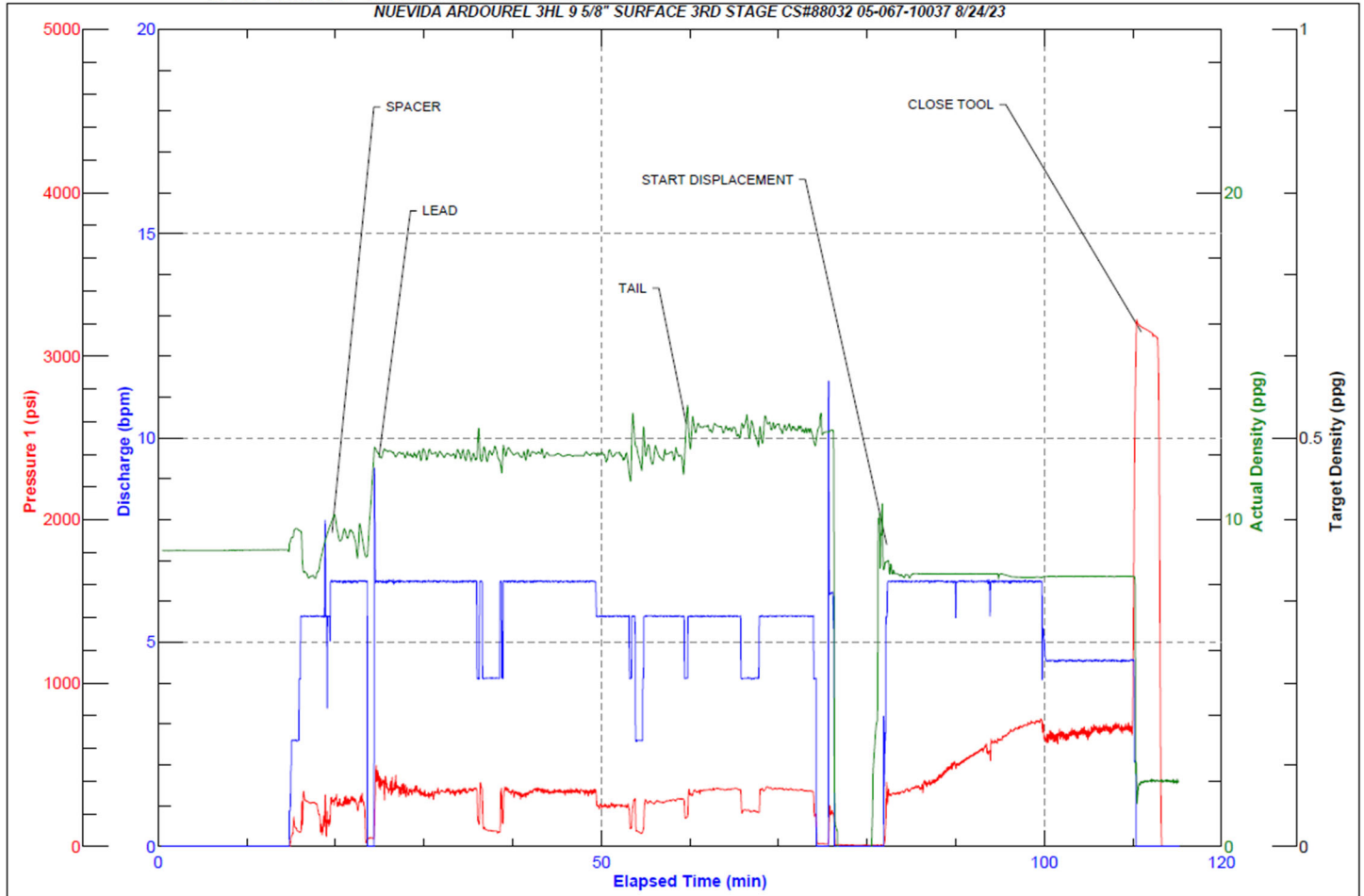


JobMaster Program Version 5.01C1

Job Number: 88032

Customer: NUEVIDA

Well Name: ARDOUREL 3HL



Job Start: Thursday, August 24, 2023

Stage-3