



FORM F-106

RECEIVED

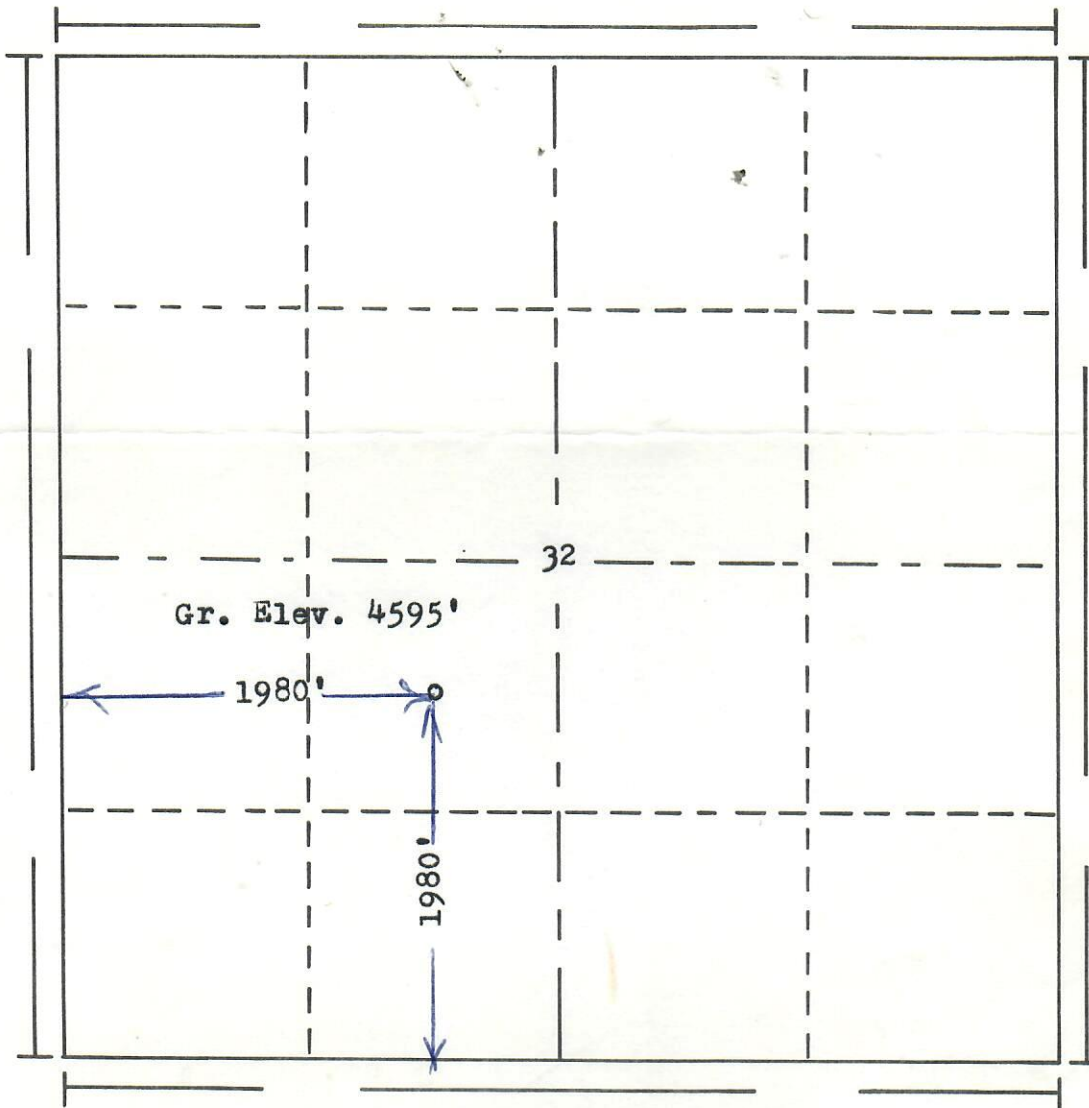
JAN 8 - 1979

78-1288
COLO. OIL & GAS CONS. COMM.

R. 54W



00054666

T.
2
N

Scale... 1" = 1000'

Powers Elevation Company, Inc. of Denver, Colorado
has in accordance with a request from Brenda
for Robert E. Landreth
determined the location of No.1 Irene Jantzen
to be CNE SW Section 32 Township 2N
Range 54W of the 6th Principal Meridian
Washington County, Colorado

I hereby certify that this plat is an
accurate representation of a correct
survey showing the location of

Date: 12-29-78

Boyd T. Hall
Licensed Land Surveyor No. 2853
State of Colorado