










Flowline Abandonment Type:

Partial Abandon in Place to area of conflict due to tank battery

Flowlines

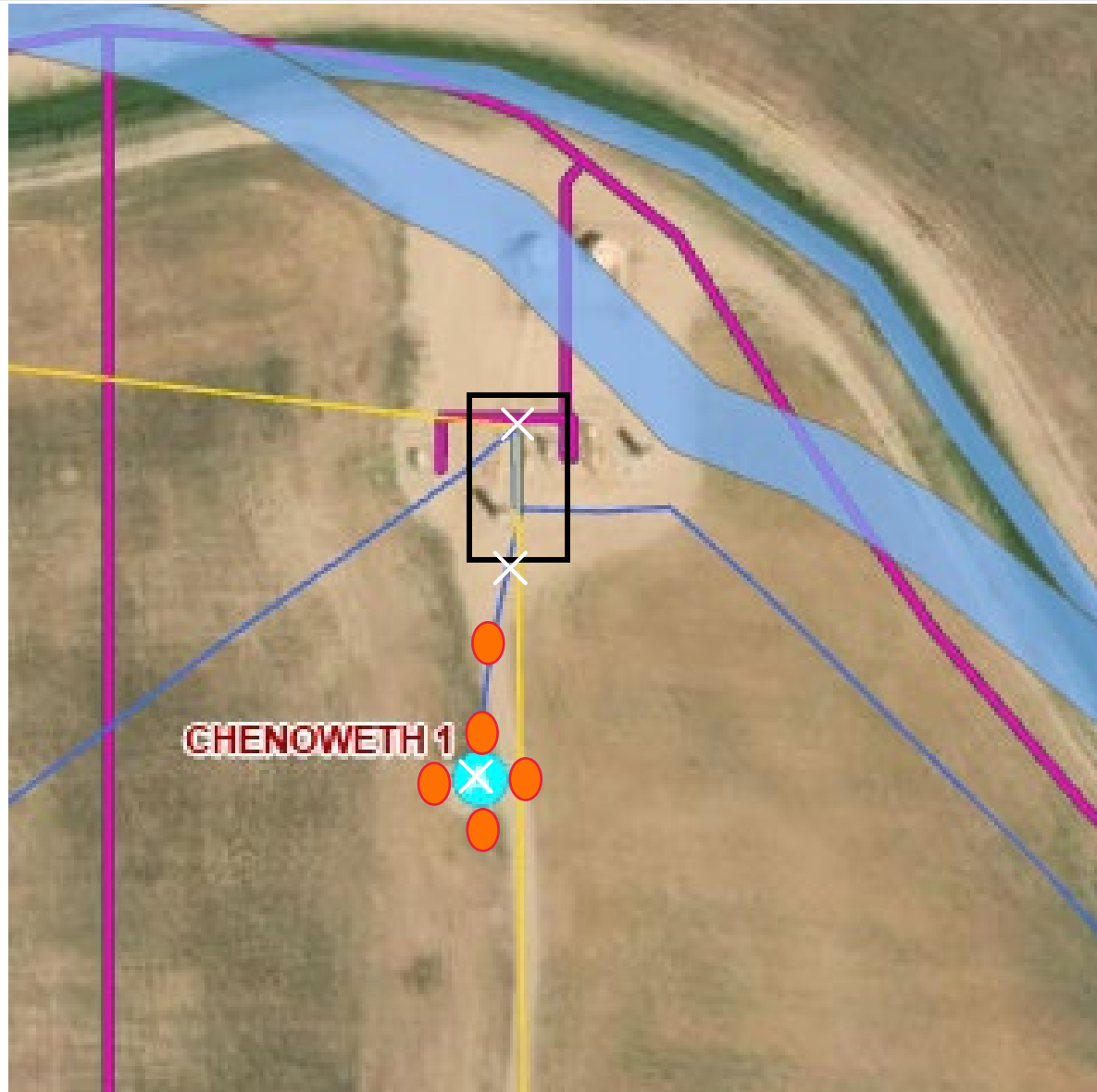
-  Abandoned
 Active
 Out of Service
 Pre-commissioned
 Removed
 Turned into Air Line
 Area of Conflict
 (Proposed Abandon-in-Place Area)
 Proposed Soil Sample Location
 Field Screening Location

Wells

-  Active
-  Abandoned Location
-  Dry & Abandoned
-  Plugged & Abandoned
-  Producing
-  Shut-In
-  Temporarily Abandoned

Third-Party Pipelines

-
- NWI Wetlands



Well Latitude/Longitude: 40.302500/-104.558180

Flowline Length (ft): 150

Flowline Point A Latitude/Longitude: 40.30288964/-104.5581118

Flowline Point B Latitude/Longitude: 40.30248167/-104.5581844

Created By: Clara Jenck
Date: 01/12/2024

