

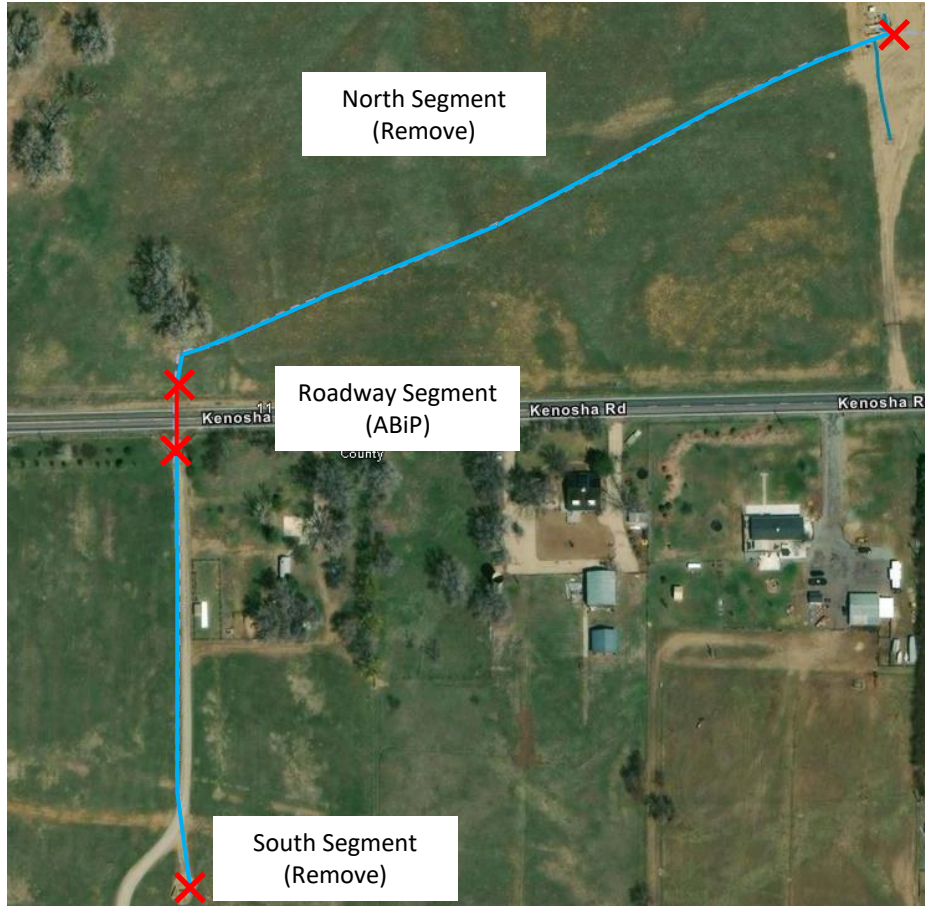
DONIPHAN SHIELDS 32-11 (01306557_FL): Abandon in Place Layout

40.067860, -105.081106

SWNE Sec. 11 T1N, R69W, 6th PM

Boulder County, Colorado

Crestone Peak Resources (10633)



Flowline Unique OperFeatID	Line Type	Start Location Latitude	Start Location Longitude	End Location Latitude (Cut Point)	End Location Longitude (Cut Point)	Segment Length (ft)	Segment	Abandonment Type
01306557_FL	Multiphase	40.067860	-105.081106	40.069311	-105.081158	530	Blue	Remove
01306557_FL	Multiphase	40.069311	-105.081158	40.069648	-105.081123	85	Red	Abandon in Place
01306557_FL	Multiphase	40.069648	-105.081123	40.070708	-105.078106	950	Blue	Remove

Segment End Points

✗ Indicates where flowline abandonment type changes